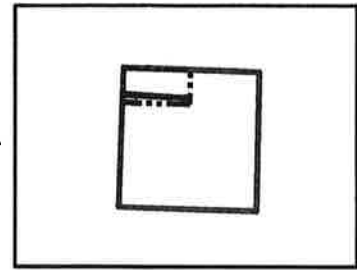
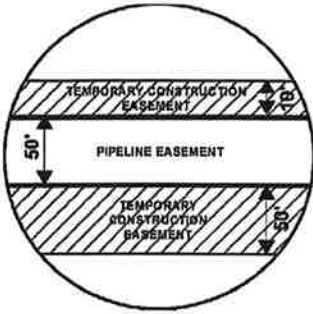


EXHIBIT "B"

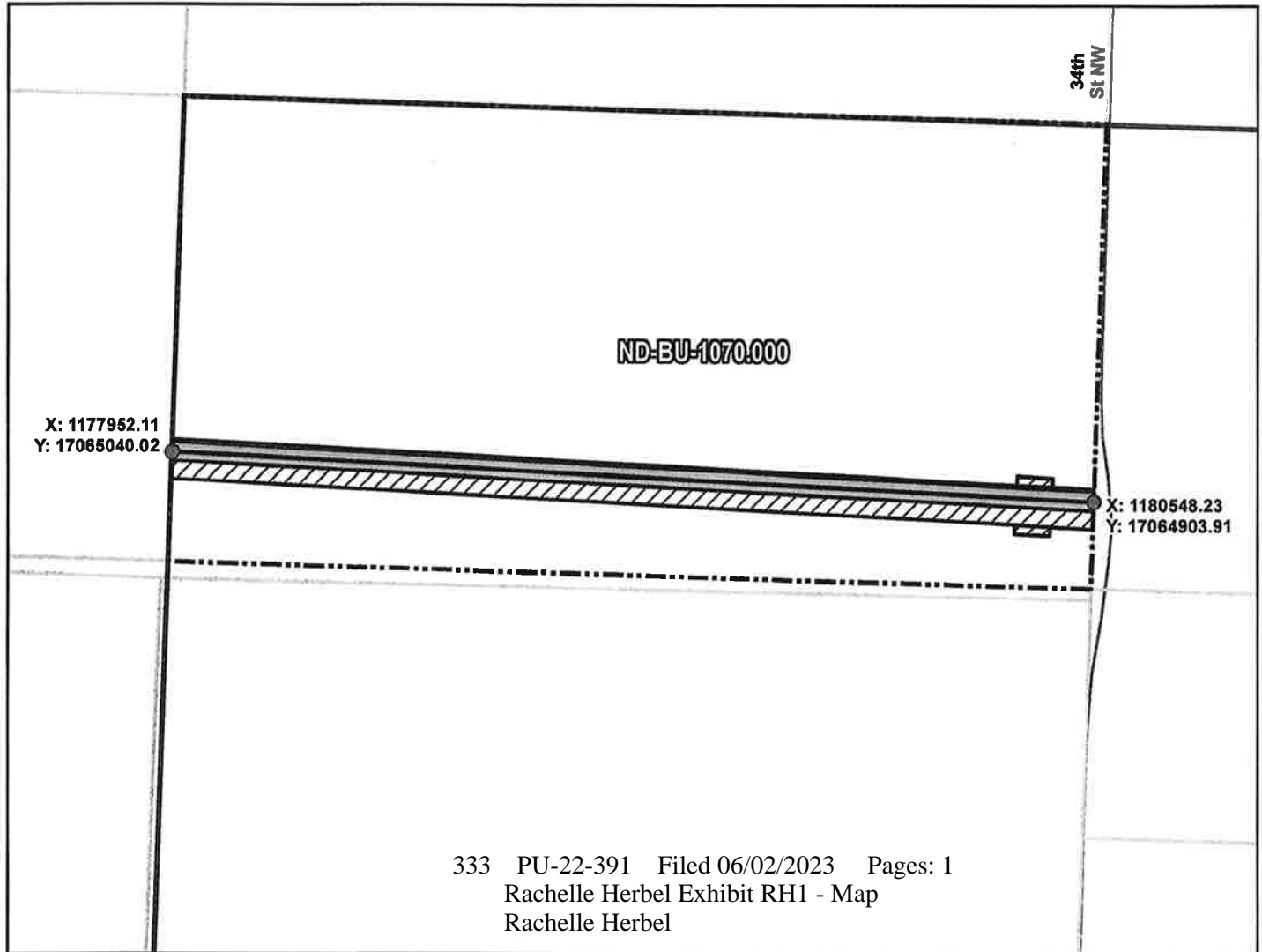
PRELIMINARY ROUTE

BURLEIGH COUNTY, NORTH DAKOTA



VICINITY MAP
N.T.S.

SEC. 13 T140N R81W



333 PU-22-391 Filed 06/02/2023 Pages: 1
 Rachele Herbel Exhibit RH1 - Map
 Rachele Herbel

ROUTING LENGTH = 2599.692 FT +/-
IMPACTS: PIPELINE EASEMENT = 2.984 AC. +/- / TEMPORARY CONSTRUCTION EASEMENT = 3.696 AC. +/-

Legend

- PROPOSED ROUTE
- ROADS
- PARCEL BOUNDARY
- ADJACENT PROPERTIES
- PIPELINE EASEMENT
- TEMPORARY CONSTRUCTION EASEMENT
- SECTION BOUNDARY
- COUNTY BOUNDARY

NOTES:

1. THIS IS A PRELIMINARY DOCUMENT AND IS INTENDED TO DEPICT THE APPROXIMATE LOCATION OF A PROPOSED PIPELINE EASEMENT.
2. THIS DOCUMENT DOES NOT REPRESENT A LAND SURVEY AND IS NOT INTENDED TO DEPICT THE FINAL ALIGNMENT
3. COORDINATE SYSTEM: UTM ZONE 14 NORTH, NAD83, US SURVEY FEET

SIGNATURE: _____ DATE: _____

EXHIBIT
RH1



SUMMIT CARBON SOLUTIONS

PRELIMINARY PIPELINE ROUTE

DRAWN BY: AC		SUMMIT CARBON SOLUTIONS MIDWEST CARBON EXPRESS BRH LLLP TAX ID: 23-140-81-00-13-401 TRACT NUMBER: ND-BU-1070.000
CHECKED BY: JW		
MAP DATE: 5/17/2022		
SCALE: 1 inch = 455'		
REV NO.	DATE	DESCRIPTION
A	5/17/2022	INITIAL ISSUE
DRAWING NO. BW-MCE-ACQ-ND-BU-1070.000		PROJECT NO. 450959 SHEET NO. 01 of 01