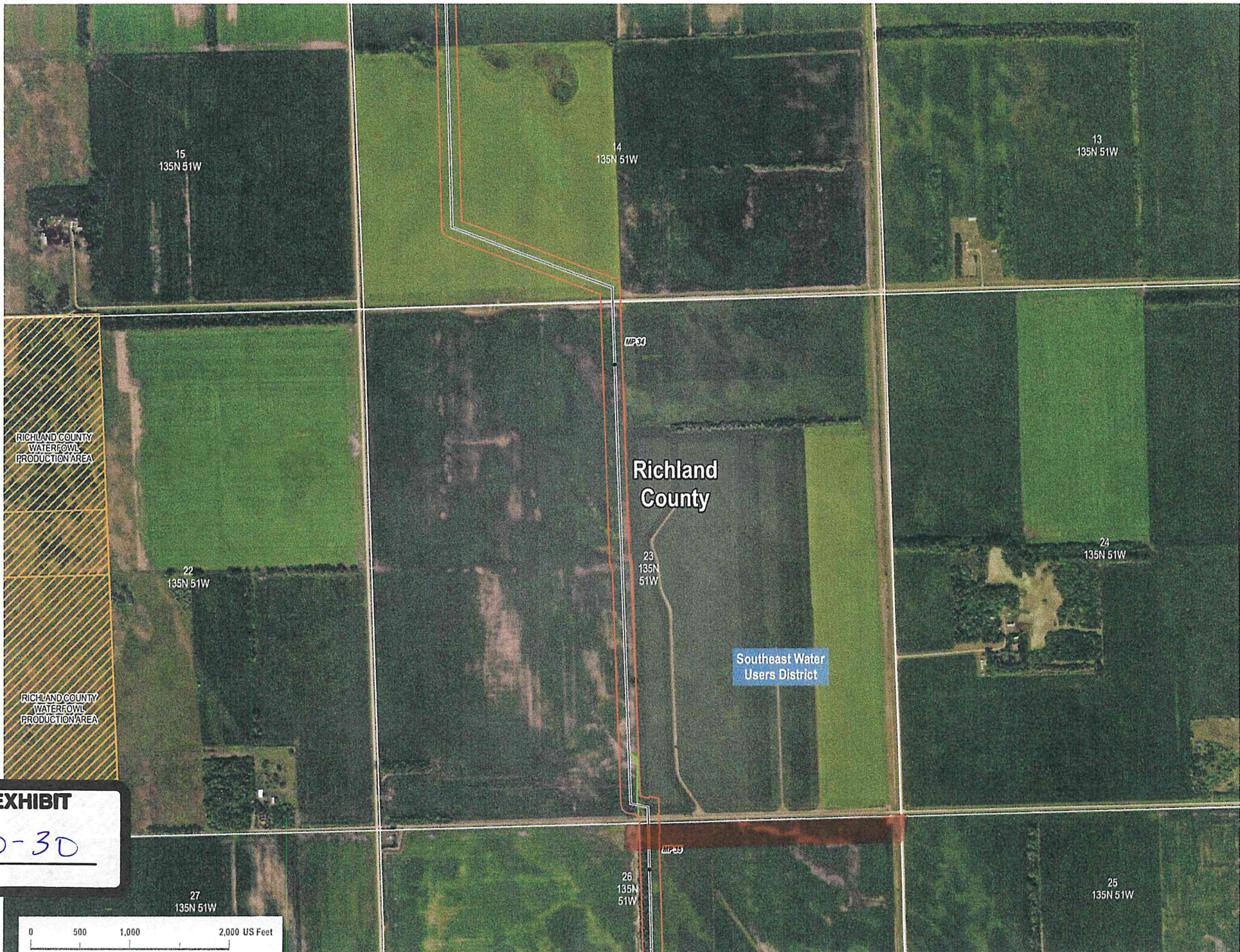


Pg
138
Docket
435.2



621

PU-22-391

Filed: 6/7/2024

Pages: 2

LO Exhibit LO-30 - Maps
Knoll Leibei, LLP, on behalf of the intervenors

EXHIBIT

LO-30

maps

0 500 1,000 2,000 US Feet

Pg
139
Docket
4352



27
135N 51W

26
135N
51W

25
135N 51W

Landmark

Southeast Water
Users District

Richland
County

TARAD-524 MP34 R2

MP33

34
135N 51W

35
135N
51W

36
135N 51W

MP37
02
134N 51W

01
134N 51W

0 500 1,000 2,000 US Feet