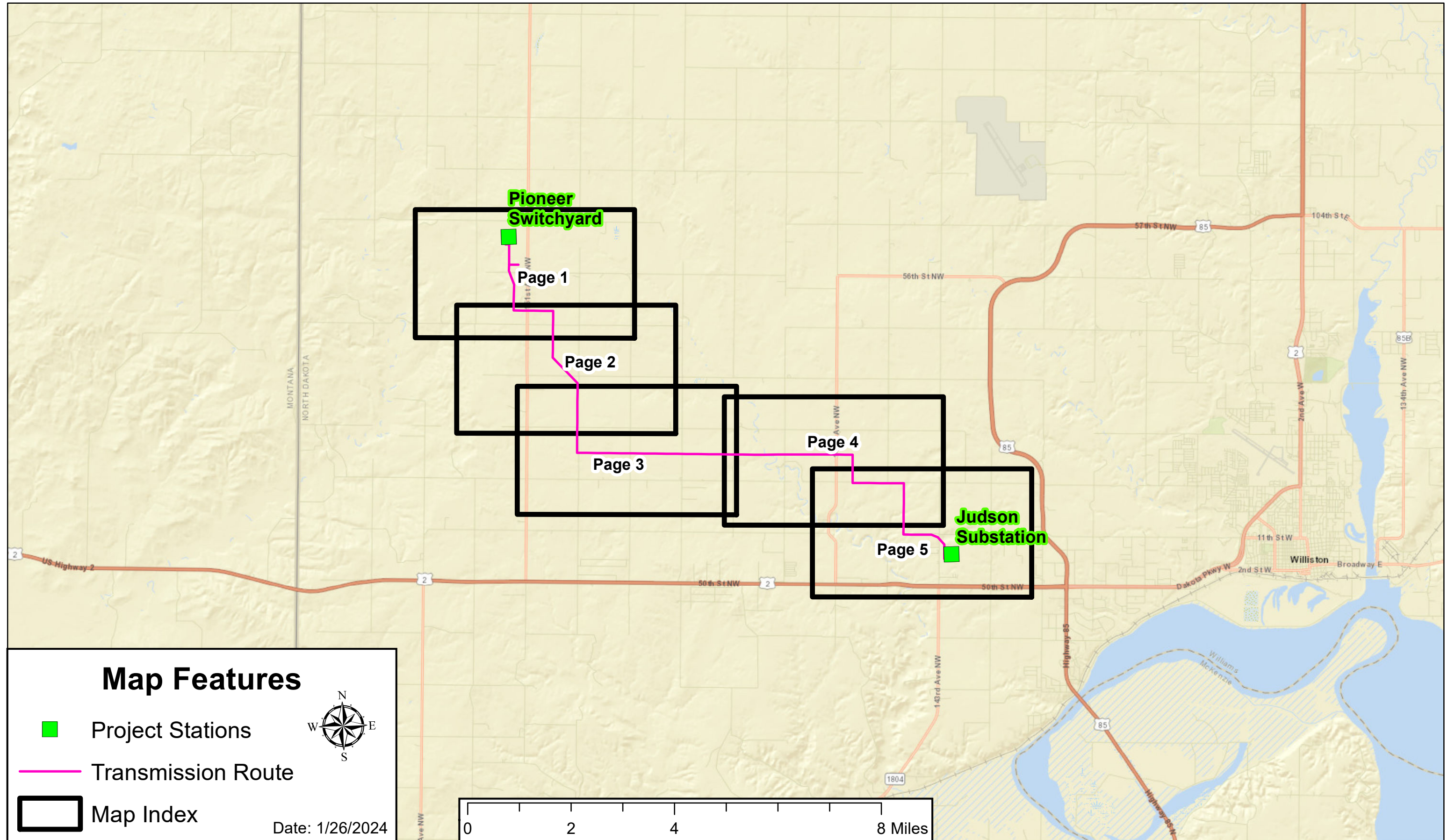
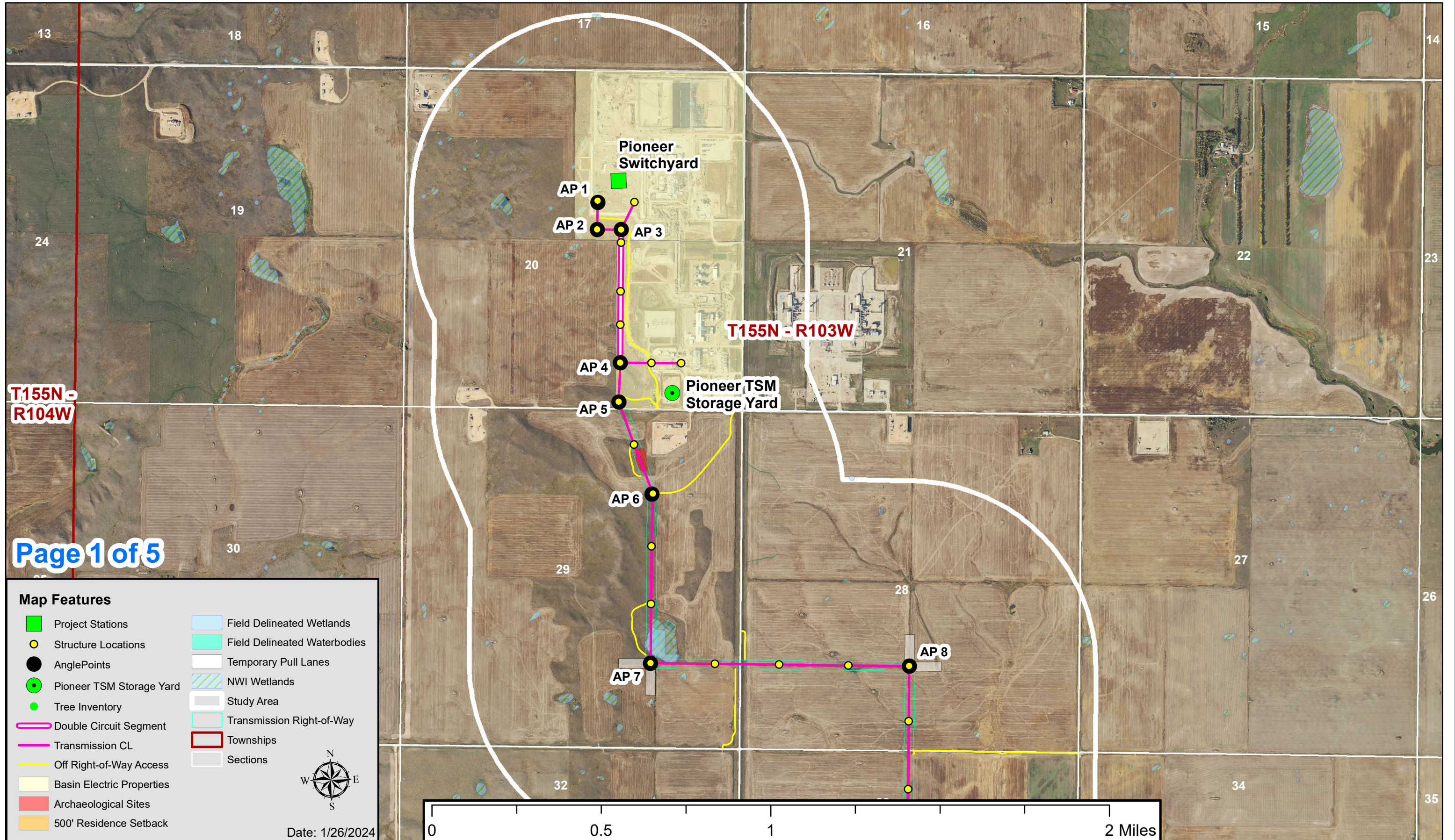


Pioneer to Judson 345-kV Transmission Line Project - Williams County, ND



Pioneer to Judson 345-kV Transmission Line Project - Williams County, ND



T155N - R104W

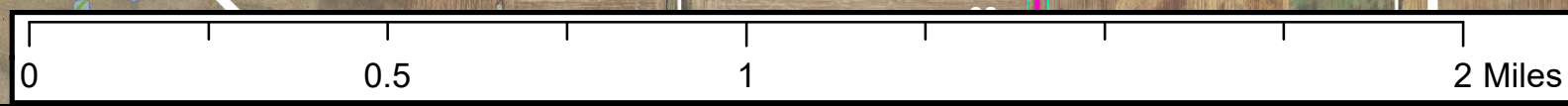
T155N - R103W

Page 1 of 5

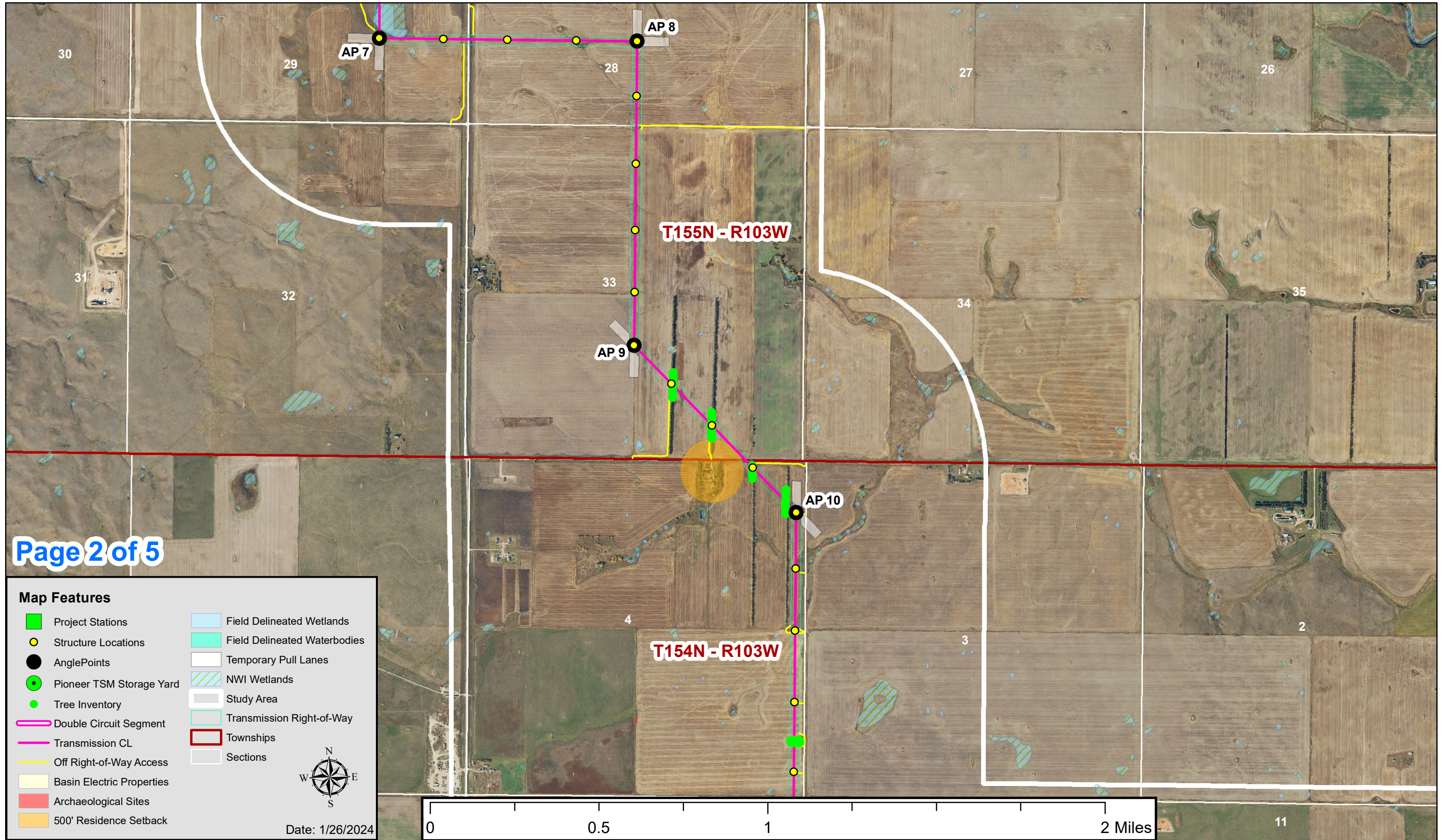
Map Features

Project Stations	Field Delineated Wetlands
Structure Locations	Field Delineated Waterbodies
AnglePoints	Temporary Pull Lanes
Pioneer TSM Storage Yard	NWI Wetlands
Tree Inventory	Study Area
Double Circuit Segment	Transmission Right-of-Way
Transmission CL	Townships
Off Right-of-Way Access	Sections
Basin Electric Properties	
Archaeological Sites	
500' Residence Setback	

Date: 1/26/2024



Pioneer to Judson 345-kV Transmission Line Project - Williams County, ND



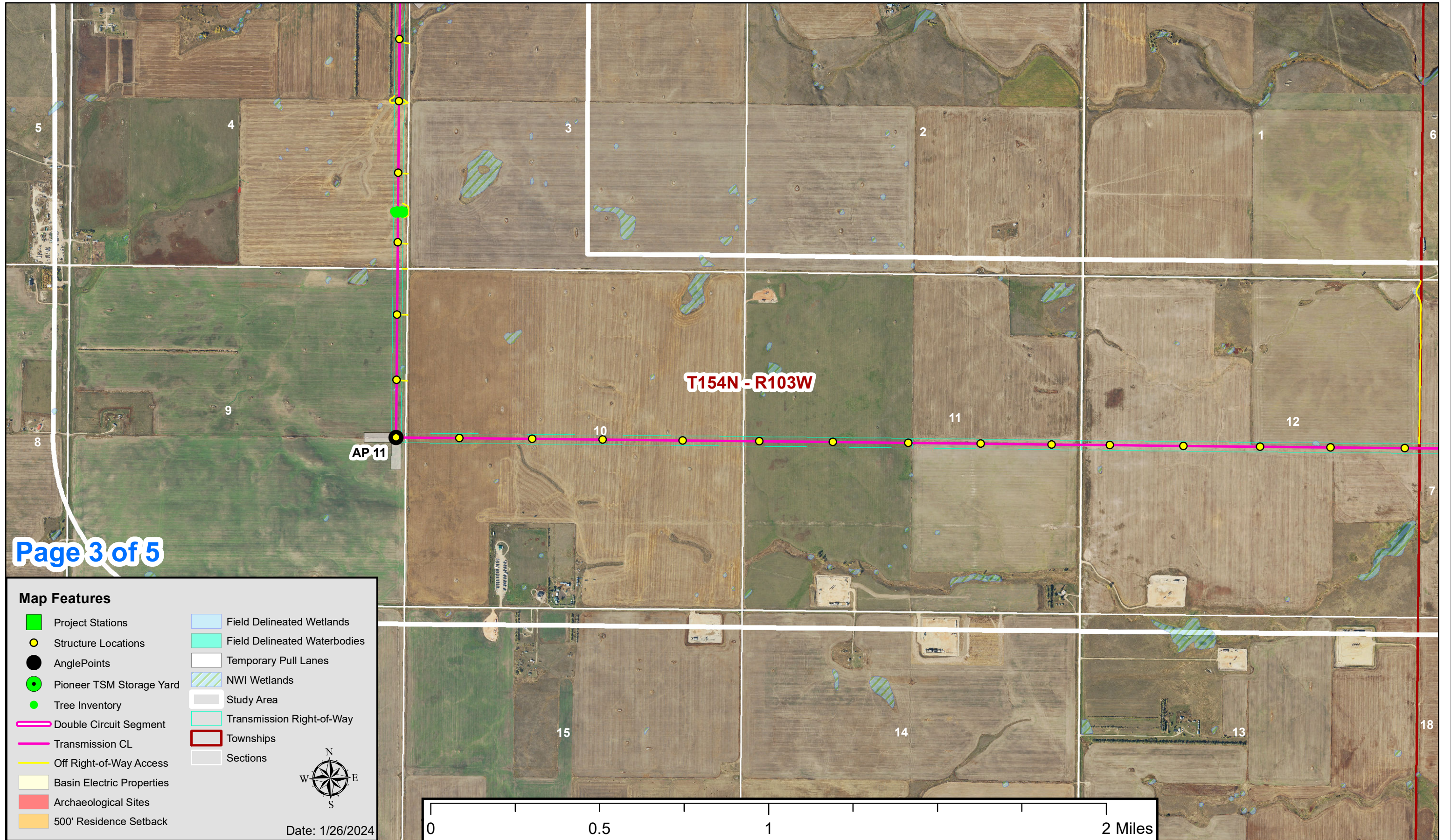
Page 2 of 5

Map Features

- | | |
|---------------------------|------------------------------|
| Project Stations | Field Delineated Wetlands |
| Structure Locations | Field Delineated Waterbodies |
| AnglePoints | Temporary Pull Lanes |
| Pioneer TSM Storage Yard | NWI Wetlands |
| Tree Inventory | Study Area |
| Double Circuit Segment | Transmission Right-of-Way |
| Transmission CL | Townships |
| Off Right-of-Way Access | Sections |
| Basin Electric Properties | |
| Archaeological Sites | |
| 500' Residence Setback | |

Date: 1/26/2024

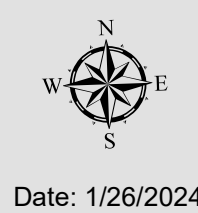
Pioneer to Judson 345-kV Transmission Line Project - Williams County, ND



Page 3 of 5

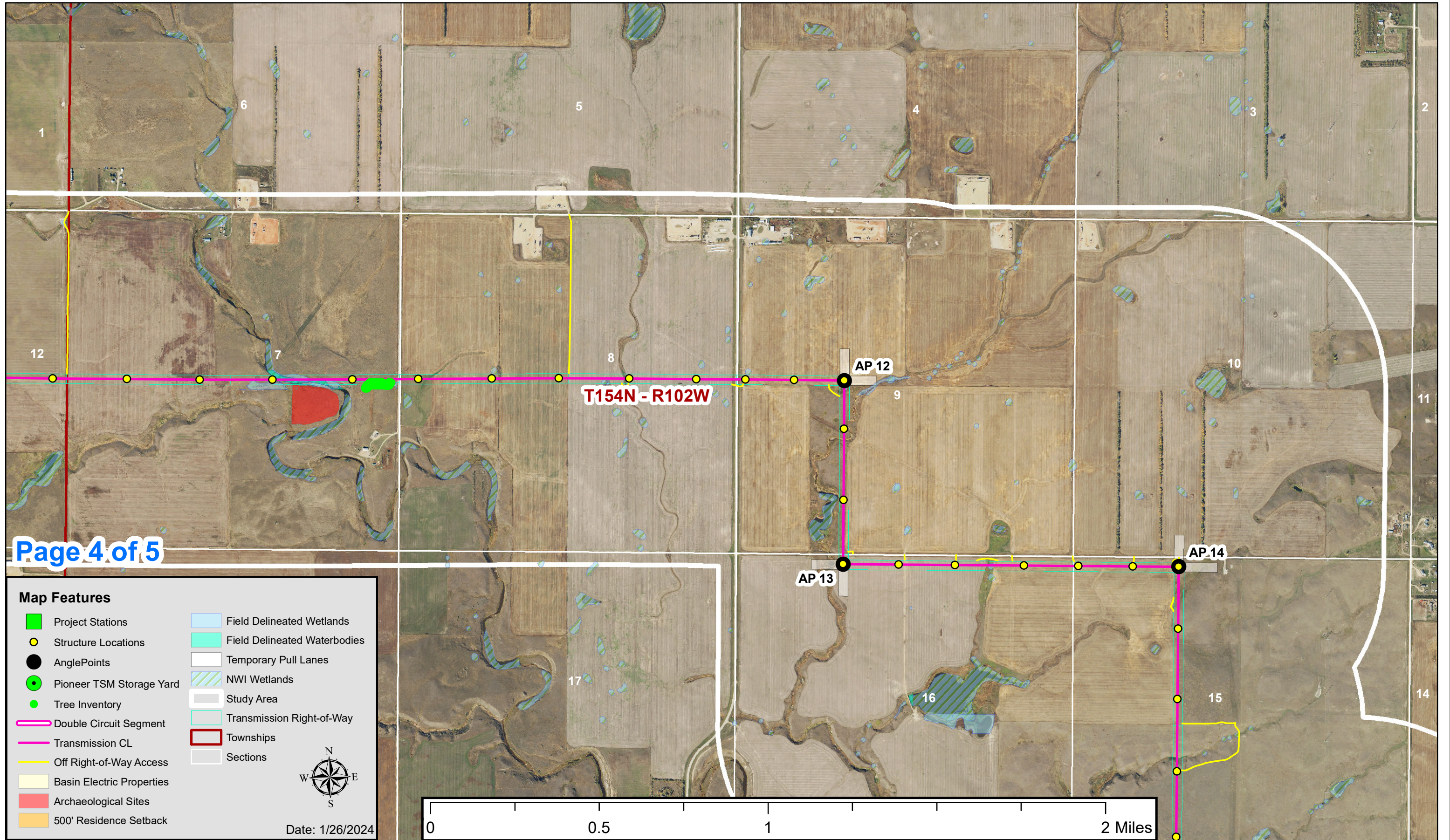
Map Features

- | | |
|---------------------------|------------------------------|
| Project Stations | Field Delineated Wetlands |
| Structure Locations | Field Delineated Waterbodies |
| AnglePoints | Temporary Pull Lanes |
| Pioneer TSM Storage Yard | NWI Wetlands |
| Tree Inventory | Study Area |
| Double Circuit Segment | Transmission Right-of-Way |
| Transmission CL | Townships |
| Off Right-of-Way Access | Sections |
| Basin Electric Properties | |
| Archaeological Sites | |
| 500' Residence Setback | |



Date: 1/26/2024

Pioneer to Judson 345-kV Transmission Line Project - Williams County, ND



Page 4 of 5

Map Features

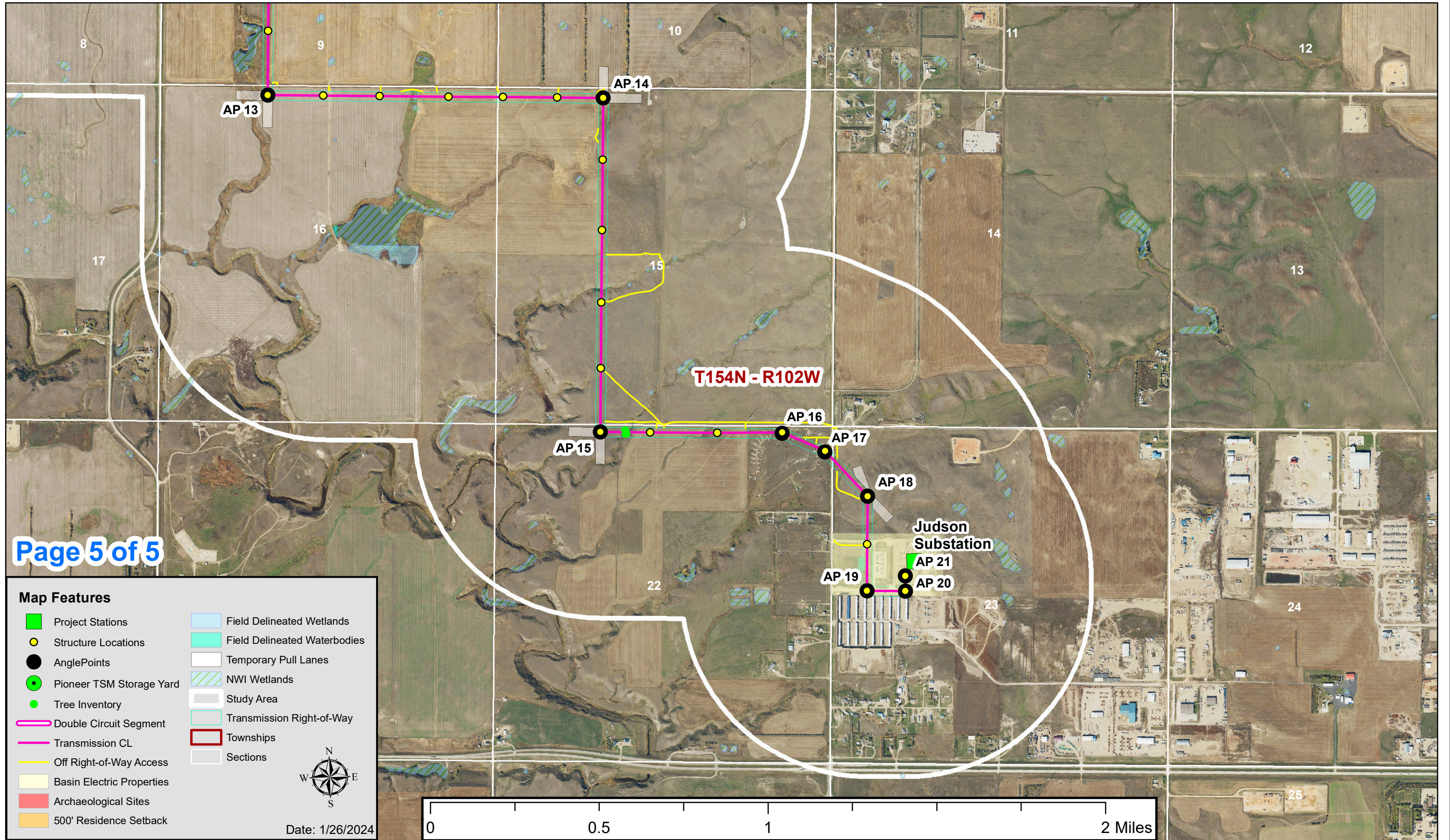
- | | |
|---------------------------|------------------------------|
| Project Stations | Field Delineated Wetlands |
| Structure Locations | Field Delineated Waterbodies |
| AnglePoints | Temporary Pull Lanes |
| Pioneer TSM Storage Yard | NWI Wetlands |
| Tree Inventory | Study Area |
| Double Circuit Segment | Transmission Right-of-Way |
| Transmission CL | Townships |
| Off Right-of-Way Access | Sections |
| Basin Electric Properties | |
| Archaeological Sites | |
| 500' Residence Setback | |



Date: 1/26/2024

0 0.5 1 2 Miles

Pioneer to Judson 345-kV Transmission Line Project - Williams County, ND



Page 5 of 5

Map Features

- | | |
|---------------------------|------------------------------|
| Project Stations | Field Delineated Wetlands |
| Structure Locations | Field Delineated Waterbodies |
| AnglePoints | Temporary Pull Lanes |
| Pioneer TSM Storage Yard | NWI Wetlands |
| Tree Inventory | Study Area |
| Double Circuit Segment | Transmission Right-of-Way |
| Transmission CL | Townships |
| Off Right-of-Way Access | Sections |
| Basin Electric Properties | |
| Archaeological Sites | |
| 500' Residence Setback | |



Date: 1/26/2024