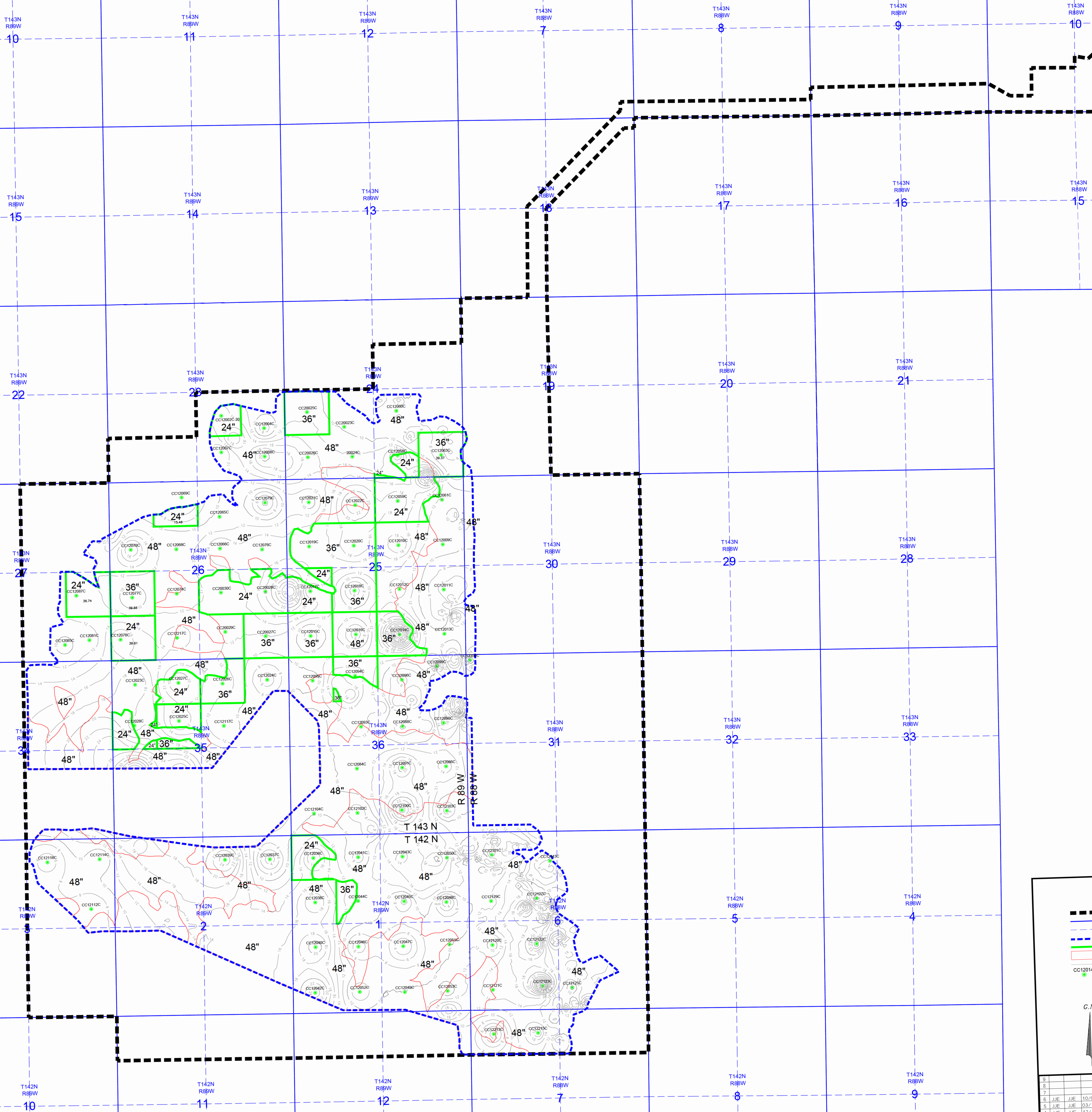


Casey and Julie Voigt v. Coyote Creek Mining Company, LLC

Case No. RC-23-348

2.5.7 Projected Soil Respread Depth Map

Voigt Exhibit 36



LEGEND

- PERMIT BOUNDARY
- SECTION LINE
- QUARTER LINE
- MINING DISTURBANCE LIMIT
- PROJECTED RESPREAD DEPTH BOUNDARY LINE
- PREBENCH BOUNDARY (OVERBURDEN DEPTH GREATER THAN 85 FT)
- GLACIAL TILL DEPTH
- OVERBURDEN SAMPLE HOLE LOCATION

G.N.

0 1000' 2000' 3000' 4000'

Scale 1" = 1000'

9			
8			
7			
6	JUE	JUE	10/07/23
5	JUE	JUE	03/11/23
4	JUE	JUE	12/14/20
3	SJF	SJF	06/23/17
2	SJF	SJF	12/21/16
1	SJF	SJF	10/03/14
0	SJF	SJF	09/09/14
NO. BY	APPD	DATE	
REVISIONS			

COYOTE CREEK MINING COMPANY, L.L.C.
 6602 17th Street SW
 Tap, ND 58580
 (701) 873-7800 - Fax (701) 873-7810

PROJECTED SOIL RESPREAD DEPTH MAP

SECTION 2.5.7

SCALE: 1" = 1,000' (Paper size 36" x 42") PROJECT: NACC-1302 Rev. 12
 No. 002