

Appendix F

Updated Shadow Flicker Analysis Report

Badger Wind, LLC
February 2024

THIS PAGE INTENTIONALLY BLANK



BADGER WIND FARM

Shadow Flicker Analysis Report

Badger Wind, LLC

Document No.: 10455420-HOU-R-02

Issue: C, **Status:** Final

Date: 26 January 2024





IMPORTANT NOTICE AND DISCLAIMER

1. This document is intended for the sole use of the Customer as detailed on the front page of this document to whom the document is addressed and who has entered into a written agreement with the DNV entity issuing this document ("DNV"). To the extent permitted by law, neither DNV nor any group company (the "Group") assumes any responsibility whether in contract, tort including without limitation negligence, or otherwise howsoever, to third parties (being persons other than the Customer), and no company in the Group other than DNV shall be liable for any loss or damage whatsoever suffered by virtue of any act, omission, or default (whether arising by negligence or otherwise) by DNV, the Group, or any of its or their servants, subcontractors, or agents. This document must be read in its entirety and is subject to any assumptions and qualifications expressed therein as well as in any other relevant communications in connection with it. This document may contain detailed technical data which is intended for use only by persons possessing requisite expertise in its subject matter.
2. This document is protected by copyright and may only be reproduced and circulated in accordance with the Document Classification and associated conditions stipulated or referred to in this document and/or in DNV's written agreement with the Customer. No part of this document may be disclosed in any public offering memorandum, prospectus, or stock exchange listing, circular, or announcement without the express and prior written consent of DNV. A Document Classification permitting the Customer to redistribute this document shall not thereby imply that DNV has any liability to any recipient other than the Customer.
3. This document has been produced from information relating to dates and periods referred to in this document. This document does not imply that any information is not subject to change. Except and to the extent that checking or verification of information or data is expressly agreed within the written scope of its services, DNV shall not be responsible in any way in connection with erroneous information or data provided to it by the Customer or any third party, or for the effects of any such erroneous information or data whether or not contained or referred to in this document.
4. Any forecasts, estimates, or predictions made herein are as of the date of this document and are subject to change due to factors beyond the scope of work or beyond DNV's control or knowledge. Nothing in this document is a guarantee or assurance of any particular condition or energy output.



Project name: Badger Wind Farm
Report title: Shadow Flicker Analysis Report
Customer: Badger Wind, LLC
401 N Michigan Ave, Suite 501
Chicago, IL 60611
Contact person: Andrew Krieger
Date of issue: 26 January 2024
Project No.: 10455420
Proposal Reference: 315673-HOU-P-01-B
Document No.: 10455420-HOU-R-02
Issue/Status: C/Final

DNV Energy USA Inc.
9665 Chesapeake Dr., Suite 435, San Diego, CA 92123 USA
Tel: +1 619 340 1800
Enterprise No.: 23-2625724

Task and objective:

This report presents the results of a shadow flicker analysis conducted by DNV on behalf of Badger Wind, LLC.

Prepared by: Aren Nercessian Project Siting Engineer, Environment and Permitting Services	Verified by: Justin Puggioni Siting and Acoustics Engineer, Environment and Permitting Services	Approved by: Gabriel Constantin Director, Environment and Permitting Services
--	--	--

Copyright © 2023 DNV. All rights reserved. Unless otherwise agreed in writing: (i) This publication or parts thereof may not be copied, reproduced or transmitted in any form, or by any means, whether digitally or otherwise; (ii) The content of this publication shall be kept confidential by the Customer; (iii) No third party may rely on its contents; and (iv) DNV undertakes no duty of care toward any third party. Reference to part of this publication which may lead to misinterpretation is prohibited.

Distribution:

- OPEN. Unrestricted distribution, internal and external.
- INTERNAL use only. Internal DNV document.
- CONFIDENTIAL. Distribution within DNV according to applicable contract.
- SECRET. Authorized access only.
- CUSTOMER'S DISCRETION

Keywords:
Shadow flicker, Badger Wind Farm, North Dakota

Issue	Date	Reason for Issue	Prepared by	Verified by	Approved by
C	26 January 2024	Modified Design Layout	A. Nercessian	J. Puggioni	G. Constantin



Table of contents

EXECUTIVE SUMMARY	V
1 INTRODUCTION	1
1.1 Shadow flicker definition	1
2 DESCRIPTION OF THE WIND FARM SITE	2
2.1 Site description	2
2.2 Wind farm layout and turbine model	2
2.3 Neighboring wind farms	2
2.4 Receptor locations	2
2.5 Applicable regulations	2
3 SHADOW FLICKER ASSESSMENT	3
3.1 Overview	3
3.2 Assessment methodology	3
3.3 Attenuations	4
3.4 Simplifications and conservative assumptions	5
4 RESULTS AND CONCLUSION	6
5 REFERENCES	8

Appendices

- APPENDIX A – WIND TURBINE COORDINATES
- APPENDIX B – RECEPTOR LOCATIONS & RESULTS
- APPENDIX C – SHADOW FLICKER PER DAY RECEPTOR RESULTS

List of tables

Table 3-1 Monthly cloud cover percentage (%) reduction	4
Table 3-2 Site specific directional frequencies (%) (Mast ID: M2000)	4

List of figures

Figure 4-1 Modeled hours of shadow flicker (Expected Case)	7
--	---



EXECUTIVE SUMMARY

DNV Energy USA Inc. (“DNV”) has conducted an analysis to predict the duration of shadow flicker expected to be experienced at receptors near the Badger Wind Farm (the “Project”). The site is located in Logan County and McIntosh County, North Dakota. At the request of Badger Wind, LLC (“the “Customer”), this analysis includes a total of 103 wind turbine generators (WTGs), of which up to 93 will ultimately be constructed. There are no neighboring wind farms or solar farms near the Project.

There were 44 receptors, representing inhabited residences, identified within 5,003 feet (1,525 m) of a Project turbine, which is the equivalent of ten tip heights of the WTG.

While there are no regulatory limits regarding shadow flicker directly applicable to the Project, the Customer has voluntarily kept annual shadow flicker durations under 30 hours per year at non-participant receptors without a waiver, which is the industry standard, as recommended by American Wind Energy Association (AWEA). In the current model, all receptors respect the 30-hour limit, regardless of participant or waiver status.

Receptor 475 is predicted to experience the most shadow flicker per year (expected case), with a total of 27 hours. This is a participating receptor. 40 of the 44 receptors included in this assessment have predicted annual shadow flicker durations under 10 hours, which is well under the recommended annual limit.

There are certain simplifications and conservative assumptions inherent within the model that may result in an overestimation of shadow flicker duration. These are further explained in the report.



1 INTRODUCTION

Badger Wind, LLC (the “Customer”) retained DNV Energy USA Inc. (“DNV”) to perform a shadow flicker assessment for the Badger Wind Farm (the “Project”) located in Logan County and McIntosh County, North Dakota.

The Project layout considered for the analysis includes 103 GE 2.8-127 wind turbine generators with a hub height of 292 ft (89 m). The turbine layout was provided by the Customer [1]. Only up to 93 of the 103 turbines in this analysis are planned to be constructed.

The GE 2.8-127 has a maximum blade tip height of 500 feet (152.5 m), a hub height of 292 feet (89 m), and a rotor diameter of 417 feet (127 m).

The purpose of this shadow flicker assessment is to calculate the predicted shadow flicker duration for the proposed Project at nearby receptor locations. This report includes a brief presentation of the Project site, a description of the shadow flicker assessment methodology, results of the analysis including a map illustrating areas prone to shadow flicker and concluding comments. This report presents the results of DNV’s analysis.

1.1 Shadow flicker definition

Shadow flicker is defined as the modulation of light levels resulting from the periodic passage of a rotating wind turbine blade between the sun and a viewer. The duration of shadow flicker experienced at a specific location can be determined using a purely geometric analysis which takes into account the relative positions of the sun throughout the year, the wind turbines at the site, and the viewer. This method has been used to determine the shadow flicker duration at sensitive locations in the vicinity of the Project.

It should be noted, as described in Section 3, that there are certain simplifications and conservative assumptions inherent within the model that may result in an overestimation of shadow flicker duration.



2 DESCRIPTION OF THE WIND FARM SITE

2.1 Site description

The Project is situated in relatively simple terrain, consisting of flat farmland, with wind turbine base elevations ranging from approximately 2,000 feet to 2,200 feet above sea level. The ground cover on and near the site is primarily composed of farmland and open fields. Dwellings are interspersed throughout the Project site.

The site is in Logan County and McIntosh County, west of the town of Wishek, North Dakota.

2.2 Wind farm layout and turbine model

The current Project layout consists of 103 GE 2.8-127 WTGs. Ultimately, up to 93 of these turbines will be constructed. The turbine layout was provided by the Customer [1].

The GE 2.8-127 has a maximum blade tip height of 500 feet (152.5 m), a hub height of 292 feet (89 m), and a rotor diameter of 417 feet (127 m).

The coordinates of the Project equipment included in the assessment are presented in Appendix A.

2.3 Neighboring wind farms

There are no neighboring wind farms in the vicinity of the Project.

2.4 Receptor locations

A list of receptors was provided by the Customer [4], most of which were clustered in a nearby town of Wishek over 1 mile from the nearest turbine. DNV completed a desktop review of these receptor locations in November 2023 and identified one additional location.

Of the total number of identified receptors, results for 44 receptors, representing inhabited residence, located within the affected study area defined in Section 3.2 are reported. Coordinates of each receptor are presented in Appendix B.

2.5 Applicable regulations

No applicable shadow flicker regulations were identified at the state and county level when the report was issued.

In 2020, the American Wind Energy Association (AWEA) issued a publication [5] recommending 30 hour per year limits for shadow flicker duration, based on the “expected” or “realistic” case,

Additionally, the 2022 PSC order states: *The Project will comply with Badger Wind’s voluntary commitment of 30 hours per year or less of shadow flicker at all residences, absent a waiver.*

The Customer continues to voluntarily apply this shadow flicker duration limit at all inhabited participating and non-participating receptors, absent a waiver.

3 SHADOW FLICKER ASSESSMENT

3.1 Overview

Shadow flicker may occur under certain combinations of circumstances with regard to the sun's position and wind direction; when the sun passes behind the rotating blades of a wind turbine, a moving shadow is cast in front of or behind the turbine. When viewed from a stationary position, the moving shadows cause periodic flickering of the sunlight, otherwise known as the "shadow flicker" phenomenon.

The effect is most noticeable inside buildings, where the flicker appears through a window opening. The likelihood and duration of the effect depends on a number of variables, namely:

- Orientation of the building and windows relative to the turbine;
- Wind direction: The shape and intensity of the shadow are determined by the position of the sun relative to the blades (the turbine rotor continuously yaws to face the wind so the rotor plane will always be perpendicular to the wind direction);
- Distance from turbine: The farther the observer from the turbine, the less pronounced the effect;
- Turbine height and rotor diameter: A larger turbine rotor diameter will cast a larger shadow, meaning a larger area will be prone to incidences of shadow flicker;
- Time of year and day: Position of sun relative to the horizon;
- Weather conditions: Cloud cover reduces the occurrence of shadow flicker;
- Vegetation and other obstacles that help to mask shadows;
- Operational status of turbines.

3.2 Assessment methodology

The number of hours of shadow flicker experienced annually at a given location can be calculated using a geometrical model which takes into account the sun's position, topography of the wind farm site, and wind turbine specifications such as rotor diameter and hub height.

Shadow flicker has been calculated at the subject receptors (i.e. residences) at a height of 6.5 feet (2 m) to represent ground floor windows. Rather than facing a particular direction, shadow flicker receptors (windows) are simulated as horizontal planes, meaning they experience shadow flicker over 360°, often referenced as the "greenhouse" scenario; this assumption therefore represents a worst-case scenario. Simulations with WindFarmer Analyst software have been carried out with a resolution of 1 minute; if shadow flicker occurs in any 1-minute period, the model registers this as 1 minute of shadow flicker.

It is generally accepted that shadow flicker from wind turbines does not occur beyond a distance, D, from a given wind turbine. The UK wind industry considers this distance to be equivalent to 10 rotor diameters [2], while the Danish wind industry suggests a value of between 1,640 feet and 3,281 feet (500 m and 1,000 m) [3]. Similarly to the UK standard, the common approach for US projects is to use 10 rotor diameters. However, DNV has adopted a conservative approach and has assumed the length, D, that a shadow can be cast to be defined as follows:

$$D = 10 \times (\text{hub height} + \text{rotor radius})$$

Beyond this distance, a viewer does not perceive the turbine blade to be chopping the light, but rather as an object passing in front of the sun.



The annual hours of shadow flicker at receptors have been calculated in two steps:

- 1) A “worst case” or astronomical worst-case, which represents the number of hours of annual shadow flicker that does not take into account attenuating factors, such as cloud cover or the site-specific wind rose.
- 2) An “expected case” that considers cloud cover and the site-specific wind rose in order to get a more realistic estimate, as described below. It is noted that additional attenuation factors are still not considered (see Section 3.4), and therefore, the “expected case” is still conservative.

In the case of this Project, 10 x (hub height + rotor radius) is equal to 5,003 feet (1,525 m).

The annual hours of shadow flicker at receptors have been calculated using an “expected case” approach.

An “expected case” considers cloud cover and the site-specific wind rose in order to get a more realistic shadow flicker estimate, as described below. It is noted that additional attenuation factors are still not considered (see Section 3.4), and therefore, the “expected case” is still conservative.

3.3 Attenuations

Shadow flicker calculations can be adjusted using average monthly cloud coverage, which is based on historical meteorological data and statistics. According to data gathered from the Bismarck, ND, and Aberdeen, SD, National Oceanic and Atmospheric Administration (NOAA) stations, monthly cloud cover can be estimated and applied as a percentage decrease in flicker duration. Cloud cover percentages are shown in Table 3-1.

Table 3-1 Monthly cloud cover percentage (%) reduction

Month	Jan	Feb	Mar	Apr	May	Jun	Jul	Aug	Sep	Oct	Nov	Dec
Percentage	64.1	64.9	68.0	65.0	61.3	55.9	43.5	43.5	50.8	56.5	69.2	66.1

The annual site-specific wind direction distribution was used in order to consider the probability of the turbines being oriented in a given direction. This produces a more accurate estimate of shadow flicker duration at receptors. The directional wind frequency that was measured on site [6] is shown in Table 3-2.

Table 3-2 Site specific directional frequencies (%) (Mast ID: M2000)

Sector (°)	0	30	60	90	120	150	180	210	240	270	300	330
Percentage	9.6	6.4	5.1	5.1	6.7	10.4	10.2	6.2	7.7	8.6	11.0	12.9

Note: The sectors are defined as 30° sectors centered at the given value.

No attempt has been made to account for vegetation or other shielding effects around each shadow receptor in the calculations of shadow flicker duration. Similarly, turbine operational shut-down has not been considered in this analysis. Consideration of these factors could lead to a reduction of the levels of shadow flicker predicted.

3.4 Simplifications and conservative assumptions

Shadow flicker duration calculated in the manner described above has several limitations and may over-estimate the annual number of hours of shadow flicker experienced at a specified location for several reasons, namely:

- The modeling of the wind turbine blades as discs rather than individual blades results in an overestimate of shadow flicker duration.
- Turbine blades are of non-uniform thickness with the thickest part of the blade (maximum chord) close to the hub and the thinnest part (minimum chord) at the tip. Diffusion of sunlight, as discussed above, results in a limit to the maximum distance that a shadow can be perceived. This maximum distance will also be dependent on the thickness of the turbine blade and the human threshold for perception of light intensity variation. As such, a shadow cast by the blade tip will be shorter than the shadow cast by the thickest part of the blade [7]. These distinctions are not modeled and shadow cast from any part of the blade is considered a shadow flicker event.
- Additionally, the orientation of windows on a given residence has not been taken into account, i.e. the model assumes that a window is always facing the turbine(s).
- Aerosols (moisture, dust, smoke, etc.) in the atmosphere have the ability to influence shadows cast by a wind turbine. The length of the shadow cast by a wind turbine is dependent on the degree that direct sunlight is diffused, which in turn is dependent on the amount of dispersants (humidity, smoke and other aerosols) in the path between the light source (sun) and the receiver [7]. The model does not consider any such factors.
- The presence of vegetation or other physical barriers around a receptor location may shield the view of the wind turbine, and therefore reduce the incidence of shadow flicker. No physical barriers have been modeled.
- Periods where Project wind turbines are not in operation due to low winds, high winds, or for operational and maintenance reasons will also reduce shadow flicker occurrence but are not considered herein.

In light of the reasons listed above, it is likely that the shadow flicker durations presented in Appendix B can be regarded as conservative.



4 RESULTS AND CONCLUSION

The results of the shadow flicker assessment (in terms of expected total hours per year) are presented in tabular format in Appendix B for all receptor locations in the study area.

Detailed daily results per wind turbine (in terms of maximum minutes per day) for every receptor experiencing shadow flicker are shown in Appendix C.

Results for the “expected case” in hours per year take into account the average monthly cloud cover from two NOAA meteorological stations at Bismarck, ND, and Aberdeen, SD. The annual site specific wind directional frequencies were gathered from a meteorological mast deployed on site [6].

A detailed map illustrating predicted “expected case” shadow flicker duration at receptors lying within 5,003 feet (1,525 m) of the Badger Wind Farm are presented in Figure 4-1. The map takes into account average monthly cloud cover and annual wind direction distribution. Shadow flicker is shown in isopleths of 30 hours per year or more.

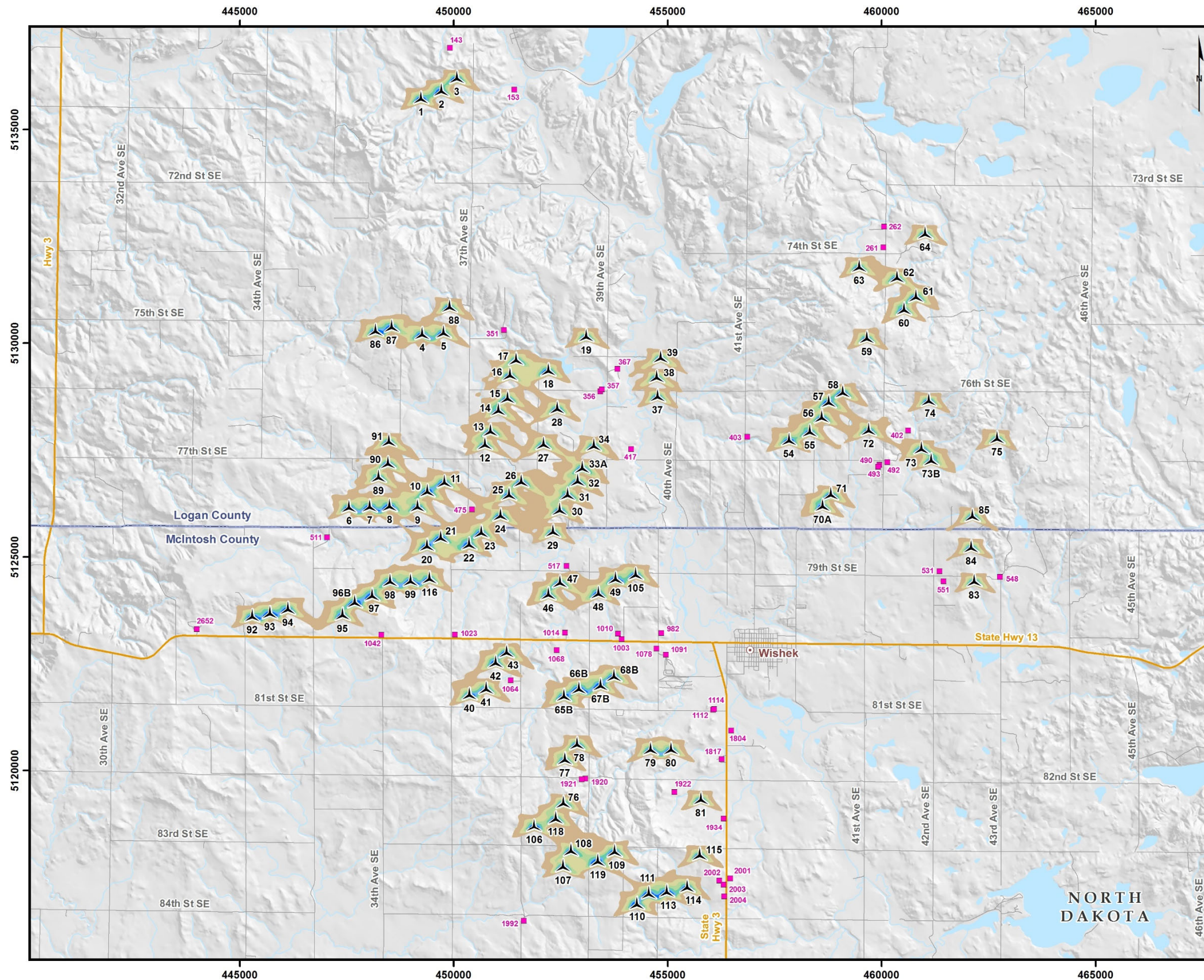
While there are no regulatory limits regarding shadow flicker directly applicable to the Project, the Customer has voluntarily kept annual shadow flicker durations under 30 hours per year at non-participant receptors without a waiver, which is the industry standard, as recommended by AWEA. Additionally, the 2022 PSC order states: *The Project will comply with Badger Wind’s voluntary commitment of 30 hours per year or less of shadow flicker at all residences, absent a waiver.* In the current model, all receptors respect the 30-hour limit, regardless of waiver status.

Receptor 475 is predicted to experience the most shadow flicker per year (expected case), with a total of 27. This is a participating receptor. 40 of the 44 receptors included in this assessment have predicted annual shadow flicker durations under 10 hours, which is well under the recommended annual limit.

As described in Section 3, certain conservative assumptions have been made in this analysis, which likely results in an overestimation of the shadow flicker impacts that may be experienced at each receptor. Additionally, only up to 93 of the 103 turbines included in this analysis will be built. Results may be overestimated in areas where turbines may not end up being constructed.

The astronomical worst case represents a theoretical, extreme situation in which no cloud cover occurs at any point during the year. Furthermore, it assumes that all turbine rotors are always perpendicular to any given receptor, which is unfeasible. As a result, the astronomical worst case can be assumed to be an extreme, theoretical example which is extremely unlikely to occur, and can be considered informative.

THIS PAGE INTENTIONALLY BLANK



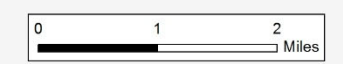
Legend

- Wind Turbine GE 2.8-127
- Inhabited Residence*
- County Boundary

Shadow Flicker (hours/year)**

- 30 - 59
- 60 - 89
- 90 - 119
- 120 - 149
- 150 - 179
- 180 and over

*Only positions within 10x total tip height (5,000 ft) of the Project turbines are included.
 **This map presents the shadow flicker calculation taking into account monthly cloud cover and annual wind direction distribution.



Orsted
Badger Wind

SHADOW FLICKER MAP

10455420-240124-CV
 January 24, 2024
 Projection: UTM 14 NAD 83
 Sources: ArcGIS Online, 3DEP, TIGER

DNV

Figure 4-1 Modeled hours of shadow flicker (Expected Case)

5 REFERENCES

- [1] Badger Wind Turbine locations received 9 November 2023
- [2] Department for Business Enterprise & Regulatory Reform, UK, "Onshore Wind: Shadow Flicker", <http://webarchive.nationalarchives.gov.uk/20090609003228/http://www.berr.gov.uk/whatwedo/energy/sources/renewables/planning/onshore-wind/shadow-flicker/page18736.html> . Accessed December 2021.
- [3] Danish Wind Industry Association, "Shadow variations from Wind turbines", <http://xn--drmstrre-64ad.dk/wp-content/wind/miller/windpower%20web/en/tour/env/shadow/shadow2.htm> . Accessed December 2021.
- [4] Receptor locations sent by Orsted to DNV, "Receptors_Badger_230724.shp" with some subsequent minor updates based on a field verifications performed in August 2023.
- [5] AWEA, *Wind Turbines and Shadow Flicker: Facts and Proven Mitigation Strategies*. November 2020
- [6] Annual site-specific wind direction distribution for Badger Wind sent by email, by Orsted to DNV on 22 September 2021, "M2000_WindRose_12sector.xlsx"
- [7] Freud H-D, Kiel F.H., "Influences of the opaqueness of the atmosphere, the extension of the sun and rotor blade profile on the shadow impact of wind turbine", DEWI Magazine No. 20 pp 43-51, February 2002.

APPENDIX A – WIND TURBINE COORDINATES

ID	UTM Zone 14, NAD 83 Datum	
	Easting [m]	Northing [m]
1	449232	5135638
2	449714	5135812
3	450071	5136111
4	449260	5130118
5	449758	5130152
6	447550	5126069
7	448035	5126080
8	448497	5126098
9	449154	5126084
10	449386	5126438
11	449781	5126652
12	450728	5127537
13	450860	5127853
14	451041	5128333
15	451256	5128620
16	451315	5129160
17	451460	5129521
18	452210	5129270
19	453099	5130065
20	449376	5125160
21	449699	5125356
22	450359	5125200
23	450646	5125478
24	451091	5125879
25	451295	5126363
26	451577	5126666
27	452097	5127541
28	452421	5128376
29	452323	5125495
30	452479	5126004
31	452664	5126361
32	452894	5126680
33A	453003	5126987
34	453276	5127510
37	454764	5128664

ID	UTM Zone 14, NAD 83 Datum	
	Easting [m]	Northing [m]
38	454742	5129112
39	454835	5129566
40	450370	5121682
41	450760	5121822
42	450982	5122434
43	451235	5122676
46	452216	5124027
47	452481	5124306
48	453381	5124054
49	453778	5124395
54	457834	5127638
55	458325	5127835
56	458601	5128175
57	458765	5128525
58	459094	5128759
59	459656	5130026
60	460523	5130695
61	460803	5130994
62	460359	5131441
63	459474	5131693
64	461020	5132473
65B	452574	5121646
66B	452928	5121822
67B	453431	5121899
68B	453743	5122114
70A	458619	5126099
71	458816	5126367
72	459697	5127871
73	460934	5127435
73B	461159	5127167
74	461104	5128566
75	462699	5127679
76	452565	5119147
77	452596	5120163
78	452882	5120526

ID	UTM Zone 14, NAD 83 Datum	
	Easting [m]	Northing [m]
79	454604	5120400
80	455082	5120401
81	455774	5119232
83	462165	5124334
84	462095	5125131
85	462125	5125862
86	448174	5130196
87	448552	5130291
88	449901	5130762
89	448243	5126773
90	448461	5127094
91	448482	5127610
92	445292	5123520
93	445705	5123590
94	446125	5123690
95	447398	5123549
96B	447688	5123845
97	448092	5124004
98	448512	5124333
99	448991	5124344
105	454252	5124496
106	451880	5118601
107	452555	5117661
108	452740	5118025
109	453762	5118008
110	454279	5116798
111	454557	5117036
113	454981	5117083
114	455457	5117189
115	455748	5117927
116	449433	5124398
118	452384	5118784
119	453366	5117786

APPENDIX B – RECEPTOR LOCATIONS & RESULTS

Receptor ID	UTM Easting [m]	UTM Northing [m]	Total Hours in Year [hrs/yr]		Closest Turbine		
			Astronomical Worst Case	Expected Case with Monthly Cloud Cover and Wind Rose	Distance [ft]	Distance [m]	Turbine ID
475	450426	5126113	110	27	2204	672	23
261	460040	5132243	57	12	2587	789	63
367	453827	5129394	47	12	3140	957	38
1064	451329	5122110	48	11	1558	475	42
357	453463	5128918	38	9	3854	1175	28
492	460131	5127219	34	9	2568	783	72
356	453428	5128874	32	8	3686	1123	28
1922	455159	5119498	32	8	2200	671	81
548	462767	5124527	35	8	2073	632	83
1068	452406	5122819	32	7	3692	1125	66B
417	454147	5127522	33	7	2858	871	34
517	452631	5124788	29	7	1652	504	47
1042	448303	5123172	23	7	2817	859	97
490	459950	5127152	29	7	2501	762	72
2004	456317	5117069	26	7	2848	868	114
493	459917	5127112	29	7	2592	790	72
551	461444	5124433	26	6	2389	728	83
2001	456463	5117481	25	6	2764	842	115
1023	450024	5123180	24	6	3984	1214	42
531	461350	5124665	25	5	2884	879	84
2002	456205	5117426	23	5	2224	678	115
403	456860	5127809	19	5	3246	989	54
2003	456305	5117334	18	4	2670	814	115
351	451171	5130311	14	4	2760	841	17
402	460620	5127961	15	4	2007	612	73
1078	454738	5122856	19	3	4070	1241	68B
262	460052	5132724	12	3	3281	1000	64
1817	456265	5120265	9	3	3750	1143	81
153	451414	5135938	7	2	4440	1353	3
1091	454957	5122712	8	2	4436	1352	68B
2652	443993	5123311	6	2	4317	1316	92
1920	453076	5119807	10	1	1960	597	77
1934	456308	5118878	8	1	2101	640	81
1804	456482	5120937	5	1	4917	1499	80
1014	452598	5123225	5	1	2681	817	46
511	447037	5125452	4	1	2635	803	6
1921	452989	5119794	0	0	1768	539	77
143	449910	5136911	0	0	2675	815	3
1010	453837	5123201	0	0	2590	789	48
1003	453922	5123072	0	0	3086	941	68B
982	454849	5123219	0	0	4628	1411	105
1112	456064	5121418	0	0	4635	1413	80
1114	456081	5121438	0	0	4721	1439	80
1992	451637	5116504	0	0	4848	1478	107



DNV

APPENDIX C – SHADOW FLICKER PER DAY RECEPTOR RESULTS

Receptor: 153

Calculation: Shadow Flicker

Rotor Orientation Type: SphereAroundRotorCentre

Timezone: CST (UTC-06:00) *Daylight savings time is not considered in the timestamps in this document

Summary of turbine results:

Turbine	Annual Hours (hh:mm)
3	6:37

Astronomical Worst Case (hours): 7

Reduction Factor: 0.29

Expected Case (hours): 2

Summary of results per day:

*Days with no shadow flicker events have been excluded from the table below

Turbine 3

Day	Maximum Minutes	Start Time	End Time
2-Apr	3	18:45	18:48
3-Apr	6	18:43	18:49
4-Apr	9	18:41	18:50
5-Apr	12	18:40	18:52
6-Apr	14	18:39	18:53
7-Apr	16	18:38	18:54
8-Apr	18	18:38	18:56
9-Apr	20	18:37	18:57
10-Apr	21	18:37	18:58
11-Apr	20	18:38	18:58
12-Apr	19	18:38	18:57
13-Apr	16	18:39	18:55
14-Apr	14	18:40	18:54
15-Apr	9	18:42	18:51
25-Aug	10	18:44	18:54
26-Aug	14	18:41	18:55
27-Aug	17	18:40	18:57
28-Aug	19	18:38	18:57
29-Aug	21	18:37	18:58
30-Aug	20	18:37	18:57
31-Aug	19	18:36	18:55
1-Sep	18	18:36	18:54
2-Sep	16	18:36	18:52
3-Sep	14	18:36	18:50
4-Sep	12	18:36	18:48
5-Sep	10	18:36	18:46
6-Sep	7	18:37	18:44
7-Sep	3	18:39	18:42

Receptor: 261

Calculation: Shadow Flicker

Rotor Orientation Type: SphereAroundRotorCentre

Timezone: CST (UTC-06:00) *Daylight savings time is not considered in the timestamps in this document

Summary of turbine results:

Turbine	Annual Hours (hh:mm)
63	43:10
64	13:22

Astronomical Worst Case (hours): 57

Reduction Factor: 0.21

Expected Case (hours): 12

Summary of results per day: *Days with no shadow flicker events have been excluded from the table below

Turbine 63 64

Day	Maximum			Maximum		
	Minutes	Start Time	End Time	Minutes	Start Time	End Time
1-Jan	40	15:43	16:23	0	00:00	00:00
2-Jan	39	15:44	16:23	0	00:00	00:00
3-Jan	40	15:44	16:24	0	00:00	00:00
4-Jan	39	15:45	16:24	0	00:00	00:00
5-Jan	40	15:45	16:25	0	00:00	00:00
6-Jan	39	15:46	16:25	0	00:00	00:00
7-Jan	39	15:46	16:25	0	00:00	00:00
8-Jan	39	15:47	16:26	0	00:00	00:00
9-Jan	39	15:47	16:26	0	00:00	00:00
10-Jan	38	15:48	16:26	0	00:00	00:00
11-Jan	38	15:48	16:26	0	00:00	00:00
12-Jan	38	15:49	16:27	0	00:00	00:00
13-Jan	37	15:50	16:27	0	00:00	00:00
14-Jan	37	15:50	16:27	0	00:00	00:00
15-Jan	36	15:51	16:27	0	00:00	00:00
16-Jan	35	15:52	16:27	0	00:00	00:00
17-Jan	33	15:53	16:26	0	00:00	00:00
18-Jan	32	15:54	16:26	0	00:00	00:00
19-Jan	31	15:55	16:26	0	00:00	00:00
20-Jan	29	15:56	16:25	0	00:00	00:00
21-Jan	28	15:57	16:25	0	00:00	00:00
22-Jan	26	15:58	16:24	0	00:00	00:00
23-Jan	23	16:00	16:23	0	00:00	00:00
24-Jan	21	16:01	16:22	0	00:00	00:00
25-Jan	16	16:04	16:20	0	00:00	00:00
26-Jan	10	16:07	16:17	0	00:00	00:00
13-Apr	0	00:00	00:00	2	06:17	06:19
14-Apr	0	00:00	00:00	6	06:15	06:21
15-Apr	0	00:00	00:00	8	06:14	06:22
16-Apr	0	00:00	00:00	11	06:12	06:23
17-Apr	0	00:00	00:00	14	06:10	06:24
18-Apr	0	00:00	00:00	17	06:08	06:25
19-Apr	0	00:00	00:00	18	06:07	06:25
20-Apr	0	00:00	00:00	20	06:05	06:25
21-Apr	0	00:00	00:00	22	06:03	06:25
22-Apr	0	00:00	00:00	23	06:02	06:25
23-Apr	0	00:00	00:00	25	06:00	06:25
24-Apr	0	00:00	00:00	27	05:58	06:25
25-Apr	0	00:00	00:00	27	05:57	06:24
26-Apr	0	00:00	00:00	28	05:56	06:24
27-Apr	0	00:00	00:00	27	05:56	06:23
28-Apr	0	00:00	00:00	25	05:57	06:22
29-Apr	0	00:00	00:00	24	05:57	06:21
30-Apr	0	00:00	00:00	22	05:58	06:20
1-May	0	00:00	00:00	20	05:59	06:19
2-May	0	00:00	00:00	16	06:01	06:17
3-May	0	00:00	00:00	12	06:03	06:15

4-May	0	00:00	00:00	3	06:07	06:10
7-Aug	0	00:00	00:00	8	06:14	06:22
8-Aug	0	00:00	00:00	13	06:11	06:24
9-Aug	0	00:00	00:00	17	06:09	06:26
10-Aug	0	00:00	00:00	21	06:07	06:28
11-Aug	0	00:00	00:00	23	06:06	06:29
12-Aug	0	00:00	00:00	24	06:05	06:29
13-Aug	0	00:00	00:00	26	06:04	06:30
14-Aug	0	00:00	00:00	27	06:03	06:30
15-Aug	0	00:00	00:00	29	06:02	06:31
16-Aug	0	00:00	00:00	28	06:03	06:31
17-Aug	0	00:00	00:00	26	06:05	06:31
18-Aug	0	00:00	00:00	25	06:06	06:31
19-Aug	0	00:00	00:00	23	06:07	06:30
20-Aug	0	00:00	00:00	22	06:08	06:30
21-Aug	0	00:00	00:00	20	06:09	06:29
22-Aug	0	00:00	00:00	18	06:11	06:29
23-Aug	0	00:00	00:00	16	06:12	06:28
24-Aug	0	00:00	00:00	14	06:13	06:27
25-Aug	0	00:00	00:00	12	06:14	06:26
26-Aug	0	00:00	00:00	8	06:16	06:24
27-Aug	0	00:00	00:00	5	06:17	06:22
28-Aug	0	00:00	00:00	1	06:18	06:19
14-Nov	8	15:40	15:48	0	00:00	00:00
15-Nov	15	15:37	15:52	0	00:00	00:00
16-Nov	19	15:35	15:54	0	00:00	00:00
17-Nov	23	15:33	15:56	0	00:00	00:00
18-Nov	25	15:32	15:57	0	00:00	00:00
19-Nov	28	15:31	15:59	0	00:00	00:00
20-Nov	29	15:31	16:00	0	00:00	00:00
21-Nov	31	15:30	16:01	0	00:00	00:00
22-Nov	32	15:30	16:02	0	00:00	00:00
23-Nov	34	15:29	16:03	0	00:00	00:00
24-Nov	35	15:29	16:04	0	00:00	00:00
25-Nov	35	15:29	16:04	0	00:00	00:00
26-Nov	36	15:29	16:05	0	00:00	00:00
27-Nov	37	15:29	16:06	0	00:00	00:00
28-Nov	37	15:29	16:06	0	00:00	00:00
29-Nov	38	15:29	16:07	0	00:00	00:00
30-Nov	39	15:29	16:08	0	00:00	00:00
1-Dec	38	15:30	16:08	0	00:00	00:00
2-Dec	39	15:30	16:09	0	00:00	00:00
3-Dec	39	15:30	16:09	0	00:00	00:00
4-Dec	40	15:30	16:10	0	00:00	00:00
5-Dec	39	15:31	16:10	0	00:00	00:00
6-Dec	40	15:31	16:11	0	00:00	00:00
7-Dec	40	15:31	16:11	0	00:00	00:00
8-Dec	40	15:32	16:12	0	00:00	00:00
9-Dec	40	15:32	16:12	0	00:00	00:00
10-Dec	40	15:33	16:13	0	00:00	00:00
11-Dec	40	15:33	16:13	0	00:00	00:00
12-Dec	40	15:34	16:14	0	00:00	00:00
13-Dec	40	15:34	16:14	0	00:00	00:00
14-Dec	40	15:35	16:15	0	00:00	00:00
15-Dec	40	15:35	16:15	0	00:00	00:00
16-Dec	39	15:36	16:15	0	00:00	00:00
17-Dec	40	15:36	16:16	0	00:00	00:00
18-Dec	39	15:37	16:16	0	00:00	00:00
19-Dec	40	15:37	16:17	0	00:00	00:00
20-Dec	39	15:38	16:17	0	00:00	00:00
21-Dec	40	15:38	16:18	0	00:00	00:00
22-Dec	39	15:39	16:18	0	00:00	00:00
23-Dec	40	15:39	16:19	0	00:00	00:00
24-Dec	39	15:40	16:19	0	00:00	00:00
25-Dec	40	15:40	16:20	0	00:00	00:00
26-Dec	39	15:41	16:20	0	00:00	00:00
27-Dec	40	15:41	16:21	0	00:00	00:00

28-Dec	39	15:42	16:21	0	00:00	00:00
29-Dec	40	15:42	16:22	0	00:00	00:00
30-Dec	39	15:43	16:22	0	00:00	00:00
31-Dec	40	15:43	16:23	0	00:00	00:00

Receptor: 262

Calculation: Shadow Flicker

Rotor Orientation Type: SphereAroundRotorCentre

Timezone: CST (UTC-06:00) *Daylight savings time is not considered in the timestamps in this document

Summary of turbine results:

Turbine	Annual Hours (hh:mm)
64	11:40

Astronomical Worst Case (hours): 12

Reduction Factor: 0.25

Expected Case (hours): 3

Summary of results per day: *Days with no shadow flicker events have been excluded from the table below

Turbine 64

Day	Maximum Minutes	Start Time	End Time
24-Feb	3	07:50	07:53
25-Feb	7	07:48	07:55
26-Feb	10	07:47	07:57
27-Feb	13	07:45	07:58
28-Feb	16	07:43	07:59
29-Feb	18	07:41	07:59
1-Mar	21	07:39	08:00
2-Mar	23	07:37	08:00
3-Mar	25	07:35	08:00
4-Mar	26	07:34	08:00
5-Mar	27	07:32	07:59
6-Mar	29	07:30	07:59
7-Mar	27	07:31	07:58
8-Mar	26	07:31	07:57
9-Mar	24	07:32	07:56
10-Mar	21	07:33	07:54
11-Mar	18	07:34	07:52
12-Mar	12	07:37	07:49
29-Sep	11	07:18	07:29
30-Sep	17	07:15	07:32
1-Oct	20	07:13	07:33
2-Oct	23	07:11	07:34
3-Oct	25	07:10	07:35
4-Oct	26	07:09	07:35
5-Oct	28	07:08	07:36
6-Oct	29	07:07	07:36
7-Oct	27	07:09	07:36
8-Oct	25	07:10	07:35
9-Oct	23	07:12	07:35
10-Oct	22	07:13	07:35
11-Oct	20	07:14	07:34
12-Oct	17	07:16	07:33
13-Oct	15	07:17	07:32
14-Oct	12	07:19	07:31
15-Oct	9	07:20	07:29
16-Oct	6	07:21	07:27

Receptor: 351
 Calculation: Shadow Flicker
 Rotor Orientation Type: SphereAroundRotorCentre
 Timezone: CST (UTC-06:00) *Daylight savings time is not considered in the timestamps in this document

Summary of turbine results:

Turbine	Annual Hours (hh:mm)
5	5:10
88	9:04

Astronomical Worst Case (hours): 14
 Reduction Factor: 0.29
 Expected Case (hours): 4

Summary of results per day: *Days with no shadow flicker events have been excluded from the table below

Turbine 5 88

Day	Maximum			Maximum		
	Minutes	Start Time	End Time	Minutes	Start Time	End Time
9-Mar	3	18:12	18:15	0	00:00	00:00
10-Mar	7	18:10	18:17	0	00:00	00:00
11-Mar	9	18:09	18:18	0	00:00	00:00
12-Mar	11	18:08	18:19	0	00:00	00:00
13-Mar	14	18:07	18:21	0	00:00	00:00
14-Mar	15	18:07	18:22	0	00:00	00:00
15-Mar	18	18:06	18:24	0	00:00	00:00
16-Mar	19	18:06	18:25	0	00:00	00:00
17-Mar	18	18:07	18:25	0	00:00	00:00
18-Mar	17	18:07	18:24	0	00:00	00:00
19-Mar	13	18:09	18:22	0	00:00	00:00
20-Mar	9	18:11	18:20	0	00:00	00:00
26-Apr	0	00:00	00:00	5	19:14	19:19
27-Apr	0	00:00	00:00	7	19:13	19:20
28-Apr	0	00:00	00:00	9	19:12	19:21
29-Apr	0	00:00	00:00	11	19:11	19:22
30-Apr	0	00:00	00:00	14	19:10	19:24
1-May	0	00:00	00:00	16	19:09	19:25
2-May	0	00:00	00:00	17	19:09	19:26
3-May	0	00:00	00:00	18	19:09	19:27
4-May	0	00:00	00:00	20	19:09	19:29
5-May	0	00:00	00:00	21	19:09	19:30
6-May	0	00:00	00:00	22	19:09	19:31
7-May	0	00:00	00:00	21	19:09	19:30
8-May	0	00:00	00:00	20	19:10	19:30
9-May	0	00:00	00:00	19	19:10	19:29
10-May	0	00:00	00:00	17	19:11	19:28
11-May	0	00:00	00:00	15	19:12	19:27
12-May	0	00:00	00:00	11	19:14	19:25
13-May	0	00:00	00:00	7	19:16	19:23
27-Jul	0	00:00	00:00	4	19:28	19:32
28-Jul	0	00:00	00:00	10	19:25	19:35
29-Jul	0	00:00	00:00	13	19:23	19:36
30-Jul	0	00:00	00:00	16	19:22	19:38
31-Jul	0	00:00	00:00	17	19:21	19:38
1-Aug	0	00:00	00:00	19	19:20	19:39
2-Aug	0	00:00	00:00	21	19:19	19:40
3-Aug	0	00:00	00:00	21	19:19	19:40
4-Aug	0	00:00	00:00	22	19:18	19:40
5-Aug	0	00:00	00:00	20	19:18	19:38
6-Aug	0	00:00	00:00	19	19:18	19:37
7-Aug	0	00:00	00:00	18	19:18	19:36
8-Aug	0	00:00	00:00	16	19:18	19:34
9-Aug	0	00:00	00:00	15	19:18	19:33
10-Aug	0	00:00	00:00	13	19:18	19:31
11-Aug	0	00:00	00:00	11	19:19	19:30
12-Aug	0	00:00	00:00	9	19:19	19:28
13-Aug	0	00:00	00:00	7	19:20	19:27
14-Aug	0	00:00	00:00	3	19:22	19:25

20-Sep	6	17:58	18:04	0	00:00	00:00
21-Sep	13	17:54	18:07	0	00:00	00:00
22-Sep	16	17:52	18:08	0	00:00	00:00
23-Sep	18	17:51	18:09	0	00:00	00:00
24-Sep	19	17:50	18:09	0	00:00	00:00
25-Sep	18	17:49	18:07	0	00:00	00:00
26-Sep	16	17:49	18:05	0	00:00	00:00
27-Sep	15	17:48	18:03	0	00:00	00:00
28-Sep	13	17:48	18:01	0	00:00	00:00
29-Sep	10	17:49	17:59	0	00:00	00:00
30-Sep	8	17:49	17:57	0	00:00	00:00
1-Oct	5	17:50	17:55	0	00:00	00:00
2-Oct	1	17:52	17:53	0	00:00	00:00

Receptor: 356
 Calculation: Shadow Flicker
 Rotor Orientation Type: SphereAroundRotorCentre
 Timezone: CST (UTC-06:00) *Daylight savings time is not considered in the timestamps in this document

Summary of turbine results:

Turbine	Annual Hours (hh:mm)
18	9:24
28	11:40
37	4:37
38	6:00

Astronomical Worst Case (hours): 32
 Reduction Factor: 0.25
 Expected Case (hours): 8

Summary of results per day: *Days with no shadow flicker events have been excluded from the table below

Turbine	18	28	37	38								
Day	Maximum Minutes	Start Time	End Time	Maximum Minutes	Start Time	End Time	Maximum Minutes	Start Time	End Time	Maximum Minutes	Start Time	End Time
31-Jan	0	00:00	00:00	4	17:13	17:17	0	00:00	00:00	0	00:00	00:00
1-Feb	0	00:00	00:00	7	17:11	17:18	0	00:00	00:00	0	00:00	00:00
2-Feb	0	00:00	00:00	10	17:10	17:20	0	00:00	00:00	0	00:00	00:00
3-Feb	0	00:00	00:00	13	17:09	17:22	0	00:00	00:00	0	00:00	00:00
4-Feb	0	00:00	00:00	15	17:08	17:23	0	00:00	00:00	0	00:00	00:00
5-Feb	0	00:00	00:00	17	17:08	17:25	0	00:00	00:00	0	00:00	00:00
6-Feb	0	00:00	00:00	19	17:07	17:26	0	00:00	00:00	0	00:00	00:00
7-Feb	0	00:00	00:00	21	17:07	17:28	0	00:00	00:00	0	00:00	00:00
8-Feb	0	00:00	00:00	23	17:07	17:30	0	00:00	00:00	0	00:00	00:00
9-Feb	0	00:00	00:00	24	17:07	17:31	0	00:00	00:00	0	00:00	00:00
10-Feb	0	00:00	00:00	26	17:07	17:33	0	00:00	00:00	0	00:00	00:00
11-Feb	0	00:00	00:00	26	17:07	17:33	0	00:00	00:00	0	00:00	00:00
12-Feb	0	00:00	00:00	26	17:07	17:33	0	00:00	00:00	0	00:00	00:00
13-Feb	0	00:00	00:00	24	17:08	17:32	0	00:00	00:00	0	00:00	00:00
14-Feb	0	00:00	00:00	24	17:08	17:32	0	00:00	00:00	0	00:00	00:00
15-Feb	0	00:00	00:00	22	17:09	17:31	0	00:00	00:00	0	00:00	00:00
16-Feb	0	00:00	00:00	20	17:10	17:30	0	00:00	00:00	0	00:00	00:00
17-Feb	0	00:00	00:00	16	17:12	17:28	0	00:00	00:00	0	00:00	00:00
18-Feb	0	00:00	00:00	11	17:14	17:25	0	00:00	00:00	0	00:00	00:00
6-Mar	0	00:00	00:00	0	00:00	00:00	2	07:30	07:32	0	00:00	00:00
7-Mar	0	00:00	00:00	0	00:00	00:00	5	07:28	07:33	0	00:00	00:00
8-Mar	0	00:00	00:00	0	00:00	00:00	7	07:26	07:33	0	00:00	00:00
9-Mar	0	00:00	00:00	0	00:00	00:00	10	07:24	07:34	0	00:00	00:00
10-Mar	0	00:00	00:00	0	00:00	00:00	12	07:22	07:34	0	00:00	00:00
11-Mar	0	00:00	00:00	0	00:00	00:00	13	07:20	07:33	0	00:00	00:00
12-Mar	0	00:00	00:00	0	00:00	00:00	15	07:18	07:33	0	00:00	00:00
13-Mar	0	00:00	00:00	0	00:00	00:00	16	07:16	07:32	0	00:00	00:00
14-Mar	0	00:00	00:00	0	00:00	00:00	17	07:14	07:31	0	00:00	00:00
15-Mar	0	00:00	00:00	0	00:00	00:00	17	07:13	07:30	0	00:00	00:00
16-Mar	0	00:00	00:00	0	00:00	00:00	14	07:14	07:28	0	00:00	00:00
17-Mar	0	00:00	00:00	0	00:00	00:00	10	07:16	07:26	0	00:00	00:00
9-Apr	0	00:00	00:00	0	00:00	00:00	0	00:00	00:00	2	06:24	06:26
10-Apr	0	00:00	00:00	0	00:00	00:00	0	00:00	00:00	5	06:23	06:28
11-Apr	0	00:00	00:00	0	00:00	00:00	0	00:00	00:00	7	06:21	06:28
12-Apr	0	00:00	00:00	0	00:00	00:00	0	00:00	00:00	10	06:19	06:29
13-Apr	0	00:00	00:00	0	00:00	00:00	0	00:00	00:00	12	06:17	06:29
14-Apr	0	00:00	00:00	0	00:00	00:00	0	00:00	00:00	14	06:15	06:29
15-Apr	0	00:00	00:00	0	00:00	00:00	0	00:00	00:00	15	06:14	06:29
16-Apr	0	00:00	00:00	0	00:00	00:00	0	00:00	00:00	17	06:12	06:29
17-Apr	0	00:00	00:00	0	00:00	00:00	0	00:00	00:00	18	06:10	06:28
18-Apr	0	00:00	00:00	0	00:00	00:00	0	00:00	00:00	19	06:08	06:27
19-Apr	0	00:00	00:00	0	00:00	00:00	0	00:00	00:00	18	06:08	06:26
20-Apr	0	00:00	00:00	0	00:00	00:00	0	00:00	00:00	17	06:08	06:25
21-Apr	0	00:00	00:00	0	00:00	00:00	0	00:00	00:00	14	06:10	06:24

22-Apr	2	19:12	19:14	0	00:00	00:00	0	00:00	00:00	9	06:12	06:21
23-Apr	6	19:09	19:15	0	00:00	00:00	0	00:00	00:00	0	00:00	00:00
24-Apr	8	19:08	19:16	0	00:00	00:00	0	00:00	00:00	0	00:00	00:00
25-Apr	11	19:06	19:17	0	00:00	00:00	0	00:00	00:00	0	00:00	00:00
26-Apr	13	19:06	19:19	0	00:00	00:00	0	00:00	00:00	0	00:00	00:00
27-Apr	15	19:05	19:20	0	00:00	00:00	0	00:00	00:00	0	00:00	00:00
28-Apr	17	19:04	19:21	0	00:00	00:00	0	00:00	00:00	0	00:00	00:00
29-Apr	18	19:04	19:22	0	00:00	00:00	0	00:00	00:00	0	00:00	00:00
30-Apr	20	19:04	19:24	0	00:00	00:00	0	00:00	00:00	0	00:00	00:00
1-May	21	19:04	19:25	0	00:00	00:00	0	00:00	00:00	0	00:00	00:00
2-May	22	19:04	19:26	0	00:00	00:00	0	00:00	00:00	0	00:00	00:00
3-May	22	19:04	19:26	0	00:00	00:00	0	00:00	00:00	0	00:00	00:00
4-May	22	19:04	19:26	0	00:00	00:00	0	00:00	00:00	0	00:00	00:00
5-May	20	19:05	19:25	0	00:00	00:00	0	00:00	00:00	0	00:00	00:00
6-May	18	19:06	19:24	0	00:00	00:00	0	00:00	00:00	0	00:00	00:00

7-May	16	19:07	19:23	0	00:00	00:00	0	00:00	00:00	0	00:00	00:00
8-May	14	19:08	19:22	0	00:00	00:00	0	00:00	00:00	0	00:00	00:00
9-May	11	19:09	19:20	0	00:00	00:00	0	00:00	00:00	0	00:00	00:00
10-May	5	19:12	19:17	0	00:00	00:00	0	00:00	00:00	0	00:00	00:00
31-Jul	8	19:21	19:29	0	00:00	00:00	0	00:00	00:00	0	00:00	00:00
1-Aug	13	19:18	19:31	0	00:00	00:00	0	00:00	00:00	0	00:00	00:00
2-Aug	15	19:17	19:32	0	00:00	00:00	0	00:00	00:00	0	00:00	00:00
3-Aug	17	19:16	19:33	0	00:00	00:00	0	00:00	00:00	0	00:00	00:00
4-Aug	19	19:15	19:34	0	00:00	00:00	0	00:00	00:00	0	00:00	00:00
5-Aug	21	19:14	19:35	0	00:00	00:00	0	00:00	00:00	0	00:00	00:00
6-Aug	22	19:13	19:35	0	00:00	00:00	0	00:00	00:00	0	00:00	00:00
7-Aug	22	19:13	19:35	0	00:00	00:00	0	00:00	00:00	0	00:00	00:00
8-Aug	22	19:12	19:34	0	00:00	00:00	0	00:00	00:00	0	00:00	00:00
9-Aug	21	19:12	19:33	0	00:00	00:00	0	00:00	00:00	0	00:00	00:00
10-Aug	19	19:12	19:31	0	00:00	00:00	0	00:00	00:00	0	00:00	00:00
11-Aug	18	19:12	19:30	0	00:00	00:00	0	00:00	00:00	0	00:00	00:00
12-Aug	16	19:12	19:28	0	00:00	00:00	0	00:00	00:00	0	00:00	00:00
13-Aug	15	19:12	19:27	0	00:00	00:00	0	00:00	00:00	0	00:00	00:00
14-Aug	12	19:13	19:25	0	00:00	00:00	0	00:00	00:00	0	00:00	00:00
15-Aug	10	19:13	19:23	0	00:00	00:00	0	00:00	00:00	0	00:00	00:00
16-Aug	8	19:14	19:22	0	00:00	00:00	0	00:00	00:00	0	00:00	00:00
17-Aug	5	19:15	19:20	0	00:00	00:00	0	00:00	00:00	0	00:00	00:00
18-Aug	0	00:00	00:00	0	00:00	00:00	0	00:00	00:00	2	06:21	06:23
19-Aug	0	00:00	00:00	0	00:00	00:00	0	00:00	00:00	11	06:16	06:27
20-Aug	0	00:00	00:00	0	00:00	00:00	0	00:00	00:00	15	06:14	06:29
21-Aug	0	00:00	00:00	0	00:00	00:00	0	00:00	00:00	18	06:12	06:30
22-Aug	0	00:00	00:00	0	00:00	00:00	0	00:00	00:00	19	06:11	06:30
23-Aug	0	00:00	00:00	0	00:00	00:00	0	00:00	00:00	19	06:12	06:31
24-Aug	0	00:00	00:00	0	00:00	00:00	0	00:00	00:00	18	06:13	06:31
25-Aug	0	00:00	00:00	0	00:00	00:00	0	00:00	00:00	17	06:14	06:31
26-Aug	0	00:00	00:00	0	00:00	00:00	0	00:00	00:00	15	06:16	06:31
27-Aug	0	00:00	00:00	0	00:00	00:00	0	00:00	00:00	13	06:17	06:30
28-Aug	0	00:00	00:00	0	00:00	00:00	0	00:00	00:00	12	06:18	06:30
29-Aug	0	00:00	00:00	0	00:00	00:00	0	00:00	00:00	10	06:19	06:29
30-Aug	0	00:00	00:00	0	00:00	00:00	0	00:00	00:00	8	06:20	06:28
31-Aug	0	00:00	00:00	0	00:00	00:00	0	00:00	00:00	4	06:22	06:26
1-Sep	0	00:00	00:00	0	00:00	00:00	0	00:00	00:00	2	06:23	06:25
24-Sep	0	00:00	00:00	0	00:00	00:00	7	07:01	07:08	0	00:00	00:00
25-Sep	0	00:00	00:00	0	00:00	00:00	13	06:58	07:11	0	00:00	00:00
26-Sep	0	00:00	00:00	0	00:00	00:00	16	06:56	07:12	0	00:00	00:00
27-Sep	0	00:00	00:00	0	00:00	00:00	18	06:55	07:13	0	00:00	00:00
28-Sep	0	00:00	00:00	0	00:00	00:00	16	06:57	07:13	0	00:00	00:00
29-Sep	0	00:00	00:00	0	00:00	00:00	15	06:58	07:13	0	00:00	00:00
30-Sep	0	00:00	00:00	0	00:00	00:00	14	06:59	07:13	0	00:00	00:00
1-Oct	0	00:00	00:00	0	00:00	00:00	12	07:01	07:13	0	00:00	00:00
2-Oct	0	00:00	00:00	0	00:00	00:00	11	07:02	07:13	0	00:00	00:00
3-Oct	0	00:00	00:00	0	00:00	00:00	9	07:03	07:12	0	00:00	00:00
4-Oct	0	00:00	00:00	0	00:00	00:00	6	07:05	07:11	0	00:00	00:00
5-Oct	0	00:00	00:00	0	00:00	00:00	3	07:06	07:09	0	00:00	00:00
22-Oct	0	00:00	00:00	12	16:44	16:56	0	00:00	00:00	0	00:00	00:00
23-Oct	0	00:00	00:00	16	16:42	16:58	0	00:00	00:00	0	00:00	00:00
24-Oct	0	00:00	00:00	20	16:40	17:00	0	00:00	00:00	0	00:00	00:00
25-Oct	0	00:00	00:00	22	16:39	17:01	0	00:00	00:00	0	00:00	00:00
26-Oct	0	00:00	00:00	24	16:38	17:02	0	00:00	00:00	0	00:00	00:00
27-Oct	0	00:00	00:00	25	16:37	17:02	0	00:00	00:00	0	00:00	00:00
28-Oct	0	00:00	00:00	26	16:37	17:03	0	00:00	00:00	0	00:00	00:00
29-Oct	0	00:00	00:00	27	16:36	17:03	0	00:00	00:00	0	00:00	00:00
30-Oct	0	00:00	00:00	26	16:36	17:02	0	00:00	00:00	0	00:00	00:00
31-Oct	0	00:00	00:00	25	16:36	17:01	0	00:00	00:00	0	00:00	00:00
1-Nov	0	00:00	00:00	23	16:36	16:59	0	00:00	00:00	0	00:00	00:00
2-Nov	0	00:00	00:00	20	16:37	16:57	0	00:00	00:00	0	00:00	00:00
3-Nov	0	00:00	00:00	19	16:37	16:56	0	00:00	00:00	0	00:00	00:00
4-Nov	0	00:00	00:00	17	16:37	16:54	0	00:00	00:00	0	00:00	00:00
5-Nov	0	00:00	00:00	15	16:38	16:53	0	00:00	00:00	0	00:00	00:00

6-Nov	0	00:00	00:00	13	16:39	16:52	0	00:00	00:00	0	00:00	00:00
7-Nov	0	00:00	00:00	10	16:40	16:50	0	00:00	00:00	0	00:00	00:00
8-Nov	0	00:00	00:00	8	16:41	16:49	0	00:00	00:00	0	00:00	00:00
9-Nov	0	00:00	00:00	4	16:43	16:47	0	00:00	00:00	0	00:00	00:00

Receptor: 357

Calculation:

Shadow Flicker

Rotor Orientation Type:

SphereAroundRotorCentre

Timezone:

CST (UTC-06:00)

*Daylight savings time is not considered in the timestamps in this document

Summary of turbine results:

Turbine	Annual Hours (hh:mm)
18	8:25
28	10:45
37	5:00
38	6:25
39	7:37

Astronomical Worst Case (hours):

38

Reduction Factor:

0.24

Expected Case (hours):

9

Summary of results per day:

*Days with no shadow flicker events have been excluded from the table below

Turbine	18	28	37	38	39										
Day	Maximum Minutes	Start Time	End Time	Maximum Minutes	Start Time	End Time	Maximum Minutes	Start Time	End Time	Maximum Minutes	Start Time	End Time	Maximum Minutes	Start Time	End Time
28-Jan	0	00:00	00:00	2	17:10	17:12	0	00:00	00:00	0	00:00	00:00	0	00:00	00:00
29-Jan	0	00:00	00:00	6	17:08	17:14	0	00:00	00:00	0	00:00	00:00	0	00:00	00:00
30-Jan	0	00:00	00:00	8	17:07	17:15	0	00:00	00:00	0	00:00	00:00	0	00:00	00:00
31-Jan	0	00:00	00:00	11	17:06	17:17	0	00:00	00:00	0	00:00	00:00	0	00:00	00:00
1-Feb	0	00:00	00:00	13	17:05	17:18	0	00:00	00:00	0	00:00	00:00	0	00:00	00:00
2-Feb	0	00:00	00:00	15	17:05	17:20	0	00:00	00:00	0	00:00	00:00	0	00:00	00:00
3-Feb	0	00:00	00:00	18	17:04	17:22	0	00:00	00:00	0	00:00	00:00	0	00:00	00:00
4-Feb	0	00:00	00:00	19	17:04	17:23	0	00:00	00:00	0	00:00	00:00	0	00:00	00:00
5-Feb	0	00:00	00:00	21	17:04	17:25	0	00:00	00:00	0	00:00	00:00	0	00:00	00:00
6-Feb	0	00:00	00:00	22	17:04	17:26	0	00:00	00:00	0	00:00	00:00	0	00:00	00:00
7-Feb	0	00:00	00:00	24	17:04	17:28	0	00:00	00:00	0	00:00	00:00	0	00:00	00:00
8-Feb	0	00:00	00:00	25	17:04	17:29	0	00:00	00:00	0	00:00	00:00	0	00:00	00:00
9-Feb	0	00:00	00:00	25	17:04	17:29	0	00:00	00:00	0	00:00	00:00	0	00:00	00:00
10-Feb	0	00:00	00:00	24	17:05	17:29	0	00:00	00:00	0	00:00	00:00	0	00:00	00:00
11-Feb	0	00:00	00:00	22	17:06	17:28	0	00:00	00:00	0	00:00	00:00	0	00:00	00:00
12-Feb	0	00:00	00:00	21	17:06	17:27	0	00:00	00:00	0	00:00	00:00	0	00:00	00:00
13-Feb	0	00:00	00:00	19	17:07	17:26	0	00:00	00:00	0	00:00	00:00	0	00:00	00:00
14-Feb	0	00:00	00:00	16	17:09	17:25	0	00:00	00:00	0	00:00	00:00	0	00:00	00:00
15-Feb	0	00:00	00:00	11	17:11	17:22	0	00:00	00:00	0	00:00	00:00	0	00:00	00:00
2-Mar	0	00:00	00:00	0	00:00	00:00	2	07:37	07:39	0	00:00	00:00	0	00:00	00:00
3-Mar	0	00:00	00:00	0	00:00	00:00	5	07:35	07:40	0	00:00	00:00	0	00:00	00:00
4-Mar	0	00:00	00:00	0	00:00	00:00	7	07:34	07:41	0	00:00	00:00	0	00:00	00:00
5-Mar	0	00:00	00:00	0	00:00	00:00	9	07:32	07:41	0	00:00	00:00	0	00:00	00:00
6-Mar	0	00:00	00:00	0	00:00	00:00	11	07:30	07:41	0	00:00	00:00	0	00:00	00:00
7-Mar	0	00:00	00:00	0	00:00	00:00	13	07:28	07:41	0	00:00	00:00	0	00:00	00:00
8-Mar	0	00:00	00:00	0	00:00	00:00	15	07:26	07:41	0	00:00	00:00	0	00:00	00:00
9-Mar	0	00:00	00:00	0	00:00	00:00	16	07:24	07:40	0	00:00	00:00	0	00:00	00:00
10-Mar	0	00:00	00:00	0	00:00	00:00	18	07:22	07:40	0	00:00	00:00	0	00:00	00:00
11-Mar	0	00:00	00:00	0	00:00	00:00	19	07:20	07:39	0	00:00	00:00	0	00:00	00:00
12-Mar	0	00:00	00:00	0	00:00	00:00	16	07:21	07:37	0	00:00	00:00	0	00:00	00:00
13-Mar	0	00:00	00:00	0	00:00	00:00	13	07:22	07:35	0	00:00	00:00	0	00:00	00:00
14-Mar	0	00:00	00:00	0	00:00	00:00	7	07:25	07:32	0	00:00	00:00	0	00:00	00:00
6-Apr	0	00:00	00:00	0	00:00	00:00	0	00:00	00:00	2	06:30	06:32	0	00:00	00:00
7-Apr	0	00:00	00:00	0	00:00	00:00	0	00:00	00:00	6	06:28	06:34	0	00:00	00:00
8-Apr	0	00:00	00:00	0	00:00	00:00	0	00:00	00:00	9	06:26	06:35	0	00:00	00:00
9-Apr	0	00:00	00:00	0	00:00	00:00	0	00:00	00:00	11	06:24	06:35	0	00:00	00:00
10-Apr	0	00:00	00:00	0	00:00	00:00	0	00:00	00:00	12	06:23	06:35	0	00:00	00:00
11-Apr	0	00:00	00:00	0	00:00	00:00	0	00:00	00:00	14	06:21	06:35	0	00:00	00:00
12-Apr	0	00:00	00:00	0	00:00	00:00	0	00:00	00:00	16	06:19	06:35	0	00:00	00:00
13-Apr	0	00:00	00:00	0	00:00	00:00	0	00:00	00:00	18	06:17	06:35	0	00:00	00:00
14-Apr	0	00:00	00:00	0	00:00	00:00	0	00:00	00:00	19	06:15	06:34	0	00:00	00:00
15-Apr	0	00:00	00:00	0	00:00	00:00	0	00:00	00:00	20	06:14	06:34	0	00:00	00:00
16-Apr	0	00:00	00:00	0	00:00	00:00	0	00:00	00:00	20	06:13	06:33	0	00:00	00:00
17-Apr	0	00:00	00:00	0	00:00	00:00	0	00:00	00:00	18	06:14	06:32	0	00:00	00:00
18-Apr	4	19:04	19:08	0	00:00	00:00	0	00:00	00:00	15	06:15	06:30	0	00:00	00:00
19-Apr	8	19:02	19:10	0	00:00	00:00	0	00:00	00:00	11	06:17	06:28	0	00:00	00:00
20-Apr	10	19:01	19:11	0	00:00	00:00	0	00:00	00:00	0	00:00	00:00	0	00:00	00:00
21-Apr	12	19:00	19:12	0	00:00	00:00	0	00:00	00:00	0	00:00	00:00	0	00:00	00:00
22-Apr	15	18:59	19:14	0	00:00	00:00	0	00:00	00:00	0	00:00	00:00	0	00:00	00:00
23-Apr	17	18:58	19:15	0	00:00	00:00	0	00:00	00:00	0	00:00	00:00	0	00:00	00:00
24-Apr	18	18:58	19:16	0	00:00	00:00	0	00:00	00:00	0	00:00	00:00	0	00:00	00:00
25-Apr	19	18:58	19:17	0	00:00	00:00	0	00:00	00:00	0	00:00	00:00	0	00:00	00:00
26-Apr	21	18:58	19:19	0	00:00	00:00	0	00:00	00:00	0	00:00	00:00	0	00:00	00:00
27-Apr	22	18:58	19:20	0	00:00	00:00	0	00:00	00:00	0	00:00	00:00	0	00:00	00:00
28-Apr	22	18:58	19:20	0	00:00	00:00	0	00:00	00:00	0	00:00	00:00	0	00:00	00:00
29-Apr	20	18:59	19:19	0	00:00	00:00	0	00:00	00:00	0	00:00	00:00	0	00:00	00:00
30-Apr	19	18:59	19:18	0	00:00	00:00	0	00:00	00:00	0	00:00	00:00	0	00:00	00:00

29-Sep	0	00:00	00:00	0	00:00	00:00	15	07:02	07:17	0	00:00	00:00	0	00:00	00:00
30-Sep	0	00:00	00:00	0	00:00	00:00	18	07:00	07:18	0	00:00	00:00	0	00:00	00:00
1-Oct	0	00:00	00:00	0	00:00	00:00	18	07:01	07:19	0	00:00	00:00	0	00:00	00:00
2-Oct	0	00:00	00:00	0	00:00	00:00	17	07:02	07:19	0	00:00	00:00	0	00:00	00:00
3-Oct	0	00:00	00:00	0	00:00	00:00	16	07:03	07:19	0	00:00	00:00	0	00:00	00:00
4-Oct	0	00:00	00:00	0	00:00	00:00	14	07:05	07:19	0	00:00	00:00	0	00:00	00:00
5-Oct	0	00:00	00:00	0	00:00	00:00	12	07:06	07:18	0	00:00	00:00	0	00:00	00:00
6-Oct	0	00:00	00:00	0	00:00	00:00	11	07:07	07:18	0	00:00	00:00	0	00:00	00:00
7-Oct	0	00:00	00:00	0	00:00	00:00	8	07:09	07:17	0	00:00	00:00	0	00:00	00:00
8-Oct	0	00:00	00:00	0	00:00	00:00	6	07:10	07:16	0	00:00	00:00	0	00:00	00:00
9-Oct	0	00:00	00:00	0	00:00	00:00	2	07:12	07:14	0	00:00	00:00	0	00:00	00:00
25-Oct	0	00:00	00:00	11	16:41	16:52	0	00:00	00:00	0	00:00	00:00	0	00:00	00:00
26-Oct	0	00:00	00:00	15	16:39	16:54	0	00:00	00:00	0	00:00	00:00	0	00:00	00:00
27-Oct	0	00:00	00:00	19	16:37	16:56	0	00:00	00:00	0	00:00	00:00	0	00:00	00:00
28-Oct	0	00:00	00:00	21	16:36	16:57	0	00:00	00:00	0	00:00	00:00	0	00:00	00:00
29-Oct	0	00:00	00:00	23	16:35	16:58	0	00:00	00:00	0	00:00	00:00	0	00:00	00:00
30-Oct	0	00:00	00:00	24	16:34	16:58	0	00:00	00:00	0	00:00	00:00	0	00:00	00:00
31-Oct	0	00:00	00:00	25	16:34	16:59	0	00:00	00:00	0	00:00	00:00	0	00:00	00:00
1-Nov	0	00:00	00:00	25	16:34	16:59	0	00:00	00:00	0	00:00	00:00	0	00:00	00:00
2-Nov	0	00:00	00:00	24	16:33	16:57	0	00:00	00:00	0	00:00	00:00	0	00:00	00:00
3-Nov	0	00:00	00:00	23	16:33	16:56	0	00:00	00:00	0	00:00	00:00	0	00:00	00:00
4-Nov	0	00:00	00:00	20	16:34	16:54	0	00:00	00:00	0	00:00	00:00	0	00:00	00:00
5-Nov	0	00:00	00:00	19	16:34	16:53	0	00:00	00:00	0	00:00	00:00	0	00:00	00:00
6-Nov	0	00:00	00:00	18	16:34	16:52	0	00:00	00:00	0	00:00	00:00	0	00:00	00:00
7-Nov	0	00:00	00:00	15	16:35	16:50	0	00:00	00:00	0	00:00	00:00	0	00:00	00:00
8-Nov	0	00:00	00:00	13	16:36	16:49	0	00:00	00:00	0	00:00	00:00	0	00:00	00:00
9-Nov	0	00:00	00:00	11	16:36	16:47	0	00:00	00:00	0	00:00	00:00	0	00:00	00:00
10-Nov	0	00:00	00:00	8	16:38	16:46	0	00:00	00:00	0	00:00	00:00	0	00:00	00:00
11-Nov	0	00:00	00:00	6	16:39	16:45	0	00:00	00:00	0	00:00	00:00	0	00:00	00:00
12-Nov	0	00:00	00:00	3	16:41	16:44	0	00:00	00:00	0	00:00	00:00	0	00:00	00:00

Receptor: 367

Calculation: Shadow Flicker

Rotor Orientation Type: SphereAroundRotorCentre

Timezone: CST (UTC-06:00) *Daylight savings time is not considered in the timestamps in this document

Summary of turbine results:

Turbine	Annual Hours (hh:mm)
37	19:36
38	14:22
39	13:16

Astronomical Worst Case (hours): 47

Reduction Factor: 0.26

Expected Case (hours): 12

Summary of results per day: *Days with no shadow flicker events have been excluded from the table below

Turbine	37			38			39		
Day	Maximum Minutes	Start Time	End Time	Maximum Minutes	Start Time	End Time	Maximum Minutes	Start Time	End Time
1-Jan	12	08:49	09:01	0	00:00	00:00	0	00:00	00:00
2-Jan	12	08:49	09:01	0	00:00	00:00	0	00:00	00:00
3-Jan	13	08:49	09:02	0	00:00	00:00	0	00:00	00:00
4-Jan	14	08:49	09:03	0	00:00	00:00	0	00:00	00:00
5-Jan	14	08:49	09:03	0	00:00	00:00	0	00:00	00:00
6-Jan	15	08:49	09:04	0	00:00	00:00	0	00:00	00:00
7-Jan	17	08:48	09:05	0	00:00	00:00	0	00:00	00:00
8-Jan	17	08:48	09:05	0	00:00	00:00	0	00:00	00:00
9-Jan	18	08:48	09:06	0	00:00	00:00	0	00:00	00:00
10-Jan	19	08:47	09:06	0	00:00	00:00	0	00:00	00:00
11-Jan	20	08:47	09:07	0	00:00	00:00	0	00:00	00:00
12-Jan	21	08:46	09:07	0	00:00	00:00	0	00:00	00:00
13-Jan	22	08:46	09:08	0	00:00	00:00	0	00:00	00:00
14-Jan	23	08:45	09:08	0	00:00	00:00	0	00:00	00:00
15-Jan	24	08:44	09:08	0	00:00	00:00	0	00:00	00:00
16-Jan	24	08:44	09:08	0	00:00	00:00	0	00:00	00:00
17-Jan	26	08:43	09:09	0	00:00	00:00	0	00:00	00:00
18-Jan	25	08:44	09:09	0	00:00	00:00	0	00:00	00:00
19-Jan	25	08:44	09:09	0	00:00	00:00	0	00:00	00:00
20-Jan	23	08:45	09:08	0	00:00	00:00	0	00:00	00:00
21-Jan	22	08:46	09:08	0	00:00	00:00	0	00:00	00:00
22-Jan	21	08:47	09:08	0	00:00	00:00	0	00:00	00:00
23-Jan	19	08:48	09:07	0	00:00	00:00	0	00:00	00:00
24-Jan	17	08:49	09:06	0	00:00	00:00	0	00:00	00:00
25-Jan	14	08:51	09:05	0	00:00	00:00	0	00:00	00:00
26-Jan	11	08:53	09:04	0	00:00	00:00	0	00:00	00:00
27-Jan	1	08:58	08:59	0	00:00	00:00	0	00:00	00:00
20-Feb	0	00:00	00:00	5	07:57	08:02	0	00:00	00:00
21-Feb	0	00:00	00:00	9	07:56	08:05	0	00:00	00:00
22-Feb	0	00:00	00:00	13	07:54	08:07	0	00:00	00:00
23-Feb	0	00:00	00:00	16	07:52	08:08	0	00:00	00:00
24-Feb	0	00:00	00:00	19	07:50	08:09	0	00:00	00:00
25-Feb	0	00:00	00:00	22	07:48	08:10	0	00:00	00:00
26-Feb	0	00:00	00:00	23	07:47	08:10	0	00:00	00:00
27-Feb	0	00:00	00:00	25	07:45	08:10	0	00:00	00:00
28-Feb	0	00:00	00:00	28	07:43	08:11	0	00:00	00:00
29-Feb	0	00:00	00:00	30	07:41	08:11	0	00:00	00:00
1-Mar	0	00:00	00:00	30	07:40	08:10	0	00:00	00:00
2-Mar	0	00:00	00:00	30	07:40	08:10	0	00:00	00:00
3-Mar	0	00:00	00:00	30	07:40	08:10	0	00:00	00:00
4-Mar	0	00:00	00:00	29	07:40	08:09	0	00:00	00:00
5-Mar	0	00:00	00:00	27	07:41	08:08	0	00:00	00:00
6-Mar	0	00:00	00:00	26	07:41	08:07	0	00:00	00:00
7-Mar	0	00:00	00:00	23	07:42	08:05	0	00:00	00:00
8-Mar	0	00:00	00:00	20	07:44	08:04	0	00:00	00:00
9-Mar	0	00:00	00:00	16	07:45	08:01	0	00:00	00:00
10-Mar	0	00:00	00:00	8	07:49	07:57	0	00:00	00:00
7-Apr	0	00:00	00:00	0	00:00	00:00	1	06:28	06:29
8-Apr	0	00:00	00:00	0	00:00	00:00	7	06:26	06:33

9-Apr	0	00:00	00:00	0	00:00	00:00	10	06:24	06:34
10-Apr	0	00:00	00:00	0	00:00	00:00	13	06:23	06:36
11-Apr	0	00:00	00:00	0	00:00	00:00	16	06:21	06:37
12-Apr	0	00:00	00:00	0	00:00	00:00	18	06:19	06:37
13-Apr	0	00:00	00:00	0	00:00	00:00	21	06:17	06:38
14-Apr	0	00:00	00:00	0	00:00	00:00	23	06:15	06:38
15-Apr	0	00:00	00:00	0	00:00	00:00	24	06:14	06:38
16-Apr	0	00:00	00:00	0	00:00	00:00	26	06:12	06:38
17-Apr	0	00:00	00:00	0	00:00	00:00	27	06:10	06:37
18-Apr	0	00:00	00:00	0	00:00	00:00	28	06:09	06:37
19-Apr	0	00:00	00:00	0	00:00	00:00	28	06:09	06:37
20-Apr	0	00:00	00:00	0	00:00	00:00	27	06:09	06:36
21-Apr	0	00:00	00:00	0	00:00	00:00	26	06:09	06:35
22-Apr	0	00:00	00:00	0	00:00	00:00	24	06:10	06:34
23-Apr	0	00:00	00:00	0	00:00	00:00	22	06:11	06:33
24-Apr	0	00:00	00:00	0	00:00	00:00	20	06:12	06:32
25-Apr	0	00:00	00:00	0	00:00	00:00	17	06:13	06:30
26-Apr	0	00:00	00:00	0	00:00	00:00	13	06:15	06:28
27-Apr	0	00:00	00:00	0	00:00	00:00	4	06:19	06:23
14-Aug	0	00:00	00:00	0	00:00	00:00	7	06:25	06:32
15-Aug	0	00:00	00:00	0	00:00	00:00	14	06:21	06:35
16-Aug	0	00:00	00:00	0	00:00	00:00	18	06:19	06:37
17-Aug	0	00:00	00:00	0	00:00	00:00	21	06:17	06:38
18-Aug	0	00:00	00:00	0	00:00	00:00	23	06:16	06:39
19-Aug	0	00:00	00:00	0	00:00	00:00	25	06:15	06:40
20-Aug	0	00:00	00:00	0	00:00	00:00	26	06:14	06:40
21-Aug	0	00:00	00:00	0	00:00	00:00	27	06:13	06:40
22-Aug	0	00:00	00:00	0	00:00	00:00	28	06:12	06:40
23-Aug	0	00:00	00:00	0	00:00	00:00	28	06:12	06:40
24-Aug	0	00:00	00:00	0	00:00	00:00	27	06:13	06:40
25-Aug	0	00:00	00:00	0	00:00	00:00	26	06:14	06:40
26-Aug	0	00:00	00:00	0	00:00	00:00	24	06:16	06:40
27-Aug	0	00:00	00:00	0	00:00	00:00	22	06:17	06:39
28-Aug	0	00:00	00:00	0	00:00	00:00	20	06:18	06:38
29-Aug	0	00:00	00:00	0	00:00	00:00	18	06:19	06:37
30-Aug	0	00:00	00:00	0	00:00	00:00	16	06:20	06:36
31-Aug	0	00:00	00:00	0	00:00	00:00	13	06:22	06:35
1-Sep	0	00:00	00:00	0	00:00	00:00	10	06:23	06:33
2-Sep	0	00:00	00:00	0	00:00	00:00	6	06:24	06:30
3-Sep	0	00:00	00:00	0	00:00	00:00	2	06:25	06:27
1-Oct	0	00:00	00:00	3	07:31	07:34	0	00:00	00:00
2-Oct	0	00:00	00:00	14	07:25	07:39	0	00:00	00:00
3-Oct	0	00:00	00:00	18	07:23	07:41	0	00:00	00:00
4-Oct	0	00:00	00:00	23	07:20	07:43	0	00:00	00:00
5-Oct	0	00:00	00:00	25	07:19	07:44	0	00:00	00:00
6-Oct	0	00:00	00:00	26	07:18	07:44	0	00:00	00:00
7-Oct	0	00:00	00:00	28	07:17	07:45	0	00:00	00:00
8-Oct	0	00:00	00:00	29	07:16	07:45	0	00:00	00:00
9-Oct	0	00:00	00:00	30	07:15	07:45	0	00:00	00:00
10-Oct	0	00:00	00:00	30	07:15	07:45	0	00:00	00:00
11-Oct	0	00:00	00:00	31	07:14	07:45	0	00:00	00:00
12-Oct	0	00:00	00:00	28	07:16	07:44	0	00:00	00:00
13-Oct	0	00:00	00:00	27	07:17	07:44	0	00:00	00:00
14-Oct	0	00:00	00:00	24	07:19	07:43	0	00:00	00:00
15-Oct	0	00:00	00:00	23	07:20	07:43	0	00:00	00:00
16-Oct	0	00:00	00:00	21	07:21	07:42	0	00:00	00:00
17-Oct	0	00:00	00:00	17	07:23	07:40	0	00:00	00:00
18-Oct	0	00:00	00:00	15	07:24	07:39	0	00:00	00:00
19-Oct	0	00:00	00:00	11	07:26	07:37	0	00:00	00:00
20-Oct	0	00:00	00:00	8	07:27	07:35	0	00:00	00:00
21-Oct	0	00:00	00:00	2	07:29	07:31	0	00:00	00:00
14-Nov	5	08:28	08:33	0	00:00	00:00	0	00:00	00:00
15-Nov	11	08:25	08:36	0	00:00	00:00	0	00:00	00:00
16-Nov	15	08:23	08:38	0	00:00	00:00	0	00:00	00:00
17-Nov	18	08:22	08:40	0	00:00	00:00	0	00:00	00:00
18-Nov	20	08:21	08:41	0	00:00	00:00	0	00:00	00:00
19-Nov	21	08:21	08:42	0	00:00	00:00	0	00:00	00:00
20-Nov	23	08:20	08:43	0	00:00	00:00	0	00:00	00:00

21-Nov	24	08:20	08:44	0	00:00	00:00	0	00:00	00:00
22-Nov	24	08:20	08:44	0	00:00	00:00	0	00:00	00:00
23-Nov	25	08:20	08:45	0	00:00	00:00	0	00:00	00:00
24-Nov	25	08:20	08:45	0	00:00	00:00	0	00:00	00:00
25-Nov	25	08:21	08:46	0	00:00	00:00	0	00:00	00:00
26-Nov	24	08:22	08:46	0	00:00	00:00	0	00:00	00:00
27-Nov	23	08:24	08:47	0	00:00	00:00	0	00:00	00:00
28-Nov	22	08:25	08:47	0	00:00	00:00	0	00:00	00:00
29-Nov	22	08:26	08:48	0	00:00	00:00	0	00:00	00:00
30-Nov	20	08:28	08:48	0	00:00	00:00	0	00:00	00:00
1-Dec	19	08:29	08:48	0	00:00	00:00	0	00:00	00:00
2-Dec	18	08:30	08:48	0	00:00	00:00	0	00:00	00:00
3-Dec	18	08:31	08:49	0	00:00	00:00	0	00:00	00:00
4-Dec	16	08:33	08:49	0	00:00	00:00	0	00:00	00:00
5-Dec	15	08:34	08:49	0	00:00	00:00	0	00:00	00:00
6-Dec	14	08:35	08:49	0	00:00	00:00	0	00:00	00:00
7-Dec	14	08:36	08:50	0	00:00	00:00	0	00:00	00:00
8-Dec	13	08:37	08:50	0	00:00	00:00	0	00:00	00:00
9-Dec	12	08:38	08:50	0	00:00	00:00	0	00:00	00:00
10-Dec	11	08:39	08:50	0	00:00	00:00	0	00:00	00:00
11-Dec	11	08:40	08:51	0	00:00	00:00	0	00:00	00:00
12-Dec	10	08:41	08:51	0	00:00	00:00	0	00:00	00:00
13-Dec	9	08:42	08:51	0	00:00	00:00	0	00:00	00:00
14-Dec	10	08:42	08:52	0	00:00	00:00	0	00:00	00:00
15-Dec	9	08:43	08:52	0	00:00	00:00	0	00:00	00:00
16-Dec	8	08:44	08:52	0	00:00	00:00	0	00:00	00:00
17-Dec	8	08:45	08:53	0	00:00	00:00	0	00:00	00:00
18-Dec	8	08:45	08:53	0	00:00	00:00	0	00:00	00:00
19-Dec	8	08:46	08:54	0	00:00	00:00	0	00:00	00:00
20-Dec	8	08:46	08:54	0	00:00	00:00	0	00:00	00:00
21-Dec	8	08:47	08:55	0	00:00	00:00	0	00:00	00:00
22-Dec	8	08:47	08:55	0	00:00	00:00	0	00:00	00:00
23-Dec	8	08:48	08:56	0	00:00	00:00	0	00:00	00:00
24-Dec	8	08:48	08:56	0	00:00	00:00	0	00:00	00:00
25-Dec	9	08:48	08:57	0	00:00	00:00	0	00:00	00:00
26-Dec	8	08:49	08:57	0	00:00	00:00	0	00:00	00:00
27-Dec	9	08:49	08:58	0	00:00	00:00	0	00:00	00:00
28-Dec	10	08:49	08:59	0	00:00	00:00	0	00:00	00:00
29-Dec	10	08:49	08:59	0	00:00	00:00	0	00:00	00:00
30-Dec	11	08:49	09:00	0	00:00	00:00	0	00:00	00:00
31-Dec	12	08:49	09:01	0	00:00	00:00	0	00:00	00:00

Receptor: 402

Calculation: Shadow Flicker

Rotor Orientation Type: SphereAroundRotorCentre

Timezone: CST (UTC-06:00) *Daylight savings time is not considered in the timestamps in this document

Summary of turbine results:

Turbine	Annual Hours (hh:mm)
72	15:19

Astronomical Worst Case (hours): 15

Reduction Factor: 0.27

Expected Case (hours): 4

Summary of results per day:

*Days with no shadow flicker events have been excluded from the table below

Turbine 72

Day	Maximum Minutes	Start Time	End Time
10-Mar	6	18:11	18:17
11-Mar	11	18:07	18:18
12-Mar	14	18:05	18:19
13-Mar	18	18:03	18:21
14-Mar	21	18:01	18:22
15-Mar	24	18:00	18:24
16-Mar	26	17:59	18:25
17-Mar	28	17:58	18:26
18-Mar	31	17:57	18:28
19-Mar	31	17:57	18:28
20-Mar	31	17:57	18:28
21-Mar	30	17:57	18:27
22-Mar	30	17:57	18:27
23-Mar	29	17:57	18:26
24-Mar	28	17:57	18:25
25-Mar	26	17:58	18:24
26-Mar	23	17:59	18:22
27-Mar	21	18:00	18:21
28-Mar	17	18:01	18:18
29-Mar	11	18:04	18:15
11-Sep	9	17:57	18:06
12-Sep	16	17:53	18:09
13-Sep	20	17:51	18:11
14-Sep	23	17:49	18:12
15-Sep	26	17:47	18:13
16-Sep	27	17:46	18:13
17-Sep	29	17:45	18:14
18-Sep	30	17:44	18:14
19-Sep	31	17:43	18:14
20-Sep	31	17:43	18:14
21-Sep	31	17:42	18:13
22-Sep	31	17:42	18:13
23-Sep	29	17:42	18:11
24-Sep	27	17:42	18:09
25-Sep	25	17:42	18:07
26-Sep	22	17:43	18:05
27-Sep	19	17:44	18:03
28-Sep	16	17:45	18:01
29-Sep	13	17:46	17:59
30-Sep	8	17:49	17:57

Receptor: 403
 Calculation: Shadow Flicker
 Rotor Orientation Type: SphereAroundRotorCentre
 Timezone: CST (UTC-06:00) *Daylight savings time is not considered in the timestamps in this document

Summary of turbine results:

Turbine	Annual Hours (hh:mm)
54	13:06
55	5:36

Astronomical Worst Case (hours): 19
 Reduction Factor: 0.26
 Expected Case (hours): 5

Summary of results per day: *Days with no shadow flicker events have been excluded from the table below

Turbine	54	55				
	Maximum	Maximum				
Day	Minutes	Start Time	End Time	Minutes	Start Time	End Time
4-Mar	4	07:34	07:38	0	00:00	00:00
5-Mar	9	07:32	07:41	0	00:00	00:00
6-Mar	13	07:30	07:43	0	00:00	00:00
7-Mar	16	07:28	07:44	0	00:00	00:00
8-Mar	19	07:26	07:45	0	00:00	00:00
9-Mar	22	07:24	07:46	0	00:00	00:00
10-Mar	24	07:22	07:46	0	00:00	00:00
11-Mar	26	07:20	07:46	0	00:00	00:00
12-Mar	28	07:18	07:46	0	00:00	00:00
13-Mar	29	07:17	07:46	0	00:00	00:00
14-Mar	30	07:16	07:46	0	00:00	00:00
15-Mar	29	07:16	07:45	0	00:00	00:00
16-Mar	27	07:17	07:44	0	00:00	00:00
17-Mar	26	07:17	07:43	0	00:00	00:00
18-Mar	24	07:18	07:42	0	00:00	00:00
19-Mar	23	07:18	07:41	0	00:00	00:00
20-Mar	19	07:20	07:39	0	00:00	00:00
21-Mar	14	07:22	07:36	0	00:00	00:00
22-Mar	7	07:25	07:32	0	00:00	00:00
24-Mar	0	00:00	00:00	2	06:55	06:57
25-Mar	0	00:00	00:00	6	06:53	06:59
26-Mar	0	00:00	00:00	9	06:51	07:00
27-Mar	0	00:00	00:00	12	06:49	07:01
28-Mar	0	00:00	00:00	14	06:47	07:01
29-Mar	0	00:00	00:00	16	06:45	07:01
30-Mar	0	00:00	00:00	18	06:43	07:01
31-Mar	0	00:00	00:00	20	06:41	07:01
1-Apr	0	00:00	00:00	19	06:41	07:00
2-Apr	0	00:00	00:00	17	06:42	06:59
3-Apr	0	00:00	00:00	16	06:42	06:58
4-Apr	0	00:00	00:00	12	06:44	06:56
5-Apr	0	00:00	00:00	7	06:46	06:53
5-Sep	0	00:00	00:00	6	06:42	06:48
6-Sep	0	00:00	00:00	12	06:39	06:51
7-Sep	0	00:00	00:00	15	06:37	06:52
8-Sep	0	00:00	00:00	17	06:36	06:53
9-Sep	0	00:00	00:00	18	06:35	06:53
10-Sep	0	00:00	00:00	19	06:34	06:53
11-Sep	0	00:00	00:00	18	06:35	06:53
12-Sep	0	00:00	00:00	17	06:36	06:53
13-Sep	0	00:00	00:00	14	06:38	06:52
14-Sep	0	00:00	00:00	12	06:39	06:51
15-Sep	0	00:00	00:00	10	06:40	06:50
16-Sep	0	00:00	00:00	7	06:41	06:48
17-Sep	0	00:00	00:00	3	06:43	06:46
19-Sep	5	07:13	07:18	0	00:00	00:00
20-Sep	14	07:08	07:22	0	00:00	00:00
21-Sep	18	07:06	07:24	0	00:00	00:00
22-Sep	21	07:04	07:25	0	00:00	00:00

23-Sep	24	07:02	07:26	0	00:00	00:00
24-Sep	26	07:01	07:27	0	00:00	00:00
25-Sep	27	07:00	07:27	0	00:00	00:00
26-Sep	28	06:59	07:27	0	00:00	00:00
27-Sep	29	06:58	07:27	0	00:00	00:00
28-Sep	29	06:58	07:27	0	00:00	00:00
29-Sep	29	06:58	07:27	0	00:00	00:00
30-Sep	27	06:59	07:26	0	00:00	00:00
1-Oct	25	07:01	07:26	0	00:00	00:00
2-Oct	23	07:02	07:25	0	00:00	00:00
3-Oct	21	07:03	07:24	0	00:00	00:00
4-Oct	17	07:05	07:22	0	00:00	00:00
5-Oct	15	07:06	07:21	0	00:00	00:00
6-Oct	12	07:07	07:19	0	00:00	00:00
7-Oct	7	07:09	07:16	0	00:00	00:00

Receptor: 417

Calculation: Shadow Flicker

Rotor Orientation Type: SphereAroundRotorCentre

Timezone: CST (UTC-06:00) *Daylight savings time is not considered in the timestamps in this document

Summary of turbine results:

Turbine	Annual Hours (hh:mm)
32	7:49
33A	8:00
34	17:13

Astronomical Worst Case (hours): 33

Reduction Factor: 0.21

Expected Case (hours): 7

Summary of results per day: *Days with no shadow flicker events have been excluded from the table below

Day	Turbine 32			Turbine 33A			Turbine 34		
	Maximum Minutes	Start Time	End Time	Maximum Minutes	Start Time	End Time	Maximum Minutes	Start Time	End Time
10-Jan	1	16:45	16:46	0	00:00	00:00	0	00:00	00:00
11-Jan	2	16:45	16:47	0	00:00	00:00	0	00:00	00:00
12-Jan	4	16:44	16:48	0	00:00	00:00	0	00:00	00:00
13-Jan	6	16:44	16:50	0	00:00	00:00	0	00:00	00:00
14-Jan	7	16:44	16:51	0	00:00	00:00	0	00:00	00:00
15-Jan	9	16:44	16:53	0	00:00	00:00	0	00:00	00:00
16-Jan	10	16:44	16:54	0	00:00	00:00	0	00:00	00:00
17-Jan	11	16:44	16:55	0	00:00	00:00	0	00:00	00:00
18-Jan	13	16:44	16:57	0	00:00	00:00	0	00:00	00:00
19-Jan	14	16:44	16:58	0	00:00	00:00	0	00:00	00:00
20-Jan	15	16:45	17:00	0	00:00	00:00	0	00:00	00:00
21-Jan	16	16:45	17:01	0	00:00	00:00	0	00:00	00:00
22-Jan	18	16:45	17:03	0	00:00	00:00	0	00:00	00:00
23-Jan	18	16:46	17:04	0	00:00	00:00	0	00:00	00:00
24-Jan	18	16:47	17:05	0	00:00	00:00	0	00:00	00:00
25-Jan	18	16:47	17:05	0	00:00	00:00	0	00:00	00:00
26-Jan	17	16:48	17:05	0	00:00	00:00	0	00:00	00:00
27-Jan	15	16:49	17:04	0	00:00	00:00	0	00:00	00:00
28-Jan	12	16:51	17:03	0	00:00	00:00	0	00:00	00:00
29-Jan	8	16:53	17:01	0	00:00	00:00	0	00:00	00:00
3-Feb	0	00:00	00:00	4	17:18	17:22	0	00:00	00:00
4-Feb	0	00:00	00:00	6	17:17	17:23	0	00:00	00:00
5-Feb	0	00:00	00:00	9	17:16	17:25	0	00:00	00:00
6-Feb	0	00:00	00:00	11	17:15	17:26	0	00:00	00:00
7-Feb	0	00:00	00:00	13	17:15	17:28	0	00:00	00:00
8-Feb	0	00:00	00:00	16	17:14	17:30	0	00:00	00:00
9-Feb	0	00:00	00:00	17	17:14	17:31	0	00:00	00:00
10-Feb	0	00:00	00:00	19	17:14	17:33	0	00:00	00:00
11-Feb	0	00:00	00:00	20	17:14	17:34	0	00:00	00:00
12-Feb	0	00:00	00:00	22	17:14	17:36	0	00:00	00:00
13-Feb	0	00:00	00:00	22	17:15	17:37	0	00:00	00:00
14-Feb	0	00:00	00:00	21	17:15	17:36	0	00:00	00:00
15-Feb	0	00:00	00:00	19	17:16	17:35	0	00:00	00:00
16-Feb	0	00:00	00:00	17	17:17	17:34	0	00:00	00:00
17-Feb	0	00:00	00:00	14	17:19	17:33	0	00:00	00:00
18-Feb	0	00:00	00:00	9	17:21	17:30	0	00:00	00:00
18-Mar	0	00:00	00:00	0	00:00	00:00	8	18:20	18:28
19-Mar	0	00:00	00:00	0	00:00	00:00	12	18:17	18:29
20-Mar	0	00:00	00:00	0	00:00	00:00	15	18:15	18:30
21-Mar	0	00:00	00:00	0	00:00	00:00	19	18:13	18:32
22-Mar	0	00:00	00:00	0	00:00	00:00	22	18:11	18:33
23-Mar	0	00:00	00:00	0	00:00	00:00	24	18:10	18:34
24-Mar	0	00:00	00:00	0	00:00	00:00	27	18:09	18:36
25-Mar	0	00:00	00:00	0	00:00	00:00	29	18:08	18:37
26-Mar	0	00:00	00:00	0	00:00	00:00	30	18:08	18:38
27-Mar	0	00:00	00:00	0	00:00	00:00	33	18:07	18:40
28-Mar	0	00:00	00:00	0	00:00	00:00	33	18:07	18:40
29-Mar	0	00:00	00:00	0	00:00	00:00	33	18:07	18:40
30-Mar	0	00:00	00:00	0	00:00	00:00	32	18:07	18:39

31-Mar	0	00:00	00:00	0	00:00	00:00	32	18:07	18:39
1-Apr	0	00:00	00:00	0	00:00	00:00	31	18:07	18:38
2-Apr	0	00:00	00:00	0	00:00	00:00	29	18:08	18:37
3-Apr	0	00:00	00:00	0	00:00	00:00	27	18:08	18:35
4-Apr	0	00:00	00:00	0	00:00	00:00	25	18:09	18:34
5-Apr	0	00:00	00:00	0	00:00	00:00	22	18:10	18:32
6-Apr	0	00:00	00:00	0	00:00	00:00	18	18:12	18:30
7-Apr	0	00:00	00:00	0	00:00	00:00	11	18:15	18:26
2-Sep	0	00:00	00:00	0	00:00	00:00	11	18:13	18:24
3-Sep	0	00:00	00:00	0	00:00	00:00	18	18:09	18:27
4-Sep	0	00:00	00:00	0	00:00	00:00	21	18:07	18:28
5-Sep	0	00:00	00:00	0	00:00	00:00	25	18:05	18:30
6-Sep	0	00:00	00:00	0	00:00	00:00	27	18:03	18:30
7-Sep	0	00:00	00:00	0	00:00	00:00	29	18:02	18:31
8-Sep	0	00:00	00:00	0	00:00	00:00	30	18:01	18:31
9-Sep	0	00:00	00:00	0	00:00	00:00	32	18:00	18:32
10-Sep	0	00:00	00:00	0	00:00	00:00	33	17:59	18:32
11-Sep	0	00:00	00:00	0	00:00	00:00	33	17:59	18:32
12-Sep	0	00:00	00:00	0	00:00	00:00	33	17:58	18:31
13-Sep	0	00:00	00:00	0	00:00	00:00	33	17:58	18:31
14-Sep	0	00:00	00:00	0	00:00	00:00	31	17:58	18:29
15-Sep	0	00:00	00:00	0	00:00	00:00	29	17:58	18:27
16-Sep	0	00:00	00:00	0	00:00	00:00	27	17:58	18:25
17-Sep	0	00:00	00:00	0	00:00	00:00	25	17:58	18:23
18-Sep	0	00:00	00:00	0	00:00	00:00	23	17:58	18:21
19-Sep	0	00:00	00:00	0	00:00	00:00	20	17:59	18:19
20-Sep	0	00:00	00:00	0	00:00	00:00	17	18:00	18:17
21-Sep	0	00:00	00:00	0	00:00	00:00	13	18:02	18:15
22-Sep	0	00:00	00:00	0	00:00	00:00	9	18:04	18:13
23-Sep	0	00:00	00:00	0	00:00	00:00	3	18:08	18:11
22-Oct	0	00:00	00:00	10	16:51	17:01	0	00:00	00:00
23-Oct	0	00:00	00:00	14	16:49	17:03	0	00:00	00:00
24-Oct	0	00:00	00:00	17	16:47	17:04	0	00:00	00:00
25-Oct	0	00:00	00:00	19	16:46	17:05	0	00:00	00:00
26-Oct	0	00:00	00:00	21	16:45	17:06	0	00:00	00:00
27-Oct	0	00:00	00:00	23	16:44	17:07	0	00:00	00:00
28-Oct	0	00:00	00:00	21	16:44	17:05	0	00:00	00:00
29-Oct	0	00:00	00:00	20	16:44	17:04	0	00:00	00:00
30-Oct	0	00:00	00:00	19	16:43	17:02	0	00:00	00:00
31-Oct	0	00:00	00:00	18	16:43	17:01	0	00:00	00:00
1-Nov	0	00:00	00:00	15	16:44	16:59	0	00:00	00:00
2-Nov	0	00:00	00:00	13	16:44	16:57	0	00:00	00:00
3-Nov	0	00:00	00:00	11	16:45	16:56	0	00:00	00:00
4-Nov	0	00:00	00:00	9	16:45	16:54	0	00:00	00:00
5-Nov	0	00:00	00:00	7	16:46	16:53	0	00:00	00:00
6-Nov	0	00:00	00:00	4	16:48	16:52	0	00:00	00:00
11-Nov	8	16:24	16:32	0	00:00	00:00	0	00:00	00:00
12-Nov	12	16:22	16:34	0	00:00	00:00	0	00:00	00:00
13-Nov	15	16:21	16:36	0	00:00	00:00	0	00:00	00:00
14-Nov	17	16:20	16:37	0	00:00	00:00	0	00:00	00:00
15-Nov	18	16:20	16:38	0	00:00	00:00	0	00:00	00:00
16-Nov	18	16:20	16:38	0	00:00	00:00	0	00:00	00:00
17-Nov	19	16:19	16:38	0	00:00	00:00	0	00:00	00:00
18-Nov	18	16:19	16:37	0	00:00	00:00	0	00:00	00:00
19-Nov	17	16:19	16:36	0	00:00	00:00	0	00:00	00:00
20-Nov	15	16:20	16:35	0	00:00	00:00	0	00:00	00:00
21-Nov	14	16:20	16:34	0	00:00	00:00	0	00:00	00:00
22-Nov	13	16:20	16:33	0	00:00	00:00	0	00:00	00:00
23-Nov	11	16:21	16:32	0	00:00	00:00	0	00:00	00:00
24-Nov	10	16:21	16:31	0	00:00	00:00	0	00:00	00:00
25-Nov	9	16:22	16:31	0	00:00	00:00	0	00:00	00:00
26-Nov	7	16:23	16:30	0	00:00	00:00	0	00:00	00:00
27-Nov	6	16:23	16:29	0	00:00	00:00	0	00:00	00:00
28-Nov	5	16:24	16:29	0	00:00	00:00	0	00:00	00:00
29-Nov	3	16:25	16:28	0	00:00	00:00	0	00:00	00:00
30-Nov	2	16:26	16:28	0	00:00	00:00	0	00:00	00:00

Receptor: 490

Calculation: Shadow Flicker

Rotor Orientation Type: SphereAroundRotorCentre

Timezone: CST (UTC-06:00) *Daylight savings time is not considered in the timestamps in this document

Summary of turbine results:

Turbine	Annual Hours (hh:mm)
71	8:16
73	13:55
73B	6:49

Astronomical Worst Case (hours): 29

Reduction Factor: 0.24

Expected Case (hours): 7

Summary of results per day: *Days with no shadow flicker events have been excluded from the table below

Turbine	71			73			73B		
Day	Maximum Minutes	Start Time	End Time	Maximum Minutes	Start Time	End Time	Maximum Minutes	Start Time	End Time
6-Jan	1	16:40	16:41	0	00:00	00:00	0	00:00	00:00
7-Jan	2	16:40	16:42	0	00:00	00:00	0	00:00	00:00
8-Jan	3	16:40	16:43	0	00:00	00:00	0	00:00	00:00
9-Jan	5	16:40	16:45	0	00:00	00:00	0	00:00	00:00
10-Jan	6	16:40	16:46	0	00:00	00:00	0	00:00	00:00
11-Jan	7	16:40	16:47	0	00:00	00:00	0	00:00	00:00
12-Jan	8	16:40	16:48	0	00:00	00:00	0	00:00	00:00
13-Jan	10	16:40	16:50	0	00:00	00:00	0	00:00	00:00
14-Jan	10	16:41	16:51	0	00:00	00:00	0	00:00	00:00
15-Jan	12	16:41	16:53	0	00:00	00:00	0	00:00	00:00
16-Jan	13	16:41	16:54	0	00:00	00:00	0	00:00	00:00
17-Jan	14	16:41	16:55	0	00:00	00:00	0	00:00	00:00
18-Jan	15	16:42	16:57	0	00:00	00:00	0	00:00	00:00
19-Jan	16	16:42	16:58	0	00:00	00:00	0	00:00	00:00
20-Jan	17	16:43	17:00	0	00:00	00:00	0	00:00	00:00
21-Jan	17	16:44	17:01	0	00:00	00:00	0	00:00	00:00
22-Jan	19	16:44	17:03	0	00:00	00:00	0	00:00	00:00
23-Jan	19	16:45	17:04	0	00:00	00:00	0	00:00	00:00
24-Jan	17	16:46	17:03	0	00:00	00:00	0	00:00	00:00
25-Jan	15	16:47	17:02	0	00:00	00:00	0	00:00	00:00
26-Jan	12	16:49	17:01	0	00:00	00:00	0	00:00	00:00
27-Jan	8	16:51	16:59	0	00:00	00:00	0	00:00	00:00
22-Mar	0	00:00	00:00	0	00:00	00:00	1	06:59	07:00
23-Mar	0	00:00	00:00	0	00:00	00:00	4	06:57	07:01
24-Mar	0	00:00	00:00	0	00:00	00:00	7	06:55	07:02
25-Mar	0	00:00	00:00	0	00:00	00:00	10	06:53	07:03
26-Mar	0	00:00	00:00	0	00:00	00:00	12	06:51	07:03
27-Mar	0	00:00	00:00	0	00:00	00:00	15	06:49	07:04
28-Mar	0	00:00	00:00	0	00:00	00:00	16	06:47	07:03
29-Mar	0	00:00	00:00	0	00:00	00:00	18	06:45	07:03
30-Mar	0	00:00	00:00	0	00:00	00:00	20	06:43	07:03
31-Mar	0	00:00	00:00	0	00:00	00:00	21	06:41	07:02
1-Apr	0	00:00	00:00	0	00:00	00:00	22	06:39	07:01
2-Apr	0	00:00	00:00	0	00:00	00:00	20	06:40	07:00
3-Apr	0	00:00	00:00	0	00:00	00:00	17	06:41	06:58
4-Apr	0	00:00	00:00	0	00:00	00:00	13	06:43	06:56
5-Apr	0	00:00	00:00	0	00:00	00:00	7	06:46	06:53
19-Apr	0	00:00	00:00	3	06:07	06:10	0	00:00	00:00
20-Apr	0	00:00	00:00	6	06:05	06:11	0	00:00	00:00
21-Apr	0	00:00	00:00	10	06:03	06:13	0	00:00	00:00
22-Apr	0	00:00	00:00	12	06:02	06:14	0	00:00	00:00
23-Apr	0	00:00	00:00	14	06:00	06:14	0	00:00	00:00
24-Apr	0	00:00	00:00	17	05:58	06:15	0	00:00	00:00
25-Apr	0	00:00	00:00	18	05:57	06:15	0	00:00	00:00
26-Apr	0	00:00	00:00	20	05:55	06:15	0	00:00	00:00
27-Apr	0	00:00	00:00	21	05:54	06:15	0	00:00	00:00

28-Apr	0	00:00	00:00	23	05:52	06:15	0	00:00	00:00
29-Apr	0	00:00	00:00	24	05:51	06:15	0	00:00	00:00
30-Apr	0	00:00	00:00	26	05:49	06:15	0	00:00	00:00
1-May	0	00:00	00:00	27	05:48	06:15	0	00:00	00:00
2-May	0	00:00	00:00	28	05:46	06:14	0	00:00	00:00
3-May	0	00:00	00:00	27	05:47	06:14	0	00:00	00:00
4-May	0	00:00	00:00	26	05:47	06:13	0	00:00	00:00
5-May	0	00:00	00:00	24	05:48	06:12	0	00:00	00:00
6-May	0	00:00	00:00	22	05:49	06:11	0	00:00	00:00
7-May	0	00:00	00:00	21	05:49	06:10	0	00:00	00:00
8-May	0	00:00	00:00	18	05:51	06:09	0	00:00	00:00
9-May	0	00:00	00:00	15	05:52	06:07	0	00:00	00:00
10-May	0	00:00	00:00	11	05:54	06:05	0	00:00	00:00
31-Jul	0	00:00	00:00	6	06:07	06:13	0	00:00	00:00
1-Aug	0	00:00	00:00	13	06:03	06:16	0	00:00	00:00
2-Aug	0	00:00	00:00	17	06:01	06:18	0	00:00	00:00
3-Aug	0	00:00	00:00	19	06:00	06:19	0	00:00	00:00
4-Aug	0	00:00	00:00	21	05:59	06:20	0	00:00	00:00
5-Aug	0	00:00	00:00	23	05:58	06:21	0	00:00	00:00
6-Aug	0	00:00	00:00	25	05:57	06:22	0	00:00	00:00
7-Aug	0	00:00	00:00	26	05:56	06:22	0	00:00	00:00
8-Aug	0	00:00	00:00	28	05:55	06:23	0	00:00	00:00
9-Aug	0	00:00	00:00	28	05:55	06:23	0	00:00	00:00
10-Aug	0	00:00	00:00	27	05:56	06:23	0	00:00	00:00
11-Aug	0	00:00	00:00	25	05:58	06:23	0	00:00	00:00
12-Aug	0	00:00	00:00	24	05:59	06:23	0	00:00	00:00
13-Aug	0	00:00	00:00	23	06:00	06:23	0	00:00	00:00
14-Aug	0	00:00	00:00	21	06:01	06:22	0	00:00	00:00
15-Aug	0	00:00	00:00	20	06:02	06:22	0	00:00	00:00
16-Aug	0	00:00	00:00	18	06:03	06:21	0	00:00	00:00
17-Aug	0	00:00	00:00	16	06:05	06:21	0	00:00	00:00
18-Aug	0	00:00	00:00	14	06:06	06:20	0	00:00	00:00
19-Aug	0	00:00	00:00	12	06:07	06:19	0	00:00	00:00
20-Aug	0	00:00	00:00	9	06:08	06:17	0	00:00	00:00
21-Aug	0	00:00	00:00	6	06:09	06:15	0	00:00	00:00
22-Aug	0	00:00	00:00	2	06:11	06:13	0	00:00	00:00
5-Sep	0	00:00	00:00	0	00:00	00:00	6	06:42	06:48
6-Sep	0	00:00	00:00	0	00:00	00:00	13	06:38	06:51
7-Sep	0	00:00	00:00	0	00:00	00:00	17	06:36	06:53
8-Sep	0	00:00	00:00	0	00:00	00:00	20	06:34	06:54
9-Sep	0	00:00	00:00	0	00:00	00:00	21	06:33	06:54
10-Sep	0	00:00	00:00	0	00:00	00:00	21	06:34	06:55
11-Sep	0	00:00	00:00	0	00:00	00:00	20	06:35	06:55
12-Sep	0	00:00	00:00	0	00:00	00:00	19	06:36	06:55
13-Sep	0	00:00	00:00	0	00:00	00:00	16	06:38	06:54
14-Sep	0	00:00	00:00	0	00:00	00:00	15	06:39	06:54
15-Sep	0	00:00	00:00	0	00:00	00:00	13	06:40	06:53
16-Sep	0	00:00	00:00	0	00:00	00:00	11	06:41	06:52
17-Sep	0	00:00	00:00	0	00:00	00:00	8	06:43	06:51
18-Sep	0	00:00	00:00	0	00:00	00:00	5	06:44	06:49
19-Sep	0	00:00	00:00	0	00:00	00:00	2	06:45	06:47
13-Nov	7	16:24	16:31	0	00:00	00:00	0	00:00	00:00
14-Nov	12	16:21	16:33	0	00:00	00:00	0	00:00	00:00
15-Nov	15	16:20	16:35	0	00:00	00:00	0	00:00	00:00
16-Nov	17	16:19	16:36	0	00:00	00:00	0	00:00	00:00
17-Nov	18	16:19	16:37	0	00:00	00:00	0	00:00	00:00
18-Nov	19	16:18	16:37	0	00:00	00:00	0	00:00	00:00
19-Nov	18	16:18	16:36	0	00:00	00:00	0	00:00	00:00
20-Nov	17	16:18	16:35	0	00:00	00:00	0	00:00	00:00
21-Nov	16	16:18	16:34	0	00:00	00:00	0	00:00	00:00
22-Nov	15	16:18	16:33	0	00:00	00:00	0	00:00	00:00
23-Nov	14	16:18	16:32	0	00:00	00:00	0	00:00	00:00
24-Nov	13	16:18	16:31	0	00:00	00:00	0	00:00	00:00
25-Nov	12	16:19	16:31	0	00:00	00:00	0	00:00	00:00
26-Nov	11	16:19	16:30	0	00:00	00:00	0	00:00	00:00
27-Nov	9	16:20	16:29	0	00:00	00:00	0	00:00	00:00
28-Nov	9	16:20	16:29	0	00:00	00:00	0	00:00	00:00

29-Nov	7	16:21	16:28	0	00:00	00:00	0	00:00	00:00
30-Nov	7	16:21	16:28	0	00:00	00:00	0	00:00	00:00
1-Dec	5	16:22	16:27	0	00:00	00:00	0	00:00	00:00
2-Dec	4	16:23	16:27	0	00:00	00:00	0	00:00	00:00
3-Dec	3	16:23	16:26	0	00:00	00:00	0	00:00	00:00
4-Dec	2	16:24	16:26	0	00:00	00:00	0	00:00	00:00
5-Dec	1	16:25	16:26	0	00:00	00:00	0	00:00	00:00

Receptor: 492
 Calculation: Shadow Flicker
 Rotor Orientation Type: SphereAroundRotorCentre
 Timezone: CST (UTC-06:00) *Daylight savings time is not considered in the timestamps in this document

Summary of turbine results:

Turbine	Annual Hours (hh:mm)
73	23:31
73B	10:22

Astronomical Worst Case (hours): 34
 Reduction Factor: 0.26
 Expected Case (hours): 9

Summary of results per day: *Days with no shadow flicker events have been excluded from the table below

Day	Turbine 73			Turbine 73B		
	Maximum Minutes	Start Time	End Time	Maximum Minutes	Start Time	End Time
15-Mar	0	00:00	00:00	1	07:12	07:13
16-Mar	0	00:00	00:00	5	07:10	07:15
17-Mar	0	00:00	00:00	9	07:08	07:17
18-Mar	0	00:00	00:00	12	07:06	07:18
19-Mar	0	00:00	00:00	14	07:05	07:19
20-Mar	0	00:00	00:00	16	07:03	07:19
21-Mar	0	00:00	00:00	18	07:01	07:19
22-Mar	0	00:00	00:00	20	06:59	07:19
23-Mar	0	00:00	00:00	22	06:57	07:19
24-Mar	0	00:00	00:00	24	06:55	07:19
25-Mar	0	00:00	00:00	25	06:53	07:18
26-Mar	0	00:00	00:00	27	06:51	07:18
27-Mar	0	00:00	00:00	26	06:51	07:17
28-Mar	0	00:00	00:00	24	06:52	07:16
29-Mar	0	00:00	00:00	22	06:52	07:14
30-Mar	0	00:00	00:00	19	06:54	07:13
31-Mar	0	00:00	00:00	15	06:55	07:10
1-Apr	0	00:00	00:00	7	06:59	07:06
16-Apr	3	06:12	06:15	0	00:00	00:00
17-Apr	8	06:10	06:18	0	00:00	00:00
18-Apr	11	06:08	06:19	0	00:00	00:00
19-Apr	14	06:07	06:21	0	00:00	00:00
20-Apr	17	06:05	06:22	0	00:00	00:00
21-Apr	20	06:03	06:23	0	00:00	00:00
22-Apr	21	06:02	06:23	0	00:00	00:00
23-Apr	24	06:00	06:24	0	00:00	00:00
24-Apr	26	05:58	06:24	0	00:00	00:00
25-Apr	28	05:57	06:25	0	00:00	00:00
26-Apr	30	05:55	06:25	0	00:00	00:00
27-Apr	31	05:54	06:25	0	00:00	00:00
28-Apr	33	05:52	06:25	0	00:00	00:00
29-Apr	34	05:51	06:25	0	00:00	00:00
30-Apr	35	05:49	06:24	0	00:00	00:00
1-May	35	05:49	06:24	0	00:00	00:00
2-May	35	05:49	06:24	0	00:00	00:00
3-May	34	05:49	06:23	0	00:00	00:00
4-May	34	05:49	06:23	0	00:00	00:00
5-May	32	05:50	06:22	0	00:00	00:00
6-May	31	05:50	06:21	0	00:00	00:00
7-May	30	05:51	06:21	0	00:00	00:00
8-May	28	05:52	06:20	0	00:00	00:00
9-May	26	05:53	06:19	0	00:00	00:00
10-May	24	05:54	06:18	0	00:00	00:00
11-May	21	05:55	06:16	0	00:00	00:00
12-May	18	05:57	06:15	0	00:00	00:00
13-May	14	05:59	06:13	0	00:00	00:00
14-May	7	06:02	06:09	0	00:00	00:00
28-Jul	11	06:10	06:21	0	00:00	00:00

29-Jul	16	06:08	06:24	0	00:00	00:00
30-Jul	19	06:06	06:25	0	00:00	00:00
31-Jul	23	06:04	06:27	0	00:00	00:00
1-Aug	25	06:03	06:28	0	00:00	00:00
2-Aug	27	06:02	06:29	0	00:00	00:00
3-Aug	29	06:01	06:30	0	00:00	00:00
4-Aug	31	06:00	06:31	0	00:00	00:00
5-Aug	32	05:59	06:31	0	00:00	00:00
6-Aug	33	05:59	06:32	0	00:00	00:00
7-Aug	34	05:58	06:32	0	00:00	00:00
8-Aug	34	05:58	06:32	0	00:00	00:00
9-Aug	35	05:57	06:32	0	00:00	00:00
10-Aug	35	05:57	06:32	0	00:00	00:00
11-Aug	34	05:58	06:32	0	00:00	00:00
12-Aug	33	05:59	06:32	0	00:00	00:00
13-Aug	32	06:00	06:32	0	00:00	00:00
14-Aug	31	06:01	06:32	0	00:00	00:00
15-Aug	29	06:02	06:31	0	00:00	00:00
16-Aug	28	06:03	06:31	0	00:00	00:00
17-Aug	25	06:05	06:30	0	00:00	00:00
18-Aug	23	06:06	06:29	0	00:00	00:00
19-Aug	21	06:07	06:28	0	00:00	00:00
20-Aug	19	06:08	06:27	0	00:00	00:00
21-Aug	17	06:09	06:26	0	00:00	00:00
22-Aug	13	06:11	06:24	0	00:00	00:00
23-Aug	10	06:12	06:22	0	00:00	00:00
24-Aug	7	06:13	06:20	0	00:00	00:00
25-Aug	2	06:14	06:16	0	00:00	00:00
9-Sep	0	00:00	00:00	8	06:52	07:00
10-Sep	0	00:00	00:00	15	06:48	07:03
11-Sep	0	00:00	00:00	19	06:46	07:05
12-Sep	0	00:00	00:00	22	06:44	07:06
13-Sep	0	00:00	00:00	23	06:43	07:06
14-Sep	0	00:00	00:00	26	06:41	07:07
15-Sep	0	00:00	00:00	27	06:40	07:07
16-Sep	0	00:00	00:00	26	06:41	07:07
17-Sep	0	00:00	00:00	24	06:43	07:07
18-Sep	0	00:00	00:00	23	06:44	07:07
19-Sep	0	00:00	00:00	21	06:45	07:06
20-Sep	0	00:00	00:00	20	06:46	07:06
21-Sep	0	00:00	00:00	17	06:48	07:05
22-Sep	0	00:00	00:00	15	06:49	07:04
23-Sep	0	00:00	00:00	13	06:50	07:03
24-Sep	0	00:00	00:00	9	06:52	07:01
25-Sep	0	00:00	00:00	6	06:53	06:59
26-Sep	0	00:00	00:00	2	06:54	06:56

Receptor: 493

Calculation: Shadow Flicker

Rotor Orientation Type: SphereAroundRotorCentre

Timezone: CST (UTC-06:00) *Daylight savings time is not considered in the timestamps in this document

Summary of turbine results:

Turbine	Annual Hours (hh:mm)
71	8:55
73	13:25
73B	6:28

Astronomical Worst Case (hours): 29

Reduction Factor: 0.24

Expected Case (hours): 7

Summary of results per day: *Days with no shadow flicker events have been excluded from the table below

Turbine	71			73			73B		
Day	Maximum Minutes	Start Time	End Time	Maximum Minutes	Start Time	End Time	Maximum Minutes	Start Time	End Time
8-Jan	1	16:42	16:43	0	00:00	00:00	0	00:00	00:00
9-Jan	3	16:42	16:45	0	00:00	00:00	0	00:00	00:00
10-Jan	4	16:42	16:46	0	00:00	00:00	0	00:00	00:00
11-Jan	5	16:42	16:47	0	00:00	00:00	0	00:00	00:00
12-Jan	6	16:42	16:48	0	00:00	00:00	0	00:00	00:00
13-Jan	8	16:42	16:50	0	00:00	00:00	0	00:00	00:00
14-Jan	9	16:42	16:51	0	00:00	00:00	0	00:00	00:00
15-Jan	11	16:42	16:53	0	00:00	00:00	0	00:00	00:00
16-Jan	11	16:43	16:54	0	00:00	00:00	0	00:00	00:00
17-Jan	12	16:43	16:55	0	00:00	00:00	0	00:00	00:00
18-Jan	14	16:43	16:57	0	00:00	00:00	0	00:00	00:00
19-Jan	15	16:43	16:58	0	00:00	00:00	0	00:00	00:00
20-Jan	16	16:44	17:00	0	00:00	00:00	0	00:00	00:00
21-Jan	17	16:44	17:01	0	00:00	00:00	0	00:00	00:00
22-Jan	18	16:45	17:03	0	00:00	00:00	0	00:00	00:00
23-Jan	19	16:45	17:04	0	00:00	00:00	0	00:00	00:00
24-Jan	20	16:46	17:06	0	00:00	00:00	0	00:00	00:00
25-Jan	19	16:47	17:06	0	00:00	00:00	0	00:00	00:00
26-Jan	18	16:48	17:06	0	00:00	00:00	0	00:00	00:00
27-Jan	16	16:49	17:05	0	00:00	00:00	0	00:00	00:00
28-Jan	14	16:50	17:04	0	00:00	00:00	0	00:00	00:00
29-Jan	9	16:53	17:02	0	00:00	00:00	0	00:00	00:00
26-Mar	0	00:00	00:00	0	00:00	00:00	3	06:51	06:54
27-Mar	0	00:00	00:00	0	00:00	00:00	6	06:49	06:55
28-Mar	0	00:00	00:00	0	00:00	00:00	9	06:47	06:56
29-Mar	0	00:00	00:00	0	00:00	00:00	12	06:45	06:57
30-Mar	0	00:00	00:00	0	00:00	00:00	14	06:43	06:57
31-Mar	0	00:00	00:00	0	00:00	00:00	16	06:41	06:57
1-Apr	0	00:00	00:00	0	00:00	00:00	18	06:39	06:57
2-Apr	0	00:00	00:00	0	00:00	00:00	19	06:37	06:56
3-Apr	0	00:00	00:00	0	00:00	00:00	19	06:36	06:55
4-Apr	0	00:00	00:00	0	00:00	00:00	20	06:34	06:54
5-Apr	0	00:00	00:00	0	00:00	00:00	19	06:34	06:53
6-Apr	0	00:00	00:00	0	00:00	00:00	17	06:35	06:52
7-Apr	0	00:00	00:00	0	00:00	00:00	14	06:36	06:50
8-Apr	0	00:00	00:00	0	00:00	00:00	7	06:39	06:46
22-Apr	0	00:00	00:00	1	06:02	06:03	0	00:00	00:00
23-Apr	0	00:00	00:00	5	06:00	06:05	0	00:00	00:00
24-Apr	0	00:00	00:00	8	05:58	06:06	0	00:00	00:00
25-Apr	0	00:00	00:00	10	05:57	06:07	0	00:00	00:00
26-Apr	0	00:00	00:00	13	05:55	06:08	0	00:00	00:00
27-Apr	0	00:00	00:00	15	05:54	06:09	0	00:00	00:00
28-Apr	0	00:00	00:00	17	05:52	06:09	0	00:00	00:00
29-Apr	0	00:00	00:00	18	05:51	06:09	0	00:00	00:00
30-Apr	0	00:00	00:00	20	05:49	06:09	0	00:00	00:00
1-May	0	00:00	00:00	21	05:48	06:09	0	00:00	00:00

2-May	0	00:00	00:00	23	05:46	06:09	0	00:00	00:00
3-May	0	00:00	00:00	24	05:45	06:09	0	00:00	00:00
4-May	0	00:00	00:00	26	05:43	06:09	0	00:00	00:00
5-May	0	00:00	00:00	27	05:42	06:09	0	00:00	00:00
6-May	0	00:00	00:00	26	05:42	06:08	0	00:00	00:00
7-May	0	00:00	00:00	26	05:42	06:08	0	00:00	00:00
8-May	0	00:00	00:00	24	05:43	06:07	0	00:00	00:00
9-May	0	00:00	00:00	23	05:43	06:06	0	00:00	00:00
10-May	0	00:00	00:00	21	05:44	06:05	0	00:00	00:00
11-May	0	00:00	00:00	19	05:45	06:04	0	00:00	00:00
12-May	0	00:00	00:00	16	05:47	06:03	0	00:00	00:00
13-May	0	00:00	00:00	12	05:49	06:01	0	00:00	00:00
14-May	0	00:00	00:00	7	05:51	05:58	0	00:00	00:00
28-Jul	0	00:00	00:00	10	06:00	06:10	0	00:00	00:00
29-Jul	0	00:00	00:00	14	05:58	06:12	0	00:00	00:00
30-Jul	0	00:00	00:00	17	05:56	06:13	0	00:00	00:00
31-Jul	0	00:00	00:00	19	05:55	06:14	0	00:00	00:00
1-Aug	0	00:00	00:00	21	05:54	06:15	0	00:00	00:00
2-Aug	0	00:00	00:00	23	05:53	06:16	0	00:00	00:00
3-Aug	0	00:00	00:00	25	05:52	06:17	0	00:00	00:00
4-Aug	0	00:00	00:00	25	05:52	06:17	0	00:00	00:00
5-Aug	0	00:00	00:00	27	05:51	06:18	0	00:00	00:00
6-Aug	0	00:00	00:00	26	05:52	06:18	0	00:00	00:00
7-Aug	0	00:00	00:00	25	05:53	06:18	0	00:00	00:00
8-Aug	0	00:00	00:00	24	05:54	06:18	0	00:00	00:00
9-Aug	0	00:00	00:00	23	05:55	06:18	0	00:00	00:00
10-Aug	0	00:00	00:00	22	05:56	06:18	0	00:00	00:00
11-Aug	0	00:00	00:00	19	05:58	06:17	0	00:00	00:00
12-Aug	0	00:00	00:00	18	05:59	06:17	0	00:00	00:00
13-Aug	0	00:00	00:00	16	06:00	06:16	0	00:00	00:00
14-Aug	0	00:00	00:00	15	06:01	06:16	0	00:00	00:00
15-Aug	0	00:00	00:00	13	06:02	06:15	0	00:00	00:00
16-Aug	0	00:00	00:00	10	06:03	06:13	0	00:00	00:00
17-Aug	0	00:00	00:00	7	06:05	06:12	0	00:00	00:00
18-Aug	0	00:00	00:00	4	06:06	06:10	0	00:00	00:00
19-Aug	0	00:00	00:00	1	06:07	06:08	0	00:00	00:00
2-Sep	0	00:00	00:00	0	00:00	00:00	7	06:37	06:44
3-Sep	0	00:00	00:00	0	00:00	00:00	13	06:34	06:47
4-Sep	0	00:00	00:00	0	00:00	00:00	16	06:32	06:48
5-Sep	0	00:00	00:00	0	00:00	00:00	19	06:30	06:49
6-Sep	0	00:00	00:00	0	00:00	00:00	21	06:29	06:50
7-Sep	0	00:00	00:00	0	00:00	00:00	20	06:30	06:50
8-Sep	0	00:00	00:00	0	00:00	00:00	19	06:31	06:50
9-Sep	0	00:00	00:00	0	00:00	00:00	17	06:33	06:50
10-Sep	0	00:00	00:00	0	00:00	00:00	16	06:34	06:50
11-Sep	0	00:00	00:00	0	00:00	00:00	14	06:35	06:49
12-Sep	0	00:00	00:00	0	00:00	00:00	12	06:36	06:48
13-Sep	0	00:00	00:00	0	00:00	00:00	9	06:38	06:47
14-Sep	0	00:00	00:00	0	00:00	00:00	7	06:39	06:46
15-Sep	0	00:00	00:00	0	00:00	00:00	4	06:40	06:44
16-Sep	0	00:00	00:00	0	00:00	00:00	1	06:41	06:42
11-Nov	9	16:24	16:33	0	00:00	00:00	0	00:00	00:00
12-Nov	13	16:22	16:35	0	00:00	00:00	0	00:00	00:00
13-Nov	16	16:21	16:37	0	00:00	00:00	0	00:00	00:00
14-Nov	18	16:20	16:38	0	00:00	00:00	0	00:00	00:00
15-Nov	20	16:19	16:39	0	00:00	00:00	0	00:00	00:00
16-Nov	20	16:19	16:39	0	00:00	00:00	0	00:00	00:00
17-Nov	19	16:19	16:38	0	00:00	00:00	0	00:00	00:00
18-Nov	19	16:18	16:37	0	00:00	00:00	0	00:00	00:00
19-Nov	18	16:18	16:36	0	00:00	00:00	0	00:00	00:00
20-Nov	16	16:19	16:35	0	00:00	00:00	0	00:00	00:00
21-Nov	15	16:19	16:34	0	00:00	00:00	0	00:00	00:00
22-Nov	14	16:19	16:33	0	00:00	00:00	0	00:00	00:00
23-Nov	13	16:19	16:32	0	00:00	00:00	0	00:00	00:00
24-Nov	11	16:20	16:31	0	00:00	00:00	0	00:00	00:00
25-Nov	11	16:20	16:31	0	00:00	00:00	0	00:00	00:00
26-Nov	9	16:21	16:30	0	00:00	00:00	0	00:00	00:00
27-Nov	8	16:21	16:29	0	00:00	00:00	0	00:00	00:00

28-Nov	7	16:22	16:29	0	00:00	00:00	0	00:00	00:00
29-Nov	5	16:23	16:28	0	00:00	00:00	0	00:00	00:00
30-Nov	4	16:24	16:28	0	00:00	00:00	0	00:00	00:00
1-Dec	3	16:24	16:27	0	00:00	00:00	0	00:00	00:00
2-Dec	2	16:25	16:27	0	00:00	00:00	0	00:00	00:00

Receptor: 511

Calculation: Shadow Flicker

Rotor Orientation Type: SphereAroundRotorCentre

Timezone: CST (UTC-06:00) *Daylight savings time is not considered in the timestamps in this document

Summary of turbine results:

Turbine	Annual Hours (hh:mm)
7	4:18

Astronomical Worst Case (hours): 4

Reduction Factor: 0.25

Expected Case (hours): 1

Summary of results per day: *Days with no shadow flicker events have been excluded from the table below

Turbine 7

Day	Maximum Minutes	Start Time	End Time
3-Jun	2	05:15	05:17
4-Jun	3	05:15	05:18
5-Jun	3	05:15	05:18
6-Jun	5	05:14	05:19
7-Jun	5	05:14	05:19
8-Jun	6	05:14	05:20
9-Jun	6	05:14	05:20
10-Jun	8	05:13	05:21
11-Jun	8	05:13	05:21
12-Jun	8	05:13	05:21
13-Jun	9	05:13	05:22
14-Jun	9	05:13	05:22
15-Jun	9	05:13	05:22
16-Jun	10	05:13	05:23
17-Jun	10	05:13	05:23
18-Jun	10	05:13	05:23
19-Jun	11	05:13	05:24
20-Jun	10	05:14	05:24
21-Jun	10	05:14	05:24
22-Jun	10	05:14	05:24
23-Jun	10	05:14	05:24
24-Jun	9	05:15	05:24
25-Jun	10	05:15	05:25
26-Jun	10	05:15	05:25
27-Jun	9	05:16	05:25
28-Jun	9	05:16	05:25
29-Jun	8	05:17	05:25
30-Jun	8	05:17	05:25
1-Jul	7	05:18	05:25
2-Jul	6	05:19	05:25
3-Jul	6	05:19	05:25
4-Jul	5	05:20	05:25
5-Jul	4	05:20	05:24
6-Jul	3	05:21	05:24
7-Jul	2	05:22	05:24

Receptor: 517

Calculation: Shadow Flicker

Rotor Orientation Type: SphereAroundRotorCentre

Timezone: CST (UTC-06:00) *Daylight savings time is not considered in the timestamps in this document

Summary of turbine results:

Turbine	Annual Hours (hh:mm)
48	21:46
49	7:19

Astronomical Worst Case (hours): 29

Reduction Factor: 0.24

Expected Case (hours): 7

Summary of results per day: *Days with no shadow flicker events have been excluded from the table below

Turbine	48	49				
Day	Maximum Minutes	Maximum Minutes	Start Time	End Time	Start Time	End Time
1-Jan	28	0	09:01	09:29	00:00	00:00
2-Jan	28	0	09:01	09:29	00:00	00:00
3-Jan	27	0	09:02	09:29	00:00	00:00
4-Jan	27	0	09:03	09:30	00:00	00:00
5-Jan	27	0	09:03	09:30	00:00	00:00
6-Jan	26	0	09:04	09:30	00:00	00:00
7-Jan	25	0	09:05	09:30	00:00	00:00
8-Jan	24	0	09:06	09:30	00:00	00:00
9-Jan	23	0	09:07	09:30	00:00	00:00
10-Jan	22	0	09:08	09:30	00:00	00:00
11-Jan	20	0	09:09	09:29	00:00	00:00
12-Jan	19	0	09:10	09:29	00:00	00:00
13-Jan	18	0	09:11	09:29	00:00	00:00
14-Jan	15	0	09:13	09:28	00:00	00:00
15-Jan	12	0	09:15	09:27	00:00	00:00
16-Jan	8	0	09:17	09:25	00:00	00:00
17-Feb	0	3	00:00	00:00	08:03	08:06
18-Feb	0	6	00:00	00:00	08:01	08:07
19-Feb	0	9	00:00	00:00	07:59	08:08
20-Feb	0	12	00:00	00:00	07:57	08:09
21-Feb	0	13	00:00	00:00	07:56	08:09
22-Feb	0	16	00:00	00:00	07:54	08:10
23-Feb	0	18	00:00	00:00	07:52	08:10
24-Feb	0	19	00:00	00:00	07:50	08:09
25-Feb	0	21	00:00	00:00	07:48	08:09
26-Feb	0	22	00:00	00:00	07:47	08:09
27-Feb	0	22	00:00	00:00	07:46	08:08
28-Feb	0	20	00:00	00:00	07:47	08:07
29-Feb	0	17	00:00	00:00	07:48	08:05
1-Mar	0	14	00:00	00:00	07:49	08:03
2-Mar	0	8	00:00	00:00	07:52	08:00
10-Oct	0	12	00:00	00:00	07:25	07:37
11-Oct	0	16	00:00	00:00	07:23	07:39
12-Oct	0	19	00:00	00:00	07:21	07:40
13-Oct	0	21	00:00	00:00	07:20	07:41
14-Oct	0	22	00:00	00:00	07:19	07:41
15-Oct	0	21	00:00	00:00	07:20	07:41
16-Oct	0	21	00:00	00:00	07:21	07:42
17-Oct	0	18	00:00	00:00	07:23	07:41
18-Oct	0	17	00:00	00:00	07:24	07:41
19-Oct	0	15	00:00	00:00	07:26	07:41
20-Oct	0	13	00:00	00:00	07:27	07:40
21-Oct	0	10	00:00	00:00	07:29	07:39
22-Oct	0	8	00:00	00:00	07:30	07:38
23-Oct	0	5	00:00	00:00	07:32	07:37
24-Oct	0	2	00:00	00:00	07:33	07:35
25-Nov	8	0	08:54	09:02	00:00	00:00
26-Nov	12	0	08:53	09:05	00:00	00:00
27-Nov	16	0	08:51	09:07	00:00	00:00

28-Nov	17	08:51	09:08	0	00:00	00:00
29-Nov	20	08:50	09:10	0	00:00	00:00
30-Nov	21	08:50	09:11	0	00:00	00:00
1-Dec	23	08:49	09:12	0	00:00	00:00
2-Dec	24	08:49	09:13	0	00:00	00:00
3-Dec	24	08:49	09:13	0	00:00	00:00
4-Dec	25	08:49	09:14	0	00:00	00:00
5-Dec	26	08:49	09:15	0	00:00	00:00
6-Dec	27	08:49	09:16	0	00:00	00:00
7-Dec	26	08:50	09:16	0	00:00	00:00
8-Dec	27	08:50	09:17	0	00:00	00:00
9-Dec	28	08:50	09:18	0	00:00	00:00
10-Dec	28	08:50	09:18	0	00:00	00:00
11-Dec	28	08:51	09:19	0	00:00	00:00
12-Dec	29	08:51	09:20	0	00:00	00:00
13-Dec	29	08:51	09:20	0	00:00	00:00
14-Dec	29	08:52	09:21	0	00:00	00:00
15-Dec	29	08:52	09:21	0	00:00	00:00
16-Dec	29	08:53	09:22	0	00:00	00:00
17-Dec	29	08:53	09:22	0	00:00	00:00
18-Dec	29	08:54	09:23	0	00:00	00:00
19-Dec	29	08:54	09:23	0	00:00	00:00
20-Dec	29	08:55	09:24	0	00:00	00:00
21-Dec	29	08:55	09:24	0	00:00	00:00
22-Dec	29	08:56	09:25	0	00:00	00:00
23-Dec	29	08:56	09:25	0	00:00	00:00
24-Dec	29	08:57	09:26	0	00:00	00:00
25-Dec	29	08:57	09:26	0	00:00	00:00
26-Dec	29	08:58	09:27	0	00:00	00:00
27-Dec	29	08:58	09:27	0	00:00	00:00
28-Dec	29	08:59	09:28	0	00:00	00:00
29-Dec	29	08:59	09:28	0	00:00	00:00
30-Dec	28	09:00	09:28	0	00:00	00:00
31-Dec	28	09:01	09:29	0	00:00	00:00

Receptor: 531

Calculation: Shadow Flicker

Rotor Orientation Type: SphereAroundRotorCentre

Timezone: CST (UTC-06:00) *Daylight savings time is not considered in the timestamps in this document

Summary of turbine results:

Turbine	Annual Hours (hh:mm)
83	18:04
84	6:39

Astronomical Worst Case (hours): 25

Reduction Factor: 0.2

Expected Case (hours): 5

Summary of results per day: *Days with no shadow flicker events have been excluded from the table below

Turbine	83	84
Day	Maximum Minutes	Maximum Minutes
	Start Time	End Time
10-Feb	4	0
11-Feb	9	0
12-Feb	12	0
13-Feb	16	0
14-Feb	18	0
15-Feb	21	0
16-Feb	24	0
17-Feb	25	0
18-Feb	28	0
19-Feb	30	0
20-Feb	32	0
21-Feb	33	0
22-Feb	33	0
23-Feb	33	0
24-Feb	32	0
25-Feb	32	0
26-Feb	30	0
27-Feb	29	0
28-Feb	27	0
29-Feb	24	0
1-Mar	21	0
2-Mar	16	0
3-Mar	9	0
7-Jun	0	7
8-Jun	0	10
9-Jun	0	11
10-Jun	0	13
11-Jun	0	14
12-Jun	0	15
13-Jun	0	15
14-Jun	0	16
15-Jun	0	16
16-Jun	0	17
17-Jun	0	17
18-Jun	0	18
19-Jun	0	18
20-Jun	0	17
21-Jun	0	17
22-Jun	0	17
23-Jun	0	18
24-Jun	0	17
25-Jun	0	17
26-Jun	0	17
27-Jun	0	15
28-Jun	0	15
29-Jun	0	14
30-Jun	0	14
1-Jul	0	12
2-Jul	0	10

3-Jul	0	00:00	00:00	8	05:20	05:28
4-Jul	0	00:00	00:00	4	05:22	05:26
9-Oct	14	07:39	07:53	0	00:00	00:00
10-Oct	19	07:36	07:55	0	00:00	00:00
11-Oct	23	07:34	07:57	0	00:00	00:00
12-Oct	26	07:32	07:58	0	00:00	00:00
13-Oct	28	07:31	07:59	0	00:00	00:00
14-Oct	30	07:30	08:00	0	00:00	00:00
15-Oct	31	07:29	08:00	0	00:00	00:00
16-Oct	32	07:28	08:00	0	00:00	00:00
17-Oct	33	07:28	08:01	0	00:00	00:00
18-Oct	34	07:27	08:01	0	00:00	00:00
19-Oct	34	07:27	08:01	0	00:00	00:00
20-Oct	33	07:27	08:00	0	00:00	00:00
21-Oct	31	07:29	08:00	0	00:00	00:00
22-Oct	30	07:30	08:00	0	00:00	00:00
23-Oct	27	07:32	07:59	0	00:00	00:00
24-Oct	25	07:33	07:58	0	00:00	00:00
25-Oct	23	07:35	07:58	0	00:00	00:00
26-Oct	21	07:36	07:57	0	00:00	00:00
27-Oct	17	07:38	07:55	0	00:00	00:00
28-Oct	15	07:39	07:54	0	00:00	00:00
29-Oct	11	07:41	07:52	0	00:00	00:00
30-Oct	8	07:42	07:50	0	00:00	00:00
31-Oct	2	07:44	07:46	0	00:00	00:00

Receptor: 548

Calculation: Shadow Flicker

Rotor Orientation Type: SphereAroundRotorCentre

Timezone: CST (UTC-06:00) *Daylight savings time is not considered in the timestamps in this document

Summary of turbine results:

Turbine	Annual Hours (hh:mm)
83	35:27

Astronomical Worst Case (hours): 35

Reduction Factor: 0.23

Expected Case (hours): 8

Summary of results per day: *Days with no shadow flicker events have been excluded from the table below

Turbine 83

Day	Maximum		
	Minutes	Start Time	End Time
17-Feb	13	17:31	17:44
18-Feb	18	17:27	17:45
19-Feb	22	17:25	17:47
20-Feb	25	17:23	17:48
21-Feb	29	17:21	17:50
22-Feb	32	17:20	17:52
23-Feb	35	17:18	17:53
24-Feb	38	17:17	17:55
25-Feb	40	17:16	17:56
26-Feb	43	17:15	17:58
27-Feb	43	17:15	17:58
28-Feb	45	17:14	17:59
29-Feb	46	17:13	17:59
1-Mar	46	17:13	17:59
2-Mar	46	17:13	17:59
3-Mar	46	17:12	17:58
4-Mar	46	17:12	17:58
5-Mar	46	17:12	17:58
6-Mar	45	17:12	17:57
7-Mar	43	17:13	17:56
8-Mar	43	17:13	17:56
9-Mar	42	17:13	17:55
10-Mar	40	17:14	17:54
11-Mar	37	17:15	17:52
12-Mar	36	17:15	17:51
13-Mar	32	17:17	17:49
14-Mar	29	17:18	17:47
15-Mar	25	17:20	17:45
16-Mar	19	17:23	17:42
17-Mar	10	17:27	17:37
24-Sep	15	17:08	17:23
25-Sep	22	17:04	17:26
26-Sep	27	17:01	17:28
27-Sep	31	16:59	17:30
28-Sep	34	16:57	17:31
29-Sep	37	16:55	17:32
30-Sep	39	16:54	17:33
1-Oct	40	16:53	17:33
2-Oct	42	16:52	17:34
3-Oct	43	16:51	17:34
4-Oct	44	16:50	17:34
5-Oct	45	16:49	17:34
6-Oct	45	16:49	17:34
7-Oct	46	16:48	17:34
8-Oct	46	16:48	17:34
9-Oct	46	16:48	17:34
10-Oct	45	16:48	17:33
11-Oct	45	16:48	17:33
12-Oct	44	16:48	17:32

13-Oct	43	16:48	17:31
14-Oct	42	16:48	17:30
15-Oct	39	16:49	17:28
16-Oct	36	16:50	17:26
17-Oct	34	16:50	17:24
18-Oct	32	16:51	17:23
19-Oct	29	16:52	17:21
20-Oct	25	16:54	17:19
21-Oct	21	16:56	17:17
22-Oct	18	16:58	17:16
23-Oct	12	17:02	17:14

Receptor: 551
 Calculation: Shadow Flicker
 Rotor Orientation Type: SphereAroundRotorCentre
 Timezone: CST (UTC-06:00) *Daylight savings time is not considered in the timestamps in this document

Summary of turbine results:

Turbine	Annual Hours (hh:mm)
83	25:31

Astronomical Worst Case (hours):	26
Reduction Factor:	0.23
Expected Case (hours):	6

Summary of results per day: *Days with no shadow flicker events have been excluded from the table below

Turbine 83

Day	Maximum Minutes	Start Time	End Time
7-Mar	1	07:30	07:31
8-Mar	12	07:26	07:38
9-Mar	17	07:24	07:41
10-Mar	21	07:22	07:43
11-Mar	24	07:20	07:44
12-Mar	27	07:18	07:45
13-Mar	30	07:16	07:46
14-Mar	33	07:14	07:47
15-Mar	35	07:12	07:47
16-Mar	37	07:10	07:47
17-Mar	39	07:09	07:48
18-Mar	40	07:08	07:48
19-Mar	39	07:08	07:47
20-Mar	40	07:07	07:47
21-Mar	40	07:07	07:47
22-Mar	39	07:07	07:46
23-Mar	38	07:07	07:45
24-Mar	38	07:07	07:45
25-Mar	36	07:08	07:44
26-Mar	35	07:08	07:43
27-Mar	32	07:09	07:41
28-Mar	30	07:10	07:40
29-Mar	27	07:11	07:38
30-Mar	23	07:13	07:36
31-Mar	18	07:15	07:33
1-Apr	8	07:20	07:28
9-Sep	8	07:13	07:21
10-Sep	17	07:08	07:25
11-Sep	23	07:05	07:28
12-Sep	26	07:03	07:29
13-Sep	29	07:01	07:30
14-Sep	32	06:59	07:31
15-Sep	34	06:58	07:32
16-Sep	35	06:57	07:32
17-Sep	37	06:56	07:33
18-Sep	38	06:55	07:33
19-Sep	39	06:54	07:33
20-Sep	39	06:54	07:33
21-Sep	40	06:53	07:33
22-Sep	39	06:53	07:32
23-Sep	40	06:52	07:32
24-Sep	39	06:52	07:31
25-Sep	38	06:53	07:31
26-Sep	36	06:54	07:30
27-Sep	34	06:55	07:29
28-Sep	31	06:57	07:28
29-Sep	28	06:58	07:26
30-Sep	26	06:59	07:25
1-Oct	22	07:01	07:23
2-Oct	19	07:02	07:21

3-Oct	15	07:03	07:18
4-Oct	9	07:05	07:14

Receptor: 1014

Calculation: Shadow Flicker

Rotor Orientation Type: SphereAroundRotorCentre

Timezone: CST (UTC-06:00) *Daylight savings time is not considered in the timestamps in this document

Summary of turbine results:

Turbine	Annual Hours (hh:mm)
43	5:24

Astronomical Worst Case (hours): 5

Reduction Factor: 0.2

Expected Case (hours): 1

Summary of results per day: *Days with no shadow flicker events have been excluded from the table below

Turbine 43

Day	Maximum Minutes	Start Time	End Time
10-Feb	4	17:29	17:33
11-Feb	6	17:28	17:34
12-Feb	9	17:27	17:36
13-Feb	11	17:27	17:38
14-Feb	13	17:26	17:39
15-Feb	15	17:26	17:41
16-Feb	16	17:26	17:42
17-Feb	18	17:26	17:44
18-Feb	18	17:27	17:45
19-Feb	18	17:27	17:45
20-Feb	15	17:28	17:43
21-Feb	12	17:30	17:42
22-Feb	7	17:32	17:39
18-Oct	8	17:03	17:11
19-Oct	13	17:00	17:13
20-Oct	16	16:59	17:15
21-Oct	17	16:58	17:15
22-Oct	19	16:57	17:16
23-Oct	18	16:56	17:14
24-Oct	16	16:56	17:12
25-Oct	14	16:56	17:10
26-Oct	13	16:56	17:09
27-Oct	11	16:56	17:07
28-Oct	8	16:57	17:05
29-Oct	6	16:58	17:04
30-Oct	3	16:59	17:02

Receptor: 1023

Calculation: Shadow Flicker

Rotor Orientation Type: SphereAroundRotorCentre

Timezone: CST (UTC-06:00) *Daylight savings time is not considered in the timestamps in this document

Summary of turbine results:

Turbine	Annual Hours (hh:mm)
42	18:01
43	5:58

Astronomical Worst Case (hours): 24

Reduction Factor: 0.25

Expected Case (hours): 6

Summary of results per day: *Days with no shadow flicker events have been excluded from the table below

Turbine	42			43		
Day	Maximum Minutes	Start Time	End Time	Maximum Minutes	Start Time	End Time
1-Jan	11	08:49	09:00	0	00:00	00:00
2-Jan	12	08:49	09:01	0	00:00	00:00
3-Jan	12	08:49	09:01	0	00:00	00:00
4-Jan	13	08:49	09:02	0	00:00	00:00
5-Jan	14	08:49	09:03	0	00:00	00:00
6-Jan	14	08:49	09:03	0	00:00	00:00
7-Jan	16	08:48	09:04	0	00:00	00:00
8-Jan	16	08:48	09:04	0	00:00	00:00
9-Jan	17	08:48	09:05	0	00:00	00:00
10-Jan	18	08:47	09:05	0	00:00	00:00
11-Jan	19	08:47	09:06	0	00:00	00:00
12-Jan	20	08:46	09:06	0	00:00	00:00
13-Jan	21	08:46	09:07	0	00:00	00:00
14-Jan	22	08:45	09:07	0	00:00	00:00
15-Jan	23	08:44	09:07	0	00:00	00:00
16-Jan	23	08:44	09:07	0	00:00	00:00
17-Jan	24	08:43	09:07	0	00:00	00:00
18-Jan	24	08:43	09:07	0	00:00	00:00
19-Jan	23	08:44	09:07	0	00:00	00:00
20-Jan	22	08:45	09:07	0	00:00	00:00
21-Jan	21	08:46	09:07	0	00:00	00:00
22-Jan	19	08:47	09:06	0	00:00	00:00
23-Jan	18	08:48	09:06	0	00:00	00:00
24-Jan	15	08:50	09:05	0	00:00	00:00
25-Jan	11	08:52	09:03	0	00:00	00:00
26-Jan	5	08:55	09:00	0	00:00	00:00
10-Feb	0	00:00	00:00	2	08:14	08:16
11-Feb	0	00:00	00:00	5	08:12	08:17
12-Feb	0	00:00	00:00	7	08:11	08:18
13-Feb	0	00:00	00:00	10	08:09	08:19
14-Feb	0	00:00	00:00	11	08:08	08:19
15-Feb	0	00:00	00:00	14	08:06	08:20
16-Feb	0	00:00	00:00	16	08:04	08:20
17-Feb	0	00:00	00:00	16	08:03	08:19
18-Feb	0	00:00	00:00	18	08:01	08:19
19-Feb	0	00:00	00:00	19	07:59	08:18
20-Feb	0	00:00	00:00	19	07:58	08:17
21-Feb	0	00:00	00:00	17	07:59	08:16
22-Feb	0	00:00	00:00	14	08:01	08:15
23-Feb	0	00:00	00:00	9	08:03	08:12
17-Oct	0	00:00	00:00	3	07:38	07:41
18-Oct	0	00:00	00:00	11	07:34	07:45
19-Oct	0	00:00	00:00	16	07:31	07:47
20-Oct	0	00:00	00:00	18	07:30	07:48
21-Oct	0	00:00	00:00	20	07:29	07:49
22-Oct	0	00:00	00:00	19	07:30	07:49
23-Oct	0	00:00	00:00	17	07:32	07:49
24-Oct	0	00:00	00:00	17	07:33	07:50
25-Oct	0	00:00	00:00	14	07:35	07:49

26-Oct	0	00:00	00:00	13	07:36	07:49
27-Oct	0	00:00	00:00	11	07:38	07:49
28-Oct	0	00:00	00:00	9	07:39	07:48
29-Oct	0	00:00	00:00	7	07:41	07:48
30-Oct	0	00:00	00:00	5	07:42	07:47
31-Oct	0	00:00	00:00	1	07:44	07:45
15-Nov	7	08:26	08:33	0	00:00	00:00
16-Nov	12	08:24	08:36	0	00:00	00:00
17-Nov	15	08:23	08:38	0	00:00	00:00
18-Nov	17	08:22	08:39	0	00:00	00:00
19-Nov	19	08:21	08:40	0	00:00	00:00
20-Nov	21	08:20	08:41	0	00:00	00:00
21-Nov	22	08:20	08:42	0	00:00	00:00
22-Nov	23	08:20	08:43	0	00:00	00:00
23-Nov	24	08:20	08:44	0	00:00	00:00
24-Nov	24	08:20	08:44	0	00:00	00:00
25-Nov	24	08:21	08:45	0	00:00	00:00
26-Nov	23	08:22	08:45	0	00:00	00:00
27-Nov	22	08:24	08:46	0	00:00	00:00
28-Nov	21	08:25	08:46	0	00:00	00:00
29-Nov	21	08:26	08:47	0	00:00	00:00
30-Nov	19	08:28	08:47	0	00:00	00:00
1-Dec	18	08:29	08:47	0	00:00	00:00
2-Dec	17	08:30	08:47	0	00:00	00:00
3-Dec	17	08:31	08:48	0	00:00	00:00
4-Dec	15	08:33	08:48	0	00:00	00:00
5-Dec	14	08:34	08:48	0	00:00	00:00
6-Dec	14	08:35	08:49	0	00:00	00:00
7-Dec	13	08:36	08:49	0	00:00	00:00
8-Dec	12	08:37	08:49	0	00:00	00:00
9-Dec	11	08:38	08:49	0	00:00	00:00
10-Dec	11	08:39	08:50	0	00:00	00:00
11-Dec	10	08:40	08:50	0	00:00	00:00
12-Dec	9	08:41	08:50	0	00:00	00:00
13-Dec	9	08:42	08:51	0	00:00	00:00
14-Dec	9	08:42	08:51	0	00:00	00:00
15-Dec	8	08:43	08:51	0	00:00	00:00
16-Dec	8	08:44	08:52	0	00:00	00:00
17-Dec	7	08:45	08:52	0	00:00	00:00
18-Dec	7	08:45	08:52	0	00:00	00:00
19-Dec	7	08:46	08:53	0	00:00	00:00
20-Dec	7	08:46	08:53	0	00:00	00:00
21-Dec	7	08:47	08:54	0	00:00	00:00
22-Dec	7	08:47	08:54	0	00:00	00:00
23-Dec	7	08:48	08:55	0	00:00	00:00
24-Dec	7	08:48	08:55	0	00:00	00:00
25-Dec	8	08:48	08:56	0	00:00	00:00
26-Dec	8	08:49	08:57	0	00:00	00:00
27-Dec	8	08:49	08:57	0	00:00	00:00
28-Dec	9	08:49	08:58	0	00:00	00:00
29-Dec	10	08:49	08:59	0	00:00	00:00
30-Dec	10	08:49	08:59	0	00:00	00:00
31-Dec	11	08:49	09:00	0	00:00	00:00

Receptor: 1042

Calculation: Shadow Flicker

Rotor Orientation Type: SphereAroundRotorCentre

Timezone: CST (UTC-06:00) *Daylight savings time is not considered in the timestamps in this document

Summary of turbine results:

Turbine	Annual Hours (hh:mm)
95	22:49

Astronomical Worst Case (hours): 23

Reduction Factor: 0.3

Expected Case (hours): 7

Summary of results per day: *Days with no shadow flicker events have been excluded from the table below

Turbine 95

Day	Maximum		
	Minutes	Start Time	End Time
30-Apr	2	19:22	19:24
1-May	5	19:20	19:25
2-May	8	19:18	19:26
3-May	11	19:16	19:27
4-May	14	19:15	19:29
5-May	16	19:14	19:30
6-May	17	19:14	19:31
7-May	19	19:13	19:32
8-May	20	19:13	19:33
9-May	23	19:12	19:35
10-May	24	19:12	19:36
11-May	25	19:12	19:37
12-May	26	19:12	19:38
13-May	27	19:12	19:39
14-May	28	19:12	19:40
15-May	29	19:12	19:41
16-May	31	19:12	19:43
17-May	30	19:12	19:42
18-May	30	19:12	19:42
19-May	29	19:13	19:42
20-May	29	19:13	19:42
21-May	27	19:14	19:41
22-May	27	19:14	19:41
23-May	25	19:15	19:40
24-May	24	19:16	19:40
25-May	23	19:16	19:39
26-May	22	19:17	19:39
27-May	20	19:18	19:38
28-May	18	19:19	19:37
29-May	17	19:20	19:37
30-May	15	19:21	19:36
31-May	12	19:23	19:35
1-Jun	8	19:25	19:33
2-Jun	2	19:28	19:30
8-Jul	7	19:33	19:40
9-Jul	11	19:31	19:42
10-Jul	13	19:30	19:43
11-Jul	15	19:29	19:44
12-Jul	18	19:28	19:46
13-Jul	20	19:27	19:47
14-Jul	21	19:26	19:47
15-Jul	22	19:26	19:48
16-Jul	24	19:25	19:49
17-Jul	25	19:25	19:50
18-Jul	26	19:24	19:50
19-Jul	27	19:24	19:51
20-Jul	28	19:23	19:51
21-Jul	29	19:23	19:52
22-Jul	29	19:23	19:52

23-Jul	30	19:22	19:52
24-Jul	31	19:22	19:53
25-Jul	30	19:22	19:52
26-Jul	29	19:22	19:51
27-Jul	28	19:22	19:50
28-Jul	27	19:22	19:49
29-Jul	25	19:22	19:47
30-Jul	24	19:22	19:46
31-Jul	23	19:22	19:45
1-Aug	22	19:22	19:44
2-Aug	20	19:22	19:42
3-Aug	18	19:23	19:41
4-Aug	17	19:23	19:40
5-Aug	14	19:24	19:38
6-Aug	12	19:25	19:37
7-Aug	10	19:26	19:36
8-Aug	7	19:27	19:34
9-Aug	4	19:29	19:33

Receptor: 1064

Calculation: Shadow Flicker

Rotor Orientation Type: SphereAroundRotorCentre

Timezone: CST (UTC-06:00)

*Daylight savings time is not considered in the timestamps in this document

Summary of turbine results:

Turbine	Annual Hours (hh:mm)
40	13:52
41	39:49
65B	6:04

Astronomical Worst Case (hours): 48

Reduction Factor: 0.23

Expected Case (hours): 11

Summary of results per day: *Days with no shadow flicker events have been excluded from the table below

Turbine	40			41			65B		
Day	Maximum Minutes	Start Time	End Time	Maximum Minutes	Start Time	End Time	Maximum Minutes	Start Time	End Time
30-Jan	0	00:00	00:00	13	17:02	17:15	0	00:00	00:00
31-Jan	0	00:00	00:00	18	16:59	17:17	0	00:00	00:00
1-Feb	0	00:00	00:00	21	16:57	17:18	0	00:00	00:00
2-Feb	0	00:00	00:00	25	16:55	17:20	0	00:00	00:00
3-Feb	0	00:00	00:00	28	16:54	17:22	0	00:00	00:00
4-Feb	0	00:00	00:00	30	16:53	17:23	0	00:00	00:00
5-Feb	0	00:00	00:00	33	16:52	17:25	0	00:00	00:00
6-Feb	7	17:19	17:26	35	16:51	17:26	0	00:00	00:00
7-Feb	11	17:17	17:28	38	16:50	17:28	0	00:00	00:00
8-Feb	15	17:15	17:30	41	16:49	17:30	0	00:00	00:00
9-Feb	17	17:14	17:31	42	16:48	17:30	0	00:00	00:00
10-Feb	20	17:13	17:33	43	16:48	17:31	0	00:00	00:00
11-Feb	22	17:12	17:34	44	16:47	17:31	0	00:00	00:00
12-Feb	24	17:12	17:36	45	16:47	17:32	0	00:00	00:00
13-Feb	27	17:11	17:38	45	16:47	17:32	0	00:00	00:00
14-Feb	28	17:11	17:39	46	16:46	17:32	1	08:08	08:09
15-Feb	28	17:11	17:39	46	16:46	17:32	4	08:06	08:10
16-Feb	28	17:11	17:39	46	16:46	17:32	7	08:04	08:11
17-Feb	28	17:11	17:39	46	16:46	17:32	9	08:03	08:12
18-Feb	27	17:11	17:38	46	16:46	17:32	12	08:01	08:13
19-Feb	27	17:11	17:38	46	16:46	17:32	14	07:59	08:13
20-Feb	25	17:12	17:37	45	16:46	17:31	16	07:57	08:13
21-Feb	23	17:13	17:36	44	16:47	17:31	17	07:56	08:13
22-Feb	21	17:14	17:35	43	16:47	17:30	19	07:54	08:13
23-Feb	18	17:15	17:33	41	16:48	17:29	20	07:52	08:12
24-Feb	14	17:17	17:31	40	16:48	17:28	19	07:52	08:11
25-Feb	5	17:21	17:26	38	16:49	17:27	17	07:53	08:10
26-Feb	0	00:00	00:00	36	16:50	17:26	14	07:54	08:08
27-Feb	0	00:00	00:00	34	16:51	17:25	10	07:56	08:06
28-Feb	0	00:00	00:00	30	16:53	17:23	0	00:00	00:00
29-Feb	0	00:00	00:00	27	16:54	17:21	0	00:00	00:00
1-Mar	0	00:00	00:00	21	16:57	17:18	0	00:00	00:00
2-Mar	0	00:00	00:00	13	17:01	17:14	0	00:00	00:00
9-Oct	0	00:00	00:00	16	16:34	16:50	0	00:00	00:00
10-Oct	0	00:00	00:00	22	16:31	16:53	0	00:00	00:00
11-Oct	0	00:00	00:00	27	16:28	16:55	0	00:00	00:00
12-Oct	0	00:00	00:00	31	16:26	16:57	0	00:00	00:00
13-Oct	0	00:00	00:00	34	16:24	16:58	6	07:31	07:37
14-Oct	0	00:00	00:00	36	16:23	16:59	12	07:28	07:40
15-Oct	8	16:52	17:00	39	16:21	17:00	16	07:26	07:42
16-Oct	14	16:49	17:03	41	16:20	17:01	19	07:24	07:43
17-Oct	18	16:47	17:05	42	16:19	17:01	20	07:23	07:43
18-Oct	21	16:45	17:06	43	16:19	17:02	20	07:24	07:44
19-Oct	23	16:44	17:07	44	16:18	17:02	18	07:26	07:44
20-Oct	25	16:43	17:08	45	16:17	17:02	17	07:27	07:44
21-Oct	26	16:42	17:08	45	16:17	17:02	15	07:29	07:44

22-Oct	28	16:41	17:09	46	16:17	17:03	13	07:30	07:43
23-Oct	28	16:41	17:09	47	16:16	17:03	11	07:32	07:43
24-Oct	28	16:41	17:09	46	16:16	17:02	9	07:33	07:42
25-Oct	28	16:41	17:09	46	16:16	17:02	6	07:35	07:41
26-Oct	28	16:41	17:09	46	16:16	17:02	4	07:36	07:40
27-Oct	26	16:41	17:07	46	16:16	17:02	0	00:00	00:00
28-Oct	24	16:41	17:05	44	16:17	17:01	0	00:00	00:00
29-Oct	22	16:42	17:04	44	16:17	17:01	0	00:00	00:00
30-Oct	20	16:42	17:02	43	16:17	17:00	0	00:00	00:00
31-Oct	18	16:43	17:01	42	16:18	17:00	0	00:00	00:00
1-Nov	14	16:45	16:59	41	16:18	16:59	0	00:00	00:00
2-Nov	11	16:46	16:57	38	16:19	16:57	0	00:00	00:00
3-Nov	8	16:48	16:56	36	16:20	16:56	0	00:00	00:00
4-Nov	0	00:00	00:00	33	16:21	16:54	0	00:00	00:00
5-Nov	0	00:00	00:00	31	16:22	16:53	0	00:00	00:00
6-Nov	0	00:00	00:00	28	16:24	16:52	0	00:00	00:00
7-Nov	0	00:00	00:00	25	16:25	16:50	0	00:00	00:00
8-Nov	0	00:00	00:00	22	16:27	16:49	0	00:00	00:00
9-Nov	0	00:00	00:00	18	16:29	16:47	0	00:00	00:00
10-Nov	0	00:00	00:00	14	16:32	16:46	0	00:00	00:00

Receptor: 1068

Calculation: Shadow Flicker

Rotor Orientation Type: SphereAroundRotorCentre

Timezone: CST (UTC-06:00) *Daylight savings time is not considered in the timestamps in this document

Summary of turbine results:

Turbine	Annual Hours (hh:mm)
42	4:46
43	8:09
67B	13:46
68B	5:06

Astronomical Worst Case (hours): 32

Reduction Factor: 0.22

Expected Case (hours): 7

Summary of results per day: *Days with no shadow flicker events have been excluded from the table below

Turbine	42			43			67B			68B		
Day	Maximum Minutes	Start Time	End Time	Maximum Minutes	Start Time	End Time	Maximum Minutes	Start Time	End Time	Maximum Minutes	Start Time	End Time
1-Jan	0	00:00	00:00	0	00:00	00:00	20	08:52	09:12	0	00:00	00:00
2-Jan	0	00:00	00:00	0	00:00	00:00	20	08:53	09:13	0	00:00	00:00
3-Jan	0	00:00	00:00	0	00:00	00:00	20	08:53	09:13	0	00:00	00:00
4-Jan	0	00:00	00:00	0	00:00	00:00	19	08:54	09:13	0	00:00	00:00
5-Jan	0	00:00	00:00	0	00:00	00:00	18	08:55	09:13	0	00:00	00:00
6-Jan	0	00:00	00:00	0	00:00	00:00	17	08:56	09:13	0	00:00	00:00
7-Jan	0	00:00	00:00	0	00:00	00:00	16	08:57	09:13	0	00:00	00:00
8-Jan	0	00:00	00:00	0	00:00	00:00	15	08:58	09:13	0	00:00	00:00
9-Jan	0	00:00	00:00	0	00:00	00:00	14	08:59	09:13	0	00:00	00:00
10-Jan	0	00:00	00:00	0	00:00	00:00	12	09:00	09:12	0	00:00	00:00
11-Jan	0	00:00	00:00	0	00:00	00:00	9	09:02	09:11	0	00:00	00:00
12-Jan	0	00:00	00:00	0	00:00	00:00	6	09:04	09:10	0	00:00	00:00
30-Jan	0	00:00	00:00	0	00:00	00:00	0	00:00	00:00	1	08:29	08:30
31-Jan	0	00:00	00:00	0	00:00	00:00	0	00:00	00:00	3	08:28	08:31
1-Feb	0	00:00	00:00	0	00:00	00:00	0	00:00	00:00	5	08:27	08:32
2-Feb	0	00:00	00:00	0	00:00	00:00	0	00:00	00:00	7	08:26	08:33
3-Feb	0	00:00	00:00	0	00:00	00:00	0	00:00	00:00	10	08:24	08:34
4-Feb	0	00:00	00:00	0	00:00	00:00	0	00:00	00:00	11	08:23	08:34
5-Feb	0	00:00	00:00	0	00:00	00:00	0	00:00	00:00	13	08:21	08:34
6-Feb	0	00:00	00:00	0	00:00	00:00	0	00:00	00:00	14	08:20	08:34
7-Feb	0	00:00	00:00	0	00:00	00:00	0	00:00	00:00	16	08:18	08:34
8-Feb	0	00:00	00:00	0	00:00	00:00	0	00:00	00:00	17	08:17	08:34
9-Feb	0	00:00	00:00	0	00:00	00:00	0	00:00	00:00	17	08:16	08:33
10-Feb	0	00:00	00:00	0	00:00	00:00	0	00:00	00:00	15	08:17	08:32
11-Feb	0	00:00	00:00	0	00:00	00:00	0	00:00	00:00	13	08:18	08:31
12-Feb	0	00:00	00:00	0	00:00	00:00	0	00:00	00:00	9	08:20	08:29
22-Feb	1	17:51	17:52	0	00:00	00:00	0	00:00	00:00	0	00:00	00:00
23-Feb	4	17:49	17:53	0	00:00	00:00	0	00:00	00:00	0	00:00	00:00
24-Feb	7	17:48	17:55	0	00:00	00:00	0	00:00	00:00	0	00:00	00:00
25-Feb	9	17:47	17:56	0	00:00	00:00	0	00:00	00:00	0	00:00	00:00
26-Feb	12	17:46	17:58	0	00:00	00:00	0	00:00	00:00	0	00:00	00:00
27-Feb	13	17:46	17:59	0	00:00	00:00	0	00:00	00:00	0	00:00	00:00
28-Feb	15	17:46	18:01	0	00:00	00:00	0	00:00	00:00	0	00:00	00:00
29-Feb	16	17:46	18:02	0	00:00	00:00	0	00:00	00:00	0	00:00	00:00
1-Mar	18	17:46	18:04	0	00:00	00:00	0	00:00	00:00	0	00:00	00:00
2-Mar	17	17:46	18:03	0	00:00	00:00	0	00:00	00:00	0	00:00	00:00
3-Mar	15	17:47	18:02	0	00:00	00:00	0	00:00	00:00	0	00:00	00:00
4-Mar	11	17:49	18:00	0	00:00	00:00	0	00:00	00:00	0	00:00	00:00
5-Mar	3	17:53	17:56	0	00:00	00:00	0	00:00	00:00	0	00:00	00:00
8-Mar	0	00:00	00:00	6	18:08	18:14	0	00:00	00:00	0	00:00	00:00
9-Mar	0	00:00	00:00	9	18:06	18:15	0	00:00	00:00	0	00:00	00:00
10-Mar	0	00:00	00:00	12	18:05	18:17	0	00:00	00:00	0	00:00	00:00
11-Mar	0	00:00	00:00	15	18:03	18:18	0	00:00	00:00	0	00:00	00:00
12-Mar	0	00:00	00:00	16	18:03	18:19	0	00:00	00:00	0	00:00	00:00

13-Mar	0	00:00	00:00	19	18:02	18:21	0	00:00	00:00	0	00:00	00:00
14-Mar	0	00:00	00:00	21	18:01	18:22	0	00:00	00:00	0	00:00	00:00
15-Mar	0	00:00	00:00	23	18:01	18:24	0	00:00	00:00	0	00:00	00:00
16-Mar	0	00:00	00:00	24	18:01	18:25	0	00:00	00:00	0	00:00	00:00
17-Mar	0	00:00	00:00	23	18:01	18:24	0	00:00	00:00	0	00:00	00:00
18-Mar	0	00:00	00:00	21	18:02	18:23	0	00:00	00:00	0	00:00	00:00
19-Mar	0	00:00	00:00	20	18:02	18:22	0	00:00	00:00	0	00:00	00:00
20-Mar	0	00:00	00:00	17	18:03	18:20	0	00:00	00:00	0	00:00	00:00
21-Mar	0	00:00	00:00	13	18:05	18:18	0	00:00	00:00	0	00:00	00:00
22-Mar	0	00:00	00:00	5	18:09	18:14	0	00:00	00:00	0	00:00	00:00
19-Sep	0	00:00	00:00	11	17:53	18:04	0	00:00	00:00	0	00:00	00:00
20-Sep	0	00:00	00:00	16	17:50	18:06	0	00:00	00:00	0	00:00	00:00

21-Sep	0	00:00	00:00	19	17:48	18:07	0	00:00	00:00	0	00:00	00:00
22-Sep	0	00:00	00:00	21	17:47	18:08	0	00:00	00:00	0	00:00	00:00
23-Sep	0	00:00	00:00	23	17:45	18:08	0	00:00	00:00	0	00:00	00:00
24-Sep	0	00:00	00:00	23	17:45	18:08	0	00:00	00:00	0	00:00	00:00
25-Sep	0	00:00	00:00	23	17:44	18:07	0	00:00	00:00	0	00:00	00:00
26-Sep	0	00:00	00:00	22	17:43	18:05	0	00:00	00:00	0	00:00	00:00
27-Sep	0	00:00	00:00	20	17:43	18:03	0	00:00	00:00	0	00:00	00:00
28-Sep	0	00:00	00:00	18	17:43	18:01	0	00:00	00:00	0	00:00	00:00
29-Sep	0	00:00	00:00	16	17:43	17:59	0	00:00	00:00	0	00:00	00:00
30-Sep	0	00:00	00:00	13	17:44	17:57	0	00:00	00:00	0	00:00	00:00
1-Oct	0	00:00	00:00	10	17:45	17:55	0	00:00	00:00	0	00:00	00:00
2-Oct	0	00:00	00:00	7	17:46	17:53	0	00:00	00:00	0	00:00	00:00
3-Oct	0	00:00	00:00	3	17:48	17:51	0	00:00	00:00	0	00:00	00:00
6-Oct	8	17:27	17:35	0	00:00	00:00	0	00:00	00:00	0	00:00	00:00
7-Oct	13	17:24	17:37	0	00:00	00:00	0	00:00	00:00	0	00:00	00:00
8-Oct	16	17:22	17:38	0	00:00	00:00	0	00:00	00:00	0	00:00	00:00
9-Oct	18	17:21	17:39	0	00:00	00:00	0	00:00	00:00	0	00:00	00:00
10-Oct	18	17:20	17:38	0	00:00	00:00	0	00:00	00:00	0	00:00	00:00
11-Oct	16	17:20	17:36	0	00:00	00:00	0	00:00	00:00	0	00:00	00:00
12-Oct	15	17:19	17:34	0	00:00	00:00	0	00:00	00:00	0	00:00	00:00
13-Oct	13	17:19	17:32	0	00:00	00:00	0	00:00	00:00	0	00:00	00:00
14-Oct	11	17:19	17:30	0	00:00	00:00	0	00:00	00:00	0	00:00	00:00
15-Oct	8	17:20	17:28	0	00:00	00:00	0	00:00	00:00	0	00:00	00:00
16-Oct	6	17:20	17:26	0	00:00	00:00	0	00:00	00:00	0	00:00	00:00
17-Oct	3	17:21	17:24	0	00:00	00:00	0	00:00	00:00	0	00:00	00:00
28-Oct	0	00:00	00:00	0	00:00	00:00	0	00:00	00:00	2	07:53	07:55
29-Oct	0	00:00	00:00	0	00:00	00:00	0	00:00	00:00	10	07:49	07:59
30-Oct	0	00:00	00:00	0	00:00	00:00	0	00:00	00:00	14	07:47	08:01
31-Oct	0	00:00	00:00	0	00:00	00:00	0	00:00	00:00	16	07:46	08:02
1-Nov	0	00:00	00:00	0	00:00	00:00	0	00:00	00:00	18	07:45	08:03
2-Nov	0	00:00	00:00	0	00:00	00:00	0	00:00	00:00	16	07:47	08:03
3-Nov	0	00:00	00:00	0	00:00	00:00	0	00:00	00:00	16	07:48	08:04
4-Nov	0	00:00	00:00	0	00:00	00:00	0	00:00	00:00	14	07:50	08:04
5-Nov	0	00:00	00:00	0	00:00	00:00	0	00:00	00:00	13	07:51	08:04
6-Nov	0	00:00	00:00	0	00:00	00:00	0	00:00	00:00	11	07:53	08:04
7-Nov	0	00:00	00:00	0	00:00	00:00	0	00:00	00:00	10	07:54	08:04
8-Nov	0	00:00	00:00	0	00:00	00:00	0	00:00	00:00	7	07:56	08:03
9-Nov	0	00:00	00:00	0	00:00	00:00	0	00:00	00:00	5	07:58	08:03
10-Nov	0	00:00	00:00	0	00:00	00:00	0	00:00	00:00	3	07:59	08:02
29-Nov	0	00:00	00:00	0	00:00	00:00	7	08:44	08:51	0	00:00	00:00
30-Nov	0	00:00	00:00	0	00:00	00:00	10	08:43	08:53	0	00:00	00:00
1-Dec	0	00:00	00:00	0	00:00	00:00	12	08:42	08:54	0	00:00	00:00
2-Dec	0	00:00	00:00	0	00:00	00:00	14	08:41	08:55	0	00:00	00:00
3-Dec	0	00:00	00:00	0	00:00	00:00	16	08:41	08:57	0	00:00	00:00
4-Dec	0	00:00	00:00	0	00:00	00:00	17	08:41	08:58	0	00:00	00:00
5-Dec	0	00:00	00:00	0	00:00	00:00	17	08:41	08:58	0	00:00	00:00
6-Dec	0	00:00	00:00	0	00:00	00:00	18	08:41	08:59	0	00:00	00:00
7-Dec	0	00:00	00:00	0	00:00	00:00	19	08:41	09:00	0	00:00	00:00
8-Dec	0	00:00	00:00	0	00:00	00:00	20	08:41	09:01	0	00:00	00:00
9-Dec	0	00:00	00:00	0	00:00	00:00	20	08:41	09:01	0	00:00	00:00
10-Dec	0	00:00	00:00	0	00:00	00:00	20	08:42	09:02	0	00:00	00:00
11-Dec	0	00:00	00:00	0	00:00	00:00	21	08:42	09:03	0	00:00	00:00
12-Dec	0	00:00	00:00	0	00:00	00:00	21	08:42	09:03	0	00:00	00:00
13-Dec	0	00:00	00:00	0	00:00	00:00	21	08:43	09:04	0	00:00	00:00
14-Dec	0	00:00	00:00	0	00:00	00:00	22	08:43	09:05	0	00:00	00:00
15-Dec	0	00:00	00:00	0	00:00	00:00	22	08:43	09:05	0	00:00	00:00
16-Dec	0	00:00	00:00	0	00:00	00:00	22	08:44	09:06	0	00:00	00:00
17-Dec	0	00:00	00:00	0	00:00	00:00	21	08:45	09:06	0	00:00	00:00
18-Dec	0	00:00	00:00	0	00:00	00:00	22	08:45	09:07	0	00:00	00:00
19-Dec	0	00:00	00:00	0	00:00	00:00	21	08:46	09:07	0	00:00	00:00
20-Dec	0	00:00	00:00	0	00:00	00:00	22	08:46	09:08	0	00:00	00:00
21-Dec	0	00:00	00:00	0	00:00	00:00	21	08:47	09:08	0	00:00	00:00
22-Dec	0	00:00	00:00	0	00:00	00:00	22	08:47	09:09	0	00:00	00:00
23-Dec	0	00:00	00:00	0	00:00	00:00	21	08:48	09:09	0	00:00	00:00

24-Dec	0	00:00	00:00	0	00:00	00:00	22	08:48	09:10	0	00:00	00:00
25-Dec	0	00:00	00:00	0	00:00	00:00	22	08:48	09:10	0	00:00	00:00
26-Dec	0	00:00	00:00	0	00:00	00:00	22	08:49	09:11	0	00:00	00:00
27-Dec	0	00:00	00:00	0	00:00	00:00	22	08:49	09:11	0	00:00	00:00
28-Dec	0	00:00	00:00	0	00:00	00:00	21	08:50	09:11	0	00:00	00:00
29-Dec	0	00:00	00:00	0	00:00	00:00	22	08:50	09:12	0	00:00	00:00
30-Dec	0	00:00	00:00	0	00:00	00:00	21	08:51	09:12	0	00:00	00:00
31-Dec	0	00:00	00:00	0	00:00	00:00	20	08:52	09:12	0	00:00	00:00

Receptor: 1091

Calculation: Shadow Flicker

Rotor Orientation Type: SphereAroundRotorCentre

Timezone: CST (UTC-06:00) *Daylight savings time is not considered in the timestamps in this document

Summary of turbine results:

Turbine	Annual Hours (hh:mm)
68B	7:52

Astronomical Worst Case (hours): 8

Reduction Factor: 0.25

Expected Case (hours): 2

Summary of results per day: *Days with no shadow flicker events have been excluded from the table below

Turbine 68B

Day	Maximum Minutes	Start Time	End Time
1-Feb	3	17:15	17:18
2-Feb	7	17:13	17:20
3-Feb	10	17:12	17:22
4-Feb	11	17:12	17:23
5-Feb	14	17:11	17:25
6-Feb	15	17:11	17:26
7-Feb	18	17:10	17:28
8-Feb	20	17:10	17:30
9-Feb	21	17:10	17:31
10-Feb	21	17:11	17:32
11-Feb	21	17:11	17:32
12-Feb	20	17:11	17:31
13-Feb	19	17:12	17:31
14-Feb	16	17:13	17:29
15-Feb	13	17:15	17:28
16-Feb	7	17:18	17:25
24-Oct	8	16:47	16:55
25-Oct	13	16:45	16:58
26-Oct	16	16:43	16:59
27-Oct	18	16:42	17:00
28-Oct	20	16:41	17:01
29-Oct	21	16:40	17:01
30-Oct	22	16:40	17:02
31-Oct	21	16:40	17:01
1-Nov	19	16:40	16:59
2-Nov	17	16:40	16:57
3-Nov	16	16:40	16:56
4-Nov	13	16:41	16:54
5-Nov	12	16:41	16:53
6-Nov	10	16:42	16:52
7-Nov	7	16:43	16:50
8-Nov	4	16:45	16:49

Receptor: 1078

Calculation: Shadow Flicker

Rotor Orientation Type: SphereAroundRotorCentre

Timezone: CST (UTC-06:00) *Daylight savings time is not considered in the timestamps in this document

Summary of turbine results:

Turbine	Annual Hours (hh:mm)
68B	18:58

Astronomical Worst Case (hours): 19

Reduction Factor: 0.16

Expected Case (hours): 3

Summary of results per day: *Days with no shadow flicker events have been excluded from the table below

Turbine 68B

Day	Maximum		
	Minutes	Start Time	End Time
1-Jan	9	16:27	16:36
2-Jan	10	16:27	16:37
3-Jan	11	16:27	16:38
4-Jan	12	16:27	16:39
5-Jan	13	16:27	16:40
6-Jan	14	16:27	16:41
7-Jan	15	16:27	16:42
8-Jan	16	16:27	16:43
9-Jan	18	16:27	16:45
10-Jan	18	16:28	16:46
11-Jan	19	16:28	16:47
12-Jan	20	16:28	16:48
13-Jan	22	16:28	16:50
14-Jan	23	16:28	16:51
15-Jan	24	16:29	16:53
16-Jan	25	16:29	16:54
17-Jan	25	16:29	16:54
18-Jan	25	16:30	16:55
19-Jan	25	16:30	16:55
20-Jan	24	16:31	16:55
21-Jan	24	16:31	16:55
22-Jan	23	16:32	16:55
23-Jan	21	16:33	16:54
24-Jan	20	16:34	16:54
25-Jan	18	16:35	16:53
26-Jan	16	16:36	16:52
27-Jan	13	16:38	16:51
28-Jan	8	16:41	16:49
12-Nov	6	16:13	16:19
13-Nov	12	16:10	16:22
14-Nov	15	16:09	16:24
15-Nov	17	16:08	16:25
16-Nov	20	16:07	16:27
17-Nov	21	16:06	16:27
18-Nov	22	16:06	16:28
19-Nov	23	16:06	16:29
20-Nov	24	16:06	16:30
21-Nov	24	16:06	16:30
22-Nov	25	16:06	16:31
23-Nov	25	16:06	16:31
24-Nov	25	16:06	16:31
25-Nov	24	16:07	16:31
26-Nov	23	16:07	16:30
27-Nov	22	16:07	16:29
28-Nov	21	16:08	16:29
29-Nov	20	16:08	16:28
30-Nov	19	16:09	16:28
1-Dec	17	16:10	16:27
2-Dec	17	16:10	16:27

3-Dec	15	16:11	16:26
4-Dec	14	16:12	16:26
5-Dec	14	16:12	16:26
6-Dec	12	16:13	16:25
7-Dec	11	16:14	16:25
8-Dec	10	16:15	16:25
9-Dec	9	16:16	16:25
10-Dec	9	16:16	16:25
11-Dec	8	16:17	16:25
12-Dec	7	16:18	16:25
13-Dec	6	16:19	16:25
14-Dec	5	16:20	16:25
15-Dec	5	16:21	16:26
16-Dec	5	16:21	16:26
17-Dec	4	16:22	16:26
18-Dec	3	16:23	16:26
19-Dec	4	16:23	16:27
20-Dec	3	16:24	16:27
21-Dec	4	16:24	16:28
22-Dec	3	16:25	16:28
23-Dec	4	16:25	16:29
24-Dec	5	16:25	16:30
25-Dec	4	16:26	16:30
26-Dec	5	16:26	16:31
27-Dec	6	16:26	16:32
28-Dec	7	16:26	16:33
29-Dec	8	16:26	16:34
30-Dec	8	16:26	16:34
31-Dec	8	16:27	16:35

Receptor: 1804

Calculation: Shadow Flicker

Rotor Orientation Type: SphereAroundRotorCentre

Timezone: CST (UTC-06:00) *Daylight savings time is not considered in the timestamps in this document

Summary of turbine results:

Turbine	Annual Hours (hh:mm)
80	5:28

Astronomical Worst Case (hours): 5

Reduction Factor: 0.2

Expected Case (hours): 1

Summary of results per day: *Days with no shadow flicker events have been excluded from the table below

Turbine 80

Day	Maximum Minutes	Start Time	End Time
12-Feb	2	17:34	17:36
13-Feb	6	17:32	17:38
14-Feb	8	17:31	17:39
15-Feb	11	17:30	17:41
16-Feb	13	17:29	17:42
17-Feb	15	17:29	17:44
18-Feb	16	17:29	17:45
19-Feb	18	17:29	17:47
20-Feb	19	17:29	17:48
21-Feb	18	17:29	17:47
22-Feb	16	17:30	17:46
23-Feb	13	17:31	17:44
24-Feb	8	17:34	17:42
16-Oct	10	17:05	17:15
17-Oct	14	17:03	17:17
18-Oct	16	17:02	17:18
19-Oct	18	17:00	17:18
20-Oct	19	17:00	17:19
21-Oct	18	16:59	17:17
22-Oct	17	16:59	17:16
23-Oct	15	16:59	17:14
24-Oct	13	16:59	17:12
25-Oct	10	17:00	17:10
26-Oct	9	17:00	17:09
27-Oct	5	17:02	17:07
28-Oct	2	17:03	17:05

Receptor: 1817

Calculation: Shadow Flicker

Rotor Orientation Type: SphereAroundRotorCentre

Timezone: CST (UTC-06:00) *Daylight savings time is not considered in the timestamps in this document

Summary of turbine results:

Turbine	Annual Hours (hh:mm)
80	9:22

Astronomical Worst Case (hours): 9

Reduction Factor: 0.33

Expected Case (hours): 3

Summary of results per day: *Days with no shadow flicker events have been excluded from the table below

Turbine 80

Day	Maximum Minutes	Start Time	End Time
1-Apr	5	18:41	18:46
2-Apr	10	18:38	18:48
3-Apr	12	18:37	18:49
4-Apr	15	18:35	18:50
5-Apr	18	18:34	18:52
6-Apr	20	18:33	18:53
7-Apr	21	18:33	18:54
8-Apr	24	18:32	18:56
9-Apr	24	18:32	18:56
10-Apr	24	18:32	18:56
11-Apr	23	18:32	18:55
12-Apr	22	18:32	18:54
13-Apr	20	18:33	18:53
14-Apr	18	18:34	18:52
15-Apr	15	18:35	18:50
16-Apr	10	18:37	18:47
24-Aug	10	18:40	18:50
25-Aug	15	18:37	18:52
26-Aug	19	18:35	18:54
27-Aug	20	18:34	18:54
28-Aug	22	18:33	18:55
29-Aug	23	18:32	18:55
30-Aug	24	18:31	18:55
31-Aug	24	18:31	18:55
1-Sep	24	18:30	18:54
2-Sep	22	18:30	18:52
3-Sep	20	18:30	18:50
4-Sep	18	18:30	18:48
5-Sep	15	18:31	18:46
6-Sep	12	18:32	18:44
7-Sep	9	18:33	18:42
8-Sep	5	18:35	18:40

Receptor: 1920
 Calculation: Shadow Flicker
 Rotor Orientation Type: SphereAroundRotorCentre
 Timezone: CST (UTC-06:00) *Daylight savings time is not considered in the timestamps in this document

Summary of turbine results:

Turbine	Annual Hours (hh:mm)
76	9:31

Astronomical Worst Case (hours): 10
 Reduction Factor: 0.1
 Expected Case (hours): 1

Summary of results per day: *Days with no shadow flicker events have been excluded from the table below

Turbine	76		
Day	Maximum Minutes	Start Time	End Time
1-Jan	16	15:24	15:40
2-Jan	15	15:25	15:40
3-Jan	13	15:26	15:39
4-Jan	10	15:28	15:38
5-Jan	4	15:32	15:36
6-Dec	8	15:16	15:24
7-Dec	12	15:14	15:26
8-Dec	14	15:14	15:28
9-Dec	16	15:13	15:29
10-Dec	17	15:13	15:30
11-Dec	18	15:13	15:31
12-Dec	19	15:13	15:32
13-Dec	20	15:13	15:33
14-Dec	21	15:13	15:34
15-Dec	22	15:13	15:35
16-Dec	23	15:13	15:36
17-Dec	23	15:13	15:36
18-Dec	23	15:14	15:37
19-Dec	23	15:14	15:37
20-Dec	23	15:15	15:38
21-Dec	23	15:15	15:38
22-Dec	23	15:16	15:39
23-Dec	23	15:16	15:39
24-Dec	23	15:17	15:40
25-Dec	22	15:18	15:40
26-Dec	22	15:18	15:40
27-Dec	21	15:19	15:40
28-Dec	20	15:20	15:40
29-Dec	19	15:21	15:40
30-Dec	18	15:22	15:40
31-Dec	17	15:23	15:40

Receptor: 1922
 Calculation: Shadow Flicker
 Rotor Orientation Type: SphereAroundRotorCentre
 Timezone: CST (UTC-06:00) *Daylight savings time is not considered in the timestamps in this document

Summary of turbine results:

Turbine	Annual Hours (hh:mm)
81	31:30

Astronomical Worst Case (hours): 32
 Reduction Factor: 0.25
 Expected Case (hours): 8

Summary of results per day: *Days with no shadow flicker events have been excluded from the table below

Turbine 81

Day	Maximum		
	Minutes	Start Time	End Time
6-Feb	6	08:20	08:26
7-Feb	11	08:18	08:29
8-Feb	14	08:17	08:31
9-Feb	18	08:15	08:33
10-Feb	21	08:14	08:35
11-Feb	24	08:12	08:36
12-Feb	26	08:11	08:37
13-Feb	29	08:09	08:38
14-Feb	31	08:08	08:39
15-Feb	33	08:06	08:39
16-Feb	36	08:04	08:40
17-Feb	37	08:03	08:40
18-Feb	40	08:01	08:41
19-Feb	42	07:59	08:41
20-Feb	44	07:57	08:41
21-Feb	44	07:57	08:41
22-Feb	44	07:57	08:41
23-Feb	43	07:57	08:40
24-Feb	43	07:57	08:40
25-Feb	42	07:57	08:39
26-Feb	42	07:57	08:39
27-Feb	40	07:58	08:38
28-Feb	39	07:58	08:37
29-Feb	37	07:59	08:36
1-Mar	35	08:00	08:35
2-Mar	32	08:01	08:33
3-Mar	29	08:03	08:32
4-Mar	25	08:04	08:29
5-Mar	19	08:07	08:26
6-Mar	12	08:10	08:22
5-Oct	7	07:50	07:57
6-Oct	17	07:45	08:02
7-Oct	24	07:41	08:05
8-Oct	27	07:39	08:06
9-Oct	31	07:37	08:08
10-Oct	34	07:35	08:09
11-Oct	36	07:34	08:10
12-Oct	38	07:33	08:11
13-Oct	39	07:32	08:11
14-Oct	41	07:31	08:12
15-Oct	42	07:30	08:12
16-Oct	43	07:29	08:12
17-Oct	43	07:29	08:12
18-Oct	44	07:28	08:12
19-Oct	44	07:28	08:12
20-Oct	44	07:28	08:12
21-Oct	43	07:29	08:12
22-Oct	41	07:30	08:11
23-Oct	39	07:32	08:11

24-Oct	37	07:33	08:10
25-Oct	35	07:35	08:10
26-Oct	33	07:36	08:09
27-Oct	30	07:38	08:08
28-Oct	28	07:39	08:07
29-Oct	25	07:41	08:06
30-Oct	23	07:42	08:05
31-Oct	20	07:44	08:04
1-Nov	17	07:45	08:02
2-Nov	13	07:47	08:00
3-Nov	10	07:48	07:58
4-Nov	4	07:50	07:54

Receptor: 1934

Calculation: Shadow Flicker

Rotor Orientation Type: SphereAroundRotorCentre

Timezone: CST (UTC-06:00) *Daylight savings time is not considered in the timestamps in this document

Summary of turbine results:

Turbine	Annual Hours (hh:mm)
81	8:10

Astronomical Worst Case (hours): 8

Reduction Factor: 0.12

Expected Case (hours): 1

Summary of results per day: *Days with no shadow flicker events have been excluded from the table below

Turbine 81

Day	Maximum		
	Minutes	Start Time	End Time
5-Jun	3	19:55	19:58
6-Jun	10	19:52	20:02
7-Jun	12	19:50	20:02
8-Jun	14	19:49	20:03
9-Jun	16	19:48	20:04
10-Jun	16	19:48	20:04
11-Jun	18	19:47	20:05
12-Jun	18	19:47	20:05
13-Jun	19	19:47	20:06
14-Jun	19	19:47	20:06
15-Jun	19	19:47	20:06
16-Jun	20	19:47	20:07
17-Jun	20	19:47	20:07
18-Jun	20	19:47	20:07
19-Jun	21	19:47	20:08
20-Jun	21	19:47	20:08
21-Jun	21	19:47	20:08
22-Jun	20	19:48	20:08
23-Jun	20	19:48	20:08
24-Jun	19	19:49	20:08
25-Jun	19	19:49	20:08
26-Jun	18	19:50	20:08
27-Jun	18	19:50	20:08
28-Jun	17	19:51	20:08
29-Jun	16	19:52	20:08
30-Jun	15	19:53	20:08
1-Jul	14	19:54	20:08
2-Jul	13	19:55	20:08
3-Jul	10	19:57	20:07
4-Jul	5	20:00	20:05

Receptor: 2001

Calculation: Shadow Flicker

Rotor Orientation Type: SphereAroundRotorCentre

Timezone: CST (UTC-06:00) *Daylight savings time is not considered in the timestamps in this document

Summary of turbine results:

Turbine	Annual Hours (hh:mm)
114	11:46
115	13:12

Astronomical Worst Case (hours): 25

Reduction Factor: 0.24

Expected Case (hours): 6

Summary of results per day: *Days with no shadow flicker events have been excluded from the table below

Turbine	114			115		
Day	Maximum Minutes	Start Time	End Time	Maximum Minutes	Start Time	End Time
20-Feb	4	17:44	17:48	0	00:00	00:00
21-Feb	8	17:42	17:50	0	00:00	00:00
22-Feb	12	17:40	17:52	0	00:00	00:00
23-Feb	15	17:38	17:53	0	00:00	00:00
24-Feb	18	17:37	17:55	0	00:00	00:00
25-Feb	20	17:36	17:56	0	00:00	00:00
26-Feb	22	17:36	17:58	0	00:00	00:00
27-Feb	24	17:35	17:59	0	00:00	00:00
28-Feb	26	17:35	18:01	0	00:00	00:00
29-Feb	28	17:34	18:02	0	00:00	00:00
1-Mar	28	17:34	18:02	0	00:00	00:00
2-Mar	26	17:35	18:01	0	00:00	00:00
3-Mar	26	17:35	18:01	0	00:00	00:00
4-Mar	25	17:35	18:00	0	00:00	00:00
5-Mar	23	17:36	17:59	0	00:00	00:00
6-Mar	20	17:37	17:57	0	00:00	00:00
7-Mar	16	17:39	17:55	0	00:00	00:00
8-Mar	10	17:42	17:52	0	00:00	00:00
30-May	0	00:00	00:00	6	19:50	19:56
31-May	0	00:00	00:00	9	19:48	19:57
1-Jun	0	00:00	00:00	11	19:47	19:58
2-Jun	0	00:00	00:00	13	19:46	19:59
3-Jun	0	00:00	00:00	15	19:45	20:00
4-Jun	0	00:00	00:00	15	19:45	20:00
5-Jun	0	00:00	00:00	17	19:44	20:01
6-Jun	0	00:00	00:00	18	19:44	20:02
7-Jun	0	00:00	00:00	19	19:43	20:02
8-Jun	0	00:00	00:00	20	19:43	20:03
9-Jun	0	00:00	00:00	21	19:43	20:04
10-Jun	0	00:00	00:00	21	19:43	20:04
11-Jun	0	00:00	00:00	22	19:43	20:05
12-Jun	0	00:00	00:00	22	19:43	20:05
13-Jun	0	00:00	00:00	23	19:43	20:06
14-Jun	0	00:00	00:00	23	19:43	20:06
15-Jun	0	00:00	00:00	23	19:43	20:06
16-Jun	0	00:00	00:00	24	19:43	20:07
17-Jun	0	00:00	00:00	24	19:43	20:07
18-Jun	0	00:00	00:00	24	19:43	20:07
19-Jun	0	00:00	00:00	24	19:44	20:08
20-Jun	0	00:00	00:00	24	19:44	20:08
21-Jun	0	00:00	00:00	24	19:44	20:08
22-Jun	0	00:00	00:00	24	19:44	20:08
23-Jun	0	00:00	00:00	23	19:45	20:08
24-Jun	0	00:00	00:00	23	19:45	20:08
25-Jun	0	00:00	00:00	23	19:45	20:08
26-Jun	0	00:00	00:00	22	19:46	20:08
27-Jun	0	00:00	00:00	22	19:46	20:08
28-Jun	0	00:00	00:00	22	19:46	20:08
29-Jun	0	00:00	00:00	21	19:47	20:08

30-Jun	0	00:00	00:00	21	19:47	20:08
1-Jul	0	00:00	00:00	20	19:48	20:08
2-Jul	0	00:00	00:00	19	19:49	20:08
3-Jul	0	00:00	00:00	18	19:49	20:07
4-Jul	0	00:00	00:00	17	19:50	20:07
5-Jul	0	00:00	00:00	16	19:51	20:07
6-Jul	0	00:00	00:00	14	19:52	20:06
7-Jul	0	00:00	00:00	13	19:53	20:06
8-Jul	0	00:00	00:00	11	19:54	20:05
9-Jul	0	00:00	00:00	10	19:55	20:05
10-Jul	0	00:00	00:00	7	19:57	20:04
11-Jul	0	00:00	00:00	4	20:00	20:04
2-Oct	3	17:24	17:27	0	00:00	00:00
3-Oct	13	17:18	17:31	0	00:00	00:00
4-Oct	17	17:16	17:33	0	00:00	00:00
5-Oct	21	17:14	17:35	0	00:00	00:00
6-Oct	24	17:12	17:36	0	00:00	00:00
7-Oct	25	17:11	17:36	0	00:00	00:00
8-Oct	27	17:10	17:37	0	00:00	00:00
9-Oct	28	17:09	17:37	0	00:00	00:00
10-Oct	28	17:09	17:37	0	00:00	00:00
11-Oct	27	17:09	17:36	0	00:00	00:00
12-Oct	26	17:08	17:34	0	00:00	00:00
13-Oct	24	17:08	17:32	0	00:00	00:00
14-Oct	21	17:09	17:30	0	00:00	00:00
15-Oct	19	17:09	17:28	0	00:00	00:00
16-Oct	16	17:10	17:26	0	00:00	00:00
17-Oct	14	17:10	17:24	0	00:00	00:00
18-Oct	11	17:12	17:23	0	00:00	00:00
19-Oct	8	17:13	17:21	0	00:00	00:00
20-Oct	3	17:16	17:19	0	00:00	00:00

Receptor: 2002

Calculation: Shadow Flicker

Rotor Orientation Type: SphereAroundRotorCentre

Timezone: CST (UTC-06:00) *Daylight savings time is not considered in the timestamps in this document

Summary of turbine results:

Turbine	Annual Hours (hh:mm)
113	6:27
114	22:00

Astronomical Worst Case (hours): 23

Reduction Factor: 0.22

Expected Case (hours): 5

Summary of results per day: *Days with no shadow flicker events have been excluded from the table below

Turbine	113	114
---------	-----	-----

Day	Turbine 113			Turbine 114		
	Maximum Minutes	Start Time	End Time	Maximum Minutes	Start Time	End Time
16-Feb	0	00:00	00:00	1	17:41	17:42
17-Feb	0	00:00	00:00	9	17:35	17:44
18-Feb	0	00:00	00:00	13	17:32	17:45
19-Feb	0	00:00	00:00	17	17:30	17:47
20-Feb	0	00:00	00:00	19	17:29	17:48
21-Feb	2	17:48	17:50	23	17:27	17:50
22-Feb	6	17:46	17:52	26	17:26	17:52
23-Feb	8	17:45	17:53	28	17:25	17:53
24-Feb	11	17:44	17:55	31	17:24	17:55
25-Feb	13	17:43	17:56	32	17:24	17:56
26-Feb	16	17:42	17:58	35	17:23	17:58
27-Feb	17	17:42	17:59	36	17:23	17:59
28-Feb	19	17:42	18:01	37	17:23	18:00
29-Feb	20	17:42	18:02	38	17:22	18:00
1-Mar	22	17:42	18:04	37	17:22	17:59
2-Mar	20	17:43	18:03	37	17:22	17:59
3-Mar	17	17:44	18:01	36	17:22	17:58
4-Mar	15	17:45	18:00	34	17:23	17:57
5-Mar	9	17:48	17:57	33	17:23	17:56
6-Mar	0	00:00	00:00	31	17:24	17:55
7-Mar	0	00:00	00:00	29	17:25	17:54
8-Mar	0	00:00	00:00	26	17:26	17:52
9-Mar	0	00:00	00:00	22	17:28	17:50
10-Mar	0	00:00	00:00	18	17:30	17:48
11-Mar	0	00:00	00:00	10	17:33	17:43
30-Sep	0	00:00	00:00	15	17:11	17:26
1-Oct	0	00:00	00:00	20	17:08	17:28
2-Oct	0	00:00	00:00	25	17:05	17:30
3-Oct	0	00:00	00:00	27	17:04	17:31
4-Oct	0	00:00	00:00	30	17:02	17:32
5-Oct	0	00:00	00:00	32	17:01	17:33
6-Oct	12	17:23	17:35	33	17:00	17:33
7-Oct	15	17:21	17:36	35	16:59	17:34
8-Oct	18	17:19	17:37	36	16:58	17:34
9-Oct	20	17:18	17:38	37	16:57	17:34
10-Oct	21	17:17	17:38	37	16:57	17:34
11-Oct	20	17:16	17:36	37	16:57	17:34
12-Oct	18	17:16	17:34	37	16:56	17:33
13-Oct	17	17:15	17:32	36	16:56	17:32
14-Oct	15	17:15	17:30	34	16:56	17:30
15-Oct	12	17:16	17:28	32	16:56	17:28
16-Oct	10	17:16	17:26	29	16:57	17:26
17-Oct	7	17:17	17:24	27	16:57	17:24
18-Oct	5	17:18	17:23	25	16:58	17:23
19-Oct	2	17:19	17:21	22	16:59	17:21
20-Oct	0	00:00	00:00	19	17:00	17:19
21-Oct	0	00:00	00:00	16	17:01	17:17
22-Oct	0	00:00	00:00	13	17:03	17:16
23-Oct	0	00:00	00:00	8	17:06	17:14

Receptor: 2003

Calculation: Shadow Flicker

Rotor Orientation Type: SphereAroundRotorCentre

Timezone: CST (UTC-06:00) *Daylight savings time is not considered in the timestamps in this document

Summary of turbine results:

Turbine	Annual Hours (hh:mm)
113	5:37
114	17:42

Astronomical Worst Case (hours): 18

Reduction Factor: 0.22

Expected Case (hours): 4

Summary of results per day: *Days with no shadow flicker events have been excluded from the table below

Turbine 113 114

Day	Maximum			Maximum		
	Minutes	Start Time	End Time	Minutes	Start Time	End Time
1-Mar	2	18:02	18:04	0	00:00	00:00
2-Mar	5	18:00	18:05	0	00:00	00:00
3-Mar	8	17:58	18:06	9	17:57	18:06
4-Mar	11	17:57	18:08	14	17:54	18:08
5-Mar	13	17:56	18:09	17	17:52	18:09
6-Mar	15	17:56	18:11	20	17:51	18:11
7-Mar	16	17:56	18:12	23	17:49	18:12
8-Mar	19	17:55	18:14	26	17:48	18:14
9-Mar	19	17:56	18:15	28	17:47	18:15
10-Mar	19	17:56	18:15	31	17:46	18:17
11-Mar	17	17:57	18:14	32	17:46	18:18
12-Mar	14	17:58	18:12	34	17:45	18:19
13-Mar	9	18:00	18:09	34	17:45	18:19
14-Mar	0	00:00	00:00	33	17:45	18:18
15-Mar	0	00:00	00:00	33	17:45	18:18
16-Mar	0	00:00	00:00	32	17:45	18:17
17-Mar	0	00:00	00:00	31	17:45	18:16
18-Mar	0	00:00	00:00	29	17:46	18:15
19-Mar	0	00:00	00:00	28	17:46	18:14
20-Mar	0	00:00	00:00	25	17:47	18:12
21-Mar	0	00:00	00:00	21	17:49	18:10
22-Mar	0	00:00	00:00	17	17:51	18:08
23-Mar	0	00:00	00:00	10	17:54	18:04
17-Sep	0	00:00	00:00	6	17:44	17:50
18-Sep	0	00:00	00:00	15	17:39	17:54
19-Sep	0	00:00	00:00	20	17:36	17:56
20-Sep	0	00:00	00:00	24	17:34	17:58
21-Sep	0	00:00	00:00	27	17:32	17:59
22-Sep	0	00:00	00:00	28	17:31	17:59
23-Sep	0	00:00	00:00	31	17:29	18:00
24-Sep	0	00:00	00:00	32	17:28	18:00
25-Sep	0	00:00	00:00	32	17:28	18:00
26-Sep	0	00:00	00:00	33	17:27	18:00
27-Sep	6	17:43	17:49	34	17:26	18:00
28-Sep	12	17:40	17:52	34	17:26	18:00
29-Sep	16	17:38	17:54	33	17:26	17:59
30-Sep	18	17:36	17:54	31	17:26	17:57
1-Oct	20	17:35	17:55	29	17:26	17:55
2-Oct	19	17:34	17:53	27	17:26	17:53
3-Oct	17	17:34	17:51	24	17:27	17:51
4-Oct	16	17:33	17:49	22	17:27	17:49
5-Oct	14	17:33	17:47	19	17:28	17:47
6-Oct	12	17:33	17:45	15	17:30	17:45
7-Oct	9	17:34	17:43	12	17:31	17:43
8-Oct	7	17:34	17:41	7	17:34	17:41
9-Oct	4	17:35	17:39	0	00:00	00:00
10-Oct	1	17:37	17:38	0	00:00	00:00

Receptor: 2004

Calculation: Shadow Flicker

Rotor Orientation Type: SphereAroundRotorCentre

Timezone: CST (UTC-06:00) *Daylight savings time is not considered in the timestamps in this document

Summary of turbine results:

Turbine	Annual Hours (hh:mm)
113	5:58
114	19:37

Astronomical Worst Case (hours): 26

Reduction Factor: 0.27

Expected Case (hours): 7

Summary of results per day: *Days with no shadow flicker events have been excluded from the table below

Turbine	113	114				
Day	Maximum Minutes	Start Time	End Time	Maximum Minutes	Start Time	End Time
21-Mar	3	18:29	18:32	0	00:00	00:00
22-Mar	6	18:27	18:33	0	00:00	00:00
23-Mar	9	18:25	18:34	0	00:00	00:00
24-Mar	12	18:24	18:36	0	00:00	00:00
25-Mar	14	18:23	18:37	0	00:00	00:00
26-Mar	15	18:23	18:38	0	00:00	00:00
27-Mar	18	18:22	18:40	0	00:00	00:00
28-Mar	19	18:22	18:41	0	00:00	00:00
29-Mar	20	18:22	18:42	0	00:00	00:00
30-Mar	19	18:23	18:42	0	00:00	00:00
31-Mar	18	18:23	18:41	0	00:00	00:00
1-Apr	14	18:25	18:39	0	00:00	00:00
2-Apr	9	18:27	18:36	0	00:00	00:00
3-Apr	0	00:00	00:00	9	18:40	18:49
4-Apr	0	00:00	00:00	13	18:37	18:50
5-Apr	0	00:00	00:00	18	18:34	18:52
6-Apr	0	00:00	00:00	20	18:33	18:53
7-Apr	0	00:00	00:00	23	18:31	18:54
8-Apr	0	00:00	00:00	26	18:30	18:56
9-Apr	0	00:00	00:00	28	18:29	18:57
10-Apr	0	00:00	00:00	30	18:28	18:58
11-Apr	0	00:00	00:00	31	18:28	18:59
12-Apr	0	00:00	00:00	34	18:27	19:01
13-Apr	0	00:00	00:00	34	18:27	19:01
14-Apr	0	00:00	00:00	33	18:27	19:00
15-Apr	0	00:00	00:00	34	18:26	19:00
16-Apr	0	00:00	00:00	33	18:26	18:59
17-Apr	0	00:00	00:00	32	18:27	18:59
18-Apr	0	00:00	00:00	31	18:27	18:58
19-Apr	0	00:00	00:00	30	18:27	18:57
20-Apr	0	00:00	00:00	28	18:28	18:56
21-Apr	0	00:00	00:00	26	18:29	18:55
22-Apr	0	00:00	00:00	24	18:30	18:54
23-Apr	0	00:00	00:00	21	18:31	18:52
24-Apr	0	00:00	00:00	17	18:33	18:50
25-Apr	0	00:00	00:00	11	18:36	18:47
15-Aug	0	00:00	00:00	13	18:41	18:54
16-Aug	0	00:00	00:00	18	18:38	18:56
17-Aug	0	00:00	00:00	22	18:36	18:58
18-Aug	0	00:00	00:00	24	18:35	18:59
19-Aug	0	00:00	00:00	27	18:33	19:00
20-Aug	0	00:00	00:00	29	18:32	19:01
21-Aug	0	00:00	00:00	30	18:31	19:01
22-Aug	0	00:00	00:00	32	18:30	19:02
23-Aug	0	00:00	00:00	32	18:30	19:02
24-Aug	0	00:00	00:00	33	18:29	19:02
25-Aug	0	00:00	00:00	34	18:28	19:02
26-Aug	0	00:00	00:00	34	18:28	19:02
27-Aug	0	00:00	00:00	33	18:28	19:01

28-Aug	0	00:00	00:00	33	18:28	19:01
29-Aug	0	00:00	00:00	32	18:27	18:59
30-Aug	0	00:00	00:00	29	18:28	18:57
31-Aug	0	00:00	00:00	27	18:28	18:55
1-Sep	0	00:00	00:00	26	18:28	18:54
2-Sep	0	00:00	00:00	23	18:29	18:52
3-Sep	0	00:00	00:00	20	18:30	18:50
4-Sep	0	00:00	00:00	17	18:31	18:48
5-Sep	0	00:00	00:00	14	18:32	18:46
6-Sep	0	00:00	00:00	9	18:35	18:44
7-Sep	10	18:21	18:31	0	00:00	00:00
8-Sep	14	18:19	18:33	0	00:00	00:00
9-Sep	17	18:17	18:34	0	00:00	00:00
10-Sep	19	18:15	18:34	0	00:00	00:00
11-Sep	20	18:14	18:34	0	00:00	00:00
12-Sep	20	18:13	18:33	0	00:00	00:00
13-Sep	18	18:13	18:31	0	00:00	00:00
14-Sep	16	18:13	18:29	0	00:00	00:00
15-Sep	15	18:12	18:27	0	00:00	00:00
16-Sep	12	18:13	18:25	0	00:00	00:00
17-Sep	10	18:13	18:23	0	00:00	00:00
18-Sep	7	18:14	18:21	0	00:00	00:00
19-Sep	4	18:15	18:19	0	00:00	00:00

Receptor: 2652
 Calculation: Shadow Flicker
 Rotor Orientation Type: SphereAroundRotorCentre
 Timezone: CST (UTC-06:00) *Daylight savings time is not considered in the timestamps in this document

Summary of turbine results:

Turbine	Annual Hours (hh:mm)
92	5:39

Astronomical Worst Case (hours): 6
 Reduction Factor: 0.33
 Expected Case (hours): 2

Summary of results per day: *Days with no shadow flicker events have been excluded from the table below
 Turbine 92

Day	Maximum Minutes	Start Time	End Time
7-Apr	2	06:28	06:30
8-Apr	5	06:26	06:31
9-Apr	8	06:24	06:32
10-Apr	9	06:23	06:32
11-Apr	11	06:21	06:32
12-Apr	13	06:19	06:32
13-Apr	15	06:17	06:32
14-Apr	17	06:15	06:32
15-Apr	17	06:14	06:31
16-Apr	18	06:12	06:30
17-Apr	18	06:11	06:29
18-Apr	16	06:12	06:28
19-Apr	13	06:13	06:26
20-Apr	7	06:16	06:23
21-Aug	8	06:20	06:28
22-Aug	13	06:17	06:30
23-Aug	16	06:15	06:31
24-Aug	18	06:14	06:32
25-Aug	19	06:14	06:33
26-Aug	17	06:16	06:33
27-Aug	16	06:17	06:33
28-Aug	15	06:18	06:33
29-Aug	13	06:19	06:32
30-Aug	12	06:20	06:32
31-Aug	9	06:22	06:31
1-Sep	7	06:23	06:30
2-Sep	5	06:24	06:29
3-Sep	2	06:25	06:27



About DNV

DNV is a global quality assurance and risk management company. Driven by our purpose of safeguarding life, property and the environment, we enable our customers to advance the safety and sustainability of their business. We provide classification, technical assurance, software and independent expert advisory services to the maritime, oil & gas, power and renewables industries. We also provide certification, supply chain and data management services to customers across a wide range of industries. Operating in more than 100 countries, our experts are dedicated to helping customers make the world safer, smarter and greener.