

# 2024 Harvest: Sunflowers

Field: North Hill East Side



Custom | Voigt

Start: Oct 16, 2024 4:29 PM  
End: Oct 28, 2024 11:41 AM

Operator Name: John

## Work Totals

Area Harvested: 38.2 ac  
Total Yield: 1,809 bu  
Wet Weight: 1,370.3 lb/ac

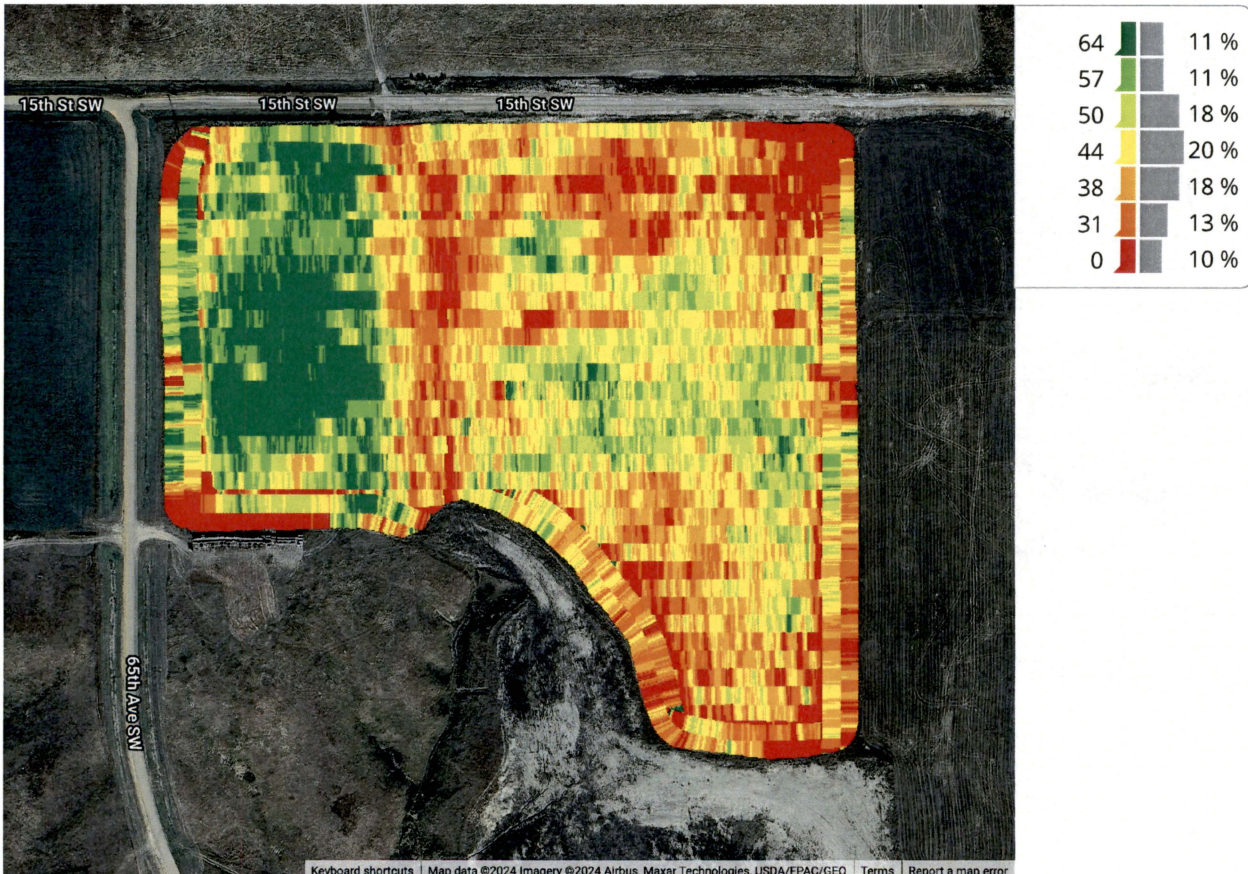
Yield: 47 bu/ac  
Moisture: 7.9 %  
Total Wet Weight: 52,402 lb

## Performance

Speed: 4.2 mi/hr  
Harvest Time: 1 hr 58 min  
Throughput (Dry): 903 bu/hr  
Fuel Efficiency: 57.7 bu/gal  
Fuel Rate (Time): 15.7 gal/hr

Productivity: 18.2 ac/hr  
Total Fuel: 31 gal  
Throughput (Wet): 26,167.2 lb/hr  
Fuel Rate (Area): 0.8 gal/ac

## Map: Yield



## Equipment

1H05780SPPT825626- Dan: 1H05780SPPT825626

## Varieties

CP450E, CP455E H.O.S.S.

77 RC-24-244 Filed 12/18/2024 Pages: 15  
Exhibit LO5 - Productivity Map - October 2024

Hope Hogan, ALJ - Office of Administrative Hearings

65 RC-24-245 Filed 12/18/2024 Pages: 15  
Exhibit LO5 - Productivity Map - October 2024

Hope Hogan, ALJ - Office of Administrative Hearings



## 2024 Harvest: Corn

Field: North Hill

John Weinand | Voigt, Casey

Start: Oct 5, 2024 1:32 PM

End: Oct 5, 2024 3:21 PM

Operator Name: John



### Work Totals

Area Harvested: 34.9 ac

Total Yield: 3,852 bu

Wet Weight: 6,181.3 lb/ac

Yield: 110 bu/ac

Moisture: 13.4 %

Total Wet Weight: 215,858 lb

### Performance

Speed: 4.5 mi/hr

Harvest Time: 1 hr 39 min

Throughput (Dry): 2,473 bu/hr

Fuel Efficiency: 144 bu/gal

Fuel Rate (Time): 17.2 gal/hr

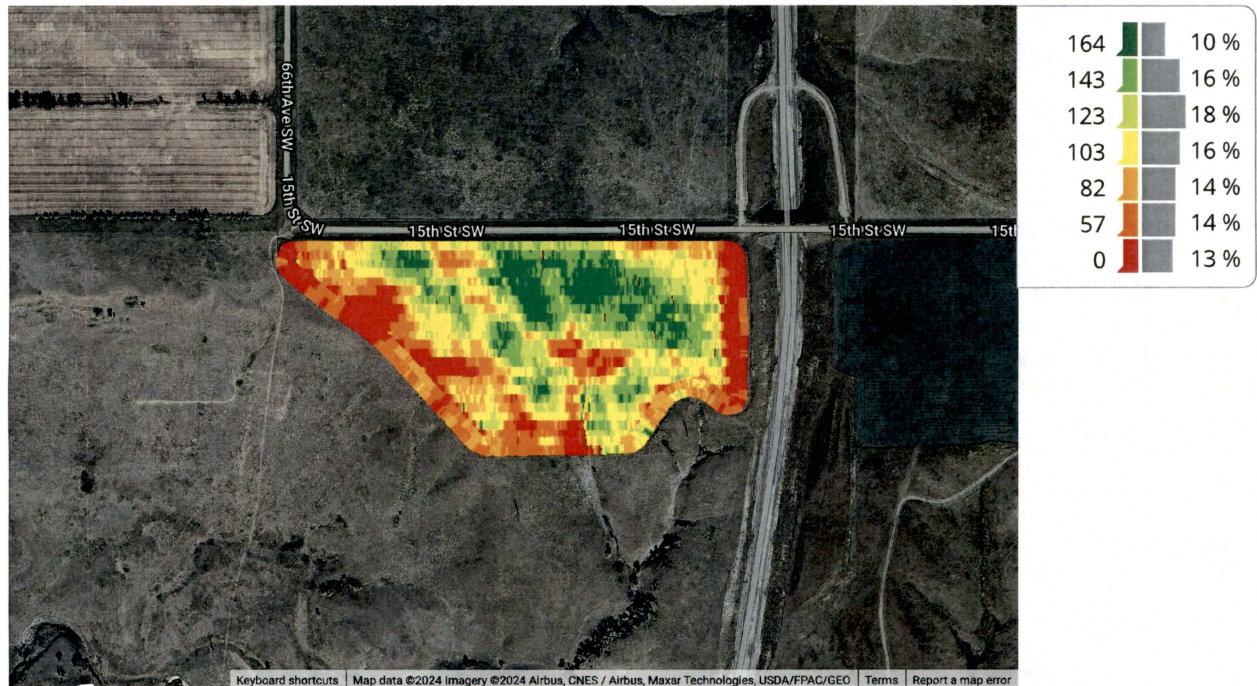
Productivity: 20.4 ac/hr

Total Fuel: 28.4 gal

Throughput (Wet): 138,586.8 lb/hr

Fuel Rate (Area): 0.8 gal/ac

### Map: Yield



### Equipment

1H0S780SPPT825626- Dan: 1H0S780SPPT825626

### Varieties

---

12%CP2585/44%CP2288/44%NK8005

CP2288/NK8005

# 2023 Harvest: Wheat (Hard Red Winter)



Field: North Hill

John Weinand | Voigt, Casey

Start: Jul 25, 2023 2:39 PM

End: Jul 25, 2023 3:47 PM

## Work Totals

Area Harvested: 34.8 ac

Total Yield: 1,331 bu

Wet Weight: 2,365.8 lb/ac

Yield: 38 bu/ac

Moisture: 15.6 %

Total Wet Weight: 82,368 lb

## Performance

Speed: 5 mi/hr

Harvest Time: 1 hr 33 min

Throughput (Dry): 854 bu/hr

Fuel Efficiency: 40.7 bu/gal

Fuel Rate (Time): 21 gal/hr

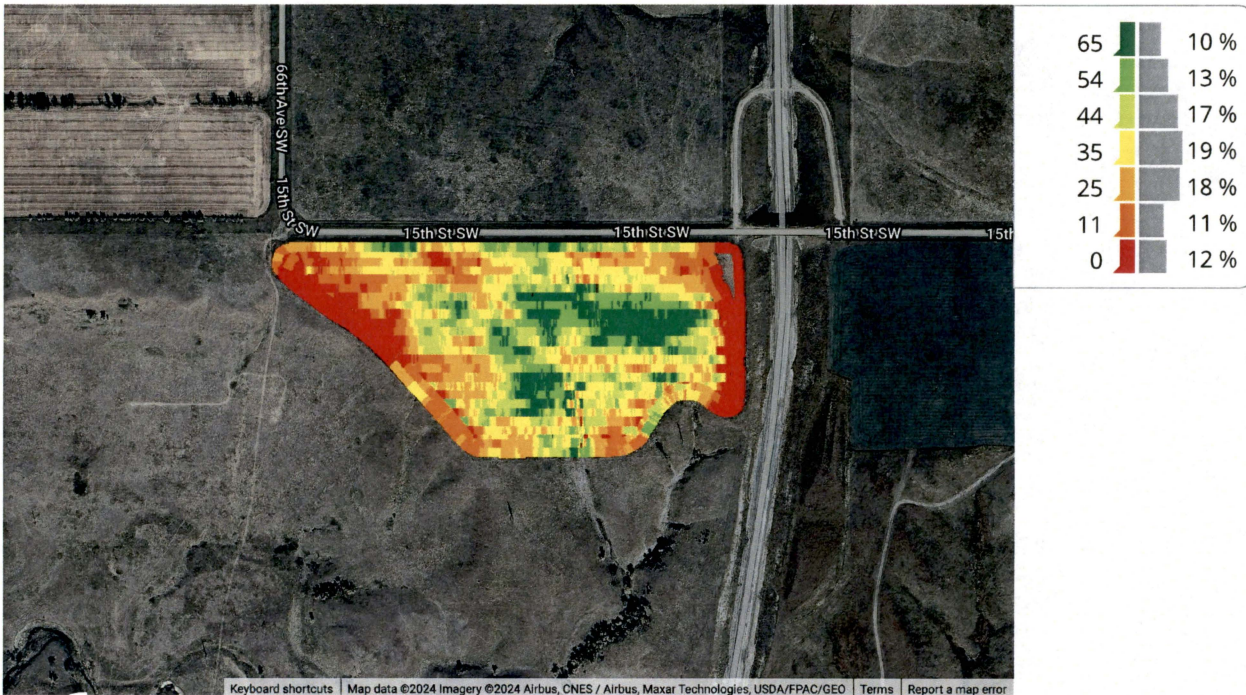
Productivity: 21.9 ac/hr

Total Fuel: 32.7 gal

Throughput (Wet): 52,827.6 lb/hr

Fuel Rate (Area): 0.9 gal/ac

## Map: Yield



## Equipment

1H0S780STMT815592: 1H0S780STMT815592

1H0S780STMT815642: 1H0S780STMT815642

## Varieties

---

SY Wolf

## 2022 Harvest: Canola

Field: North Hill

John Weinand | Voigt, Casey

Start: Aug 11, 2022 4:12 PM

End: Aug 11, 2022 6:42 PM



### Work Totals

Area Harvested: 35.2 ac

Total Yield: 1,491 bu

Wet Weight: 2,204.7 lb/ac

Yield: 42 bu/ac

Moisture: 7.3 %

Total Wet Weight: 77,589 lb

### Performance

Speed: 3.6 mi/hr

Harvest Time: 2 hr 8 min

Throughput (Dry): 689 bu/hr

Fuel Efficiency: 32.8 bu/gal

Fuel Rate (Time): 21 gal/hr

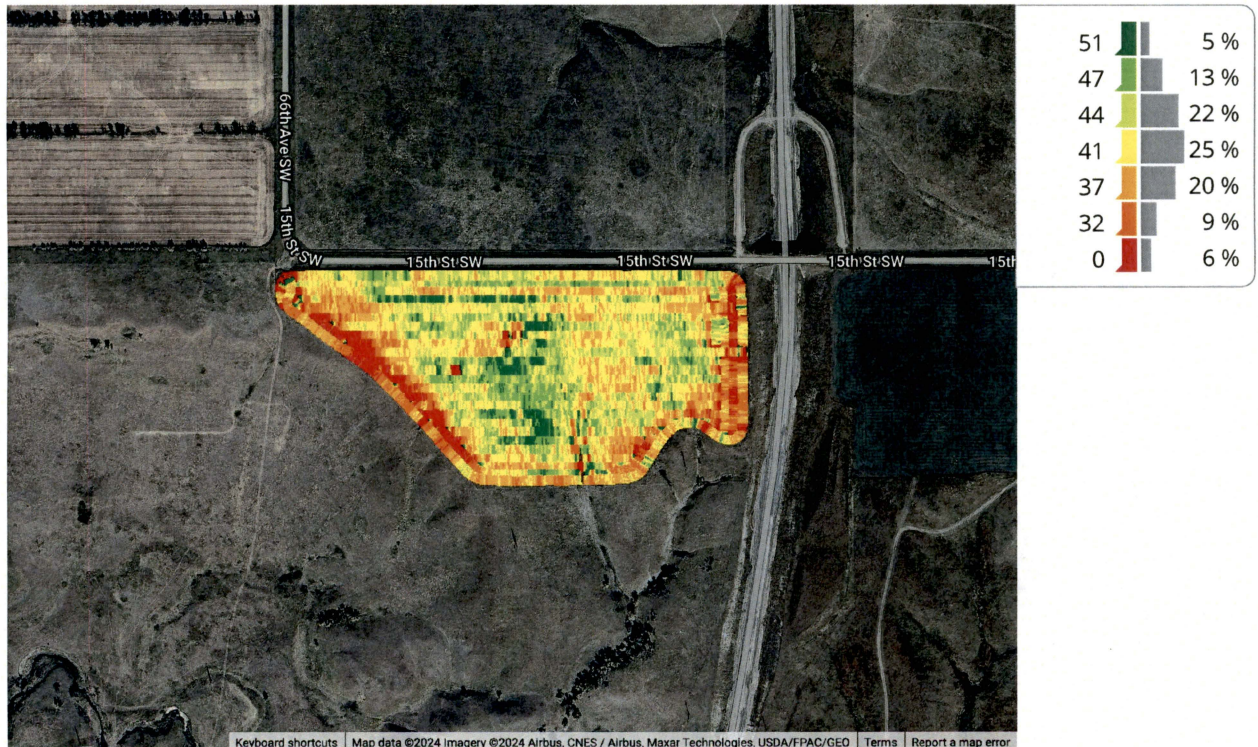
Productivity: 16.2 ac/hr

Total Fuel: 44.8 gal

Throughput (Wet): 35,836.8 lb/hr

Fuel Rate (Area): 1.3 gal/ac

### Map: Yield



### Equipment

1H0S780STMT815592: 1H0S780STMT815592

### Varieties

---

# 2020 Harvest: Peas

Field: North Hill

John Weinand | Voigt, Casey

Start: Jul 31, 2020 6:24 PM

End: Jul 31, 2020 9:13 PM

Operator Name: John



## Work Totals

Area Harvested: 66.3 ac

Total Yield: 1,125 bu

Wet Weight: 1,032 lb/ac

Yield: 17 bu/ac

Moisture: 11.7 %

Total Wet Weight: 68,460 lb

## Performance

Speed: 5.4 mi/hr

Harvest Time: 2 hr 38 min

Throughput (Dry): 427 bu/hr

Fuel Efficiency: 24.7 bu/gal

Fuel Rate (Time): 17.3 gal/hr

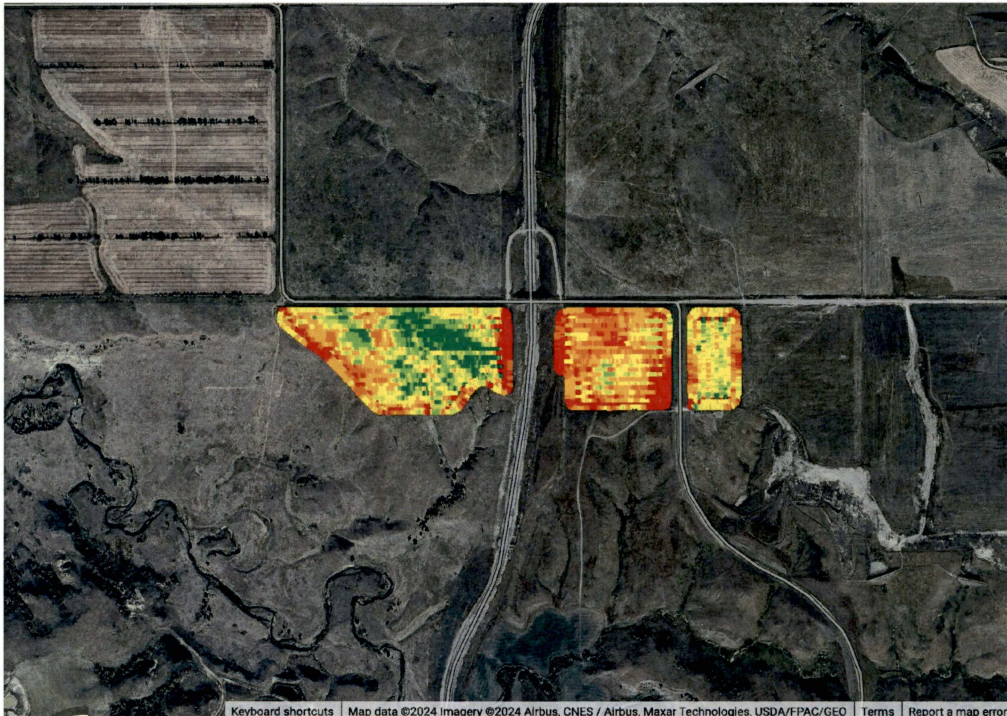
Productivity: 25.2 ac/hr

Total Fuel: 45.6 gal

Throughput (Wet): 25,965.1 lb/hr

Fuel Rate (Area): 0.7 gal/ac

## Map: Yield



|    |      |
|----|------|
| 29 | 8 %  |
| 25 | 10 % |
| 21 | 14 % |
| 17 | 18 % |
| 13 | 23 % |
| 8  | 15 % |
| 0  | 12 % |

## Equipment

1H0S680SJD0765334 Weinand: 1H0S680SJD0765334

## Varieties

AAC Carver

Brand Name: Meridian Seeds

# 2019 Harvest: Wheat (Hard Red Winter)

Field: North Hill

John Weinand | Voigt, Casey

Start: Jul 24, 2019 10:10 AM

End: Jul 24, 2019 2:37 PM



Operator Name: Daniel, John

## Work Totals

Area Harvested: 66 ac

Total Yield: 3,476 bu

Wet Weight: 3,268.3 lb/ac

Yield: 53 bu/ac

Moisture: 15.7 %

Total Wet Weight: 215,602 lb

## Performance

Speed: 3.6 mi/hr

Harvest Time: 4 hr 33 min

Throughput (Dry): 762 bu/hr

Fuel Efficiency: 36.4 bu/gal

Fuel Rate (Time): 21 gal/hr

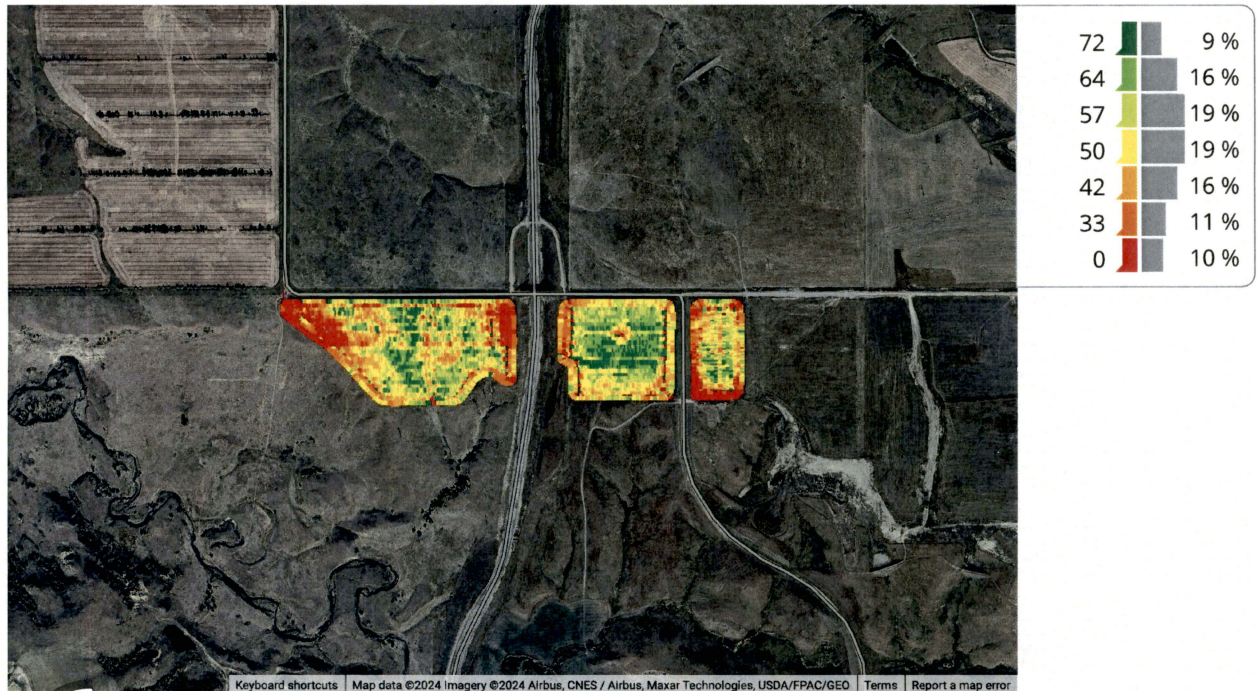
Productivity: 14.5 ac/hr

Total Fuel: 95.6 gal

Throughput (Wet): 47,289 lb/hr

Fuel Rate (Area): 1.4 gal/ac

## Map: Yield



## Equipment

1H0S6805JD0765334 Weinand: 1H0S6805JD0765334

1H0S6805JD0765351 Weinand: 1H0S6805JD0765351

## Varieties

SY Wolf

Brand Name: AgriPro

# 2018 Harvest: Canola

Field: North Hill

John Weinand | Voigt, Casey

Start: Aug 15, 2018 3:55 PM

End: Aug 16, 2018 2:27 PM



Operator Name: Daniel, John

## Work Totals

Area Harvested: 66 ac

Total Yield: 2,335 bu

Wet Weight: 1,840.2 lb/ac

Yield: 35 bu/ac

Moisture: 7.8 %

Total Wet Weight: 121,539 lb

## Performance

Speed: 3.9 mi/hr

Harvest Time: 4 hr 9 min

Throughput (Dry): 561 bu/hr

Fuel Efficiency: 28.3 bu/gal

Fuel Rate (Time): 19.8 gal/hr

Productivity: 15.9 ac/hr

Total Fuel: 82.5 gal

Throughput (Wet): 29,202.1 lb/hr

Fuel Rate (Area): 1.2 gal/ac

## Map: Yield



## Equipment

S680 - 1: 1HOS680SJD0765334

S680 - 2: 1HOS680SJD0765351

## Varieties

233P

Brand Name: Bayer Crop Science

# 2017 Harvest: Corn

Field: North Hill

John Weinand | Voigt, Casey

Start: Oct 18, 2017 6:15 PM

End: Oct 19, 2017 12:54 PM

Operator Name: Daniel



## Work Totals

Area Harvested: 63.3 ac

Total Yield: 2,948 bu

Wet Weight: 2,777.2 lb/ac

Yield: 47 bu/ac

Moisture: 19.9 %

Total Wet Weight: 175,762 lb

## Performance

Speed: 6 mi/hr

Harvest Time: 3 hr 11 min

Throughput (Dry): 926 bu/hr

Fuel Efficiency: 53.9 bu/gal

Fuel Rate (Time): 17.2 gal/hr

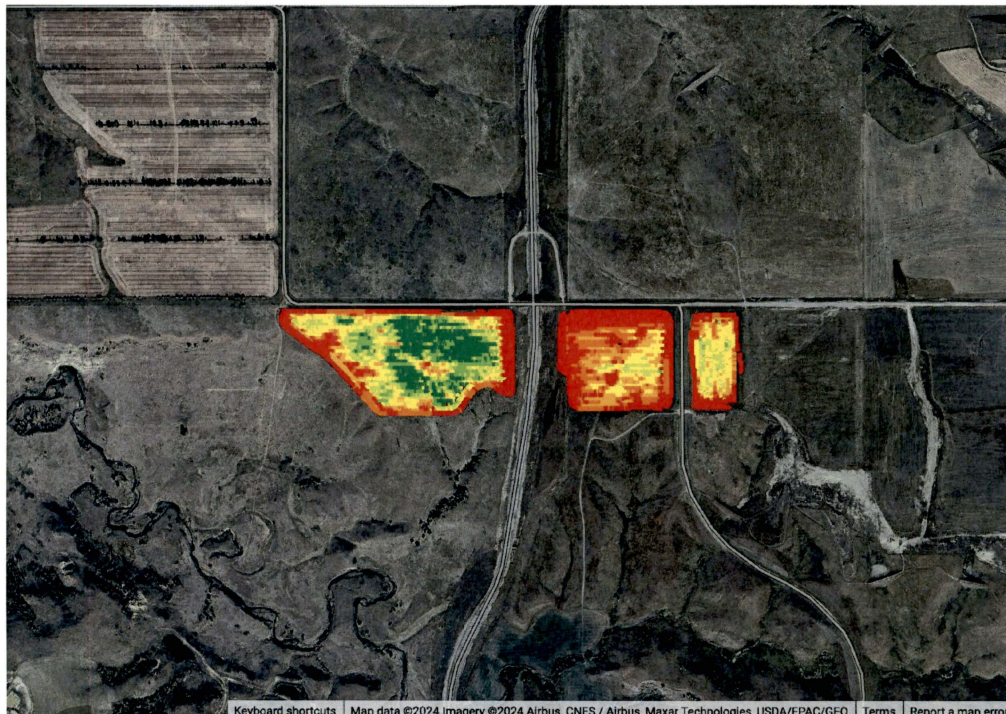
Productivity: 19.9 ac/hr

Total Fuel: 54.7 gal

Throughput (Wet): 55,187.9 lb/hr

Fuel Rate (Area): 0.9 gal/ac

## Map: Yield



|     |   |      |
|-----|---|------|
| 101 | █ | 11 % |
| 82  | █ | 9 %  |
| 65  | █ | 13 % |
| 48  | █ | 16 % |
| 31  | █ | 12 % |
| 13  | █ | 13 % |
| 0   | █ | 27 % |

## Equipment

S680 - 2: 1HOS680SJD0765351

## Varieties

2123VT2P

Brand Name: CROPLAN GENETICS

# 2016 Harvest: Peas

Field: North Hill

John Weinand | Voigt, Casey

Start: Jul 22, 2016 3:14 PM

End: Jul 24, 2016 2:41 PM



Operator Name: Daniel

## Work Totals

Area Harvested: 62.2 ac

Total Yield: 1,498 bu

Wet Weight: 1,599.6 lb/ac

Yield: 24 bu/ac

Moisture: 19.1 %

Total Wet Weight: 99,496 lb

## Performance

Speed: 4 mi/hr

Harvest Time: 3 hr 54 min

Throughput (Dry): 383 bu/hr

Fuel Efficiency: 19.9 bu/gal

Fuel Rate (Time): 19.3 gal/hr

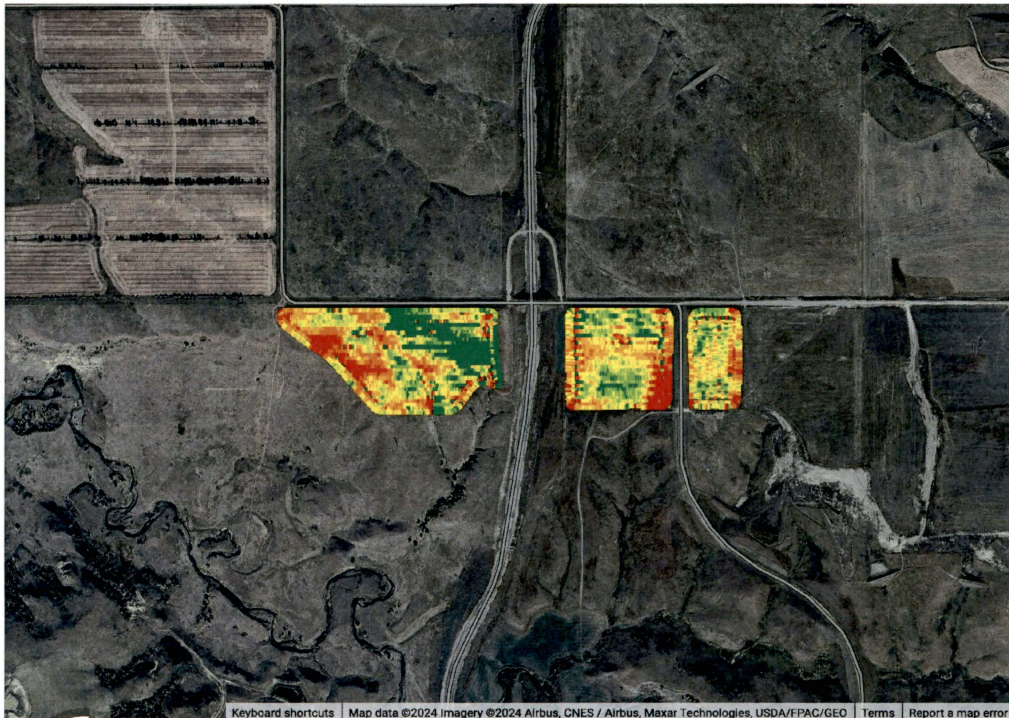
Productivity: 15.9 ac/hr

Total Fuel: 75.5 gal

Throughput (Wet): 25,418.3 lb/hr

Fuel Rate (Area): 1.2 gal/ac

## Map: Yield



## Equipment

S680 - 2: 1HOS680SJD0765351

## Varieties

Spider

Brand Name: canadian

# 2014 Harvest: Canola

Field: North Hill

John Weinand | Voigt, Casey

Start: Aug 19, 2014 11:07 AM

End: Aug 28, 2014 7:37 PM



Operator Name: Daniel, John

## Work Totals

Area Harvested: 74.1 ac

Total Yield: 3,399 bu

Wet Weight: 2,417.1 lb/ac

Yield: 46 bu/ac

Moisture: 9.7 %

Total Wet Weight: 179,023 lb

## Performance

Speed: 3.4 mi/hr

Harvest Time: 5 hr 27 min

Throughput (Dry): 622 bu/hr

Fuel Efficiency: 31.6 bu/gal

Fuel Rate (Time): 19.7 gal/hr

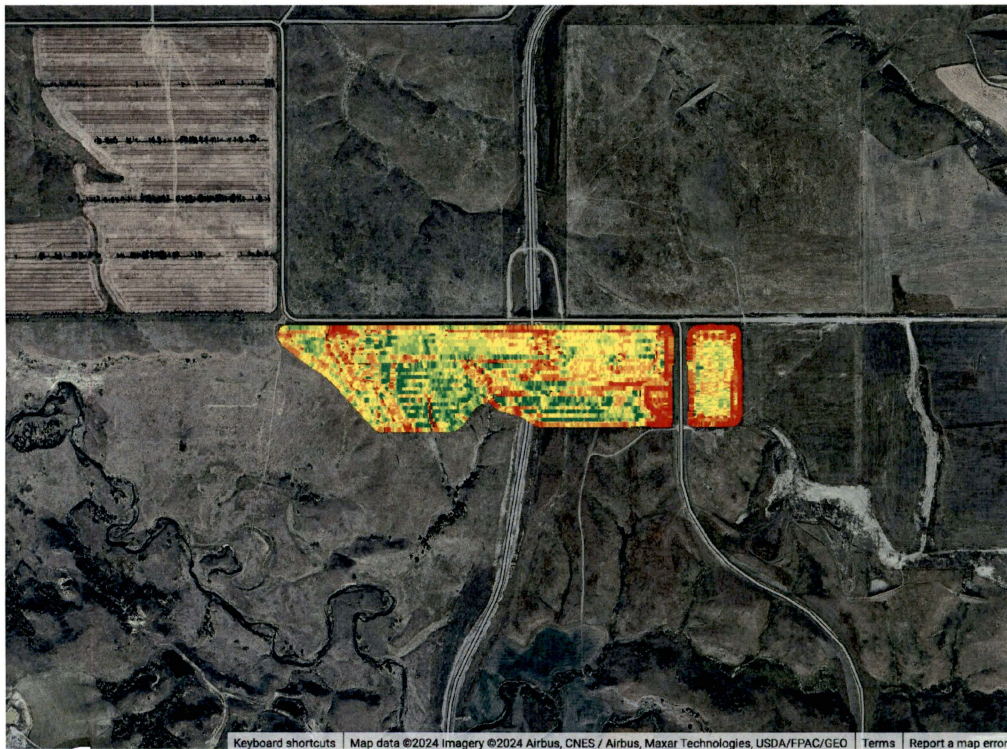
Productivity: 13.6 ac/hr

Total Fuel: 107.4 gal

Throughput (Wet): 32,770.7 lb/hr

Fuel Rate (Area): 1.5 gal/ac

## Map: Yield



|    |      |
|----|------|
| 63 | 9 %  |
| 56 | 13 % |
| 50 | 19 % |
| 44 | 22 % |
| 38 | 16 % |
| 30 | 11 % |
| 0  | 9 %  |

## Equipment

S680: 1HOS680SJD0765351

## Varieties

L120

## 2013 Harvest: Corn

Field: North Hill

John Weinand | Voigt, Casey

Start: Oct 10, 2013 7:56 PM

End: Nov 20, 2013 9:57 AM



Operator Name: Daniel

### Work Totals

Area Harvested: 74.7 ac

Total Yield: 8,964 bu

Wet Weight: 7,129 lb/ac

Yield: 120 bu/ac

Moisture: 19.9 %

Total Wet Weight: 532,430 lb

### Performance

Speed: 5.2 mi/hr

Harvest Time: 4 hr 9 min

Throughput (Dry): 2,152 bu/hr

Fuel Efficiency: 111.3 bu/gal

Fuel Rate (Time): 19.3 gal/hr

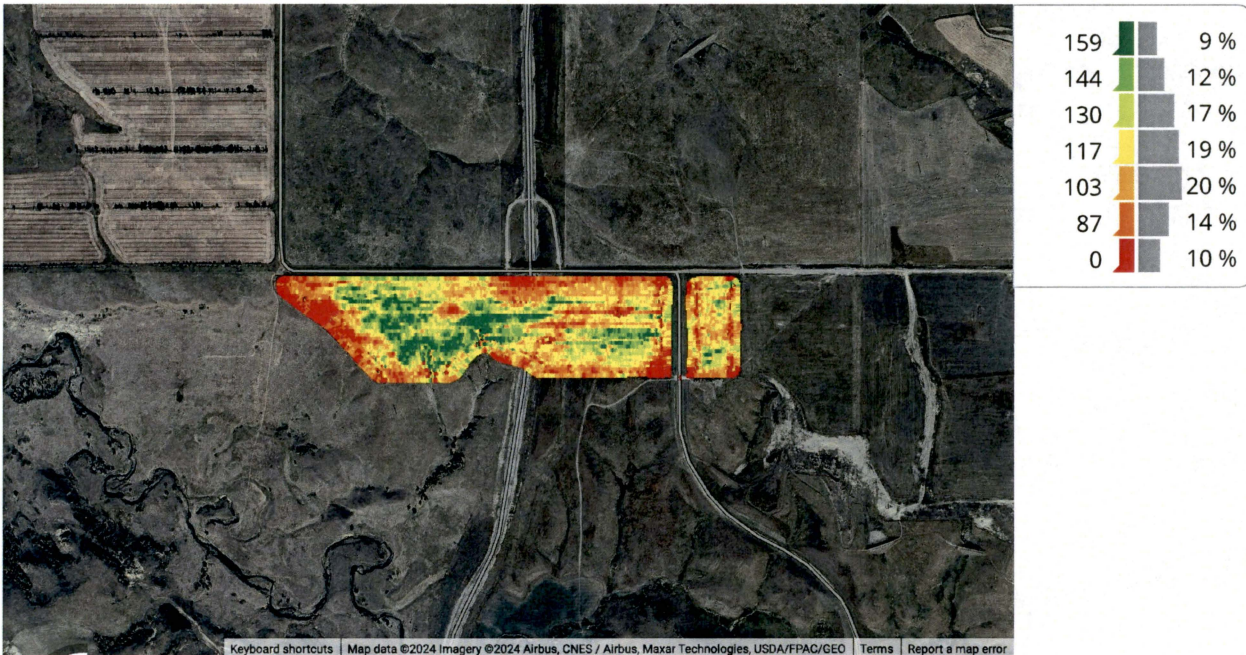
Productivity: 17.9 ac/hr

Total Fuel: 80.3 gal

Throughput (Wet): 127,813.1 lb/hr

Fuel Rate (Area): 1.1 gal/ac

### Map: Yield



### Equipment

9870STS: Unknown Machine

### Varieties

2280AS/GT

229VT2P

GL2949AB

Jambalaya

# 2012 Harvest: Peas

Field: North Hill

John Weinand | Voigt, Casey

Start: Jul 30, 2012 3:19 PM

End: Jul 30, 2012 6:09 PM



Operator Name: Daniel, Jared

## Work Totals

Area Harvested: 75.2 ac

Total Yield: 1,214 bu

Wet Weight: 1,006.9 lb/ac

Yield: 16 bu/ac

Moisture: 13.8 %

Total Wet Weight: 75,675 lb

## Performance

Speed: 4.9 mi/hr

Harvest Time: 3 hr 49 min

Throughput (Dry): 317 bu/hr

Fuel Efficiency: 23.3 bu/gal

Fuel Rate (Time): 13.6 gal/hr

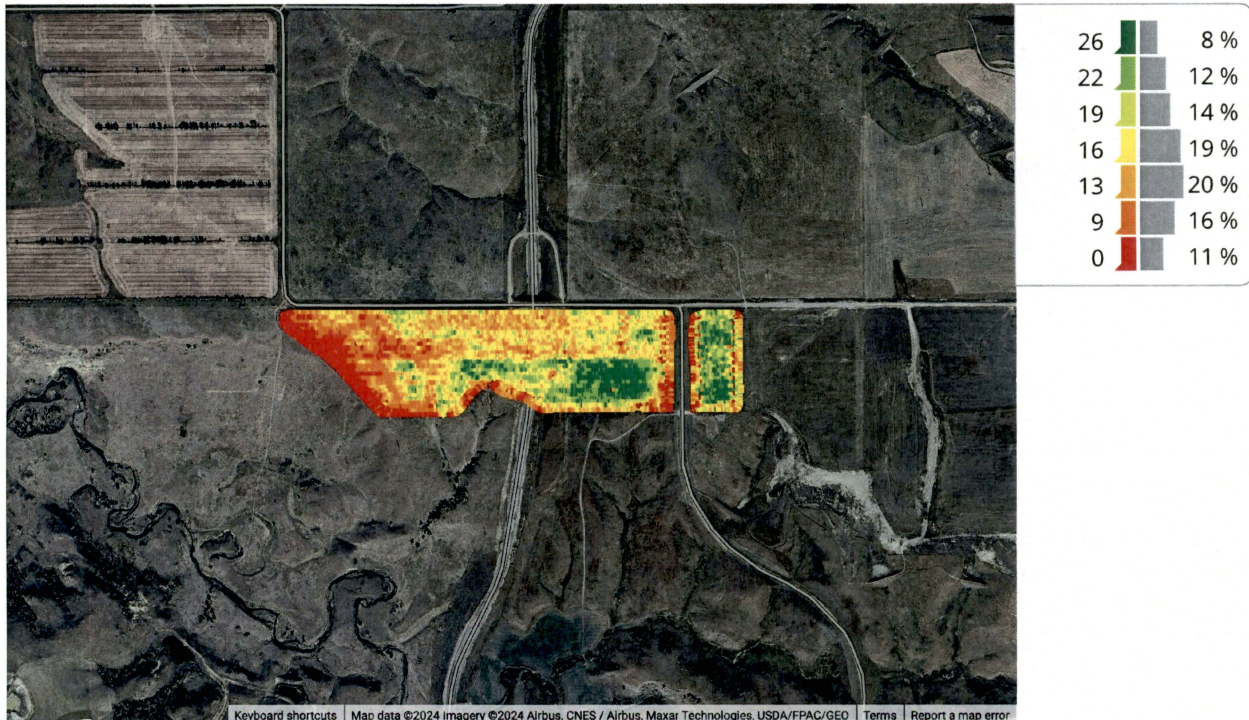
Productivity: 19.6 ac/hr

Total Fuel: 52 gal

Throughput (Wet): 19,783.7 lb/hr

Fuel Rate (Area): 0.7 gal/ac

## Map: Yield



## Equipment

9870STS: Unknown Machine 1

S 680: 1HOS680SJD0765334

## Varieties

Agassiz

# 2011 Harvest: Wheat (Hard Red Winter)



Field: North Hill

John Weinand | Voigt, Casey

Start: Aug 11, 2011 12:19 PM

End: Aug 11, 2011 5:12 PM

## Work Totals

Area Harvested: 76.2 ac

Total Yield: 5,225 bu

Wet Weight: 4,166.8 lb/ac

Yield: 69 bu/ac

Moisture: 14 %

Total Wet Weight: 317,492 lb

## Performance

Speed: 3 mi/hr

Harvest Time: 6 hr 22 min

Throughput (Dry): 820 bu/hr

Fuel Efficiency: 48 bu/gal

Fuel Rate (Time): 17.1 gal/hr

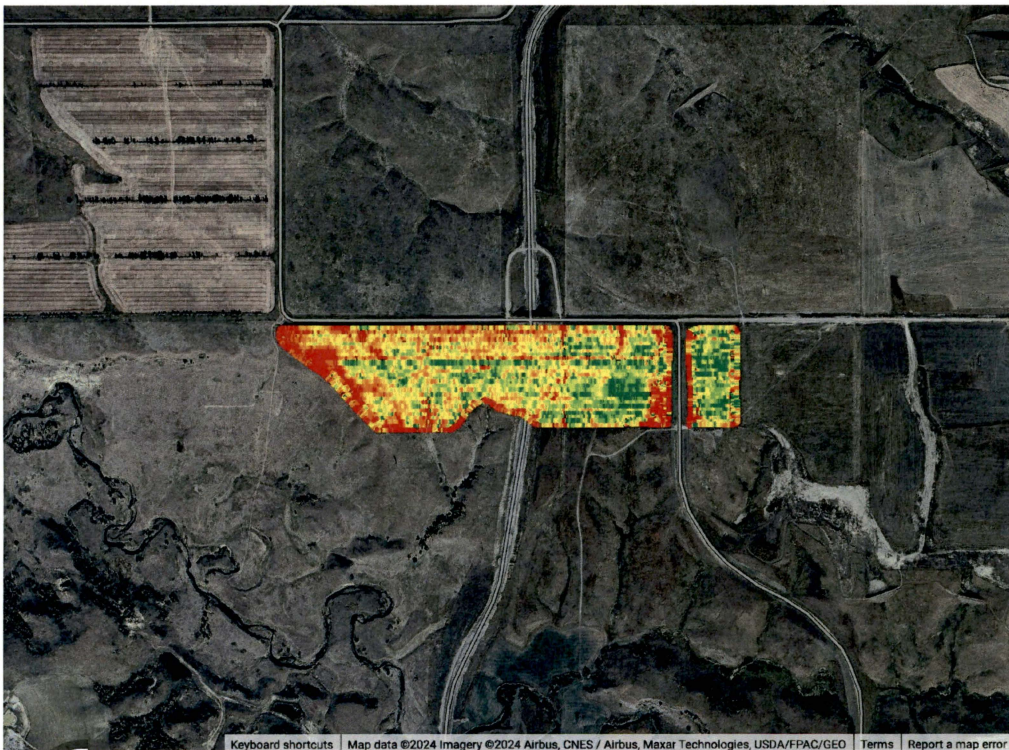
Productivity: 11.9 ac/hr

Total Fuel: 109 gal

Throughput (Wet): 49,797.6 lb/hr

Fuel Rate (Area): 1.4 gal/ac

## Map: Yield



|    |      |
|----|------|
| 92 | 10 % |
| 83 | 15 % |
| 75 | 19 % |
| 67 | 18 % |
| 58 | 15 % |
| 47 | 12 % |
| 0  | 11 % |

## Equipment

9870STS: Unknown Machine

## Varieties

Jagalene

## 2010 Harvest: Canola

Field: North Hill

John Weinand | Voigt, Casey

Start: Aug 20, 2010 4:19 PM

End: Aug 21, 2010 11:10 AM



Operator Name: Daniel, John

### Work Totals

Area Harvested: 97.5 ac

Total Yield: 3,337 bu

Wet Weight: 1,779.2 lb/ac

Yield: 34 bu/ac

Moisture: 5.5 %

Total Wet Weight: 173,537 lb

### Performance

Speed: 3.4 mi/hr

Harvest Time: 6 hr 59 min

Throughput (Dry): 477 bu/hr

Fuel Efficiency: 31.8 bu/gal

Fuel Rate (Time): 15 gal/hr

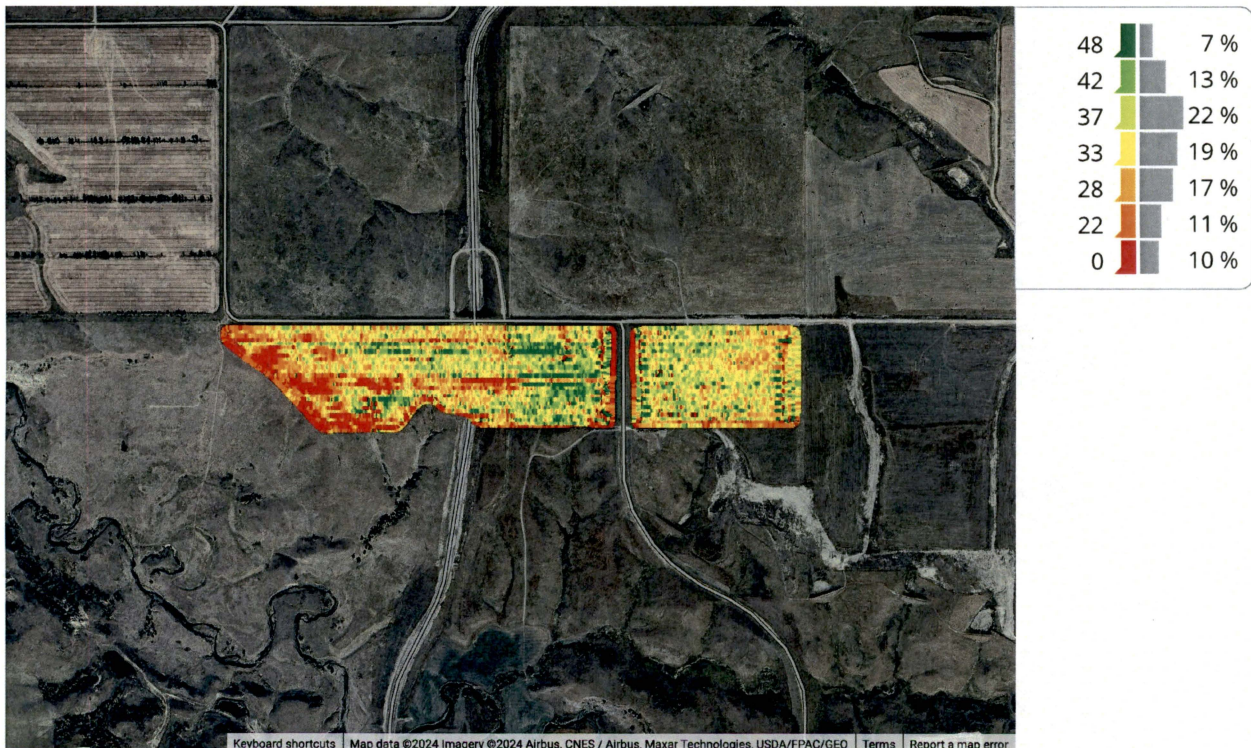
Productivity: 14 ac/hr

Total Fuel: 104.9 gal

Throughput (Wet): 24,832.2 lb/hr

Fuel Rate (Area): 1.1 gal/ac

### Map: Yield



### Equipment

9870 STS: Unknown Machine

### Varieties

8440

# 2009 Harvest: Wheat (Durum)



Field: North Hill

John Weinand | Voigt, Casey

Start: Sep 11, 2009 12:20 PM

Operator Name: Daniel

End: Sep 15, 2009 5:36 PM

## Work Totals

Area Harvested: 101.1 ac

Yield: 62 bu/ac

Total Yield: 6,291 bu

Moisture: 13.6 %

Wet Weight: 3,764.9 lb/ac

Total Wet Weight: 380,593 lb

## Performance

Speed: 4.2 mi/hr

Productivity: 17.2 ac/hr

Harvest Time: 5 hr 51 min

Total Fuel: 101.3 gal

Throughput (Dry): 1,072 bu/hr

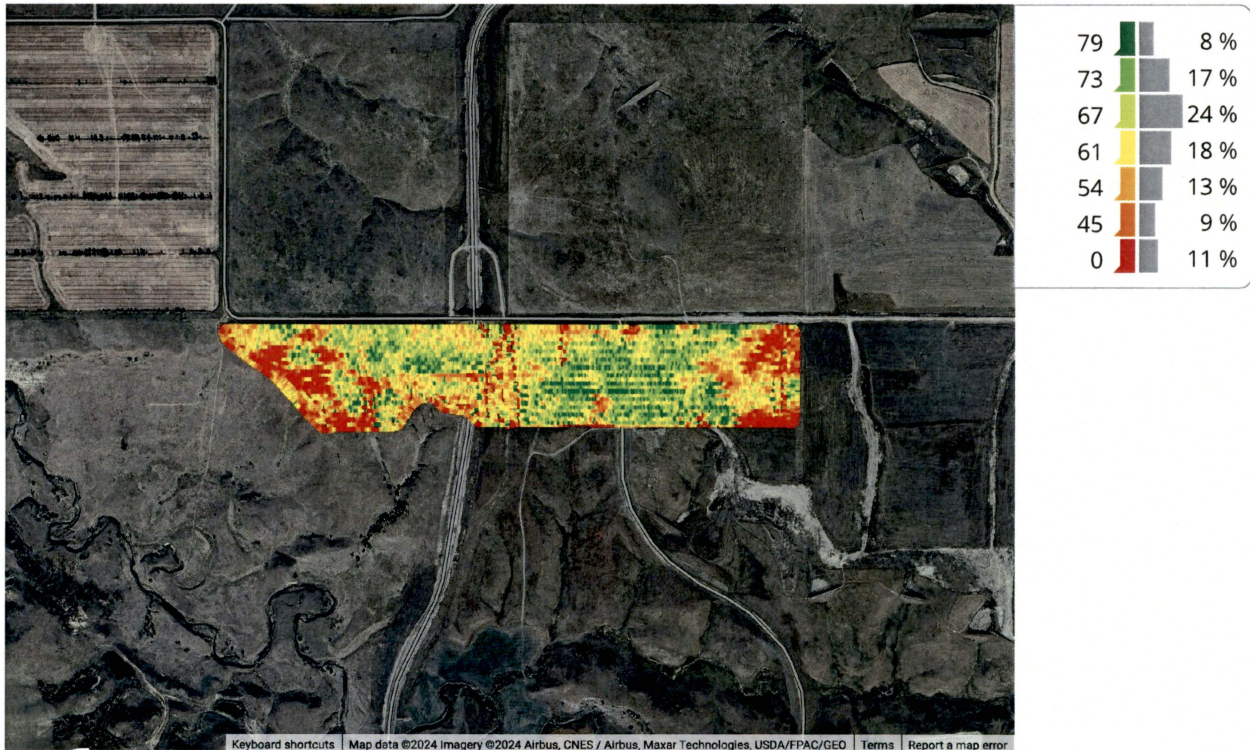
Throughput (Wet): 64,882.3 lb/hr

Fuel Efficiency: 62.1 bu/gal

Fuel Rate (Area): 1 gal/ac

Fuel Rate (Time): 17.3 gal/hr

## Map: Yield



## Equipment

Unknown Machine: Unknown Machine

## Varieties

Divide