




A Touchstone Energy® Cooperative 

July 1, 2024

Secretary to the Commission  
North Dakota Public Service Commission  
State Capitol Building  
Bismarck, North Dakota 58505

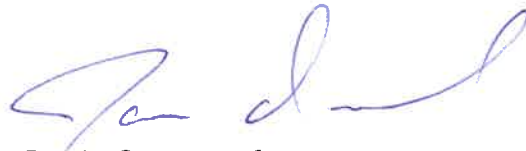
Dear Sir:

In accordance with Section 49-22-04 of the North Dakota Century Code, Minnkota Power Cooperative herewith files the enclosed Ten-Year Plan with the North Dakota Public Service Commission.

Any questions concerning the contents of the enclosed document should be directed to me.

Sincerely,

MINNKOTA POWER COOPERATIVE, INC.

A handwritten signature in blue ink, appearing to read "Jamie Overgaard", is written over a faint, light blue grid background.

Jamie Overgaard  
Resource Planning Department

Enclosure

# TEN-YEAR PLAN



## Grand Forks, North Dakota

Prepared for the North Dakota Public Service Commission  
Pursuant to Section 49-22-04 of the  
North Dakota Century Code

MPC  
Resource Planning Department

**July 2024**

## TABLE OF CONTENTS

	<b>Page Number</b>
<b>INTRODUCTION</b>	3
<b>SECTION A:</b> Existing Energy Conversion Facilities	4
<b>SECTION B:</b> Energy Conservation Facilities Under Construction	4
<b>SECTION C:</b> Proposed Energy Conversion Facilities on Which Construction Is Intended Within the Ensuing Five Years	4
<b>SECTION D:</b> Proposed Energy Conversion Facilities During the Next Ten-Year Time Period	5
<b>SECTION E:</b> Existing Transmission Facilities (Electric)	6
<b>SECTION F:</b> Existing Transmission Facilities (Pipeline)	6
<b>SECTION G:</b> Proposed Transmission Facilities on Which Construction Is Intended Within the Ensuing Five Years (Electric)	6
<b>SECTION H:</b> Proposed Transmission Facilities on Which Construction Is Intended Within the Ensuing Five Years (Pipeline)	7
<b>SECTION I:</b> Proposed Transmission Facilities During the Next Ten-Year Time Period (Electric and Pipeline)	7
<b>SECTION J:</b> Regional Coordination	7
<b>SECTION K:</b> Environmental Information	9
<b>SECTION L:</b> Projected Demand for Service	10
<b>EXHIBIT I:</b> U.S. Department of Energy Form EIA-923	
<b>EXHIBIT II:</b> Federal Energy Regulatory Commission Form FERC-714	
<b>EXHIBIT III:</b> Minnkota Electric System Maps	

## **MINNKOTA POWER COOPERATIVE, INC.**

# **TEN-YEAR PLAN**

## **INTRODUCTION**

Minnkota Power Cooperative, Inc. (Minnkota) was organized on March 28, 1940, and incorporated under the laws of the State of Minnesota. It is the wholesale electric power supplier for 11 rural electric cooperatives located in the eastern one-third of North Dakota and the northwestern part of Minnesota. Minnkota serves approximately 136,000 end-use customers in a 34,500 square mile service area that includes 33 counties in the Red River Valley and adjoining areas.

Minnkota also serves as operating agent for the Northern Municipal Power Agency (NMPA). Headquartered in Thief River Falls, Minn., NMPA supplies the electric needs of 12 associated municipals that serve more than 15,000 consumer accounts in the same geographic area as the Minnkota member-owners.

Minnkota owns and operates the Milton R. Young 1 plant, a 250,000-kW lignite-fired steam generator located at the Milton R. Young Station near Center, North Dakota. Minnkota owns or leases another 34,000 kW of smaller diesel units located throughout its service area. Minnkota schedules a firm allocation of 101,000 kW with the Western Area Power Administration on behalf of Minnkota and Northern Municipal Power Agency (NMPA). Minnkota, as operating agent for NMPA, which consists of 12 municipals, 10 located in northwestern Minnesota and two located in eastern North Dakota, also operates NMPA's 128,100 kW from NMPA's share of Coyote plant output.

Square Butte Electric Cooperative owns the Milton R. Young 2 plant, a 455 MW lignite-fired steam generator co-located at the Milton R. Young Station. Minnkota is the operating agent for the Young 2 generator. The output of the Young 2 plant is allocated to Minnkota Power and Minnesota Power at a ratio of 50% to each utility (227,500 kw). In addition to its 50% allocation, Minnkota currently purchases 41.2% of the output of the plant from Minnesota Power, with increasing increments until 2026, at which point Minnkota will receive 100% of the electrical energy produced by Young 2.

Minnkota's wind portfolio consists of owned turbines, two 900 kW wind turbines, one located near Valley City, ND and one located near Petersburg, North Dakota, as well as a mix of 20- and 25-year Purchase Power Agreements for a total of 458,050 kW. The Purchase Power Agreements are comprised of 139,500 kW from wind located near Langdon, ND, 217,500 kW from wind projects located near Pillsbury, ND, and a more recent Purchase Power Agreement from Oliver Wind III, placed into service January 1, 2017, as a 25-year Power Purchase Agreement for 99,250 kW from a wind project located west of Center, ND.

**SECTION A: Existing Energy Conversion Facilities**

1. See Exhibit I - U.S. Department of Energy Form EIA-923  
OTP is responsible for Form EIA-923 for the Coyote facilities.

**SECTION B: Energy Conversion Facilities Under Construction**

None

**SECTION C: Proposed Energy Conversion Facilities on Which Construction is Intended Within The Ensuing Five Years**

The Milton R. Young Station continues to be a reliable and resilient resource for Minnkota and its members. Recognizing the ever-increasing pressure on utilities to reduce carbon dioxide (CO<sub>2</sub>) emissions, Minnkota has been leading the development of Project Tundra. The goal of Project Tundra is to install carbon capture and storage technologies at the Young Station to capture and permanently store the CO<sub>2</sub> more than a mile underground in geologic formations. The carbon capture system will utilize Mitsubishi Heavy Industries Advanced KM CDR Process and will capture approximately 95% of the CO<sub>2</sub> emissions from the flue gas that is processed. The carbon capture system is designed to process 100% of the flue gas from Unit 2, and about 20% of the flue gas from Unit 1. Up to about 4 million tonnes/year of CO<sub>2</sub> would be captured and permanently sequestered from the atmosphere, which is the equivalent of permanently removing about 800,000 vehicles from the road.

Another driver for Minnkota's pursuit of Project Tundra is to create a new benchmark – a large-scale demonstration at an existing plant that can be commercially and economically replicated across the region, the country, and the world. Minnkota recognizes that carbon regulations present a risk to maintaining affordable and reliable resources. If constructed, Project Tundra could help provide continued reliability and affordability of electricity from the power plant, while preserving prior plant infrastructure investment. Using a technology-driven solution can help to reduce risk to our member-owners given the uncertainty of future CO<sub>2</sub> regulations.

Project Tundra is currently in its final stage of development with partners TC Energy (commercialization lead and a potential investor), Mitsubishi Heavy Industries (lead technology provider) and Kiewit (construction lead). Together, these entities continue to work under an engineering, procurement and construction (EPC) model. The project has received important environmental approvals to ensure progress can continue forward. Project Tundra has access to the two largest permitted CO<sub>2</sub> storage facilities in the United States located near Center, N.D., which allows for the safe and permanent storage of 222 million tonnes of CO<sub>2</sub>. Additionally, the state has also approved an air permit for the carbon capture facility.

Project Tundra is fortunate to have significant state and federal support. The project secured \$250 million in low-interest loans through North Dakota's Clean Sustainable Energy Authority (CSEA) and is the recipient of U.S. Department of Energy (DOE) funding through its Carbon Capture Demonstration Projects Program. The DOE

funding is under award negotiation for up to \$350 million. The project will also utilize federal 45Q tax credits, which provide \$85 per ton of CO2 stored.

With project activities continuing to ramp up, Minnkota continues working closely with member cooperatives, local landowners, community members and other key stakeholders. Consistent landowner meetings are held, project leaders present to county and state officials, and educational sessions have been held with member system board directors and staff. Minnkota is committed to keeping open lines of communication as the project moves ahead. More details of Project Tundra can be found at [www.projecttundrand.com](http://www.projecttundrand.com).

#### **SECTION D: Proposed Energy Conversion Facilities During the Next Ten-Year Time Period**

Through passage of the Inflation Reduction Act and the Bipartisan Infrastructure Law, Minnkota has access to new tools and resources to navigate the energy transition. As funding opportunities opened in 2023, Minnkota pursued strategic opportunities to enhance its power supply portfolio, expand its power delivery system and add new smart grid technologies.

From a power supply standpoint, applications are focused on the advancement of Project Tundra and the potential integration of new renewable energy resources in North Dakota. In addition to preserving options to participate in grid expansion projects, Minnkota is focused on modernization efforts related to its existing power delivery system. Funding for new smart grid technologies is being pursued, which would provide real-time data access and greater system visibility to Minnkota's power system operators. This enhanced situational awareness helps improve reliability and limits outage events.

Minnkota anticipates learning more about the status of its funding applications in late 2024.

**SECTION E: Existing Transmission Facilities (Electric)**

Minnkota’s North Dakota Electric transmission facilities<sup>1</sup> are listed in the table below. See Exhibit III for a map of Minnkota’s transmission facilities.

Minnkota does not have plans to retire any transmission facilities in the ensuing ten years.

Transmission Line	Voltage (kV)	AC/DC	In Service Dates	Notes
Wahpeton - Frontier - Maple River	230	AC	1968	Tapped by Frontier Substation in 2007
Maple River - Winger	230	AC	1970	6.3 mi. in ND, rest in MN
Prairie -Walle- Winger	230	AC	1970	9.2 mi. in ND, rest in MN Tapped by Walle Substation in 2024
Prairie – Lake Ardoch - Drayton	230	AC	1970	Tapped by Lake Ardoch in 2024
Center 230 - Square Butte	230	AC	1971	Planned to be tapped for Project Tundra
Center 230 – Rough rider - Mandan	230	AC	1971	Tapped by Roughrider substation in 2016
Center - Jamestown (Fried)	345	AC	1981	Center-Maple River line originally completed in 1970 at 230 kV. Uprated to 345 kV in 1981.
Jamestown (Fried) - Buffalo	345	AC	1981	
Buffalo - Bison - Maple River	345	AC	1981	Tapped by Bison Substation in 2014
Pillsbury - Maple River	230	AC	2008	
Center - Prairie (CGF)	345	AC	2014	

**SECTION F: Existing Transmission Facilities (Pipeline)**

None

**SECTION G: Proposed Transmission Facilities on Which Construction is Intended Within the Ensuing Five Years**

An independent, third-party developer has executed a Generation Interconnection Agreement with Minnkota as transmission operator for potential interconnection of a contemplated 300 MW solar farm near Abercrombie, ND. Minnkota anticipates constructing a new 230 kV substation (Abercrombie) on the existing Frontier-Wahpeton 230 kV line as well as increasing the rating of the Frontier-Wahpeton 230 kV line should the project move to construction.

Minnkota does not have any other defined plans for construction of 230 kV

---

<sup>1</sup> See definition of Electric transmission facility in North Dakota Century Code 49-22.

transmission in North Dakota. However, a number of plans are in development for improvement of Minnkota's 69 and 115 kV transmission, which will benefit the cost, and/or reliability of service to North Dakota customers. A number of other ideas are included to meet various identified future needs such as aging infrastructure, blink mitigation, long term outage risk, and transmission tariff costs. Some of those alternatives include tapping the 115 kV and 230 kV systems to provide new sources to lower voltage transmission.

**SECTION H: Proposed Transmission Facilities on Which Construction is Intended Within the Ensuing Five Years (Pipeline)**

If Minnkota elects to proceed with Project Tundra, a quarter-mile CO<sub>2</sub> flow line (permitted under NDCC 38-22) that connects the carbon capture plant to the injection well pad will be necessary. Both the pipeline and injection well pad are located entirely on Minnkota property and are located on the grounds of the Milton R. Young Station near Center, North Dakota.

A second CO<sub>2</sub> flow line (also permitted under NDCC 38-22) connecting the capture plant to an injection pad located approximately 7.4 miles west of the Milton R. Young Station may also be developed, however there is no firm schedule at this time.

**SECTION I: Proposed Transmission Facilities during the Next Ten-Year Time Period (Electric and Pipeline)**

Minnkota does not have additional plans for proposed Transmission Facilities or Pipeline Facilities beyond the next five years.

**SECTION J: Regional coordination**

Minnkota participates heavily in a variety of regional transmission planning and operating coordination groups and organizations. Descriptions of some of Minnkota's primary coordination venues are listed below.

- Midcontinent Independent System Operator (MISO): In 2015, Minnkota signed multiple agreements with MISO under which MISO now provides various planning coordination, tariff administration, and operating services to Minnkota. These agreements bolstered an already healthy and mutually beneficial relationship between the parties. The services provided under these agreements replace services previously provided to Minnkota through the Midcontinent Area Power Pool, which was dissolved by its members in 2015, as well as other contractors. Minnkota also receives reliability coordination services from MISO and is a MISO market participant.
  - Specific to its role as a Planning Coordinator, MISO provides an open forum for Minnkota to submit planned transmission projects through the MISO Transmission Expansion Planning (MTEP) process. The projects receive independent evaluation by MISO and are presented in Sub-regional Planning Meetings (SPM) and on MISO's website, both of which are open and available to the public. The meetings are well

attended by many of Minnkota's neighboring transmission owners, and other stakeholders. More information on the SPM meetings and the MTEP process can be found at [www.misoenergy.org](http://www.misoenergy.org).

- Midwest Reliability Organization (MRO): Minnkota is a member of the MRO, which is a non-profit organization of regional utilities established to develop regional reliability standards and ensure compliance with standards of the North American Electric Reliability Corporation (NERC) as well as its own. Further information about MRO is available on-line at [www.midwestreliability.org](http://www.midwestreliability.org).
- Manitoba Hydro US Coordinating Committee (MHCC): Minnkota is a member of the MHCC, which is comprised of the owners of the Manitoba Hydro – US transmission interface. The MHCC is responsible for various tasks related to the interface including transmission studies, operating procedures, review of modifications, transfer capability determination, and protection system coordination. Minnkota also participates in various working groups which report to the MHCC.
- Minnkota Ad Hoc Coordination: Minnkota actively manages queues for customers requesting the interconnection of new large generators and for transmission service reservations over Minnkota's transmission system. All studies are distributed to and reviewed by ad hoc groups which are formed for the purpose of reviewing those studies. Those ad hoc groups include neighboring utilities and Regional Transmission Organizations (RTOs) such as MISO and Southwest Power Pool (SPP). Minnkota also participates in ad hoc review of studies performed by its neighboring transmission service providers.
- Minnesota Transmission Owners (MTO): Minnkota is a sponsoring utility for the MTO group, which is a collaborative effort between a number of Minnesota-based utilities and three Minnesota government agencies. The group fulfills the utilities' statutory obligations for transmission planning in the state of Minnesota. These obligations include the development of the Minnesota Biennial Transmission Plan, as well as studies associated with Minnesota mandates regarding generation portfolio requirements. Further information about the MTO group is available at [www.minnelectrans.com](http://www.minnelectrans.com).
- Congestion Management Process Council (CMPC): Although not a voting member, Minnkota participates in CMPC meetings, comprised of MISO, SPP, Associated Electric Cooperative Inc. (AECI), PJM, Louisville Gas and Electric/Kentucky Utilities (LGE/KU), and Tennessee Valley Authority (TVA). The group develops standard procedures to coordinate congestion between and within the entities.
- Minnkota also participates actively in many committees and working groups which are hosted by MISO, SPP, MRO, the North American Transmission Forum (NATF), and others.

## **SECTION K: Environmental information**

Minnkota has a longstanding commitment to environmental stewardship and takes great pride in preserving the region's air, water and land for future generations.

Minnkota is a borrower from the Rural Utilities Services of Washington, D.C. In accordance with national policy, the policies, plans, and programs of the Rural Utilities Services and its borrowers are conducted so as to meet national environmental goals in accordance with Federal and State requirements.

The Rural Utilities Services includes in its loan contracts, a provision to the effect that the borrower shall observe all applicable Federal and State requirements for the protection of the environment. Environmental Statements are required by the Rural Utilities Services in connection with all loans and other agency actions that will significantly affect the environment.

For all Minnkota's transmission lines of 230 kV and above, Minnkota environmental staff, supplemented by subject matter expert consultants prepare all necessary environmental analysis and documentation.

The to the extent there is a State or Federal permit requirement or regulation implicated by the environmental characteristics of a transmission facility these requirements are used in design and routing/siting lower voltage transmission facilities. It is Minnkota's policy to route transmission facilities in such a location as to minimize environmental impact and interference to private landowners while at the same time selecting a route or site that is in the best interest of providing utility service to the general public.

Minnkota cooperates with other area electric utilities on joint projects to significantly reduce the total number of miles of transmission line otherwise required to be constructed by any single entity to maximize the benefits and minimize the costs to North Dakota electric consumers. During route selection, attempts are made to follow the established criteria and to minimize impact to environment and viewshed. When feasible, this includes such factors as traffic patterns, screening road crossings, and incorporation of structures with natural topography or vegetation. Special avoidance areas avoided to the greatest extent practicable in line routing.

Minnkota cooperates with State and Federal agencies in the route selection process. These agencies review and comment on the Environment Impact Statement. Existing land use and potential use is considered to either avoid irrigable areas or place the structures in such a way that they will minimize impact or interference with irrigation. Transmission line structures are placed in non-tillable areas to the extent reasonably practicable and span lengths are maximized within code and regulation to reduce the total number of structures resulting in mitigating and avoiding impact to the environment and existing land use, such as agricultural activities.

Environmental impacts are weighed along with such other significant factors, such as service reliability, cost, and safety. Minnkota accounts for these factors in designing, constructing, operating, and maintaining its electric transmission system.

Minnkota's baseload is generated from the Milton R Young Station which consists of two-unit, cyclone lignite coal-fired units, Unit 1 (250MW) and Unit 2 (455MW).

The Environmental Protection Agency (EPA) between April 15 and May 15 released four major rules targeted at increasing regulation on electric generating units, primarily coal-fired units. Mercury Air Toxics Standards was the first to be released targeting the reduction of particulate matter and mercury emissions under Section 112 of the Clean Air Act. Both Unit 1 and Unit 2 will be impacted by the final regulation and will require capital and operating expense for compliance. Currently, the rule is being reviewed in the D.C. Circuit Court and a motion for stay of implementation has been filed by 23 States and multiple industry petitioners. Minnkota is currently undertaking review of and opportunities for Unit 1 and Unit 2 to meet the new compliance standards and if the rule is not stayed Minnkota will need to be operating in compliance with the new standards by July 2026.

The second EPA rule released was a rule expanding the scope of EPA's regulation of Coal Combustion Residuals (CCR). The rule is being challenged in the D.C. Circuit Court and similar motion to stay implementation has been filed by a coalition of States and industry. Minnkota is evaluate the rules impact on management of its CCR units, compliance dates depend on the different activities required based upon category of the CCR unit type and the rules' new definitions with the earliest actions required before the end of 2024.

The third rule EPA released was a greenhouse gas regulation of carbon dioxide (CO<sub>2</sub>) under Section 111 of the Clean Air Act. The rule requires existing coal-fired power plants to shut down by January 1, 2032 if they cannot reduce their baseline CO<sub>2</sub> emissions by 88.4% by January 1, 2032. Minnkota has pursued Project Tundra for the past decade under a "first-of-its-kind" in scale and which allows for CO<sub>2</sub> to be captured from both generating units at the Milton R. Young Station. A key factor in Project Tundra moving forward is to have more assurance that the project will allow the Milton R. Young Station to comply with EPA's greenhouse gas standards. While Minnkota is confident that the CO<sub>2</sub> captured from the principal unit of design Unit 2 (455 MW) will meet the standards, we will need clarity around how Unit 1 (250 MW) will be treated under the rule since Unit 1's CO<sub>2</sub> emissions are partially captured when both units are operating at full output.

## **SECTION L: Projected demand for service**

1. Minnkota's 2024 peak\* demand is 1,007,972 kW, which is about 11% higher than the 2014 peak of 905,889 kW. Modest load growth is projected over the next decade to bring Minnkota's 2034 peak demand to an estimated 1,0788,000 kW, or about 7% above 2024's peak.

Minnkota has an industry-leading demand response program that helps times of high energy usage or volatile market pricing. Electricity consumers in the region voluntarily sign up for the program, which allows Minnkota to temporarily interrupt electric heating, water heating, vehicle chargers and commercial account service. During these "control periods," most consumers are automatically switched to a backup

heating system or generator. The savings from not having to purchase additional power are passed on to consumers through a lower off-peak electric rate – a win for the consumer, Minnkota and the grid.

The program is popular with nearly 55,000 consumers participating across eastern North Dakota and northwestern Minnesota. In 2034, it is anticipated that Minnkota will be able to control 410 MW (95 MW from PPA) in the winter and 205 MW (95 MW from PPA) in the summer. In winter, when demand for electricity in North Dakota is at its highest, Minnkota can control approximately one-third of the demand in its system.

2. Minnkota's annual average generating capacity presently installed or committed plus firm contract commitments are as follows:

	<u>MPC Share Gross nameplate 2023</u>	<u>Actual Capacity Factor 2023</u>
Western Area Power Administration (including reserves)	101,000	97.0%
Milton R. Young 1	250,000	80.9%
Milton R. Young 2 (Minnkota share)	391,000	69.4%
Coyote (NMPA share)	128,100	69.6%
Miscellaneous Generators**	34,000	79.0%
Petersburg Wind	900	19.5%
Valley City Wind	900	19.5%
Langdon Wind PPA	99,000	44.3%
Langdon Wind II PPA	40,500	44.3%
Ashtabula PPA- I	99,000	41.4%
Ashtabula PPA - II	49,500	41.4%
Ashtabula II PPA	69,000	32.3%
Oliver III PPA	<u>99,250</u>	<u>48.0%</u>
	1,362,150	

Minnkota has adequate generating capacity to serve its forecasted peak demands over the next 10-year time frame.

3. Minnkota's load centers are the three distribution cooperatives in eastern North Dakota and the eight distribution cooperatives in northwestern Minnesota.

Minnkota coal resources are projected to last for at least 70 years with the present level of generation. There are no transportation problems since all the base loaded plants are mine mouth facilities.

\* Minnkota 2024 Miso load peak (year to date, June 1, 2024)

\*\* Miso accredited capacity factor

## **EXHIBIT I**

U.S. Department of Energy Form EIA-923  
(Supersedes U.S. Department of Energy Form EIA-767)  
(Supersedes FERC Form 67)

NOTICE: This report is mandatory under the Federal Energy Administration Act of 1974 (Public Law 93-275). Failure to comply may result in criminal fines, civil penalties and other sanctions as provided by law. For further information concerning sanctions and data protections see the provision on sanctions and the provision concerning confidentiality of information in the instructions. **Title 18 USC 1001 makes it a criminal offense for any person knowingly and willingly to make to any Agency or Department of the United States any false, fictitious, or fraudulent statements as to any matter within its jurisdiction.**

**SCHEDULE 1. IDENTIFICATION**

**Is this a regulated utility plant**

Yes  No

**Is this a combined heat and power plant**

Yes  No

**Enter the total plant efficiency of the combined heat and power plant**

%

**Survey Contact**

Contact Brenda Sem Submit Date 28-MAR-24  
Title Accounting Manager  
Address 5301 32nd Ave  
City/State/Zip Grand Forks ND 58201  
Email bsem@minnkota.com Phone (701) 795-4270 Fax

**Supervisor of Contact Person for Survey**

Contact Melanie Skjoiten  
Title  
Address  
City/State/Zip  
Email mskjoiten@minnkota.com Phone (701) 795-4258 Fax

**Report For**

Company Name Minnkota Power Coop, Inc  
Plant Name Milton R Young  
Plant ID 2823 Plant County Oliver  
Plant Address 3401 24th Street S.W.  
Plant City Center Plant State ND

**For contact detail go to <http://www.eia.doe.gov/oss/forms.html#eia-923>**

**SCHEDULE 6. NONUTILITY ANNUAL SOURCE AND DISPOSITION OF ELECTRICITY**

(Instructions for SCHEDULE 6 are on page 13)

SCHEDULE 6 collects calendar year data (no monthly detail).

Report all generation in **megawatthours (MWh)** rounded to a whole number.

- |                                |   |
|--------------------------------|---|
| (1) Gross Generation (Annual)  | (4) Station Use                           |
| (2) Other Incoming Electricity | (5) Direct Use                            |
|                                | (6) Total Facility Use (4 + 5)            |
|                                | (7) Retail Sales to Ultimate Customers    |
|                                | (8) Sales for Resale (MWh)                |
|                                | (9) Provided Tolling Agreement (MWh)      |
|                                | (10) Other Outgoing Electricity           |
| (3) Total Sources (1 + 2)      | (11) Total Disposition (6 + 7 + 8+ 9+ 10) |

**Total Sources must equal Total Disposition (3 = 11)**

**Plants that cannot separate Station Use and Direct Use may enter zero in Station Use and the sum of Station Use and Direct Use in the Direct Use field.**

Types of Other Incoming Electricity  
List all of the types of incoming electricity included in (2)  
Other Incoming Electricity

Types of Other Outgoing Electricity  
List all of the types of outgoing electricity in item (10)  
Other Outgoing Electricity

**SCHEDULE 7. PART A. ANNUAL REVENUES FROM SALES FOR RESALE TOAL**

Complete Schedule 7, Part A, only if a positive value was entered on Schedule 6, Item (8): "Sales for Resale."

Sales for Resale are energy supplied to electric utilities, cooperatives, municipalities, federal and state elecctyic agencies, power marketers, or other entities, for resale to end-use consumers.

Report in thousand dollars. For example \$1,987,234 should be entered as 1,987

Annual Revenues from Sales for Resale (in thousand dollars)

**SCHEDULE 7. PART B. ANNUAL RETAIL SALES, REVENUES AND NUMBER OF CUSTOMERS FROM RETAIL SALES**

Report by state and end-use customer sectors (Residential, Commercial, industrial and Transportation).

Complete an individual Schedule 7, Part B, for each state where customers are located, only if a positive value was entered on Schedule 6, Item (7), "Retail Sales to Ultimate Customers."

**Annual Retail Sales, Revenue, and Number of Customers:**

- Retail sales are sold directly to an end-use customer (i.e., the energy is consumed by the customer, onsite, and is not resold to other customers).
- Enter annual retail sales, revenue, and number of customers for each state where customer(s) are located.
- Report Annual Retail Sales in megawatthours (Mwh), by sector.
- Report Annual Revenue in thousand dollars, by sector.
- Report Number of Customers, by sector.

State					
Items	Residential	Commercial	Industrial	Transportation	Total
Retail Sales (Mwh)					
Revenue (\$ 000's)					
Number of Customers					



**SCHEDULE 8. PART B. FINANCIAL INFORMATION RELATED TO COMBUSTION BY-PRODUCTS**

Complete an individual Schedule 8, Part B, annually, for each organically fueled thermoelectric power plant with a total steam turbine capacity greater than, or equal to, 100 megawatts.

- Data reported in Schedule 8, Part B must correspond to the combustion by-product data reported on Schedule 8, Part A.
- If actual data are not available, provide an estimate value.
- Report all values in thousand dollars, to the nearest thousand.

**Operation and Maintenance (O&M) Expenditures During Year (Thousand Dollars)**

Type	(1) Fly Ash	(2) Bottom Ash	(3) Flue Gas Desulfurization	(4) Water Pollution Abatement	(5) Other Pollution Abatement	(6) Total (1 + 2 + 3 + 4 + 5)
Collection	18,450	1,957	14,639	278		35,324
Disposal	807	943	1,590	22		3,362
Other					4,757	4,757

**Capital Expenditures for New Structures and Equipment During Year, Excluding Land and Interest Expense (Thousand Dollars)**

Type	(7) Air Pollution Abatement	(8) Water Pollution Abatement	(9) Solid/Contained Waste	(10) Other Pollution Abatement
Amount	9	0	12,626	0

**Byproduct Sales Revenue During Year (Thousand Dollars)**

Type	(11) Fly Ash	(12) Bottom Ash	(13) Fly and Bottom Ash Sold Intermingled	(14) Flue Gas Desulfurization	(15) Other Byproduct Revenue	(16) Total (11+12+13+14+15)
Amount	0	302	0	0	0	302



**SCHEDULE 8. PART C. AIR EMISSIONS CONTROL INFORMATION**

**Annual Operations**

Environmental Equipment and/or Technology Type					Status	Hours in Service	NOx Emission Rate (lbs/MMBtu)		Particulate Matter Control				Sulfur Dioxide Control				Mercury Control		Acid Gas Control
Types	PM Control ID	SO2 CONTROL ID	NOX Control ID	Mercury Control			Entire Year	May through September	Emission Rate (0.01 lb/MMBtu)	Removal Efficiency Rate at AOF	Tested Efficiency Particulate Removal (at 100% Load)	Test Date MM-YYYY	Removal Efficiency Rate at AOF	Removal Tested Efficiency (at 100% Load)	Test Date MM-YYY	Quantity of FGD Sorbent Used (nearest 0.1 thousand tons)	FGD Unit Electrical Energy Consumption	Removal Efficiency (nearest 0.1% by weight)	Emission Rate (0.01 lbs / Tbtu)
SP		FGD1		MC1	OP	8282							98.7	12-2023	16.8	9577.3	2.70		
SP		FGD2		MC2	OP	7333							94.3	12-2023	28	26110.2	3.09		

**FGD Operation and Maintenance Expenditures During Year, Excluding Electricity (Thousand Dollars)**

Flue Gas Desulfurization Unit ID	Feed Materials and Chemicals	Land and Supervision	Waste Disposal	Maintenance, Material and All Other Costs	Total
FGD1	\$3,830	\$928	\$492	\$929	\$6,179
FGD2	\$6,151	\$1,186	\$913	\$1,664	\$9,914

**SCHEDULE 8. PART D. COOLING SYSTEM INFORMATION, MONTHLY OPERATIONS**

Complete an individual Schedule 8, Part D for each thermoelectric power plant (organically fueled, nuclear and combined cycle) with a total steam capacity greater than, or equal to, 100 megawatts.

- **Complete a separate schedule for each reporting month.**
- Complete a separate row for each cooling system.
- If actual data are not available, provided an estimated value.
- If the source of cooling water is a well or municipal water system, do not complete the Cooling Water Temperature sections.

Cooling System ID	Cooling System Type	Cooling System Status	Annual Amt of Hours Chlorine in added to Service Per month (1000 lbs)	Average Monthly Rate of Cooling Water (to nearest 0.1 gallons per minute)						Cooling Water Temperature (degrees Fahrenheit)					Volume Cooling Water (to nearest 0.001 million gallons per month)			
				Div	Withdrawal	Discharge	Consumption	Method of Measure	Avg at Intake	Max at Intake	Avg at Discharge	Max at Discharge	Method of Measure	Div	Withdrawal	Discharge	Consumption	
<b>Report Month 1</b>																		
CS1	OC	OP	708	.777	0	112319	112319	0	4	50	56	66	74	1	0	4772.5	4772.5	0
<b>Report Month 2</b>																		
CS1	OC	OP	672	.723	0	106581	106581	0	4	48	58	65	74	1	0	4297.3	4297.3	0
<b>Report Month 3</b>																		
CS1	OC	OP	743	1.584	0	117841	117841	0	4	46	58	64	77	1	0	5253.4	5253.4	0
<b>Report Month 4</b>																		
CS1	OC	OP	652	.73	0	106828	106828	0	4	57	67	72	84	1	0	4178	4178	0
<b>Report Month 5</b>																		
CS1	OC	OP	716	1.421	0	113611	113611	0	4	74	83	89	108	1	0	4883	4883	0
<b>Report Month 6</b>																		
CS1	OC	OP	671	1.56	0	110044	110044	0	4	83	92	99	112	1	0	4433.4	4433.4	0

**SCHEDULE 8. PART D. COOLING SYSTEM INFORMATION, MONTHLY OPERATIONS**

Complete an individual Schedule 8, Part D for each thermoelectric power plant (organically fueled, nuclear and combined cycle) with a total steam capacity greater than, or equal to, 100 megawatts.

- **Complete a separate schedule for each reporting month.**
- Complete a separate row for each cooling system.
- If actual data are not available, provided an estimated value.
- If the source of cooling water is a well or municipal water system, do not complete the Cooling Water Temperature sections.

Cooling System ID	Cooling System Type	Cooling System Status	Annual Amt of Hours Chlorine in added to Service Per month (1000 lbs)	Average Monthly Rate of Cooling Water (to nearest 0.1 gallons per minute)						Cooling Water Temperature (degrees Fahrenheit)					Volume Cooling Water (to nearest 0.001 million gallons per month)			
				Div	Withdrawal	Discharge	Consumption	Method of Measure	Avg at Intake	Max at Intake	Avg at Discharge	Max at Discharge	Method of Measure	Div	Withdrawal	Discharge	Consumption	
<b>Report Month 7</b>																		
CS1	OC	OP	744	1.958	0	118000	118000	0	4	86	93	104	112	1	0	5267.5	5267.5	0
<b>Report Month 8</b>																		
CS1	OC	OP	744	2.024	0	118000	118000	0	4	81	92	98	112	1	0	5267.5	5267.5	0
<b>Report Month 9</b>																		
CS1	OC	OP	678	1.937	0	111183	111183	0	4	78	82	94	105	1	0	4525.6	4525.6	0
<b>Report Month 10</b>																		
CS1	OC	OP	523	1.285	0	82974	82974	0	4	66	81	92	110	1	0	2604.5	2604.5	0
<b>Report Month 11</b>																		
CS1	OC	OP	360	.663	0	59000	59000	0	4	53	61	85	98	1	0	1274.7	1274.7	0
<b>Report Month 12</b>																		
CS1	OC	OP	372	.655	0	59000	59000	0	4	51	56	75	91	1	0	1316.9	1316.9	0

**SCHEDULE 8. PART D. COOLING SYSTEM INFORMATION, MONTHLY OPERATIONS**

Complete an individual Schedule 8, Part D for each thermoelectric power plant (organically fueled, nuclear and combined cycle) with a total steam capacity greater than, or equal to, 100 megawatts.

- **Complete a separate schedule for each reporting month.**
- Complete a separate row for each cooling system.
- If actual data are not available, provided an estimated value.
- If the source of cooling water is a well or municipal water system, do not complete the Cooling Water Temperature sections.

Cooling System ID	Cooling System Type	Cooling System Status	Annual Amt of Hours Chlorine in added to Service Per month (1000 lbs)	Average Monthly Rate of Cooling Water (to nearest 0.1 gallons per minute)						Cooling Water Temperature (degrees Fahrenheit)					Volume Cooling Water (to nearest 0.001 million gallons per month)			
				Div	Withdrawal	Discharge	Consumption	Method of Measure	Avg at Intake	Max at Intake	Avg at Discharge	Max at Discharge	Method of Measure	Div	Withdrawal	Discharge	Consumption	
<b>Report Month 1</b>																		
CS2	OC	OP	744	1.226	0	250000	250000	0	4	48	54	65	74	1	0	11160	11160	0
<b>Report Month 2</b>																		
CS2	OC	OP	506	.815	0	170148	170148	0	4	47	57	72	101	1	0	5169.4	5169.4	0
<b>Report Month 3</b>																		
CS2	OC	OP	475	1.582	0	159597	159597	0	4	47	57	62	77	1	0	4548.1	4548.1	0
<b>Report Month 4</b>																		
CS2	OC	OP	720	1.455	0	241935	241935	0	4	55	65	68	84	1	0	10451.6	10451.6	0
<b>Report Month 5</b>																		
CS2	OC	OP	744	2.007	0	250000	250000	0	4	74	83	89	103	1	0	11160	11160	0
<b>Report Month 6</b>																		
CS2	OC	OP	618	1.943	0	207591	207591	0	4	83	91	98	111	1	0	7694.8	7694.8	0

**SCHEDULE 8. PART D. COOLING SYSTEM INFORMATION, MONTHLY OPERATIONS**

Complete an individual Schedule 8, Part D for each thermoelectric power plant (organically fueled, nuclear and combined cycle) with a total steam capacity greater than, or equal to, 100 megawatts.

- **Complete a separate schedule for each reporting month.**
- Complete a separate row for each cooling system.
- If actual data are not available, provided an estimated value.
- If the source of cooling water is a well or municipal water system, do not complete the Cooling Water Temperature sections.

Cooling System ID	Cooling System Type	Cooling System Status	Annual Amt of Hours Chlorine in added to Service Per Water (1000 lbs)	Average Monthly Rate of Cooling Water (to nearest 0.1 gallons per minute)						Cooling Water Temperature (degrees Fahrenheit)					Volume Cooling Water (to nearest 0.001 million gallons per month)			
				Div	Withdrawal	Discharge	Consumption	Method of Measure	Avg at Intake	Max at Intake	Avg at Discharge	Max at Discharge	Method of Measure	Div	Withdrawal	Discharge	Consumption	
<b>Report Month 7</b>																		
CS2	OC	OP	744	2.894	0	250000	250000	0	4	85	93	104	114	1	0	11160	11160	0
<b>Report Month 8</b>																		
CS2	OC	OP	454	1.862	0	152413	152413	0	4	80	92	83	113	1	0	4147.9	4147.9	0
<b>Report Month 9</b>																		
CS2	OC	OP	654	3.162	0	219788	219788	0	4	77	82	91	100	1	0	8265.7	8265.7	0
<b>Report Month 10</b>																		
CS2	OC	OP	659	2.46	0	221500	221500	0	4	65	81	76	100	1	0	8760.6	8760.6	0
<b>Report Month 11</b>																		
CS2	OC	OP	720	1.99	0	241935	241935	0	4	52	60	63	78	1	0	10451.6	10451.6	0
<b>Report Month 12</b>																		
CS2	OC	OP	692	1.793	0	232433	232433	0	4	49	55	63	72	1	0	9646.7	9646.7	0

**SCHEDULE 9. COMMENTS**  
(Instructions for SCHEDULE 9. are on page 20.)

<b>Schedule</b>	<b>Part</b>	<b>Item</b>	<b>Comments</b>
8	C	OT	B1 Oxidize Halide
8	C	OT	B2 Oxidize Halide

**Generator Retirement Dates**

<b>Generator Id</b>	<b>Retirement Month</b>	<b>Retirement Year</b>	<b>Comments</b>
			<b>Changes in Ownership (Provide name of purchaser and date sold.)</b>

**ERRORS**

<b>Purchase Type</b>	<b>Fuel</b>	<b>Schedule</b>	<b>Prime Mover</b>	<b>Equipment ID</b>	<b>Rpt Month</b>	<b>Supplier</b>	<b>Error Number &amp; Description</b>	<b>Ranges</b>	<b>Override Comment</b>
		8C		FGD1/S			851 The Removal Efficiency tested at 100% load for sulfur dioxide is outside the expected range of 50%-99%. If correct, enter a comment to explain data out of typical range.		Input is not out of range, input is at 98.7% which is within the 50-99% range

**EXHIBIT II**

Federal Energy Regulatory Commission Form FERC-714  
(Supersedes FERC Form 12)



### Annual Electric Balancing Authority Area and Planning Area Report

For the Year Ending December 31, 2023

**Part I - Schedule 1. Identification and Certification**

**1. Respondent Identification:**

Code:  
12658

Name:  
Minnkota Power Cooperative, Inc.

**2. Respondent Type: (Please check appropriate box and fill in name)**

Part I: Balancing Authority Area (Complete Parts I, II, and IV)

Unit dispatch is not based on the economic dispatch of thermal units (i.e., a system lambda is not calculated)

Balancing Authority Area Name:

Part II: Planning Area (Complete Parts I, III, and IV)

Planning Area Name:  
Minnkota Power Cooperative, Inc.

**3. Respondent Mailing Address:**

5301 32nd Ave South, Grand Forks, ND 58201

**4. Contact Person:**

Name:  
Dan Trebil

Title:  
Manager Energy Supply

E-mail address:  
dtrebil@minnkota.com

Telephone #:  
701-795-4424

Ext:

**5. Certifying Official:**

Name:  
Todd Sailer

Title:  
Vice President, Power Supply

Date:  
05/21/2024

This report is an  Original  Revised Filing

**Annual Electric Balancing Authority Area and Planning  
Area Report**

**For the Year Ending December 31, 2023**

**Part II - Schedule 1. Generating Plants Included in Reporting Balancing Authority Area**

Under the name of its operating electric utility, list all generating plants (1) within the respondent's balancing authority area which are controlled, metered or for which the required information is otherwise available to balancing authority area operators and (2) dynamically scheduled plants or units outside the balancing authority area. Specifically identify dynamically scheduled plants. Report only plant totals with generators in an operating or standby status. Provide totals for columns (d) and (e) as a last line. The total in column (d) should equal the value in column (c) on Schedule 2 for the month of the annual peak demand. The total in column (e) should equal the value in column (f) on Schedule 3 for the month of the annual peak demand. Any differences must be explained in a footnote. Refer to the Form 714 instructions for specific guidelines.

Line No. (a)	Electric Utility Name (b)	Plant Name (c)	Plant Available Capacity at the Hour of the Annual Peak Demand on Net Energy for Load (MW)	Integrated Net Load on the Plant at the Hour of the Annual Peak Demand Based on Net Energy for Load (MW)
			(d)	(e)
1				
2				
3				
4				
5				
6				
7				
8				
9				
10				
11				
12				
13				
14				
15				
16				
17				
18				
19				
20				
21				
22				
23				
24				
25				
		TOTAL		

**Annual Electric Balancing Authority Area and Planning  
 Area Report**

For the Year Ending December 31, 2023

Part II - Schedule 2. Balancing Authority Area Monthly Capabilities at Time of Monthly Peak Demand

The peak demand and other terms used in this schedule are defined in the Form 714 instructions. Please first read the instructions, then complete this Schedule. The value in column (c) for the month of the annual peak demand should equal the total in column (d) in Schedule 1. Any difference must be explained in a footnote.

Net Capability at the Time of the Monthly Peak Demand, Based on Balancing Authority Area Area Net Energy For Load (NEL)										
Line No. (a)	Month (b)	Net Capability from Plants Reported on Schedule II					External to the Balancing Authority Area Net Unit or Firm Capability (MW)			Total Capability (g + h + i) (MW) (j)
		Available Capability (MW) (c)	Unavailable Capability Due to:			Total (c + d + e + f) (MW) (g)	Available (MW) (h)	Not Available (MW) (i)		
			Planned Outage and Derating (MW) (d)	Unplanned Outage and Derating (MW) (e)	Other Outage and Derating (MW) (f)					
1	Jan									
2	Feb									
3	Mar									
4	Apr									
5	May									
6	Jun									
7	Jul									
8	Aug									
9	Sep									
10	Oct									
11	Nov									
12	Dec									

**Annual Electric Balancing Authority Area and Planning  
Area Report**

Utility Code:12658  
Utility Name:Minnkota Power Cooperative, Inc.

For the Year Ending December 31, 2023

**Part II - Schedule 3. Balancing Authority Area Net Energy for Load and Peak Demand Sources by Month**

Enter the monthly "Net Energy for Load" which is the amount of energy that the balancing authority area requires internally including balancing authority area losses. The total in column (d) should equal the difference in the totals for columns (e) minus (f) on Schedule 5. The value in column (f) for the month of the annual peak demand should equal the total in column (e) in Schedule 1. Any differences must be explained in a footnote. Refer to the Form 714 instructions for specific guidelines.

Line No. (a)	Month (b)	Balancing Authority Area Net Generation (MWh) (c)	Net Actual Interchange (MWh) (d)	Net Energy for Load (MWh) (c + d) (e)	Balancing Authority Area Area Load Sources at Time of Balancing Authority Area Area Monthly Peak Demand, Based on Net Energy For Load (NEL)					Monthly Minimum Demand (MW) (k)
					Output of Generating Plants (MW) (f)	Unit or Firm Purchases (MW) (g)	Unit or Firm Sales (MW) (h)	Net Non-Firm & Inadvertent (MW) (i)	Monthly Peak Demand (MW) (f + g - h + i) (j)	
1	January									
2	February									
3	March									
4	April									
5	May									
6	June									
7	July									
8	August									
9	September									
10	October									
11	November									
12	December									
13	Total									

**Annual Electric Balancing Authority Area and Planning  
 Area Report**

Utility Code:12658  
 Utility Name:Minnkota Power Cooperative, Inc.

**For the Year Ending December 31, 2023**

**Part II - Schedule 4. Adjacent Balancing Authority Area Interconnections**

Identify on this schedule: each balancing authority area with which the respondent balancing authority area has actual or scheduled interchange of energy, in column (b); the total annual megawatthours (MWh) of the scheduled interchange that were received by the respondent balancing authority area through all interconnection points with each balancing authority area, in column (c); the MWh of scheduled interchange delivered to each balancing authority area, in column (d); the MWh of total annual actual interchange received and delivered within each adjacent balancing authority area, in columns (e) and (f). Provide totals for columns (c), (d), (e) and (f). The difference in the totals for columns (e) minus (f) should equal the total in column (d) on Schedule 3. Any difference must be explained in a footnote. Refer to the Form 714 instructions for specific guidelines.

Line No. (a)	Name of Adjacent Balancing Authority Area (b)	Balancing Authority Area Interconnection Line or Bus Names (c)	Line or Bus Voltage (kV) (d)
1			
2			
3			
4			
5			
6			
7			
8			
9			
10			
11			
12			
13			
14			
15			
16			
17			
18			
19			
20			
21			
22			
23			
24			
25			
26			
27			
28			
29			
30			

**Annual Electric Balancing Authority Area and Planning  
 Area Report**

**For the Year Ending December 31, 2023**

**Part II - Schedule 5. Balancing Authority Area Scheduled and Actual Interchange**

Identify on this schedule: each balancing authority area with which the respondent balancing authority area has actual or scheduled interchange of energy, in column (b); the total annual megawatt-hours (MWh) of the scheduled interchange that were received by the respondent balancing authority area through all interconnection points with each balancing authority area, in column (c); the MWh of scheduled interchange delivered to each balancing authority area, in column (d); the MWh of total annual actual interchange received and delivered within each adjacent balancing authority area, in columns (e) and (f). Provide totals for columns (c), (d), (e) and (f). The difference in the totals for columns (e) minus (f) should equal the total in column (d) on Schedule 3. Any difference must be explained in a footnote. Refer to the Form 714 instructions for specific guidelines.

Line No. (a)	Name of Balancing Authority Area (b)	Scheduled Interchange Between Balancing Authority Area Areas (MWh)		Actual Interchange Between Adjacent Balancing Authority Area Areas (MWh)	
		Received (c)	Delivered (d)	Received (e)	Delivered (f)
1					
2					
3					
4					
5					
6					
7					
8					
9					
10					
11					
12					
13					
14					
15					
16					
17					
18					
19					
20					
21					
22					
23					
24					
25					
	TOTAL				













**Annual Electric Balancing Authority Area and Planning  
Area Report**

For the Year Ending December 31, 2023

Part II - Schedule 6. Description of Economic Dispatch

Disclosure of How Respondent Calculates System Lambda

**Annual Electric Balancing Authority Area and Planning  
Area Report**

For the Year Ending December 31, 2023

Part III - Schedule 1. Electric Utilities That Compose the Planning Area

Enter the name of each entity, including the respondent, that forms the planning area for which this report is being prepared and their coincident summer and winter peak demands in megawatts. Refer to the Form 714 instructions for specific guidelines.

Line No. (a)	Electric Utility Name (b)	Electric Utility Coincident Peak Demand (MW) (MWh)	
		Summer (c)	Winter (d)
1	Beltrami Electric Coop.	76	107
2	Red River Electric Coop.	23	31
3	Roseau Electric Coop.	25	35
4	Wild Rice Electric Coop.	49	71
5	Cass County Electric Coop.	259	246
6	Cavalier Rural Electric Coop.	9	7
7	Cleanwater Polk Electric Coop.	15	22
8	Northern Municipal Power Agency	84	74
9	Nodak Electric Coop.	177	190
10	North Star Electric Coop.	18	29
11	PKM Electric Coop.	22	25
12	Red Lake Electric Coop.	21	26

**Annual Electric Balancing Authority Area and Planning  
Area Report**

Utility Code:12658  
Utility Name:Minnesota Power Cooperative, Inc.

**For the Year Ending December 31, 2023**

**Part III - Schedule 2. Planning Area Hourly Demand**

Respondents must provide the following data: the planning area's actual hourly demand, in megawatts, for each hour of the year starting with 1 a.m. January 1 as more fully described in the Form 714 instructions. In column (b) indicate the time zone and the days for which daylight savings time was observed. This schedule will have 365 rows for the report year (366 rows for a leap year). For hours when this information is not available, enter "0.00" and provide, as a footnote to those hours, an explanation describing the reason for the unavailability of the data.

Date (a)	Time Zone (b)	0100 (c)	0200 (d)	0300 (e)	0400 (f)	0500 (g)	0600 (h)	0700 (i)	0800 (j)	0900 (k)	1000 (l)	1100 (m)	1200 (n)	1300 (o)	1400 (p)	1500 (q)	1600 (r)	1700 (s)	1800 (t)	1900 (u)	2000 (v)	2100 (w)	2200 (x)	2300 (y)	2400 (z)
2023-01-01	CST	677.834	667.027	660.025	653.751	654.155	658.331	669.955	679.298	671.41	686.804	697.86	701.894	696.269	745.854	724.623	713.111	713.834	721.991	728.042	730.426	723.251	711.741	695.62	666.063
2023-01-02	CST	705.177	684.742	676.749	674.662	675.025	681.086	699.771	728.459	723.656	740.866	753.518	761.719	757.285	802.45	783.596	769.728	765.997	792.936	818.587	823.44	817.68	803.429	779.9	748.969
2023-01-03	CST	793.656	773.27	763.269	760.25	760.014	765.868	798.145	853.704	849.417	846.639	839.922	830.61	819.901	869.802	849.201	833.797	832.111	849.246	840.676	840.684	831.713	819.24	798.846	766.551
2023-01-04	CST	809.602	798.364	783.533	777.407	772.684	779.443	798.248	845.996	846.433	841.402	831.041	800.28	780.282	844.682	830.846	822.538	822.157	845.784	838.238	834.04	844.22	833.065	810.631	774.614
2023-01-05	CST	814.863	791.917	777.914	769.663	763.852	753.27	773.45	830.055	838.614	835	825.14	811.883	790.229	823.657	795.115	781.579	789.005	821.069	830.128	834.576	834.253	825.184	810.177	775.508
2023-01-06	CST	820.776	794.588	782.1	772.628	773.295	778.671	762.977	742.302	650.834	629.902	712.76	739.917	747.703	780.647	821.923	818.567	795.194	754.937	753.53	756.33	847.12	846.431	830.192	808.643
2023-01-07	CST	858.956	833.986	818.412	803.454	798.245	793.765	802.238	817.643	785.733	797.266	809.158	805.486	786.795	829.264	801.903	770.337	761.063	797.497	817.018	820.697	812.118	799.927	784.74	760.929
2023-01-08	CST	810.355	785.144	765.141	755.367	749.222	750.03	756.047	773.883	757.918	770.63	769.423	755.15	739.088	769.793	728.364	707.098	710.346	754.323	782.437	792.539	792.207	779.723	760.093	732.19
2023-01-09	CST	775.731	758.07	749.896	748.117	747.405	757.16	785.557	842.922	842.495	829.563	811.51	794.516	773.964	811.258	794.092	787.451	785.213	801.118	801.041	806.625	805.224	794.612	767.779	731.719
2023-01-10	CST	766.771	739.079	721.162	709.606	703.893	705.615	691.074	678.039	681.001	664.502	730.931	748.295	739.299	777.033	761.717	754.955	757.556	770.047	765.956	763.216	754.421	741.228	718.374	687.192
2023-01-11	CST	716.638	689.5	675.02	664.544	662.244	667.154	695.724	749.424	759.772	752.542	744.459	740.975	732.216	772.503	761.329	756.517	758.352	778.669	781.85	781.819	775.523	762.928	738.132	709.033
2023-01-12	CST	750.32	728.76	713.938	704.646	702.574	710.674	741.042	795.605	803.69	795.123	786.396	778.41	767.298	814.903	797.552	784.555	786.538	810.663	815.996	823.388	820.696	813.126	790.699	760.441
2023-01-13	CST	803.993	780.562	761.107	753.483	753.583	752.761	780.203	835.244	833.356	793.578	735.139	807.98	781.23	819.653	792.633	783.39	787.997	815.118	813.65	811.799	805.39	796.074	779.147	754.46
2023-01-14	CST	798.481	771.726	752.223	741.872	730.71	724.937	733.136	748.587	734.012	751.414	758.523	750.577	739.003	779.816	759.431	748.769	745.6	750.182	748.627	749.034	737.833	722.921	701.382	674.306
2023-01-15	CST	714.946	690.057	663.39	649.866	643.513	641.865	648.188	662.798	660.458	675.573	679.862	679.315	671.301	701.744	680.458	670.617	670.637	684.742	701.126	699.919	700.268	685.931	668.843	642.896
2023-01-16	CST	674.669	654.022	643.471	638.469	636.219	642.103	665.95	706.756	714.208	720.576	724.787	710.727	704.97	744.402	725.475	721.137	734.009	738.807	743.836	747.062	739.539	724.642	698.817	664.358
2023-01-17	CST	694.111	669.994	655.328	644.858	645.407	654.488	680.417	720.995	730.786	721.883	717.938	722.048	726.28	780.332	766.309	753.378	751.641	765.796	759.543	763.841	754.549	747.411	723.131	683.969
2023-01-18	CST	722.195	701.518	686.647	672.348	662.55	668.52	696.615	746.192	752.042	738.243	735.358	729.108	724.633	764.346	750.687	736.237	720.074	733.848	728.275	727.99	721.662	727.985	687.753	649.63
2023-01-19	CST	691.174	668.876	652.312	644.495	643.694	652.684	678.406	734.798	744.323	731.524	726.302	722.165	713.058	755.479	741.611	718.744	709.634	727.253	734.77	743.8	738.215	726.726	704.437	673.422
2023-01-20	CST	713.276	688.487	672.968	661.799	660.542	665.61	704.026	755.943	762.557	749.615	744.179	735.391	724.439	767.146	752.608	740.902	739.583	732.007	673.483	678.052	664.714	719.742	710.285	684.733
2023-01-21	CST	720.161	697.423	683.291	676.647	673.573	673.877	681.885	688.506	695.622	720.935	721.179	706.809	686.096	717.991	685.923	667.591	666.815	684.825	695.294	706.25	708.893	705.781	704.228	696.016
2023-01-22	CST	756.818	742.191	733.958	729.053	729.868	733.074	741.697	760.208	745.109	758.473	758.802	740.756	709.09	748.215	717.1	696.397	704.021	746.291	777.929	802.404	798.71	784.991	765.964	731.977
2023-01-23	CST	774.355	751.729	733.359	714.559	702.358	691.641	709.335	756.878	762.361	752.695	746.539	744.531	735.071	767.866	750.996	732.068	749.989	758.738	758.307	764.769	760.868	750.793	728.392	700.105
2023-01-24	CST	727.56	700.057	689.222	686.027	688.529	700.869	734.485	790.976	794.588	783.083	772.992	763.934	753.897	794.945	782.152	771.756	769.279	776.868	766.757	773.206	761.873	749.15	731.511	710.367
2023-01-25	CST	755.545	742.25	736.725	737.33	744.985	762.76	805.804	864.718	842.784	827.444	810.001	785.489	810.002	851.784	818.803	781.507	775.597	794.519	819.088	857.114	853.685	840.359	814.756	779.349
2023-01-26	CST	821.413	796.434	777.274	765.966	755.068	764.459	792.187	846.547	842.493	830.107	815.143	805.611	794.586	843.449	826.643	820.822	824.006	836.125	822.328	828.275	815.22	795.262	763.123	720.392
2023-01-27	CST	752.586	720.387	704.322	701.99	703.752	718.534	752.682	807.973	813.314	818.143	814.138	798.992	781.976	832.346	811.717	799.324	814.922	834.767	832.18	843.196	841.972	838.462	827.924	811.027
2023-01-28	CST	873.677	857.095	849.408	841.586	825.643	826.784	836.343	859.598	836.656	841.864	845.347	835.447	827.633	886.787	865.501	849.618	845.669	861.913	856.575	878.387	874.721	867.59	853.83	836.887
2023-01-29	CST	904.784	890.593	883.105	881.421	881.277	882.244	887.669	901.904	871.159	883.291	880.025	860.658	844.379	910.628	892.137	871.024	867.137	884.698	885.251	910.556	908.731	894.248	881.763	857.368
2023-01-30	CST	922.063	901.904	891.09	888.11	891.688	903.433	932.02	987.103	970.634	953.155	930.581	909.747	887.098	942.509	919.997	904.313	898.483	917.628	789.485	747.282	717.255	701.289	682.279	735.857
2023-01-31	CST	933.681	939.896	910.648	896.002	885.953	888.213	910.784	961.298	939.9	915.863	893.73	872.619	854.458	906.66	887.726	878.31	833.576	776.588	763.574	781.961	777.039	808.662	845.587	829.986
2023-02-01	CST	889.022	869.332	858.141	851.086	833.619	837.218	850.202	803.989	843.202	887.224	863.863	841.029	814.684	859.27	830.878	808.412	798.373	814.956	819.213	848.288	845.466	838.072	818.779	794.456
2023-02-02	CST	840.651	816.82	807.604	807.267	818.762	844.121	883.988	945.812	939.452	919.209	895.6	877.894	871.432	941.568	923.329	909.973	907.664	929.73	814.421	757.193	721.278	696.208	753.736	975.079
2023-02-03	CST	955.885	930.477	917.362	904.294	896.408	896.533	872.254	857.273	837.328	921.034	930.07	923.48	912.596	976.214	955.639	937.905	931.204	938.675	908.229	917.421	905.586	895.863	873.04	853.041
2023-02-04	CST	902.757	871.165	848.157	832.145	821.914	818.29	822.31	830.87	805.735	811.365	805.016	782.098	752.992	786.291	750.39	724.665	717.994	730.186	730.227	748.6	745.454	736.125	721.068	705.097
2023-02-05	CST	740.747	723.275	709.728	702.968	702.777	704.14	708.715	729.079	720.389	733.713	737.28	729.499	723.025	767.922	741.704	727.595	724.336	743.485	751.187	776.272	777.518	764.871	746.455	719.713
2023-02-06	CST	766.855	745.151	734.374	730.192	726.095	728.05	751.143	803.144	802.146	779.418	765.653	752.887	736.971	769.833	748.527	732.962	726.442	734.982	728.451	744.626	735.86	723.882	707.516	682.205
2023-02-07	CST	707.156	685.079	679.267	678.628	684.912																			

2023-02-12	CST	654.534	634.716	624.409	620.505	625.886	636.638	651.352	674.006	669.347	680.775	675.678	663.962	653.8	684.262	662.833	648.774	644.302	654.673	660.167	676.025	673.571	671.716	664.889	656.792
2023-02-13	CST	689.296	670.608	664.171	663.083	668.267	678.925	710.325	770.193	773.739	755.53	734.774	710.893	700.978	726.707	706.603	694.004	682.96	688.23	693.764	724.08	721.956	709.33	689.493	658.334
2023-02-14	CST	672.983	642.79	632.975	631.416	634.118	645.763	668.469	715.569	724.185	699.955	674.35	663.585	657.657	693.247	681.894	675.167	678.885	695.072	696.542	717.465	722.85	720.521	706.885	683.45
2023-02-15	CST	732.632	724.059	725.822	730.242	736.153	750.968	783.434	832.525	826.703	827.891	820.681	801.157	783.41	834.187	813.234	797.661	789.819	793.82	788.819	829.81	833.995	824.791	803.546	771.436
2023-02-16	CST	824.503	804.021	794.198	787.45	782.716	793.189	824.32	880.858	825.356	779.551	813.653	798.599	775.653	822.075	795.985	779.677	773.571	788.42	786.841	827.856	833.945	828.264	820.401	798.992
2023-02-17	CST	857	837.208	829.809	822.49	820.006	830.072	852.898	899.066	879.49	857.085	813.553	793.922	793.443	837.467	804.698	771.25	758.376	759.546	741.332	756.046	744.291	727.893	707.872	684.58
2023-02-18	CST	718.825	694.5	679.896	673.74	670.791	678.793	693.199	717.657	708.19	718.526	717.153	705.692	690.154	716.764	688.29	673.729	673.134	686.914	682.26	699.27	694.562	683.834	671.055	650.876
2023-02-19	CST	681.711	661.805	656.34	649.312	646.6	659.113	680.172	711.584	704.017	719.691	723.011	721.268	714.184	770.144	746.522	730.101	725.201	741.886	745.558	779.603	787.798	780.852	762.697	739.407
2023-02-20	CST	795.762	775.512	757.42	756.783	761.401	766.315	785.703	824.758	807.454	802.138	798.167	790.08	784.947	826.947	813.069	801.829	807.583	822.062	817.239	842.945	844.373	831.588	808.234	779.355
2023-02-21	CST	832.035	817.012	807.236	806.8	809.804	822.435	856.045	913.01	892.917	850.708	819.851	800.835	800.045	864.471	850.287	837.495	829.686	843.196	829.364	858.527	862.749	855.426	835.417	807.371
2023-02-22	CST	865.99	851.955	840.67	837.139	843.4	855.69	898.838	956.767	936.284	917.612	898.837	884.162	866.748	921.98	904.593	882.666	886.881	901.69	881.996	904.581	903.858	891.258	867.581	835.377
2023-02-23	CST	894.284	871.747	857.469	853.543	843.214	811.807	853.82	909.417	882.795	889.022	874.555	871.754	864.79	940.504	918.869	902.687	896.876	897.675	871.843	893.618	892.277	878.912	858.966	827.821
2023-02-24	CST	886.066	869.098	862.426	860.876	862.431	829.591	759.791	720.205	668.194	657.053	684.426	662.659	733.581	878.539	874.746	853.05	798.896	741.399	714.695	730.852	730.467	820.733	813.71	794.528
2023-02-25	CST	855.112	834.148	820.854	814.227	810.958	796.083	798.446	818.758	800.799	800.823	791.123	772.557	757.394	798.628	764.846	747.24	746.487	748.14	733.879	768.238	780.113	776.207	762.419	747.381
2023-02-26	CST	808.473	789.556	781.538	776.132	774.912	776.319	782.472	801.249	770.462	772.631	752.372	731.743	719.524	766.322	738.698	718.744	716.596	728.102	727.346	757.082	764.257	749.101	721.597	688.655
2023-02-27	CST	726.326	700.423	681.792	673.813	669.092	673.39	698.244	750.908	754.392	744.493	738.137	735.607	726.167	754.543	735.586	719.702	700.519	670.348	662.632	694.73	705.789	698.808	696.345	688.84
2023-02-28	CST	730.886	713.901	709.532	708.308	710.022	722.406	755.613	804.553	787.571	752.695	722.363	703.096	688.587	720.931	703.755	698.304	713.662	743.278	751.831	772.838	778.201	768.385	748.144	719.716
2023-03-01	CST	757.46	739.717	724.929	719.034	722.111	734.974	763.64	812.572	802.075	803.603	799.122	792.947	784.122	824.587	771.681	752.973	732.296	739.703	721.799	763.152	821.557	813.052	797.788	781.294
2023-03-02	CST	837.657	822.831	816.548	814.792	812.779	818.884	849.19	904.581	882.107	861.37	830.61	801.139	781.387	829.533	808.947	793.954	793.474	794.832	783.729	802.587	807.216	797.319	776.969	749.023
2023-03-03	CST	789.598	766.289	754.034	745.52	742.565	748.19	771.275	817.904	805.112	784.529	751.706	722.343	700.944	723.49	702.477	681.596	672.653	677.458	670.197	695.171	706.874	696.949	690.345	674.893
2023-03-04	CST	710.634	696.7	687.063	684.194	685.84	695.439	707.93	724.744	711.866	717.439	706.352	689.689	670	690.703	657.046	636.467	625.37	629.552	632.158	664.124	679.918	676.175	661.907	651.731
2023-03-05	CST	700.313	687.951	683.188	690.584	695.015	700.134	712.035	729.983	708.384	718.213	698.236	680.661	678.299	711.695	687.072	667.81	663.591	681.601	691.703	722.16	726.205	714.651	691.464	662.712
2023-03-06	CST	696.106	682.96	679.35	684.729	691.438	708.048	746.353	798.307	798.253	785.212	765.223	749.467	744.628	790.046	774.316	766.213	759.379	770.115	769.147	806.266	823.918	816.872	800.962	774.099
2023-03-07	CST	829.112	819.024	810.471	805.366	803.89	813.877	844.859	897.387	876.151	850.227	830.851	808.785	789.739	835.02	813.728	804.078	802.394	809.541	793.684	813.811	817.449	802.94	776.556	742.979
2023-03-08	CST	769.84	741.841	719.445	709.381	704.69	707.888	723.221	777.879	774.828	778.435	765.372	749.196	739.707	762.362	739.756	735.439	754.071	769.208	762.56	779.066	769.818	755.715	723.307	704.282
2023-03-09	CST	743.138	717.167	701.498	691.474	684.07	675.262	699.042	761.06	772.437	762.148	749.186	738.579	726.717	752.119	732.538	724.735	726.37	739.262	732.43	745.192	752.766	742.986	725.271	698.097
2023-03-10	CDT	730.834	707.423	694.073	686.288	682.034	666.976	650.05	694.88	752.594	743.332	722.541	702.101	686.335	707.405	686.236	673.864	640.554	647.95	646.695	669.432	695.105	699.21	691.493	677.082
2023-03-11	CDT	720.557	702.204	691.684	690.336	693.396	696.774	711.003	719.368	700.194	717.674	725.992	730.241	726.113	771.885	750.444	737.518	743.111	769.87	740.201	754.559	737.175	716.795	699.721	689.724
2023-03-12	CDT	733.762	709.475	697.696	700.788	702.779	692.099	698.762	684.97	693.796	702.146	707.438	702.745	745.46	717.821	704.515	700.82	710.51	706.602	721.438	744.067	756.769	743.373	717.357	754.851
2023-03-13	CDT	738.721	733.157	729.744	732.85	743.963	775.811	835.495	826.051	793.355	792.153	768.78	739.023	771.918	748.386	712.23	692.933	688.596	684.25	707.607	736.958	762.243	752.75	725.681	758.735
2023-03-14	CDT	758.886	761.583	762.135	767.433	772.108	791.83	842.224	821.359	788.406	763.723	755.857	736.899	765.978	735.808	714.21	705.234	703.372	693.543	705.137	728.62	739.392	730.199	710.085	738.561
2023-03-15	CDT	714.975	698.941	688.889	686.638	694.55	719.942	765.26	771.06	760.763	746.605	731.812	715.26	736.828	710.004	692.17	691.808	695.376	682.52	688.47	702.09	715.965	699.853	675.352	696.791
2023-03-16	CDT	676.316	668.082	660.273	651.818	654.576	680.045	738.94	749.425	752.987	755.306	748.249	733.521	772.242	749.737	743.468	732.058	742.878	730.28	742.726	767.317	785.865	775.973	749.282	798.279
2023-03-17	CDT	783.288	779.543	779.071	780.287	786.72	814.344	859.12	809.477	770.945	827.738	823.551	806.852	857.641	835.328	813.256	801.598	805.263	782.111	786.907	796.321	800.897	784.275	765.883	818.965
2023-03-18	CDT	796.273	779.567	771.95	766.202	767.41	772.754	781.614	756.517	768.094	766.349	752.308	736.858	771.488	740.079	714.357	700.023	697.523	677.837	686.356	714.733	741.251	738.552	723.356	779.331
2023-03-19	CDT	768.869	762.525	762.723	760.602	760.921	767.777	781.193	754.851	760.443	750.366	727.145	701.49	734.756	698.727	652.378	638.793	639.24	644.101	668.064	693.855	717.297	705.421	680.93	715.579
2023-03-20	CDT	701.272	701.129	707.899	711.2	727.522	761.838	825.786	827.39	807.513	779.369	759.346	736.407	766.738	738.56	716.402	704.356	703.921	693.157	706.126	729.004	750.126	740.707	716.148	758.608
2023-03-21	CDT	745.003	738.488	736.78	739.087	750.495	782.58	836.703	829.263	810.978	786.298	756.208	723.018	752.26	728.231	707.273	693.185	703.177	705.507	715.706	732.184	739.22	719.112	685.319	703.001
2023-03-22	CDT	678.525	661.134	656.242	656.868	664.254	692.017	740.063	749.666	751.616	741.644	723.492	705.072	726.942	707.521	691.593	692.885	697.794	685.894	694.828	716.277	743.112	734.139	710.142	749.895
2023-03-23	CDT	736.154	726.689	724.898	730.822	745.344	776.718	837.037	829.52	809.496	780.438	751.404	727.05	759.07	732.179	711.792	697.672	696.011	677.748	689.349	717.532				

2023-03-31	CDT	684.863	672.632	667.948	666.09	671.09	697.656	751.752	758.812	751.371	736.793	713.398	693.97	719.972	699.387	684.032	677.76	681.747	670.349	671.818	680.594	695.87	689.102	672.503	704.8
2023-04-01	CDT	689.537	682.762	677.9	680.66	686.561	700.839	724.062	711.963	710.014	701.288	682.806	665.484	687.079	660.358	644.574	630.952	629.468	616.593	622.156	636.278	665.263	664.911	649.461	684.903
2023-04-02	CDT	670.83	664.102	660.104	655.174	655.469	659.92	672.19	663.694	673.861	659.48	641.721	633.733	663.606	648.092	629.256	621.409	627.661	618.699	619.34	642.974	664.881	653.117	629.177	651.399
2023-04-03	CDT	643.379	623.426	626.127	637.163	646.153	672.972	730.34	739.694	732.045	730.682	727.131	717.762	751.179	733.462	718.882	703.986	705.761	693.922	705.865	719.593	735.046	721.761	691.662	722.589
2023-04-04	CDT	702.646	690.631	681.406	677.532	679.04	699.899	739.291	682.946	685.05	683.553	742.366	743.997	775.639	752.603	739.413	740.158	751.891	744.325	742.986	737.187	738.218	721.761	693.326	733.681
2023-04-05	CDT	707.463	684.298	676.131	664.086	665.124	689.723	715.196	708.69	725.123	725.964	719.201	707.812	742.338	718.443	707.931	711.456	717.796	713.392	718.609	729.824	751.755	739.767	715.9	759.146
2023-04-06	CDT	740.277	726.308	719.746	718.96	726.642	747.509	781.868	781.268	774.829	753.802	733.121	715.727	743.47	707.016	687.961	676.694	673.362	656.196	654.946	670.042	698.364	699.689	681.684	722.045
2023-04-07	CDT	712.049	708.517	707.111	707.513	725.729	746.694	775.02	759.624	758.236	748.734	722.059	692.009	705.426	673.489	653.126	635.865	630.485	615.029	612.233	599.26	615.962	618.159	605.3	647.735
2023-04-08	CDT	635.658	632.943	634.875	640.023	650.099	661.28	681.219	665.225	666.358	660.924	649.05	633.761	651.447	623.755	603.261	590.489	569.661	563.105	571.026	582.691	601.574	601.013	589.758	609.263
2023-04-09	CDT	595.254	588.93	587.581	585.706	590.434	603.277	622.601	650.98	653.346	641.226	626.826	609.369	592.203	573.783	562.097	554.442	553.174	556.972	545.094	565.479	605.249	613.828	593.353	575.613
2023-04-10	CDT	570.162	572.285	573.533	583.335	599.226	632.2	686.642	692.747	685.213	673.045	667.304	657.571	673.686	660.525	647.325	636.637	633.992	626.713	633.7	646.885	660.984	646.729	615.746	612.805
2023-04-11	CDT	591.485	579.869	577.551	580.245	590.053	624.629	681.209	668.453	630.683	611.864	601.544	594.512	609.002	598.351	593.504	587.732	588.609	581.335	583.042	589.6	599.956	604.373	576.608	572.505
2023-04-12	CDT	555.754	550.78	547.719	552.256	568.156	604.07	661.304	663.328	632.806	613.695	598.744	593.761	591.015	586.523	579.874	571.464	578.02	578.31	577.691	587.704	611.738	615.667	594.349	571.562
2023-04-13	CDT	563.993	559.606	531.6	517.006	528.248	592.518	667.357	701.382	690.6	684.713	658.002	654.474	641.189	639.394	610.638	605.65	618.258	625.15	630.164	644.112	661.43	649.386	600.776	560.86
2023-04-14	CDT	551.477	561.748	556.245	556.462	569.71	598.527	657.58	689.998	679.188	671.905	668.169	659.575	642.373	627.997	615.016	615.709	629.208	632.555	631.133	635.306	648.933	639.464	620.839	597.836
2023-04-15	CDT	586.672	582.252	580.538	582.221	589.485	599.672	622.147	647.034	672.718	689.749	700.364	700.973	688.261	682.316	674.145	665.519	676.694	686.184	682.764	686.986	691.764	685.784	666.55	649.192
2023-04-16	CDT	631.612	624.841	623.78	625.632	628.907	636.466	653.239	670.306	691.663	699.035	690.212	680.632	669.83	659.226	660.718	630.808	640.214	662.054	661.44	670.631	685.517	671.48	640.952	619.145
2023-04-17	CDT	609.795	607.679	607.881	615.144	629.247	661.099	718.909	728.337	699.814	705.409	690.208	668.582	669.701	671.054	663.802	654.545	655.433	656.467	654.666	660.566	680.567	678.869	648.955	630.385
2023-04-18	CDT	607.489	598.212	601.548	607.262	620.729	658.919	715.824	738.616	707.899	686.084	671.098	654.241	638.897	633.481	629.882	624.007	625.204	626.43	634.057	644.701	660.681	648.746	617.478	592.092
2023-04-19	CDT	595.635	593.867	595.047	601.434	608.575	639.341	696.699	735.468	736.855	736.068	735.574	731.684	718.141	713.555	702.372	670.063	671.685	675.956	667.685	670.019	685.039	673.247	640.413	630.792
2023-04-20	CDT	621.051	612.829	597.596	595.312	601.96	634.562	695.162	732.912	727.666	722.735	726.188	722.56	712.278	703.603	688.211	702.092	712.081	723.351	709.189	697.402	704.264	709.037	683.472	659.698
2023-04-21	CDT	647.496	632.266	618.137	621.656	641.096	668.005	707.86	739.448	730.074	718.721	715.244	705.537	693.258	683.151	681.225	678.817	680.386	668.8	666.39	686.378	701.814	700.968	682.512	657.797
2023-04-22	CDT	644.39	638.405	634.364	635.231	637.855	640.281	650.399	662.995	674.073	677.825	666.507	654.746	640.826	629.501	621.586	617.434	619.276	623.354	623.558	628.203	642.269	649.09	634.158	618.822
2023-04-23	CDT	611.482	610.742	612.035	613.828	623.383	639.121	648.898	656.297	649.899	641.325	631.439	621.278	616.463	604.868	603.007	597.669	605.358	617.024	625.659	631.443	643.086	642.374	614.758	590.02
2023-04-24	CDT	585.375	586.216	591.161	598.374	613.465	649.418	705.948	732.385	710.744	685.826	674.847	664.639	652.82	647.466	641.972	636.548	639.633	647.501	647.367	650.724	663.095	664.323	639.074	617.423
2023-04-25	CDT	608.001	606.24	608.706	613.132	629.249	663.773	716.418	735.506	690.975	657.774	639.972	632.392	625.506	616.81	610.234	599.719	605.031	598.314	591.985	603.668	618.527	627.626	606.801	587.637
2023-04-26	CDT	580.117	577.377	577.529	580.786	594.308	635.345	692.491	721.057	695.392	678.105	673.857	672.964	652.371	634.406	636.97	635.888	638.241	641.966	637.188	643.944	648.619	642.178	608.854	583.68
2023-04-27	CDT	569.562	572.296	574.16	582.592	595.344	625.143	663.444	687.474	669.53	645.574	637.194	623.575	612.223	616.037	618.653	617.215	621.834	622.946	629.952	632.762	638.008	628.896	599.617	572.358
2023-04-28	CDT	557.357	551.978	551.49	557.478	567.164	598.261	648.677	683.681	674.738	662.592	650.258	642.969	619.466	621.083	609.841	601.085	604.51	599.745	588.975	581.715	588.366	591.582	577.998	563.834
2023-04-29	CDT	551.402	552.443	553.294	556.331	564.31	577.112	594.654	615.083	630.558	634.436	628.171	617.298	607.826	597.03	586.1	590.727	591.31	593.332	588.936	593.409	602.271	612.471	600.802	581.408
2023-04-30	CDT	569.136	566.382	569.185	574.465	580.943	594.515	605.106	617.308	624.133	626.17	623.845	619.365	614.023	604.154	597.652	594.499	598.024	610.145	610.964	615.473	619.776	619.231	590.155	563.393
2023-05-01	CDT	552.36	550.765	554.095	561.959	577.467	612.539	669.558	695.32	671.154	658.872	650.972	650.132	632.579	629.344	633.297	625.908	622.63	622.985	620.076	620.89	628.986	634.227	607.392	580.228
2023-05-02	CDT	567.101	564.019	568.519	574.395	588.327	628.218	682.649	688.541	641.253	620.004	611.203	604.813	600.728	595.446	587.911	581.567	578.158	577.122	571.08	576.069	590.392	599.941	577.068	544.341
2023-05-03	CDT	531.565	525.772	528.538	533.171	545.553	580.712	634.992	650.815	617.478	591.931	582.692	582.891	581.224	574.173	565.04	562.062	563.439	567.933	561.525	566.586	570.79	582.487	548.974	513.402
2023-05-04	CDT	495.014	494.599	494.936	497.769	508.476	538.423	593.857	622.648	602.432	593.101	588.044	587.363	582.636	560.959	552.481	561.599	564.348	564.856	569.231	576.971	582.45	585.985	555.354	517.24
2023-05-05	CDT	494.263	487.293	481.25	485.919	495.151	522.063	572.538	603.209	596.847	588.792	586.528	587.765	585.021	584.426	590.122	588.677	588.663	591.989	583.526	577.455	571.775	577.854	561.064	534.891
2023-05-06	CDT	508.87	499.255	495.371	489.459	489.591	505.794	524.95	554.566	577.882	595.329	601.73	599.355	585.787	580.7	576.256	572.504	576.646	579.091	577.803	576.019	572.113	564.924	547.046	522.92
2023-05-07	CDT	502.714	494.154	490.506	484.835	486.312	491.228	504.6	528.513	555.368	573.769	580.17	585.618	589.042	584.98	582.416	583.293	590.1	597.027	595.871	595.609	594.673	584.985	553.389	524.02
2023-05-08	CDT	506.046	498.847	494.494	497.937	505.817	533.243	586.403	624.517	624.1	627.256	629.144	630.643	623.483	612.726	610.318	604.013	606.939	610.38	609.939	607.453	609.505	605.264	572.577	535.811
2023-05-09	CDT	521.287	511.798	507.68	505.123	513.83	534.25	581.191	611.958	594.009	582.101	586.989	589.34	593.809	594.578	597.916	594.421								

2023-05-17	CDT	499.562	496.982	508.731	496.959	498.209	523.99	576.186	616.567	606.37	599.671	595.482	586.368	598.562	607.358	620.471	630.162	642.508	654.552	652.088	648.273	639.13	595.02	543.089	499.881
2023-05-18	CDT	494.488	495.73	488.63	484.094	486.651	495.018	524.483	569.296	584.887	593.255	603.115	611.1	602.014	567.995	564.116	585.767	603.7	614.325	614.38	616.886	609.861	580.693	556.832	545.999
2023-05-19	CDT	529.136	517.595	511.675	512.661	516.875	522.294	563.058	613.675	615.766	605.052	605.121	611.266	599.791	593.676	582.966	578.934	578.488	579.312	574.971	570.911	565.461	579.368	565.265	530.967
2023-05-20	CDT	510.079	500.32	494.592	491.827	495.092	504.733	521.177	542.64	562.075	570.938	572.973	573.16	568.832	565.37	563.873	564.183	572.201	578.906	580.419	579.61	574.335	577.856	560.03	529.186
2023-05-21	CDT	502.494	485.92	476.188	473.327	475.597	480.574	491.079	518.212	544.534	562.676	559.1	571.13	584.037	588.245	593.303	601.305	615.37	629.017	636.893	634.137	620.995	615.503	579.292	535.338
2023-05-22	CDT	505.539	489.329	479.37	474.954	476.986	499.908	550.708	590.181	588.426	588.772	598.956	610.554	617.705	638.139	647.777	651.495	670.768	680.94	683.026	674.486	661.266	656.609	629.399	580.302
2023-05-23	CDT	542.419	520.084	500.271	494.415	497.428	519.348	565.368	606.327	607.685	611.354	625.467	643.428	659.961	658.404	600.185	621.117	675.964	703.729	694.871	687.45	679.886	664.695	617.417	569.063
2023-05-24	CDT	538.626	518.966	504.757	498.655	497.924	516.811	565.762	602.88	600.157	602.744	610.68	610.74	599.973	597.528	602.918	598.443	605.664	613.763	617.172	617.477	613.399	611.363	579.66	538.195
2023-05-25	CDT	509.316	495.326	487.327	482.947	491.476	515.379	564.144	599.619	594.078	592.683	600.598	607.962	610.541	611.463	618.699	632.182	643.494	651.774	648.652	642.807	630.315	637.793	609.815	559.461
2023-05-26	CDT	526.135	507.336	490.069	485.317	486.614	501.373	548.134	593.226	606.776	621.613	638.802	655.14	665.562	677.57	677.018	681.873	688.888	679.739	656.856	653.659	636.386	631.149	602.56	558.074
2023-05-27	CDT	519.415	505.982	493.022	484.658	479.75	472.054	488.471	515.478	545.362	571.71	586.545	597.164	605.775	610.983	620.522	623.217	623.035	628.882	621.321	609.156	597.552	591.237	565.142	526.252
2023-05-28	CDT	491.441	474.643	469.817	464.839	461.15	457.169	469.805	495.776	528.168	556.812	578.17	596.039	599.354	598.379	603.902	608.987	618.582	624.894	622.748	620.163	602.36	589.266	569.5	529.7
2023-05-29	CDT	500.755	480.223	467.145	459.542	457.516	457.849	470.904	497.964	530.413	563.902	589.94	605.32	612.013	615.81	624.293	639.479	651.377	647.592	661.489	655.843	636.888	625.547	581.144	530.462
2023-05-30	CDT	500.728	482.911	475.323	472.06	474.991	492.986	542.582	594.249	614.65	635.278	654.484	674.722	683.502	690.922	691.083	660.915	623.893	620.567	610.916	686.974	681.712	664.955	619.135	568.949
2023-05-31	CDT	537.627	515.535	500.852	490.661	493.24	510.152	559.046	601.168	614.981	635.023	659.783	684.216	702.564	716.475	693.251	652.545	653.934	635.69	692.045	692.53	679.111	661.351	628.737	583.288
2023-06-01	CDT	543.146	518.808	505.136	499.208	500.093	516.773	564.272	610.112	636.878	663.306	691.019	709.59	727.036	745.143	748.589	751.721	706.033	642.884	696.732	713.93	695.505	681.072	642.479	595.275
2023-06-02	CDT	558.431	541.685	516.835	513.684	518.726	532.678	573.982	625.87	654.761	680.876	703.667	724.284	730.881	743.537	749.248	745.944	749.518	746.614	737.373	715.041	683.199	672.062	640.673	600.45
2023-06-03	CDT	562.199	536.594	504.565	496.89	495.552	492.18	509.453	549.675	593.614	637.842	661.959	682.35	687.388	696.673	704.608	709.594	710.379	716.895	719.122	698.405	686.454	660.198	639.348	591.019
2023-06-04	CDT	565.459	539.8	518.284	503.101	509.946	507.762	520.795	559.289	600.966	638.846	675.387	703.469	718.049	725.296	713.363	716.253	731.829	717.003	716.941	683.418	684.98	684.208	648.398	601.757
2023-06-05	CDT	564.948	544.103	533.187	528.55	532.275	548.692	590.373	633.829	654.778	675.74	699.565	716.927	737.924	747.361	743.349	727.655	697.636	684.985	673.402	665.922	657.188	656.647	627.438	575.038
2023-06-06	CDT	531.301	509.894	493.464	489.648	491.23	506.939	552.079	597.138	612.092	619.564	642.954	658.629	677.48	687.98	695.929	706.069	700.97	695.396	692.695	689.282	668.234	657.558	618.986	564.849
2023-06-07	CDT	530.557	507.571	491.658	481.629	479.995	492.584	533.711	573.262	584.479	604.865	628.862	642.931	651.388	680.196	699.427	674.423	623.58	608.509	660.923	646.95	631.005	635.016	599.354	539.465
2023-06-08	CDT	507.222	487.243	480.826	497.207	500.825	514.899	555.4	602.038	614.849	626.521	644.259	662.885	673.034	687.082	694.926	701.158	710.357	711.426	705.832	691.488	676.243	666.647	635.669	590.335
2023-06-09	CDT	559.337	532.856	519.656	513.938	513.662	529.888	559.343	587.474	612.682	638.243	659.285	677.868	691.296	707.461	708.245	678.924	630.987	622.827	667.605	656.018	642.187	624.264	603.818	566.644
2023-06-10	CDT	535.487	513.723	499.278	490.455	488.152	486.131	494.895	523.415	549.419	566.813	575.512	583.322	586.692	588.118	588.946	590.028	594.251	596.271	591.26	581.456	569.395	560.384	550.769	520.407
2023-06-11	CDT	496.99	480.782	470.567	466.871	464.928	463.019	474.345	492.067	516.865	542.593	560.05	572.547	579.652	583.898	587.695	592.822	608.273	630.433	642.255	635.88	616.834	598.305	575.225	536.648
2023-06-12	CDT	518.124	500.99	489.851	490.056	495.933	512.644	555.706	594.99	609.593	606.413	618.69	627.366	641.788	656.225	669.237	677.622	680.684	679.658	676.014	665.062	654.129	633.86	612.846	563.78
2023-06-13	CDT	529.349	510.036	500.304	493.726	494.691	510.778	554.616	596.32	614.749	630.781	646.446	664.629	680.365	695.826	703.112	708.936	682.659	693.482	707.711	712.628	681.532	667.195	636.752	586.953
2023-06-14	CDT	552.471	532.49	520.754	511.506	509.622	525.666	562.809	600.43	611.617	611.236	623.758	656.647	673.038	695.069	674.826	630.692	639.886	637.786	630.435	686.416	679.474	664.434	630.628	581.18
2023-06-15	CDT	542.998	521.474	508.556	498.64	499.435	518.199	557.017	596.394	612.329	612.193	627.637	641.373	648.717	657.627	668.598	674.253	682.778	680.624	674.296	664.185	645.896	631.702	604.518	564.088
2023-06-16	CDT	532.337	511.957	497.866	490.295	492.356	506.535	541.795	579.346	597.54	604.039	617.251	629.247	633.058	648.261	653.699	670.452	682.85	673.709	665.895	654.049	641.061	629.367	609.121	555.5
2023-06-17	CDT	526.243	508.353	495.292	486.561	489.029	492.109	503.607	529.312	557.985	581.755	595.666	607.022	610.408	611.985	614.154	610.544	609.465	607.308	603.048	598.644	590.983	585.13	575.442	536.056
2023-06-18	CDT	475.686	453.645	464.119	473.873	471.526	468.96	475.917	487.607	506.574	529.822	552.308	569.667	604.558	624.905	628.543	646.184	658.613	671.055	668.418	667.136	654.946	640	591.964	528.038
2023-06-19	CDT	505.235	503.743	502.449	495.988	499.399	510.137	548.326	600.418	632.425	658.493	687.12	714.339	728.168	744.81	751.562	759.096	735.442	688.996	742.034	747.647	726.174	725.638	698.547	641.806
2023-06-20	CDT	604.188	574.848	559.5	547.249	550.525	567.367	620.58	673.092	705.871	733.336	756.802	773.48	784.245	799.317	740.135	707.378	710.784	719.525	717.296	748.16	716.438	701.628	666.399	622.277
2023-06-21	CDT	576.362	562.92	556.139	542.12	537.86	540.888	580.211	623.627	648.399	679.921	703.2	716.392	730.388	756.502	763.512	746.802	703.21	700.415	749.98	729.627	705.243	695.109	661.24	607.708
2023-06-22	CDT	570.768	543.701	525.956	516.315	517.498	536.867	579.145	625.287	650.333	660.218	672.703	685.258	691.693	694.976	701.81	709.755	716.076	711.804	692.818	674.543	657.284	637.933	605.874	564.046
2023-06-23	CDT	529.602	508.298	497.146	488.695	486.603	494.997	530.331	573.889	593.489	602.112	612.909	619.699	615.543	616.733	616.763	609.52	604.418	596.286	588.887	575.692	561.654	543.336	527.583	497.826
2023-06-24	CDT	477.574	467.947	461.438	457.05	455.247	456.691	465.463	490.266	516.431	539.726	551.01	560.241	557.213	551.598	555.397	559.994	571.74	583.6	580.682	573.645	554.648	543.582	518.422	489.418
2023-06-25	CDT	477.786	466.89	458.477	452.483	450.158	453.096	458.431	481.347	511.745	533.303	545.389	557.845	566.11	568.667	569.399	576.107	592.							

2023-07-03	CDT	541.371	516.404	502.447	495.773	492.149	491.86	511.265	548.538	582.804	613.698	638.855	647.705	656.938	664.066	666.427	672.036	679.887	683.071	679.635	657.954	563.171	577.932	581.704	533.477
2023-07-04	CDT	472.694	450.266	441.289	430.198	429.66	430.823	426.838	454.613	477.835	505.348	523.919	538.797	546.119	553.471	559.726	569.094	578.244	589.921	585.965	573.98	549.222	529.644	504.841	483.693
2023-07-05	CDT	453.642	434.731	421.775	417.905	421.293	432.341	464.058	505.172	528.625	547.67	563.662	585.039	594.596	600.874	604.266	603.72	607.003	610.676	609.778	605.4	596.208	584.221	563.251	521.561
2023-07-06	CDT	494.174	478.23	467.016	460.331	463.083	463.719	520.043	560.591	577.752	593.419	606.081	614.453	615.439	623.2	631.031	642.272	652.872	645.209	645.208	643.585	635.255	619.949	579.625	514.381
2023-07-07	CDT	478.932	462.549	476.571	471.552	473.458	487.103	516.458	537.862	556.181	591.816	615.452	636.74	645.203	654.328	644.734	640.749	637.121	636.847	633.049	617.022	597.42	582.576	563.349	530.721
2023-07-08	CDT	503.827	482.899	470.569	462.671	460.096	457.94	469.857	494.721	521.988	545.702	562.212	571.492	575.058	577.985	582.788	592.932	587.593	584.053	587.967	577.692	560.89	561.224	557.888	513.094
2023-07-09	CDT	476.707	479.02	466.92	460.454	456.922	441.702	440.715	478.241	521.831	555.845	584.544	613.046	632.471	652.793	665.222	683.754	707.161	723.161	725.063	713.556	699.724	671.221	636.172	587.176
2023-07-10	CDT	551.577	526.724	507.085	497.232	474.892	493.593	540.473	584.038	603.133	620.538	640.523	652.8	658.423	662.333	666.549	672.556	679.476	681.83	674.25	657.023	633.591	615.86	588.5	543.624
2023-07-11	CDT	511.874	493.386	479.557	471.05	473.557	490.136	527.701	565.769	571.267	559.504	570.271	600.349	608.666	611.25	609.938	604.318	605.484	603.914	601.754	597.64	587.199	583.883	564.955	523.96
2023-07-12	CDT	498.006	482.48	476.236	471.335	474.087	492.603	526.189	563.709	555.202	546.391	558.644	567.831	574.563	581.801	585.501	591.756	623.006	631.073	609.614	569.405	562.467	587.089	592.004	552.801
2023-07-13	CDT	522.608	502.361	491.743	485.976	487.453	503.466	539.894	583.826	601.416	613.157	627.24	637.787	646.371	655.134	658.107	637.712	651.833	645.19	646.901	643.528	635.766	623.796	596.617	552.486
2023-07-14	CDT	517.339	496.969	485.002	477.884	477.507	492.669	524.39	564.014	583.236	588.142	606.287	629.856	641.14	650.811	652.684	665.737	670.774	668.426	656.872	633.396	611.182	600.52	578.169	543.953
2023-07-15	CDT	514.531	495.18	469.977	448.779	442.969	443.882	456.94	490.38	524.275	555.192	575.394	583.998	586.746	579.326	577.51	574.322	580.256	590.356	586.823	574.261	561.901	554.088	543.115	516.844
2023-07-16	CDT	491.411	476.389	468.871	463.319	462.406	457.616	450.619	478.993	510.304	531.623	544.399	557.139	566.107	566.533	567.319	574.214	557.262	563.138	564.09	567.82	574.242	565.525	542.768	504.947
2023-07-17	CDT	480.792	468.531	463.365	455.838	460.523	482.723	516.408	553.855	572.408	580.845	587.454	601.258	613.622	622.255	628.044	632.982	642.665	633.132	641.801	645.116	631.956	622.099	591.652	546.077
2023-07-18	CDT	514.699	495.971	483.976	477.075	480.731	499.812	504.167	528.488	536.097	549.679	564.478	583.986	594.21	601.078	602.372	617.568	636.422	639.105	627.149	628.776	633.545	626.881	597.576	556.03
2023-07-19	CDT	526.923	505.849	492.475	482.965	472.389	487.278	526.871	575.826	600.178	625.656	646.65	659.136	680.97	687.356	666.434	652.04	645.075	640.091	648.221	647.88	635.598	627.223	601.746	529.372
2023-07-20	CDT	498.893	496.763	495.714	489.532	489.85	483.574	510.964	548.33	575.539	590.468	605.386	620.462	635.082	659.412	672.528	691.904	711.414	715.48	712.733	698.347	678.601	661.391	628.11	575.84
2023-07-21	CDT	537.171	513.12	497.479	490.498	487.737	501.557	529.754	572.537	596.716	627.8	650.063	671.694	689.017	702.625	707.69	714.636	710.201	702.842	694.385	652.679	608.774	599.828	596.786	562.645
2023-07-22	CDT	529.5	512.776	499.438	488.289	487.257	491.247	499.949	524.723	558.099	591.76	619.997	644.878	658.428	652.24	662.843	674.118	681.061	684.213	631.706	608.945	589.43	579.228	556.729	509.991
2023-07-23	CDT	478.924	463.529	458.454	452.153	444.028	443.994	442.725	461.46	495.178	526.613	557.022	585.202	610.196	629.706	648.996	662.655	681.648	702.483	721.89	715.925	695.144	682.445	641.838	586.79
2023-07-24	CDT	545.594	521.594	512.374	503.617	502.064	518.381	555.351	595.862	623.911	655.551	689.853	721.674	749.418	769.151	784.465	797.806	809.453	814.154	806.307	788.267	764.353	745.509	705.617	643.666
2023-07-25	CDT	599.86	568.84	550.031	537.359	536.816	550.131	585.848	634.95	664.573	690.809	721.236	748.979	768.379	767.582	765.302	755.474	757.467	740.708	743.033	706.117	684.401	671.83	628.831	597
2023-07-26	CDT	568.385	546.439	536.388	529.299	529.57	548.937	584.634	631.046	659.717	662.232	672.329	703.019	740.508	750.067	746.786	756.914	730.117	675.927	724.387	736.87	789.385	761.33	710.637	652.925
2023-07-27	CDT	608.643	580.619	557.065	531.79	520.802	524.069	559.473	602.092	638.63	664.602	689.492	711.372	699.581	671.31	674.261	677.734	688.291	689.783	682.184	722.308	721.703	698.894	658.314	604.447
2023-07-28	CDT	563.328	536.529	515.984	493.004	493.176	517.944	547.82	589.204	616.563	631.112	632.376	636.459	633.669	638.808	615.422	578.861	587.772	597.268	657.115	646.465	626.581	610.866	587.158	546.242
2023-07-29	CDT	514.361	493.619	478.25	465.448	461.983	469.344	467.535	491.024	520.753	546.126	562.583	553.808	540.152	542.68	556.288	578.428	583.662	602.576	603.722	597.487	576.255	562.216	542.139	509.191
2023-07-30	CDT	484.567	467.307	458.522	454.095	450.661	453.583	454.796	478.457	506.173	532.17	550.409	576.561	596.046	610.469	623.526	640.714	660.974	679.552	683.455	673.661	647.873	627.129	590.443	539.666
2023-07-31	CDT	501.642	482.615	475.526	470.348	470.736	490.051	523.624	563.57	584.164	598.728	627.745	651.672	671.294	688.683	696.952	705.586	725.954	736.393	733.899	721.06	695.26	675.968	638.487	587.222
2023-08-01	CDT	549.133	521.501	509.331	501.342	506.302	527.145	561.369	605.564	626.851	652.245	686.329	712.093	739.753	766.185	778.272	791.155	792.299	797.585	782.073	746.278	721.787	703.262	655.138	602.954
2023-08-02	CDT	569.246	545.971	528.174	520.216	522.874	540.209	574.076	620.796	649.177	681.85	709.759	734.853	755.786	775.213	782.408	766.838	740.536	747.42	741.356	778.418	776.714	764.633	715.509	655.045
2023-08-03	CDT	612.98	586.303	566.291	552.042	542.89	557.768	595.425	640.666	676.39	706.457	734.526	755.515	778.201	790.588	768.782	726.6	730.642	730.821	783.721	769.026	736.11	717.274	672.424	615.444
2023-08-04	CDT	577.092	551.326	533.25	520.329	519.377	530.735	556.073	590.381	620.048	644.495	668.189	692.573	710.382	727.014	696.878	647.452	647.619	635.705	676.284	674.975	656.638	649.662	618.342	577.239
2023-08-05	CDT	548.719	526.232	512.572	504.917	500.28	500.122	504.774	528.119	559.705	593.111	616.232	637.784	654.884	661.247	668.779	672.371	678.456	671.121	654.643	633.704	622.399	613.808	589.412	560.56
2023-08-06	CDT	534.411	512.977	495.799	489.866	489.319	492.336	496.673	531.837	570.524	600.449	627.407	651.315	676.258	685.031	690.997	693.032	702.256	711.069	706.363	689.733	664.764	645.358	604.05	555.343
2023-08-07	CDT	524.444	509.183	496.428	490.298	491.347	508.698	543.6	586.868	611.482	634.166	660.461	681.363	690.205	714.128	727.018	738.293	739.61	746.17	724.89	702.042	682.125	663.122	616.252	573.073
2023-08-08	CDT	537.653	512.342	498.035	491.434	497.645	512.842	546.706	562.291	568.256	586.227	604.596	621.597	635.989	666.144	689.041	664.356	651.021	653.441	710.637	694.916	666.585	651.255	609.225	561.291
2023-08-09	CDT	529.149	507.528	484.692	477.154	480.083	508.171	539.47	574.666	596.299	617.441	640.591	656.922	668.482	680.875	648.242	668.673	613.01	602.376	587.808	648.419	639.424	629.747	594.388	556.679
2023-08-10	CDT	528.801	509.122	495.948	490.158	493.797	514.668	548.332	583.169	594.474	604.078	618.435	627.467	636.868	628.507	633.17	633.308	632.951	627.542	625.027	620.337	612.692	607.56	576.815	542.835
2023-08-11	CDT	517.974	501.385	486.717	470.941	472.464	494.831	526.334	562.668	585.183	600.386	610.028	618.507	625.433	633.448	631.989	640								

2023-08-19	CDT	567.082	554.656	543.101	532.611	531.104	530.82	538.823	567.627	607.947	650.855	685.004	713.485	732.608	750.566	758.469	765.936	761.358	729.939	712.659	672.752	636.455	613.948	582.172	551.927
2023-08-20	CDT	521.291	501.263	503.265	500.662	481.37	466.389	467.205	509.317	534.728	553.579	567.097	577.892	586.097	584.251	557.32	550.408	571.339	590.746	590.072	594.104	597.869	586.644	554.868	521.162
2023-08-21	CDT	499.774	486.912	478.52	474.054	480.547	505.735	551.338	582.595	598.009	616.106	624.86	631.159	632.087	635.657	633.189	603.272	565.784	568.85	570.132	648.049	657.151	643.965	609.731	573.85
2023-08-22	CDT	548.243	533.416	523.041	518.332	519.235	519.351	529.959	575.325	610.039	631.924	647.057	655.057	635.37	599.814	611.924	617.007	627.206	626.633	617.462	615.494	607.894	659.68	620.398	582.292
2023-08-23	CDT	560.986	539.889	525.906	521.001	521.664	542.823	566.71	594.494	601.706	620.544	643.372	659.948	626.218	595.229	603.035	605.288	617.069	624.073	625.41	632.053	644.372	691.137	649.182	604.109
2023-08-24	CDT	575.933	557.198	548.178	540.638	540.612	559.329	604.859	642.063	652.704	668.646	679.226	633.678	616.414	631.056	647.637	666.301	687.284	692.148	685.753	661.454	627.727	631.447	623.088	579.815
2023-08-25	CDT	552.217	535.947	523.636	511.597	508.545	522.595	559.836	595.463	611.272	632.775	646.955	663.278	672.456	677.176	675.321	679.803	675.756	669.377	650.919	620.15	594.956	581.361	551.243	515.382
2023-08-26	CDT	489.893	483.131	477.371	470.406	468.923	474.945	483.041	445.078	457.2	480.183	490.969	486.121	493.362	496.802	505.953	516.103	530.963	540.261	535.19	518.139	505.51	494.721	462.009	431.195
2023-08-27	CDT	407.923	391.888	376.268	368.65	368.883	370.977	380.106	406.766	458.882	494.139	537.602	604.243	614.308	626.754	644.515	653.504	667.143	698.387	695.399	686.884	673.292	646.412	600.85	557.762
2023-08-28	CDT	529.698	511.017	501.427	498.788	501.902	525.163	571.8	606.692	606.045	634.37	662.653	682.384	698.035	720.034	735.934	750.81	763.086	770.96	763.312	742.11	724.182	693.457	641.051	589.737
2023-08-29	CDT	554.585	534.704	526.236	520.313	522.084	540.442	586.348	616.594	626.348	641.906	661.538	677.626	693.843	708.589	718.467	728.921	738.04	742.254	735.682	718.463	698.32	673.336	623.344	577.44
2023-08-30	CDT	549.824	533.114	520.626	514.395	516.083	538.091	585.362	622.144	629.368	643.985	663.923	680.102	695.85	712.669	729.619	748.139	759.894	766.263	759.958	745.775	727.788	695.036	645.438	598.482
2023-08-31	CDT	571.022	553.333	540.891	534.185	530.378	554.255	603.516	636.411	638.66	646.613	662.426	681.58	689.934	707.705	724.484	728.166	751.418	754.495	746.871	728.023	716.614	693.208	655.798	606.553
2023-09-01	CDT	545.32	536.136	524.723	512.482	510.779	527.811	567.756	607.261	628.48	670.744	706.104	733.482	752.018	774.529	789.029	771.143	732.171	725.034	702.777	726.293	714.681	697.628	662.361	616.125
2023-09-02	CDT	580.024	556.629	539.652	531.607	526.851	527.338	533.101	552.491	596.103	641.326	679.471	707.15	717.09	694.897	708.804	698.171	679.618	697.609	685.239	705.142	691.722	660.257	633.269	596.817
2023-09-03	CDT	563.704	538.573	521.662	509.664	500.391	501.711	523.481	546.298	586.746	635.016	673.245	706.715	730.392	750.488	731.84	704.917	713.542	711.871	698.194	672.047	711.166	687.827	649.351	611.512
2023-09-04	CDT	584.229	565.743	551.508	542.981	538.802	542.085	549.359	565.765	601.328	633.935	659.458	685.833	716.855	738.344	750.614	768.933	758.845	742.47	743.834	796.533	793.236	756.262	692.143	637.789
2023-09-05	CDT	586.712	558.094	541.664	528.22	526.052	542.036	577.569	616.989	640.098	648.867	656.17	652.056	637.183	625.516	614.805	610.268	611.826	613.123	617.185	615.19	613.242	589.23	559.462	522.089
2023-09-06	CDT	500.409	488.08	487.866	487.8	489.634	513.441	565.947	586.349	579.261	590.885	600.422	603.982	606.625	612.624	618.605	624.768	640.714	652.915	660.865	648.842	644.81	618.261	581.502	542.731
2023-09-07	CDT	514.345	498.148	480.973	474.08	483.722	507.887	562.017	595.149	588.242	590.626	594.499	601.676	601.986	606.107	611.624	616.796	624.473	627.686	628.65	621.958	623.42	602.819	565.648	526.745
2023-09-08	CDT	503.371	491.65	479.871	475.359	476.166	497.808	550.096	577.028	579.549	587.71	600.513	608.791	614.624	626.897	637.945	645.928	657.025	655.487	646.424	626.1	619.569	600.398	572.4	538.864
2023-09-09	CDT	510.21	492.265	481.385	472.742	472.403	476.573	490.883	512.35	536.673	544.477	554.979	560.404	569.72	573.52	585.932	594.285	603.03	600.921	592.004	581.037	575.867	556.906	530.948	505.854
2023-09-10	CDT	481.799	467.569	461.286	458.14	453.013	461.146	475.076	494.058	524.368	546.324	560.228	573.807	566.539	591.696	599.962	610.665	621.848	637.561	633.585	624.741	626.946	592.396	551.128	513.666
2023-09-11	CDT	486.896	480.842	477.179	473.659	472.846	492.601	548.523	578.691	581.42	592.749	593.772	601.236	597.696	594.506	593.754	593.778	600.487	606.449	604.448	605.012	606.787	584.351	554.803	530.038
2023-09-12	CDT	521.744	507.855	496.322	496.619	504.477	523.698	578.344	583.716	566.748	557.904	551.03	555.9	551.68	559.431	548.96	543.7	551.144	555.594	556.005	557.317	563.625	535.714	492.935	461.399
2023-09-13	CDT	443.024	434.929	428.667	426.352	431.18	456.421	512.11	540.323	531.106	529.635	528.017	535.328	535.371	539.139	537.398	537.634	556.341	569.314	573.611	573.657	582.92	555.352	518.5	487.22
2023-09-14	CDT	466.249	456.018	448.464	447.501	451.424	475.16	528.119	553.719	554.129	554.9	558.378	564.496	564.225	569.879	574.666	588.649	592.611	592.721	591.423	594.067	594.196	569.519	536.437	501.267
2023-09-15	CDT	477.314	461.289	452.862	448.37	452.599	466.487	512.458	544.414	544.067	547.06	552.108	559.418	560.016	567.72	575.703	587.671	605.108	603.161	585.959	573.232	570.082	548.506	525.826	497.735
2023-09-16	CDT	472.954	463.248	455.643	450.066	451.706	463.645	483.603	502.852	530.678	550.059	551.466	553.607	548.552	542.036	540.88	538.924	541.388	544.322	547.398	551.226	559.618	544.889	518.99	494.868
2023-09-17	CDT	476.081	466.497	461.724	459.483	459.004	464.278	481.503	501.39	526.798	542.808	550.294	555.975	561.892	563.483	566.642	575.572	591.267	605.187	608.548	607.768	608.152	575.008	537.211	501.242
2023-09-18	CDT	479.89	468.955	466.675	466.148	473.193	500.91	557.421	589.55	591.803	596.109	604.526	614.948	620.283	626.689	631.29	640.439	649.542	657.278	652.964	650.072	648.043	616.047	573.536	537.312
2023-09-19	CDT	513.383	499.067	491.35	484.904	485.246	507.352	561.963	596.813	595.494	600.685	612.104	623.698	629.808	632.036	636.206	666.936	686.36	686.65	687.576	680.195	669.972	634.11	587.892	544.148
2023-09-20	CDT	520.19	501.881	488.66	471.44	465.802	493.714	559.279	591.587	571.73	566.161	579.119	585.028	598.995	624.278	641.345	646.596	671.016	678.733	672.945	663.271	653.817	613.115	567.968	525.868
2023-09-21	CDT	502.612	487.97	478.59	473.607	476.156	497.56	549.113	586.662	577.975	584.542	591.706	608.813	621.483	615.929	614.407	624.875	627.514	628.1	619.046	620.16	615.522	588.211	554.362	521.839
2023-09-22	CDT	497.243	484.923	476.113	471.632	473.156	493.967	544.96	579.118	580.294	585.997	593.34	599.1	597.146	601.254	608.014	608.635	608.996	605.733	597.354	595.979	591.208	573.263	546.975	513.887
2023-09-23	CDT	493.325	484.161	474.019	470.714	469.589	473.027	485.389	510.282	535.516	558.248	570.81	572.267	570.678	568.518	564.303	564.398	565.141	566.195	567.017	566.826	558.699	541.778	523.257	498.003
2023-09-24	CDT	481.149	471.303	464.982	458.101	455.039	460.806	471.158	490.702	520.354	540.606	555.022	565.448	568.866	566.442	563.815	558.736	553.463	566.675	568.976	578.397	570.291	542.224	505.312	459.235
2023-09-25	CDT	430.06	421.69	417.89	416.098	420.984	445.852	497.301	533.757	532.504	541.483	550.302	554.822	556.634	558.884	555.813	556.098	557.525	557.439	559.985	572.599	569.622	542.102	504.307	472.61
2023-09-26	CDT	452.399	441.038	433.163	431.332	434.196	456.921	511.875	545.823	537.733	542.001	546.674	553.035	559.844	570.465	572.755	579.137	583.691	588.77	592.273	609.735	605.134	575.01	541.825	510.442
2023-09-27	CDT	490.078	487.216	482.192	478.407	480.016	501.01	556.237	591.887	578.958	582.15	585.768	597.352	603.456	605.946	602.249	593.773								

2023-10-05	CDT	498.793	488.129	482.837	477.976	483.288	508.78	564.512	594.25	584.686	586.758	591.426	592.197	588.878	565.664	569.93	583.27	604.728	612.46	620.555	631.542	621.633	597.973	569.258	541.559
2023-10-06	CDT	525.983	512.021	506.063	504.477	509.811	529.722	570.048	610.372	616.257	624.497	626.113	627.213	619.836	610.378	602.772	607.195	613.756	618.312	622.012	631.836	619.223	613.831	592.091	567.819
2023-10-07	CDT	550.4	540.415	536.109	540.731	545.262	557.467	573.641	601.665	626.763	628.094	625.497	621.328	615.368	604.315	588.584	583.178	586.91	594.56	600.139	612.3	603.701	584.18	562.613	548.098
2023-10-08	CDT	529.988	522.206	513.513	513.756	518.901	527.845	546.318	573.162	595.093	596.611	595.032	594.237	592.606	583.734	577.71	576.792	583.519	596.037	607.44	632.062	616.806	590.491	561.834	533.839
2023-10-09	CDT	519.713	514.784	512.866	517.55	530.799	559.395	614.867	656.599	650.254	640.875	642.928	634.899	628.233	627.54	618.05	618.926	622.108	617.522	608.816	634.718	647.255	633.26	608.575	583.251
2023-10-10	CDT	571.761	553.782	526.978	536.066	556.953	599.767	663.645	708.056	692.883	677.964	632.332	618.228	620.066	630.388	629.107	626.504	628.615	627.11	606.03	622.697	628.333	619.249	591.857	571.011
2023-10-11	CDT	557.735	552.069	545.701	548.884	555.673	584.198	643.742	680.998	669.771	661.016	654.564	648.652	642.85	647.214	642.104	639.495	646.275	649.99	646.1	663.217	650.915	623.093	573.858	545.329
2023-10-12	CDT	529.34	522.473	518.75	520.423	528.415	552.914	606.689	641.149	631.134	625.471	616.072	604.909	597.691	596.437	590.517	589.777	596.621	600.122	608.572	628.434	617.84	597.155	574.175	544.529
2023-10-13	CDT	526.585	517.809	510.582	526.548	547.941	577.843	636.53	683.342	680.799	677.933	644.536	663.892	668.174	658.548	650.64	648.153	647.506	646.436	649.164	657.728	642.972	632.284	613.037	591.43
2023-10-14	CDT	570.979	557.288	549.635	548.738	552.019	562.275	581.541	610.182	633.216	649.12	652.548	655.004	647.287	633.813	611.02	612.849	614.43	623.849	630.01	635.411	621.933	607.23	587.386	568.396
2023-10-15	CDT	557.968	550.372	547.651	551.986	554.153	564.804	581.898	608.453	627.671	632.502	626.828	619.058	613.415	603.566	591.616	587.587	587.69	601.628	619.896	650.7	636.916	613.797	582.555	532.84
2023-10-16	CDT	522.004	533.835	540.794	545.815	559.027	566.717	601.028	645.338	637.02	635.114	628.368	615.424	598.914	595.603	586.605	584.207	589.868	595.71	609.594	635.553	623.145	600.235	573.189	550.193
2023-10-17	CDT	537.463	530.375	527.057	527.231	536.073	566.524	620.725	658.015	647.506	637.789	627.403	612.65	619.183	625.792	615.22	617.783	623.75	631.025	644.63	653.776	637.468	613.06	581.835	553.897
2023-10-18	CDT	543.234	532.683	529.309	518.576	512.418	541.742	609.878	649.617	642.486	643.507	647.483	650.251	639.549	630.237	628.18	623.355	593.203	545.216	552.082	565.196	627.733	608.62	582.901	560.008
2023-10-19	CDT	547.194	543.893	538.814	538.421	547.958	574.005	616.121	653.159	659.822	661.913	659.973	644.866	641.944	638.034	633.116	630.314	600.4	563.982	566.315	581.961	644.299	639.712	614.199	584.763
2023-10-20	CDT	567.7	560.427	555.715	555.833	534.107	525.132	567.276	608.01	617.979	680.215	681.681	664.239	651.119	639.736	635.487	633.084	630.896	623.683	627.788	642.442	637.606	630.038	609.918	588.808
2023-10-21	CDT	576.851	569.84	562.473	556.494	557.862	562.502	570.537	608.921	647.762	661.684	665.118	657.659	644.833	631.599	626.171	622.375	626.408	631.345	645.519	638.269	628.511	618.646	599.376	579.642
2023-10-22	CDT	566.102	544.483	541.475	538.572	541.863	553.759	573.175	601.791	624.821	636.038	640.401	634.391	628.187	624.895	621.266	621.729	626.905	642.139	665.144	673.096	651.386	621.498	589.738	563.6
2023-10-23	CDT	546.336	539.525	539.424	539.812	551.064	551.546	569.345	613.674	607.583	593.907	587.737	659.476	660.87	666.812	662.028	659.978	668.649	677.345	694.542	693.566	675.437	650.597	620.552	591.255
2023-10-24	CDT	573.848	532.022	526.255	527.473	535.399	583.87	661.202	684.6	652.434	658.087	703.211	707.406	697.366	689.88	596.422	573.129	580.121	595.124	613.876	669.846	717.035	698.701	663.696	631.772
2023-10-25	CDT	611.283	601.694	594.956	590.887	594.841	620.816	646.657	638.236	631.286	622.7	626.401	702.722	709.089	707.284	706.699	710.946	720.722	742.316	755.443	750.525	731.595	705.638	669.604	636.553
2023-10-26	CDT	603.391	593.631	586.518	586.188	590.941	616.398	669.299	708.346	697.958	689.313	691.088	698.804	692.226	688.981	680.359	684.701	695.794	703.133	716.406	698.685	679.364	676.08	642.96	615.804
2023-10-27	CDT	600.291	585.103	584.004	588.105	602.185	629.534	679.928	717.767	714.285	717.913	721.786	723.143	715.299	710.932	708.549	707.946	714.506	723.296	736.36	742.903	732.741	715.924	694.937	674.515
2023-10-28	CDT	662.225	654.014	647.581	649.324	653.824	665.4	686.723	715.5	733.989	735.913	733.766	723.857	708.147	693.785	681.398	674.305	673.069	688.899	717.997	726.43	719.091	704.735	684.338	666.648
2023-10-29	CDT	653.501	651.077	650.393	648.918	649.258	651.195	667.59	692.171	714.294	722.379	711.404	700.694	693.493	684.001	675.093	673.184	687.845	710.728	741.903	755.194	744.543	725.815	699.814	680.683
2023-10-30	CDT	668.679	664.318	664.525	664.275	671.954	700.964	758.236	797.996	762.609	755.063	797.154	783.554	770.089	763.714	750.57	754.452	758.423	761.638	779.447	783.277	760.172	740.947	708.549	687.428
2023-10-31	CDT	666.923	663.928	658.818	659.812	668.995	701.596	720.032	708.563	702.027	676.474	613.103	618.974	731.449	732.15	730.883	720.934	702.419	701.989	717.818	721.547	760.597	762.172	741.935	712.118
2023-11-01	CDT	699.163	693.278	682.699	676.064	648.013	625.808	664.696	698.262	769.504	769.49	765.496	749.019	730.094	715.94	709.888	707.87	684.162	644.195	627.278	639.961	677.663	655.452	624.698	595.226
2023-11-02	CST	652.644	652.955	649.821	653.119	627.843	602.297	598.463	621.341	658.245	744.679	769.972	772.396	756.546	747.758	742.605	740.471	737.483	750.697	774.893	774.935	762.327	734.638	703.63	677.086
2023-11-03	CST	661.454	651.079	645.785	646.518	654.106	681.284	735.266	777.028	778.382	770.511	758.274	742.24	723.685	713.087	702.584	694.853	702.262	728.608	753.566	756.153	752.091	744.743	723.753	702.336
2023-11-04	CST	687.828	680.137	679.393	675.389	675.316	683.842	695.835	709.404	732.466	748.634	756.224	750.866	739.138	728.925	711.439	708.31	673.332	634.106	644.924	719.308	711.723	693.925	672.935	650.637
2023-11-05	CST	636.937	630.379	627.718	628.743	631.005	639.221	654.838	669.43	694.748	717.628	729.028	724.996	724.169	719.41	710.508	700.033	703.952	713.414	735.113	725.546	716.703	696.176	664.437	629.772
2023-11-06	CST	604.824	593.358	582.689	583.718	591.312	604.223	640.574	699.611	721.382	728.109	739.785	741.948	743.578	757.055	736.261	731.667	695.237	664.372	687.391	670.218	735.586	724.097	693.673	654.268
2023-11-07	CST	664.725	645.696	632.421	624.491	626.612	636.927	671.043	723.335	711.211	702.166	704.007	705.595	714.802	752.035	738.368	728.68	727.346	733.26	733.978	727.964	719.326	719.473	701.612	668.58
2023-11-08	CST	675.771	652.968	642.632	631.771	616.655	643.261	645.634	701.251	730.365	726.701	726.516	719.511	721.759	753.375	736.285	718.763	740.905	766.446	775.03	773.499	762.418	744.852	686.523	645.716
2023-11-09	CST	683.031	681.842	672.497	665.419	647.733	667.607	698.297	716.676	727.293	736.875	744.844	755.342	756.116	788.205	779.925	771.425	768.781	777.431	771.212	766.906	754.441	736.676	714.794	685.706
2023-11-10	CST	707.028	680.972	665.306	655.094	650.25	655.587	643.964	630.889	596.766	609.396	617.658	686.826	698.708	736.976	787.352	728.116	669.187	671.006	649.322	717.792	709.459	693.725	678.204	659.569
2023-11-11	CST	692.553	667.854	655.296	645.712	641.898	645.936	659.085	679.547	681.524	701.42	712.871	718.507	718.217	745.194	727.753	714.978	707.805	716.8	722.914	728.12	714.399	702.664	686.469	663.923
2023-11-12	CST	690.89	670.766	661.437	655.825	650.596	650.036	658.721	672.406	669.831	690.448	695.07	692.661	679.099	693.54	661.682	611.836	612.31	653.062	696.553	717.108	700.953	679.808	640.284	614.453
2023-11-13	CST	636.002	624.405	613.005	613.734	621.327	638.26	671.275	739.877	774.784	761.779	741.796	733.651	72											

2023-11-21	CST	626.076	627.816	627.823	629.738	637.064	645.4	680.169	739.359	780.384	765.007	730.57	734.217	727.096	716.566	712.527	706.961	711.006	743.689	776.341	778.188	778.651	769.317	750.4	721.121
2023-11-22	CST	695.449	681.824	667.952	667.505	672.176	683.758	713.598	760.363	786.938	776.717	767.575	767.674	761.167	748.931	747.373	748.002	755.584	776.054	777.474	764.154	763.133	765.025	752.44	734.016
2023-11-23	CST	717.407	706.303	705.257	703.46	706.405	715.604	729.869	747.466	770.367	790.664	794.858	795.897	778.338	746.075	716.286	696.515	698.974	724.69	757.522	761.628	767.06	771.156	762.197	756.942
2023-11-24	CST	744.738	733.519	731.062	731.786	735.591	741.899	760.349	780.466	801.002	805.588	784.983	727.127	710.945	689.349	674.878	662.052	664.8	687.855	713.422	712.445	718.227	752.705	752.866	739.023
2023-11-25	CST	721.534	712.964	708.706	707.455	706.964	658.027	666.732	693.813	738.465	778.469	790.882	784.701	768.262	751.123	735.844	722.424	722.529	740.168	767.485	767.924	762.584	757.076	744.59	722.554
2023-11-26	CST	701.021	684.388	673.601	665.367	660.686	663.108	670.037	688.64	713.767	738.69	754.065	760.226	764.234	765.615	761.117	765.633	776.283	808.125	844.807	847.922	845.05	831.771	810.426	778.243
2023-11-27	CST	757.109	746.847	742.975	742.735	743.807	753.284	782.412	825.777	856.537	857.513	832.533	827.005	819.367	806.173	799.064	794.496	795.346	808.612	806.282	809.544	803.323	800.555	800.431	777.844
2023-11-28	CST	828.359	805.721	771.882	745.51	741.547	754.881	779.027	821.73	817.73	802.774	794.726	771.102	774.116	798.784	773.804	748.126	726.92	733.538	744.114	740.338	731.962	710.806	690.495	659.321
2023-11-29	CST	671.882	648.156	640.11	635.258	635.145	644.117	675.347	733.78	741.06	724.828	702.915	686.948	676.174	706.058	684.325	667.814	664.859	691.253	708.587	706.93	700.43	692.203	672.029	641.771
2023-11-30	CST	659.271	637.093	626.213	620.915	623.986	634.546	669.755	725.183	734.449	720.216	705.439	700.992	696.957	727.578	710.797	697.163	701.46	715.676	722.762	720.219	705.334	699.414	684.593	663.739
2023-12-01	CST	702.944	670.633	656.149	648.242	662.868	673.208	705.764	768.237	781.463	759.563	745.8	728.939	711.455	737.661	718.831	712.191	713.618	729.102	733.58	728.15	728.045	725.279	701.06	675.626
2023-12-02	CST	706.89	683.643	663.233	653.749	648.431	654.784	668.922	692.89	692.12	680.548	696.679	707.996	698.284	722.901	702.015	684.887	688.03	703.214	707.432	703.934	692.166	685.318	679.437	660.739
2023-12-03	CST	692.103	671.85	663.767	659.585	653.642	658.187	669.488	686.776	689.663	705.077	710.311	714.14	715.099	753.463	731.674	722.411	725.972	741.117	743.712	736.545	729.689	679.609	653.985	627.234
2023-12-04	CST	660.379	679.136	676.396	672.344	674.392	677.655	685.03	744	728.818	757.997	772.387	764.924	751.795	780.342	749.014	733.119	729.485	751.71	765.803	764.42	758.749	745.35	721.631	690.249
2023-12-05	CST	715.177	692.592	680.081	672.777	641.535	644.395	668.82	708.18	720.125	726.43	720.485	713.931	706.132	744.244	723.91	709.924	694.824	726.484	749.951	751.444	748.856	736.144	712.788	679.086
2023-12-06	CST	709.054	680.135	663.568	651.554	645.534	647.895	674.18	720.829	735.167	718.979	708.89	700.822	683.451	693.072	672.624	654.852	655.039	679.497	696.544	696.09	696.036	686.241	669.978	636.217
2023-12-07	CST	651.506	628.108	616.419	611.577	614.628	624.523	656.33	710.662	725.997	713.66	683.795	669.361	650.953	665.79	642.818	626.902	630.875	677.225	701.007	701.109	700.82	691.713	671.082	639.363
2023-12-08	CST	643.182	623.722	613.337	603.781	607.44	620.908	649.001	698.858	722.838	716.278	716.235	715.688	712.947	744.866	734.18	733.626	730.848	737.389	727.432	718.987	704.737	683.898	667.987	648.444
2023-12-09	CST	674.644	663.498	638.712	649.339	648.378	650.431	665.987	699.531	700.03	715.578	728.227	739.746	743.841	791.915	772.713	769.538	771.732	785.34	773.962	761.116	750.501	735.213	697.371	673.825
2023-12-10	CST	714.599	693.334	679.765	670.981	665.886	667.56	676.454	694.475	691.745	709.802	719.08	723.894	727.815	775.806	753.433	751.829	754.562	773.897	775.817	774.137	774.417	755.356	737.711	708.68
2023-12-11	CST	743.928	718.972	705.409	707.232	716.054	725.925	753.553	805.671	809.25	794.859	790.135	777.958	768.804	807.248	794.766	786.201	781.994	803.088	811.233	809.216	801.845	789.708	765.536	732.18
2023-12-12	CST	767.643	747.359	730.721	725.047	730.721	741.939	775.854	748.244	659.458	660.178	718.959	827.796	786.573	815.955	797.649	790.272	799.144	829.12	826.8	823.077	815.22	799.286	774.979	743.801
2023-12-13	CST	775.308	747.573	733.514	727.395	724.905	729.869	765.38	826.448	833.876	834.988	815.106	775.777	749.15	772.879	749.319	736.915	739.298	765.833	772.706	767.441	766.093	755.779	733.09	699.962
2023-12-14	CST	716.078	692.237	679.821	672.851	671.705	677.528	704.706	760.684	779.226	751.119	699.795	703.392	705.522	722.378	695.116	683.192	684.348	708.099	718.862	717.816	716.55	701.536	680.023	652.351
2023-12-15	CST	660.407	633.443	623.034	615.967	613.973	619.988	648.613	697.119	720.331	720.357	718.609	715.914	711.137	740.39	727.085	712.39	696.69	690.668	692.432	708.705	701.391	695.156	683.33	660.987
2023-12-16	CST	685.751	663.193	641.917	629.799	628.368	632.942	645.614	667.855	673.811	695.622	705.53	703.311	701.865	732.368	711.161	698.708	704.128	720.685	719.707	712.716	708.687	699	683.054	662.816
2023-12-17	CST	691.953	664.997	648.371	638.93	635.901	639.328	648.443	667.169	670.187	687.981	693.752	697.287	698.622	743.904	731.74	720.514	722.805	747.954	763.139	759.535	756.375	746.302	730.25	703.841
2023-12-18	CST	746.599	734.55	726.71	725.897	727.441	739.024	774.441	832.314	840.06	831.338	813.821	793.248	761.306	801.502	768.914	754.845	766.65	802.932	803.071	800.976	800.655	797.6	778.192	746.086
2023-12-19	CST	777.916	747.614	728.738	708.555	697.807	695.768	724.751	775.417	781.294	765.635	751.015	735.971	724.574	758.39	745.693	731.177	735.324	757.554	756.55	753.601	757.212	743.998	725.756	697.099
2023-12-20	CST	718.491	695.332	683.875	675.218	673.611	680.528	710.819	763.57	780.122	770.147	762.141	754.884	739.362	771.557	755.221	742.4	738.237	762.689	764.963	762.428	755.169	744.618	729.591	698.368
2023-12-21	CST	721.277	699.959	681.881	669.839	664.397	671.839	698.986	751.698	768.652	760.775	752.416	746.298	736.75	762.79	745.799	734.803	732.305	749.43	747.485	740.914	735.053	724.162	706.502	676.468
2023-12-22	CST	695.114	670.079	654.712	643.322	639.317	643.442	667.814	707.086	719.553	722.918	728.321	726.27	720.51	741.823	713.281	713.277	709.616	722.311	723.165	712.016	702.741	691.301	678.076	655.517
2023-12-23	CST	679.743	653.175	638.816	628.117	624.672	628.186	637.31	654.263	657.849	678.463	692.542	697.874	691.468	711.887	687.227	670.166	664.9	683.362	683.985	679.978	670.734	662.824	648.167	624.972
2023-12-24	CST	627.561	596.402	576.062	570.69	566.916	567.44	576.13	586.785	611.894	643.666	662.716	671.169	678.704	676.495	675.819	674.097	674.25	679.324	692.877	687.171	682.317	678.05	672.468	663.917
2023-12-25	CST	649.283	634.706	626.084	622.785	622.282	630.513	645.406	664.195	687.822	706.954	721.535	729.877	735.897	725.834	715.374	706.286	705.274	716.826	730.12	723.066	712.632	698.653	680.204	657.336
2023-12-26	CST	639.129	621.602	607.618	604.015	602.868	598.917	577.694	603.917	605.652	618.146	632.886	647.244	665.528	706.551	691.163	683.466	681.388	692.866	690.086	679.484	667.858	655.726	635.277	607.653
2023-12-27	CST	627.033	597.506	577.206	567.519	569.719	578.647	599.494	632.825	645.662	659.558	670.092	674.022	675.635	706.793	689.818	680.816	681.661	703.032	712.436	706.983	702.671	694.38	672.404	644.553
2023-12-28	CST	660.083	634.664	620.049	616.196	612.823	617.327	640.331	678.544	690.621	697.52	702.255	689.853	650.009	682.024	665.603	659.573	674.518	700.182	720.064	722.989	717.825	708.537	693.284	669.321
2023-12-29	CST	700.381	645.883	624.845	621.773	619.234	640.766	675.223	708.162	703.048	708.641	706.236	691.901	681.952	704.274	686.213	669.03	665.817	685.798	695.269	688.766	682.656	677.648	669.103	655.784
2023-12-30	CST	686.16	668.097	657.469	650.238	648.588	659.107	679.707	698.852	697.964	721.281	734.305	748.708	750.178	799.812	781.323	758.057								

**Annual Electric Balancing Authority Area and Planning  
 Area Report**

For the Year Ending December 31, 2023

**Part III - Schedule 2. Forecast Summer and Winter Peak Demand and Annual Net Energy for Load**

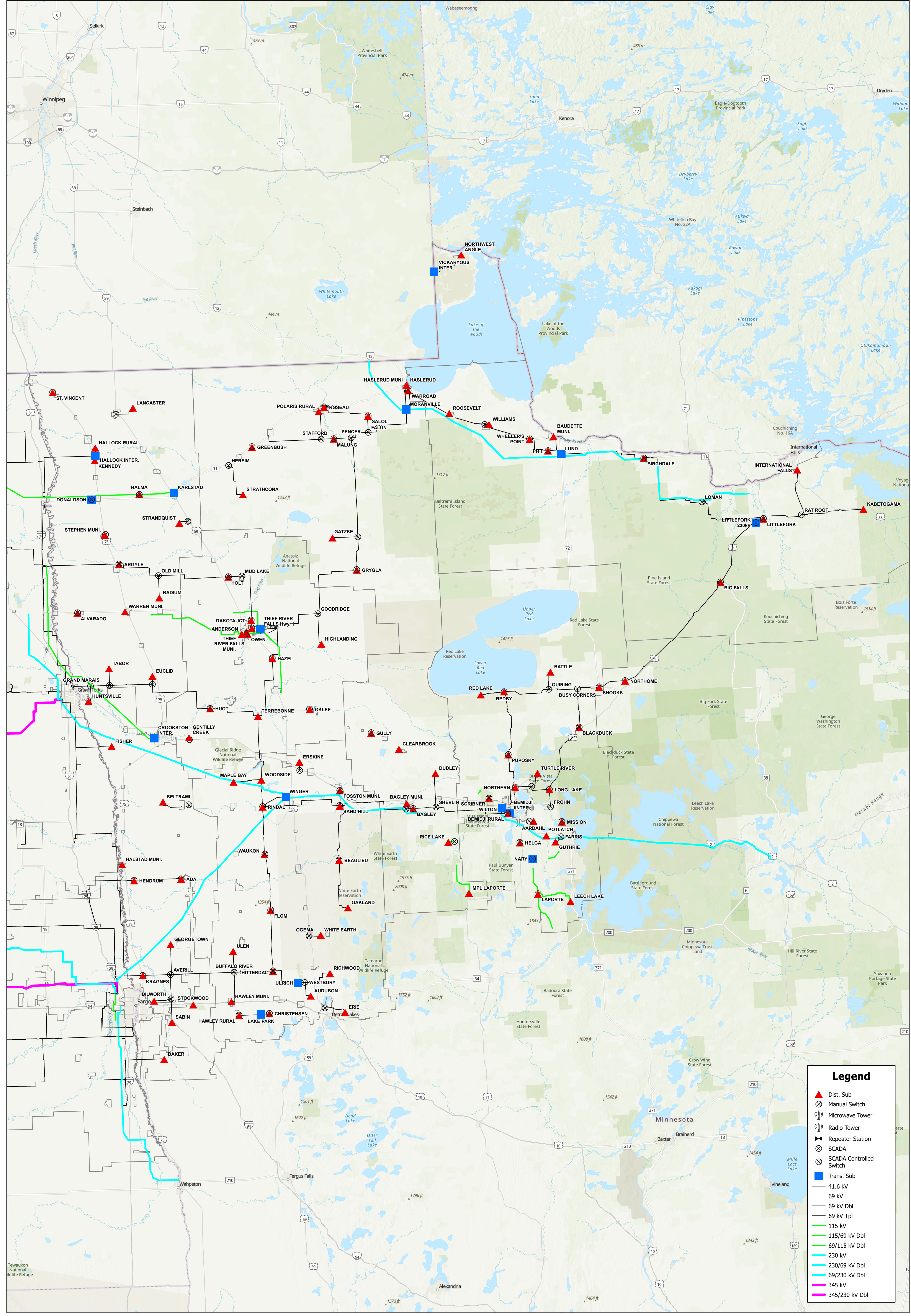
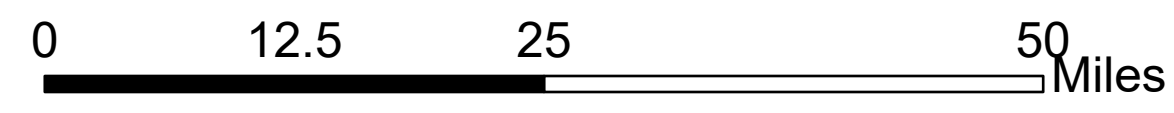
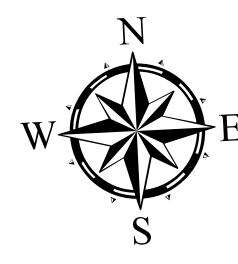
Provide the planning area's forecast summer and winter peak demand, in megawatts, and annual net energy for load, in megawatthours, for the next ten years.

Line No. (a)	Year (b)	Summer Forecast (MW) (c)	Winter Forecast (MW) (d)	Forecast of Annual Net Energy for Load (MWh) (e)
1	2024	768	922	4,676,930
2	2033	840	1,008	4,990,502
3	2025	776	931	4,710,388
4	2026	783	941	4,744,493
5	2027	791	950	4,778,779
6	2028	799	959	4,813,325
7	2029	807	969	4,848,267
8	2030	815	979	4,883,392
9	2031	823	989	4,918,765
10	2032	832	998	4,954,462

**EXHIBIT III**

Minnkota Power Cooperative Electric System Maps

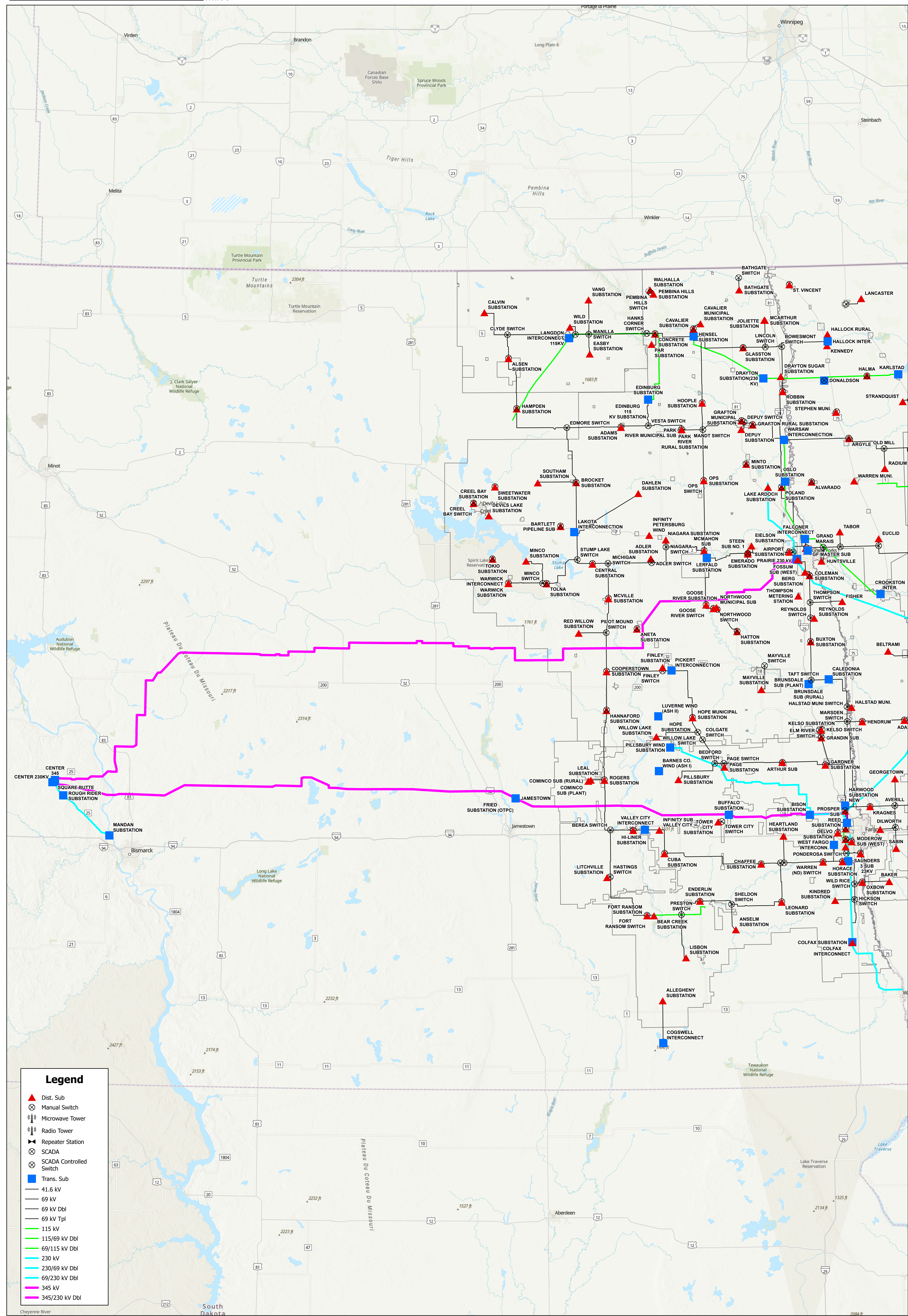
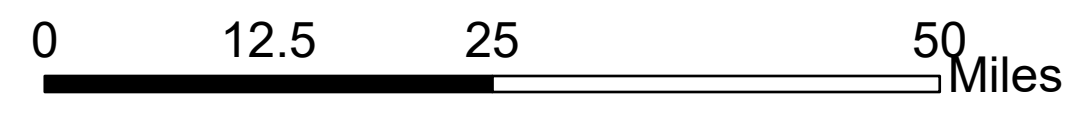
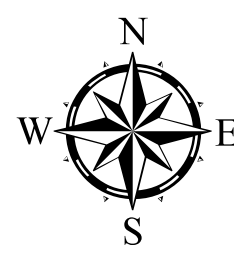
# MPC GEOGRAPHICAL SYSTEM MAP MINNESOTA



**Legend**

- ▲ Dist. Sub
- ⊗ Manual Switch
- ⊗ Microwave Tower
- ⊗ Radio Tower
- ⊗ Repeater Station
- ⊗ SCADA
- ⊗ SCADA Controlled Switch
- Trans. Sub
- 41.6 kV
- 69 kV
- 69 kV Dbl
- 69 kV Tpl
- 115 kV
- 115/69 kV Dbl
- 69/115 kV Dbl
- 230 kV
- 230/69 kV Dbl
- 69/230 kV Dbl
- 345 kV
- 345/230 kV Dbl

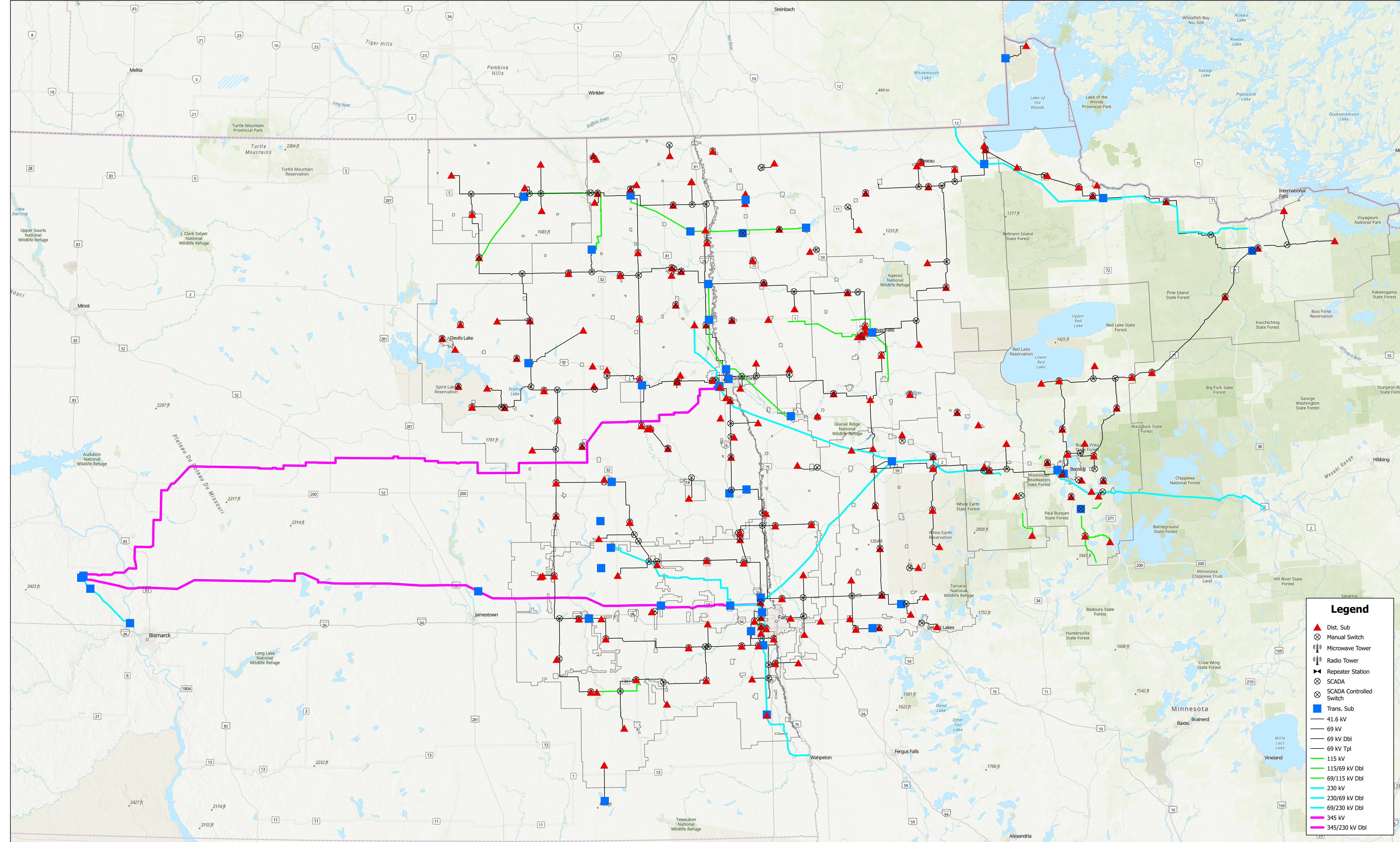
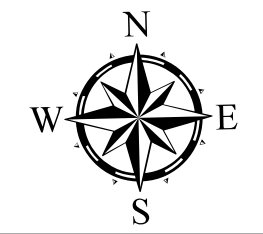
# MPC GEOGRAPHICAL SYSTEM MAP NORTH DAKOTA



**Legend**

- ▲ Dist. Sub
- ⊗ Manual Switch
- ⊗ Microwave Tower
- ⊗ Radio Tower
- ⊗ Repeater Station
- ⊗ SCADA
- ⊗ SCADA Controlled Switch
- Trans. Sub
- 41.6 kV
- 69 kV
- 69 kV Dbl
- 69 kV Tpl
- 115 kV
- 115/69 kV Dbl
- 69/115 kV Dbl
- 230 kV
- 230/69 kV Dbl
- 69/230 kV Dbl
- 345 kV
- 345/230 kV Dbl

# MPC GEOGRAPHICAL SYSTEM MAP



### Legend

- ▲ Dist. Sub
- ⊗ Manual Switch
- ⊗ Microwave Tower
- ⊗ Radio Tower
- ⊗ Repeater Station
- ⊗ SCADA
- ⊗ SCADA Controlled Switch
- Trans. Sub
- 41.6 kV
- 69 kV
- 69 kV Dbl
- 69 kV Tpl
- 115 kV
- 115/69 kV Dbl
- 69/115 kV Dbl
- 230 kV
- 230/69 kV Dbl
- 69/230 kV Dbl
- 345 kV
- 345/230 kV Dbl