

**Combined Application for Certificate of Corridor  
Compatibility and Route Permit**

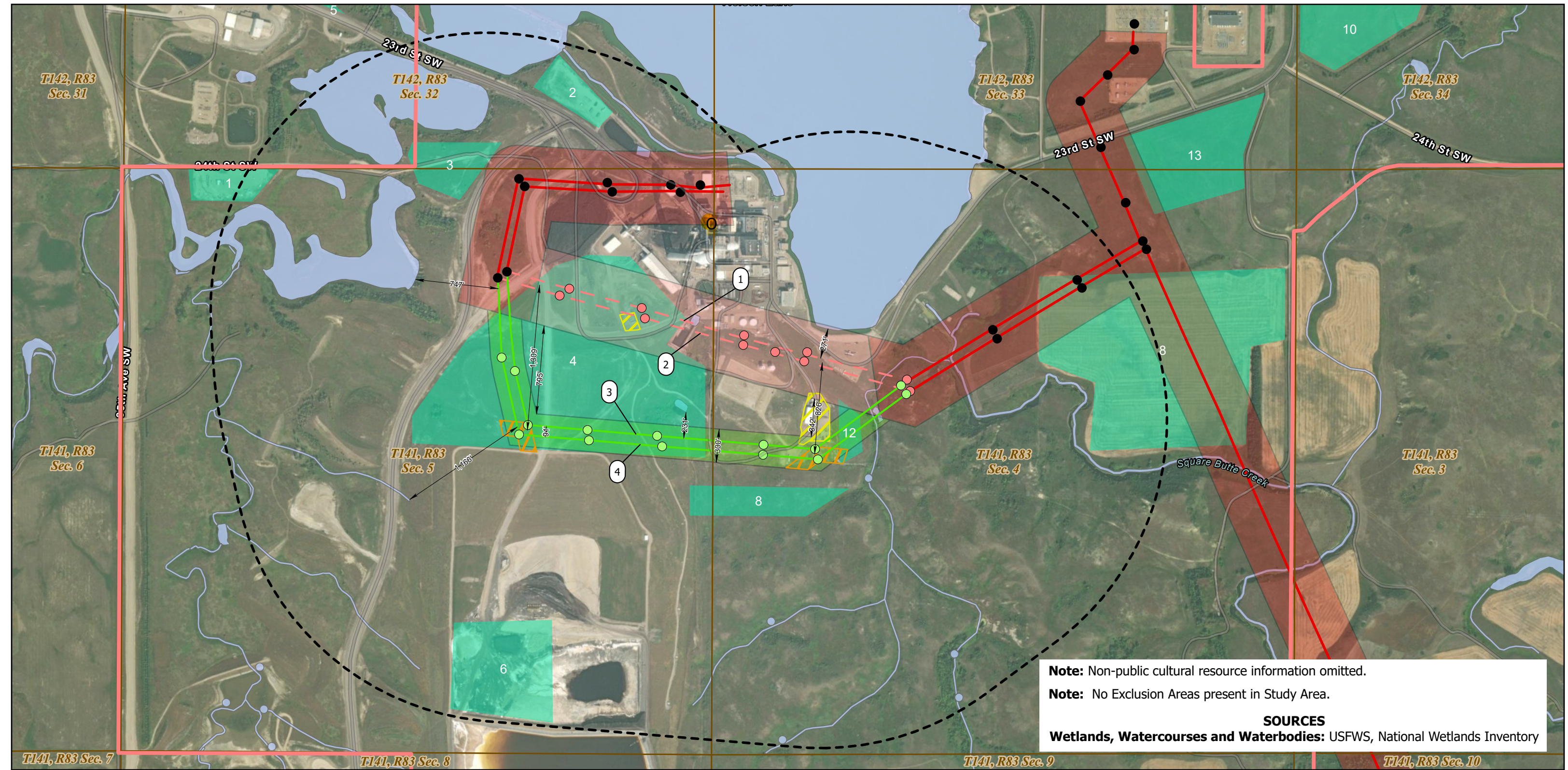
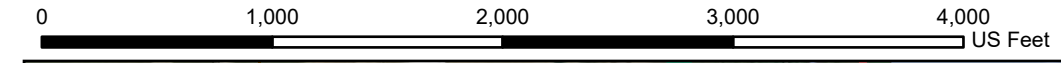
**Appendix A**

**Project Figures**

# FIGURE 1: 230 kV TUNDRA REROUTE

Oliver County, North Dakota

Date Exported: 8/22/2024 3:08 PM



**Note:** Non-public cultural resource information omitted.  
**Note:** No Exclusion Areas present in Study Area.

**SOURCES**  
**Wetlands, Watercourses and Waterbodies:** USFWS, National Wetlands Inventory

Line Segment	Total Line Length
1 (18A)	-3,748 FEET
2 (6A)	-3,852 FEET
3 (18A)	+4,947 FEET
4 (6A)	+5,110 FEET
<b>NET GAIN: +2,457 FEET</b>	

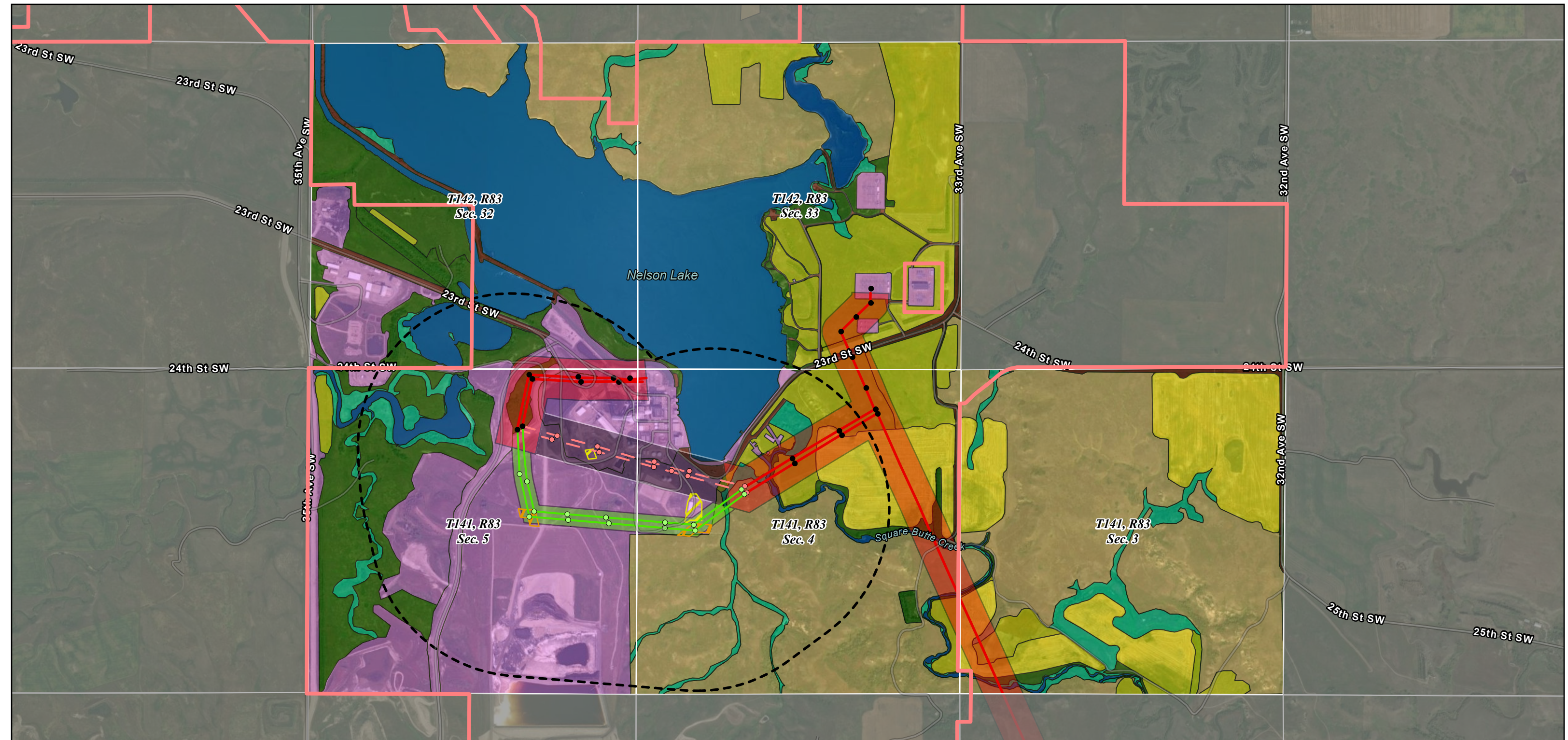
**Legend**

<p><b>AVOIDANCE AREAS</b></p> <ul style="list-style-type: none"> <li>MRY Station</li> </ul>	<p><b>STRUCTURES</b></p> <ul style="list-style-type: none"> <li>Existing Pole</li> <li>Proposed pole</li> <li>Poles to be Removed</li> </ul>	<p><b>230 kV TRANSMISSION LINE</b></p> <ul style="list-style-type: none"> <li>Existing Line</li> <li>Line to be Removed</li> <li>Proposed Line</li> </ul>	<p><b>CONSTRUCTION AND WORK AREAS</b></p> <ul style="list-style-type: none"> <li>Re-Route Laydown and Staging Area</li> <li>Line Tensioning Area</li> <li>Tundra Laydown Areas</li> </ul>	<p><b>230 kV TRANSMISSION LINE CORRIDOR</b></p> <ul style="list-style-type: none"> <li>Existing Right of Way (600 Ft.)</li> <li>ROW to be Retired (600 Ft.)</li> <li>Proposed Study Corridor (300 Ft.)</li> </ul>	<p><b>REFERENCE LAYERS</b></p> <ul style="list-style-type: none"> <li>Wetlands, Watercourses and Waterbodies</li> <li>PLSS Sections</li> <li>Study Area</li> <li>Boundary of MPC Owned Parcels</li> </ul>
---	--	---	---	---	---

# FIGURE 2: 230 kV TUNDRA REROUTE: LAND USE MAP

Oliver County, North Dakota

Date Exported: 8/22/2024 3:23 PM



### Legend

<p><b>STRUCTURES</b></p> <ul style="list-style-type: none"> <li>● Existing Pole</li> <li>○ Proposed pole</li> <li>○ Poles to be Removed</li> </ul>	<p><b>230 kV TRANSMISSION LINE</b></p> <ul style="list-style-type: none"> <li>— Existing Line</li> <li>— Line to be Removed</li> <li>— Proposed Line</li> </ul>	<p><b>230 kV TRANSMISSION CORRIDOR</b></p> <ul style="list-style-type: none"> <li>Existing Right of Way (600 Ft.)</li> <li>ROW to be Retired (600 Ft.)</li> <li>Proposed Study Corridor (300 Ft.)</li> </ul>	<p><b>OTHER POLYGONS</b></p> <ul style="list-style-type: none"> <li>Re-Route Laydown and Staging Area</li> <li>Line Tensioning Area</li> <li>Boundary of MPC Owned Parcels</li> <li>Study Area</li> <li>PLSS Sections</li> </ul>	<p><b>LAND COVER TYPE</b></p> <ul style="list-style-type: none"> <li>Crops / Hay</li> <li>Grazed</li> <li>Industrial/Disturbed</li> <li>Landscaped / Undeveloped</li> <li>Open Water</li> <li>Roads / Roadside</li> </ul>	<p>Wetlands / Riparian</p>
--	---	--	--	---	----------------------------

### SOURCES

Land Cover Type: Derived from internal analysis of aerial imagery and field observations.