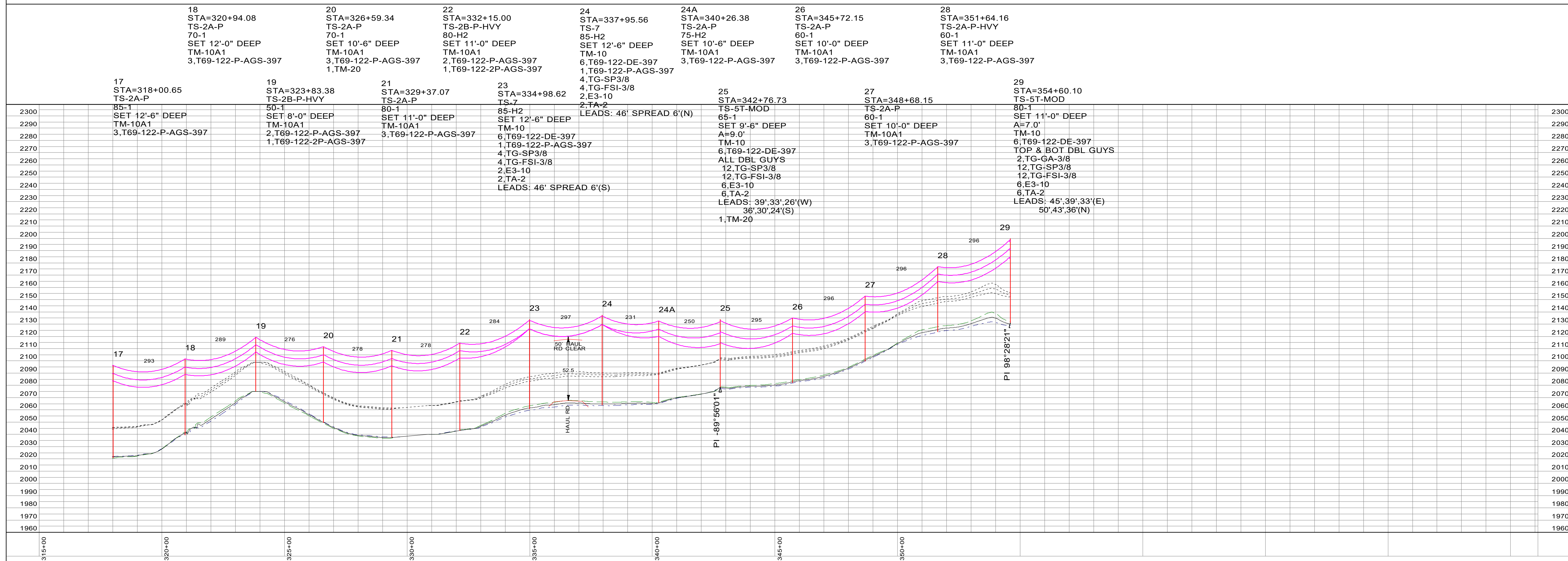
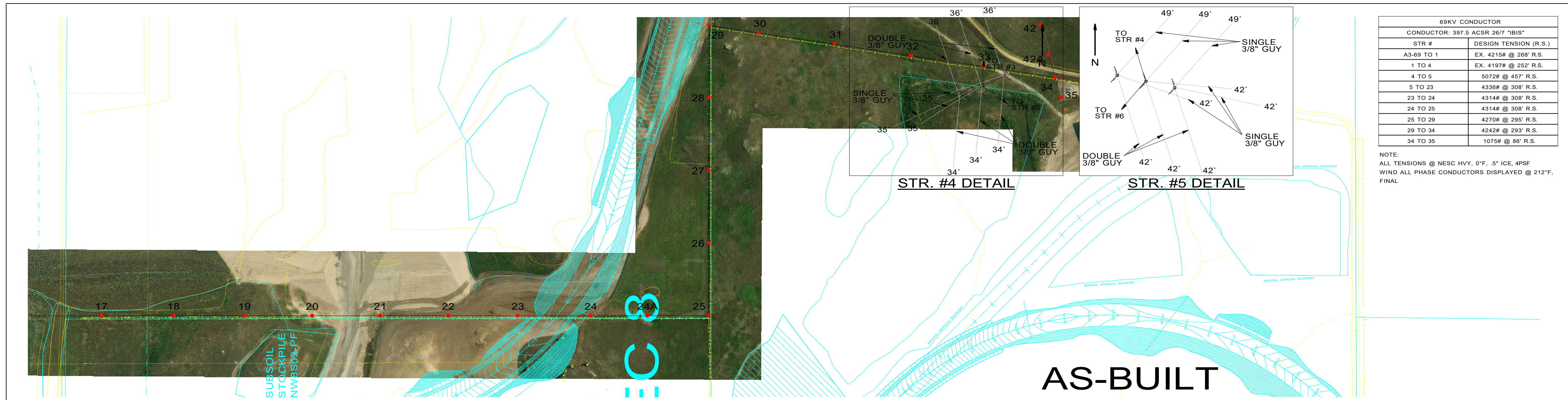
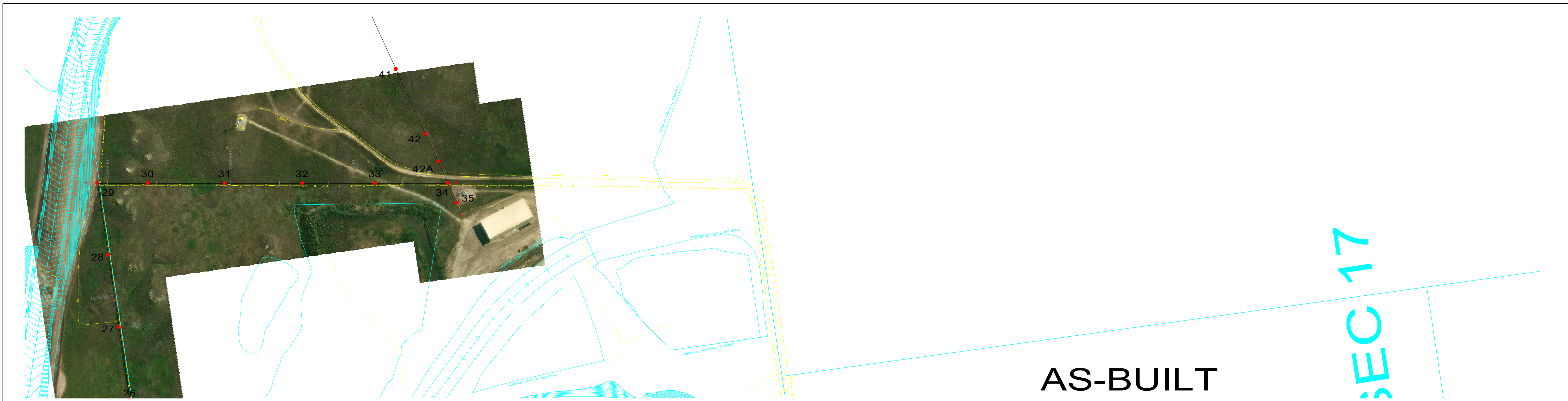


NOTES:
 1. CONDUCTOR: 397.5 ACSR 26/7 "IBIS" DISPLAYED AT 212°F (100°C), FINAL
 2. GROUND CLEARANCE LINE SHOWN AT 23.7' (RUS+2')

NO.	DATE	REVISIONS	BY	PROJECT #	R22.12030	DRAWN BY:	CMA	NORTH ←	200.0 FT. → HORIZ. SCALE 40.0 FT. → VERT. SCALE	FROM: MRY PLANT TO: BNI COAL	69KV TRANS. LINE CS-5	MINNKOTA POWER COOPERATIVE, INC. GRAND FORKS, N. DAK.
0	01/05/2026	AS-BUILT	CMA	WO #		CHECKED BY:	MPE		DATE: JULY 2023	STR NO. A3 TO STR NO. 17	MPC ASSET:	SHEET 1 OF 3
						APPROVED:	CMA					



NO.	DATE	REVISIONS	BY	PROJECT #	R22.12030	DRAWN BY:	CMA	NORTH	200.0 FT. HORIZ. SCALE 40.0 FT. VERT. SCALE	DATE: JULY 2023	FROM: MRY PLANT TO: BNI COAL	69KV TRANS. LINE CS-5	MPC ASSET:	MINNKOTA POWER COOPERATIVE, INC. GRAND FORKS, N. DAK.
0	01/05/2026	AS-BUILT	CMA	WO #	CHECKED BY:	MPE								
					APPROVED:	CMA								



AS-BUILT

SEC 17

28 STA=351+64.16 TS-2A-P-HVY 60-1 SET 11'-0" DEEP TM-10A1 3,T69-122-P-AGS-397	30 STA=356+64.17 TS-2A-P-HVY 50-1 SET 10'-0" DEEP TM-10A1 3,T69-122-P-AGS-397 1, TM-20	32 STA=362+92.24 TS-2A-P 65-1 SET 11'-0" DEEP TM-10A1 3,T69-122-P-AGS-397	34 STA=368+87.15 TS-5T-MOD 65-1 SET 9'-6" DEEP A=7.0' TM-10 3, TM-JUMPER 6, T69-122-DE-397 3, T69-122-P-AGS-397 SINGLE GUYS(E) & MID GUY(S)
---	---	---	--

29 STA=354+60.10 TS-5T-MOD 80-1 SET 11'-0" DEEP A=7.0' TM-10 6,T69-122-DE-397 TOP & BOT DBL GUYS 2,TG-GA-3/8 12,TG-SP3/8 12,TG-FSI-3/8 6,E3-10 6,TA-2 LEADS: 45',39',33'(E) 50',43',36'(N)	31 STA=359+76.96 TS-2A-P 55-1 SET 9'-6" DEEP TM-10A1 3,T69-122-P-AGS-397	33 STA=365+88.72 TS-2B-P-HVY 60-1 SET 10'-0" DEEP TM:10A1 2,T69-122-P-AGS-397 1,T69-122-2P-AGS-397	35 STA=369+74.12 1/2 TS-5 65-H1 GUY LEADS: 54',48',42" W (1)TM-9 W/RODS (3)TM-GG (3)TG-1 (3)TM-GS (1)TM-10-1 3,T69-122-DE-397 1, TM-20
---	--	---	--



NO.	DATE	REVISIONS	BY	PROJECT #	R22.12030	DRAWN BY:	CMA		200.0 FT. HORIZ. SCALE 40.0 FT. VERT. SCALE DATE: JULY 2023	FROM: MRY PLANT TO: BNI COAL STR NO. 28 TO STR NO. 35	69KV TRANS. LINE CS-5 MPC ASSET:	MINNKOTA POWER COOPERATIVE, INC. GRAND FORKS, N. DAK. SHEET 3 OF 3
0	01/05/2026	AS-BUILT	CMA	WO #	CHECKED BY:	MPE						
					APPROVED:	CMA						