



# Certificate of Public Convenience and Necessity / Electric Service Agreement

## Informal Hearing – Case Nos. PU-24-330 / PU-24-332 January 14, 2025

15 PU-24-330 Filed 01/13/2025 Pages: 9  
Informal Hearing Presentation  
Montana-Dakota Utilities Co.  
Travis Jacobson, Director Reg. Affairs

16 PU-24-332 Filed 01/13/2025 Pages: 9  
Informal Hearing Presentation  
Montana-Dakota Utilities Co.  
Travis Jacobson, Director Reg. Affairs



# MONTANA-DAKOTA UTILITIES CO.

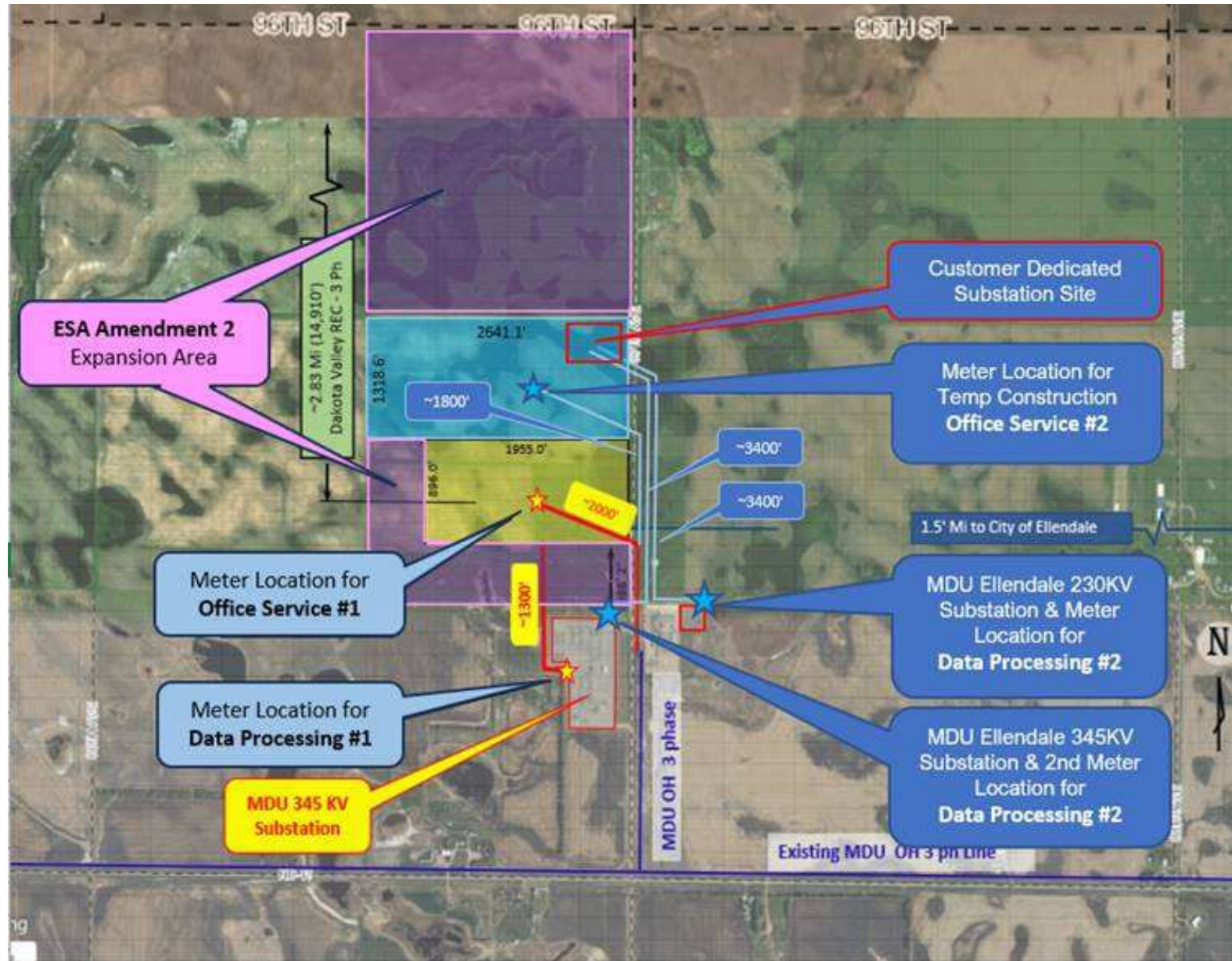
*A Subsidiary of MDU Resources Group, Inc.*

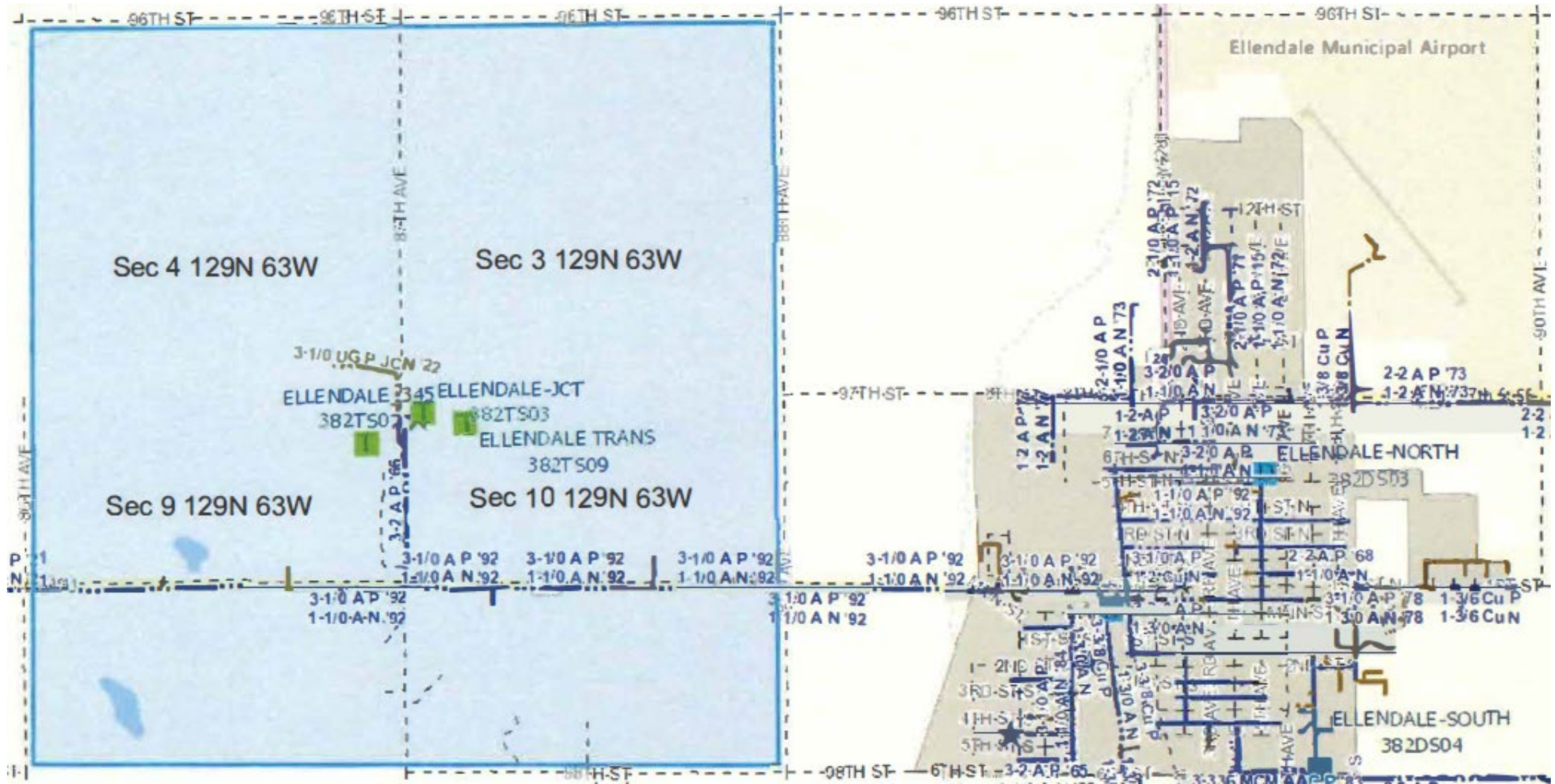
***In the Community to Serve®***

# Certificate of Public Convenience & Necessity

Filed September 11, 2024

- Adds additional area adjacent to existing Certificate Numbers 5972, 5990 and 5991
- Within the service area agreement with Dakota Valley Cooperative which was approved March 27, 2024
- Completes the east one-half of Section 4
- Dakota Valley Cooperative will not protest and has submitted an email in support





# Electric Service Agreement – Amendment No. 2

Filed September 5, 2024

- Increases maximum amount of electric service from 225 MW to 350 MW
- Extends expiration date to August 31, 2030
- Modifies demand charges provision within Confidential Exhibit B
- Provides an updated map (same as CPCN)

# Impact on North Dakota customers

Customers benefit through the following:

- Transmission Rider
- Fuel and Purchase Power Adjustment
- Potential for incremental earnings sharing refunds

Annual Effect on Residential Customers:

- Approximately \$200 savings at full capacity

# Impact on North Dakota customers (cont.)

## Updated 1898 Study

- Study shows an increase in Fuel and Purchased Power Costs
- Study included full 530 MW of Applied Digital load

## Annual Effect on Residential Customers:

- Based on study, \$3-4 increase at full capacity

# Fuel & Purchased Power Impacts

Including 1898 market price information for Montana-Dakota's native load results in electric dispatch simulation model that includes self-generation costs to serve native load over MISO-only purchase

	2025 Total Fuel & Purchase Power Costs (\$1,000)	Percentage Increase of Fuel & Purchase Costs Over Base
Base	94,870.84	
Change Case 1	95,105.16	0.2%
Change Case 2	96,488.65	1.7%
Change Case 3	96,350.88	1.6%
Change Case 4	96,583.82	1.8%



**QUESTIONS?**



**MONTANA-DAKOTA**  
**UTILITIES CO.**

*A Subsidiary of MDU Resources Group, Inc.*

***In the Community to Serve®***