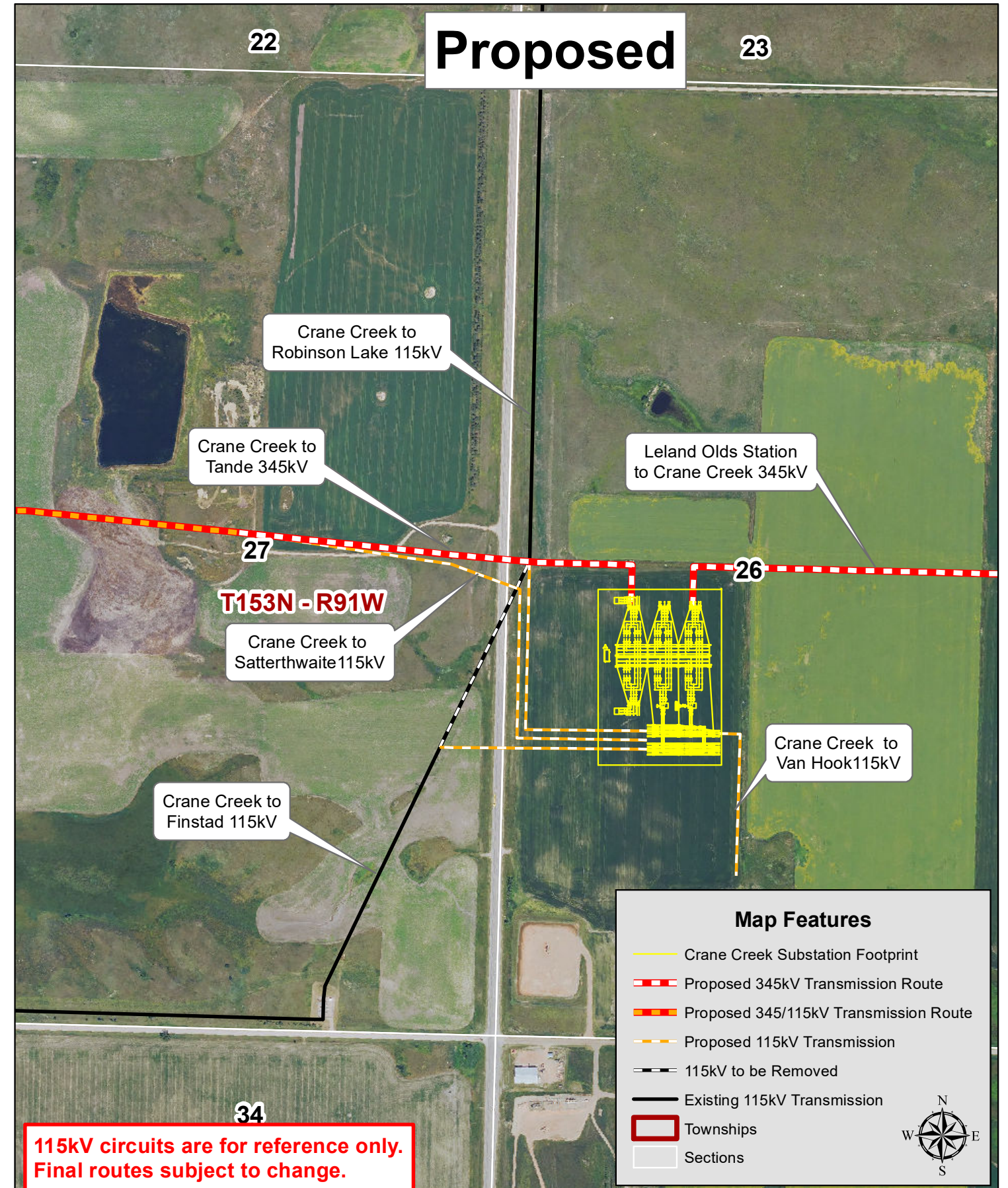


Crane Creek Substation Site Transmission Interconnection Plan



115kV circuits are for reference only. Final routes subject to change.

Map Features

- Crane Creek Substation Footprint
- Proposed 345kV Transmission Route
- Proposed 345/115kV Transmission Route
- Proposed 115kV Transmission
- 115kV to be Removed
- Existing 115kV Transmission
- Townships
- Sections