



Red River Communications Public Service Commission Informal Hearing

Topic: Wahpeton ILEC Status

Presented: September 25th, 2025

15 PU-25-185 Filed 09/25/2025 Pages: 46
Informal Hearing Presentation

Red River Rural Telephone Association
Tom Steinolfson, CEO / General Manager

15 PU-25-190 Filed 09/25/2025 Pages: 46
Informal Hearing Presentation

Red River Rural Telephone Association
Tom Steinolfson, CEO / General Manager



Introductions



Today's Presenters:

- Tom Steinolfson, CEO / General Manager
 - Kari Kleingartner, Sales and Marketing Manager
 - Jenna Lovgren, Customer Experience Supervisor
 - In attendance: Dennis Mitchell, Donna Thiel





Who We Are: Red River Communications

Presenter:

Tom Steinolfson, CEO / General Manager



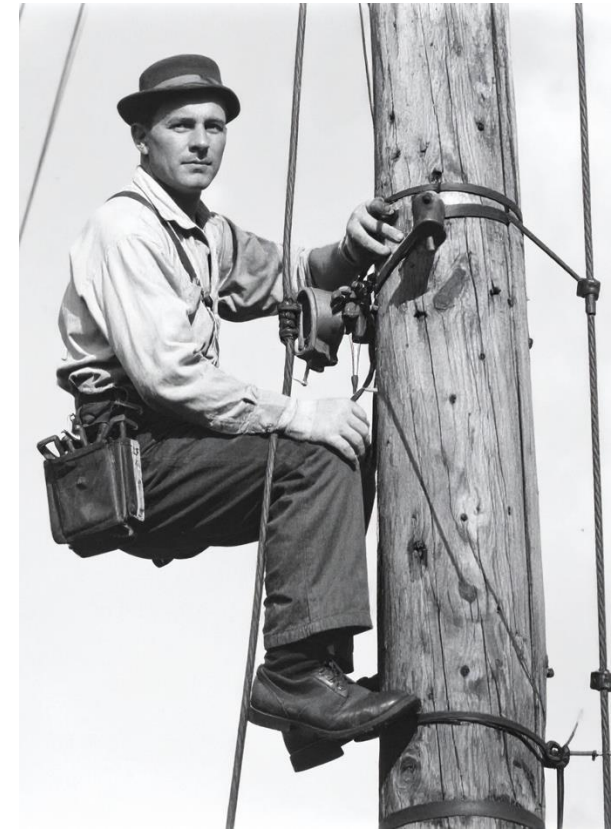
Who We Are: Red River Communications



- **Red River Communications** is a 74-year-old telecommunications cooperative, based in Abercrombie, ND
- **The Cooperative:** It is governed by a board of nine directors, each of whom resides within the service area and subscribes to its services.
- **Gigabit Communities:**
22 across North Dakota & Minnesota
- **Infrastructure Investment:** \$71,000,000
- **Contributions to the Local Economy:**
\$10,000,000
- **Current Employee Count:**
35 people

Who We Are: Red River History

- **1951 – Incorporation:** Founded on July 28th, 1951, as Barnesville Rural Telephone Association, the Cooperative consisted of three original exchanges: Kent, Rollag, Rural Barnesville, Minnesota.
- **1957 – Name Changed to Red River Rural Telephone Association:** Moved to Abercrombie, ND. Name change from Barnesville Rural Telephone Association to Red River Rural Telephone Association.
- **1959-1964 – First Exchange Additions:** Abercrombie, Colfax, and Mooreton, ND
- **1965 – New Exchange:** Great Bend Exchange – first all buried exchange in ND
- **1972 – Underground Movement:** Complete the project to bury all cables in the original exchanges.
- **1985 – New Heights:** A total of 1,801 access lines served.
- **1989 – Touchtone Dialing:** Digital switching allows for many advancements.



Who We Are: Red River History



- **1994 – The Internet Arrives:** The first members are connected to the internet. Started to offer dial up internet to Wahpeton and Breckenridge.
- **1996 – New Exchanges:** Hankinson & Lidgerwood exchanges purchased from Lumen (formerly US West).
- **1997 – Leave a Message:** Voicemail offered for the first time to landline phone customers.
- **2001 – DSL Launched:** DSL internet launched with speeds up to 128 kbps.
- **2002 – New Exchanges:** Fairmount and Wyndmere purchased from Citizens Communications.

- **2004 – Fiber Construction Begins:** Work begins to connect cooperative members to fiber-optic internet.
- **2009 – Ag Wireless Internet:** Red River expanded its services to customers outside of the cooperative areas by acquiring the Ag Wireless internet network.
- **2013 – New Name & Brand:** The company introduced "Red River Communications" as its new doing business as (DBA) name.



www.redrivercomm.com

Who We Are: Red River History

- **2015 – Gig Internet Arrives:** The first gigabit broadband connection is installed.
- **2016 – Cooperative Fiber Complete:** Completed 12-year fiber project for all cooperative members.
- **2020 – Expansion Areas:** The fiber broadband service expansion begins for customers outside the cooperative area.
- **2020 – Enter Wahpeton/Breckenridge:** Red River Communications acquires the customers and assets of 702 Communications in the Twin Towns of Wahpeton, ND, and Breckenridge, MN.
- **2022-2024 – Grants:** Several grants are awarded to Red River Communications, including:
 - **ND ARPA** Grant to build fiber in rural Wahpeton
 - Four **Minnesota DEED Border to Border Grants** covering rural Wilkin County and rural North Hawley
 - **USDA ReConnect Grant** to bring fiber broadband to rural Comstock/Sabin, Minnesota.
- **2025 – Completion of Twin Towns Fiber Mainline:** Mainline construction is completed in the summer of 2025, as part of a five-year project to provide fiber broadband internet to the Twin Towns of Wahpeton, ND, and Breckenridge, MN.



For a complete Red River Communications History & Timeline:
redrivercomm.com/history

The Wahpeton Exchange & Red River Communications

Presenter:

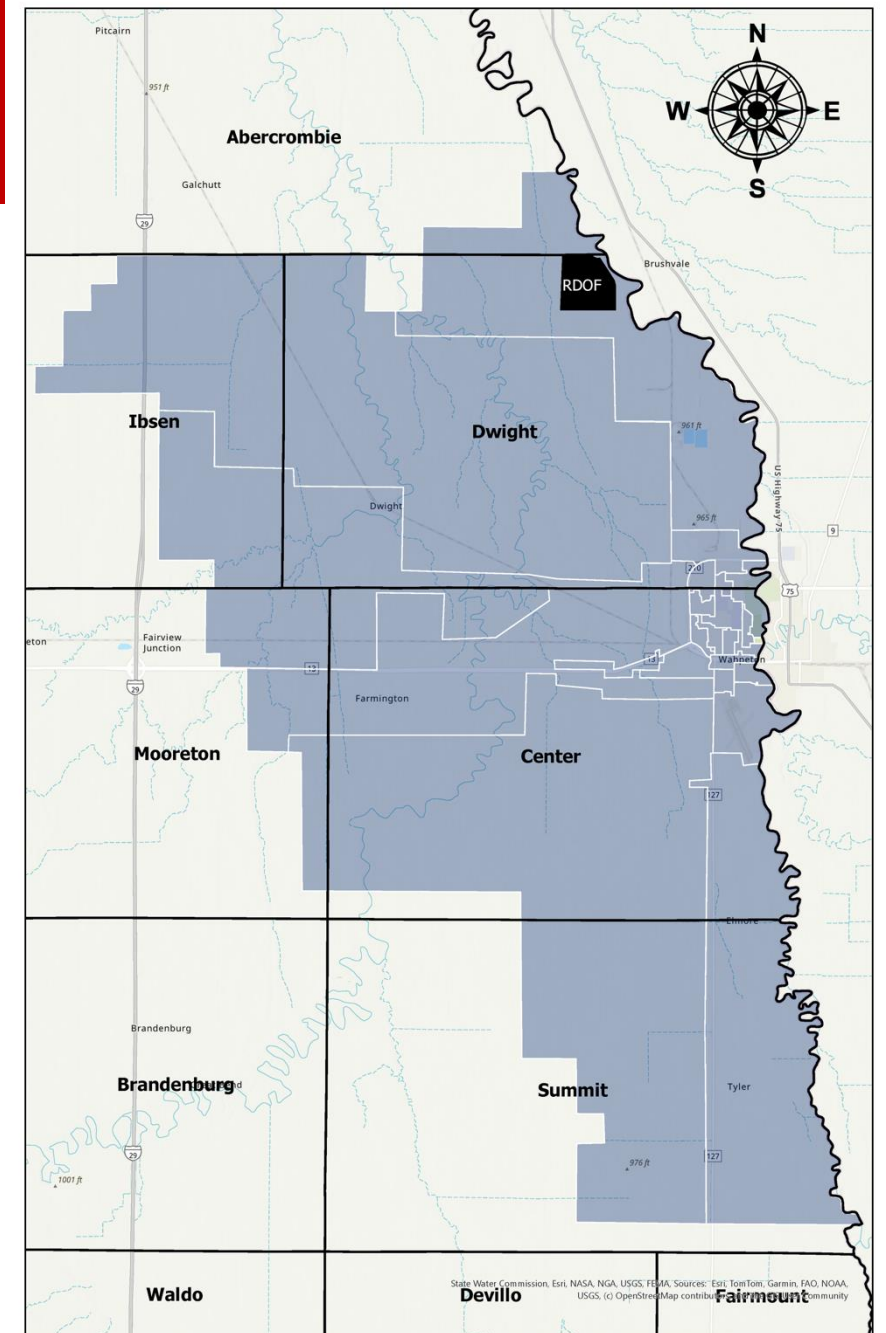
Tom Steinolfson, CEO / General Manager



About Wahpeton Exchange

- **History:**

- **Early 1900s** – First telephone service comes to Wahpeton, with small switchboards and manual operators connecting calls.
 - **1980s–1990s** – Transition to digital switching replaces older analog equipment, improving call clarity and reliability.
 - **2000s** – Broadband internet and fiber optics begin to transform the role of the telephone exchange, carrying not only voice but also high-speed data. 702 Communications enters the Wahpeton marketing, providing voice services.
 - **2014-2024** – The PSC receives telecom complaints about CenturyLink’s phone service in the Wahpeton Exchange.
 - **2021 – Red River Communications Enters Wahpeton/Breckenridge:** Red River Communications acquires the customers and assets of 702 Communications in the Twin Towns of Wahpeton, ND, and Breckenridge, MN.
- **Today:** Wahpeton is the manufacturing hub of the region thanks to the robust fiber-based telecommunication network from Red River Communications. The area now enjoys the best internet, digital TV, and phone service available in the country, continuing a legacy of connecting neighbors, businesses, and the wider world.



Red River Communications Timeline in Wahpeton

- **2009 – Ag Wireless:** Acquired wireless internet service in rural Wahpeton
- **2011 – Broadband Technologies Opportunity Program:** Built fiber to ND Job Service, Richland County Courthouse, St Catherines Nursing Home.
- **2017 – Fiber in Wahpeton Starts:** Start building to business in Wahpeton (Giant Snacks, etc.)
- **2020-2021 – Acquisition of 702 Communications:** (Val-Ed Joint Venture) assets and customers.
- **2021 – Construction in Wahpeton Starts:** Fiber project in Wahpeton and Breckenridge starts.
- **2022 – Work Continues in Wahpeton:** Downtown Wahpeton business corridor and residential neighborhoods. Also, work start on the Highway 13 Business Corridor, Richland County Courthouse & Businesses along the 210 bypass.
- **2023 – Work Continues in the City of Wahpeton**
- **2023 – ND ARPA Grant Awarded for Rural Wahpeton – Project Construction Starts**
- **2024 – Work Continues in Wahpeton & ARPA Grant Mainline completed**
- **2025 – Completion of Fiber Mainline:** Completion of the mainline fiber network within the city of Wahpeton, connecting customers. Start connecting apartments throughout the area.



This history proves Red River Communications can and will provide adequate proposed telecommunications services as the Commission has found in the past.



Red River in the Wahpeton Exchange

- **Red River financial investment in Wahpeton Exchange** – \$15.3 million total
- **Locations:**
 - **Residential** – 2,656 (in town) 407 (rural) = 3,063 total**
 - **Business/Farm** – 474 (in town) 141 (rural) = 615 total**
 - **Apartments/MDU** – 170 Multi-Dwelling Structures
 - **Townships** – 6
- **Square miles of Wahpeton exchange:** 300.81 square miles
- **Total Miles of Red River Communications Fiber – Wahpeton exchange:**
89.28 miles (in town) 224.08 miles (rural) = 313.36 total miles of fiber cable

Network and Service Capabilities

- Overview of 100% fiber network:
 - Supporting critical community services: Richland County Courthouse, EMS, Richland County Sheriff, Wahpeton Police Department, etc.
 - Network reliability and redundancy
 - Investment in fiber and the latest Wi-Fi 6-E technology



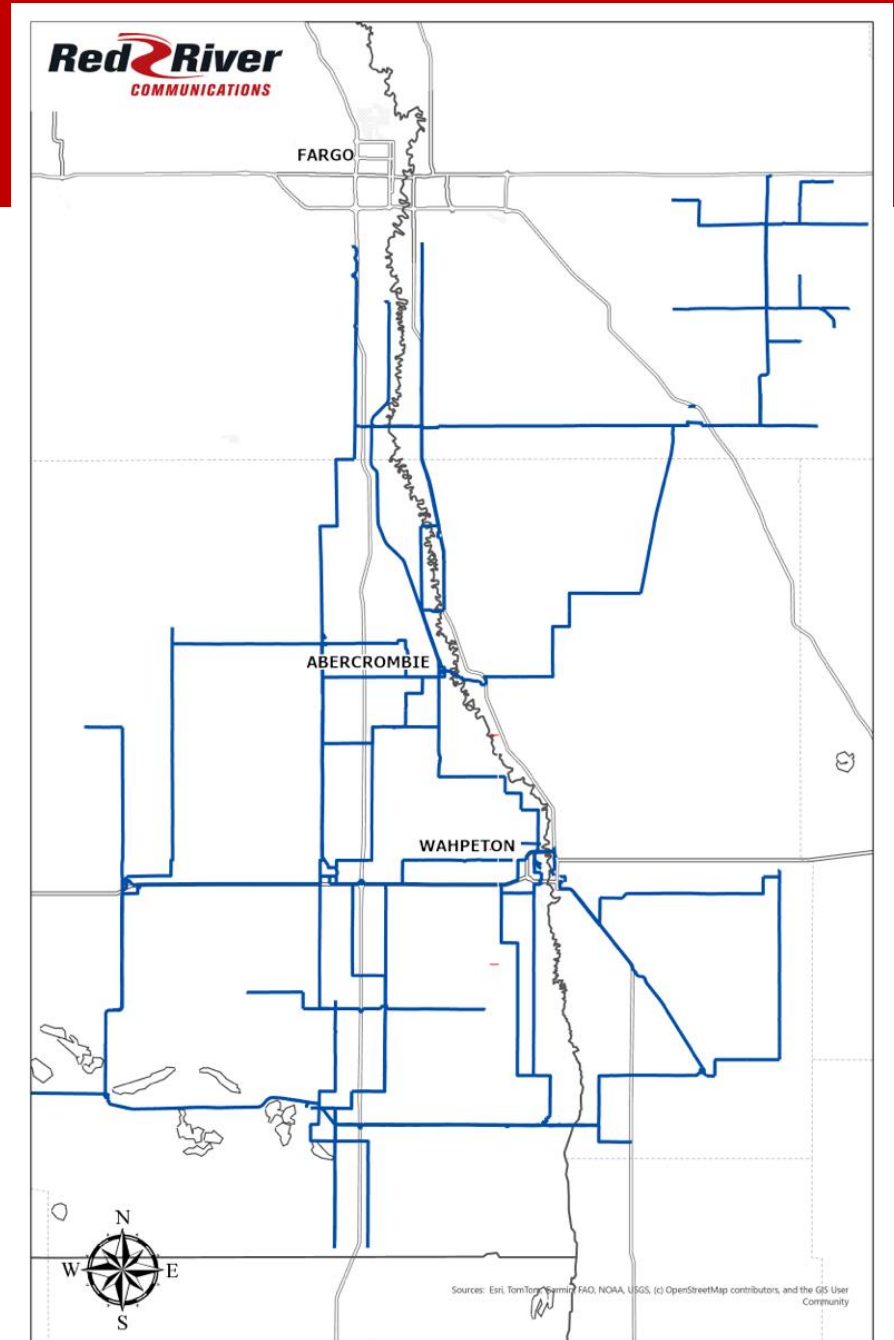
Red River Communications has proven to possess the technical, financial and managerial ability to provide telecommunications services in the Wahpeton Exchange.

www.redrivercomm.com

Network and Service

Red River Communications Fiber-Optic Broadband Network has:

- Five fiber-optic transport routes into the Wahpeton community.
- Each route is currently transporting multiple 100G connections.
- Routes can be expanded to 400G, with licensing and expanded optics.



Engineering Certification – Vantage Point

Nathan Weber

Senior VP of Engineering
Vantage Point Solutions

Letter of Support and
Engineering Certification



August 25, 2025

North Dakota Public Service Commission
600 E. Boulevard Ave., Dept. 408
Bismarck, ND 58505-0480

Subject: Letter of Support for Red River Rural Telephone Association Application to Become the Incumbent Local Exchange Carrier (ILEC) in the Wahpeton, ND Exchange

Dear Commissioners,

I am writing this letter in strong support of Red River Rural Telephone Association (RRRTA) application to become the Incumbent Local Exchange Carrier (ILEC) in the Wahpeton, North Dakota exchange. As the technical professional and engineer responsible for the design of RRRTA's fiber optic network in this area, I have firsthand knowledge of the superior infrastructure that RRRTA has deployed, and I believe it positions them as the ideal provider to serve the community's telecommunications needs now and into the future.

Over the past couple of years, RRRTA has undertaken a comprehensive overbuild of the entire town of Wahpeton and the entire rural area of the exchange with state-of-the-art fiber optic infrastructure. RRRTA can connect any customer in the Wahpeton exchange to their fiber optic network in 10 days or less. This network was designed and implemented to meet international standards, ensuring high performance, scalability, and compatibility with global best practices. The fiber cables are fully buried, providing enhanced protection against environmental factors and physical damage, which contributes to its exceptional survivability and reliability. Engineered for longevity, this network is projected to serve effectively for the next 30 to 50 years, minimizing the need for frequent upgrades and reducing long-term costs for both the provider and end-users.

In contrast, the current incumbent, Lumen, continues to rely primarily on copper cable infrastructure, much of which is likely more than 40 years old. While this legacy system has served its purpose in the past by delivering voice services, it is increasingly inadequate for meeting modern demands such as high-speed broadband, reliable voice services, and emerging technologies like 5G integration, IoT applications, and ultra-high-definition video streaming. RRRTA's fiber network, on the other hand, is inherently future-proof, capable of delivering gigabit-plus speeds and supporting the advanced services that residents and businesses in Wahpeton will require in the coming decades.



VANTAGEPNT.COM • 605-995-1777 • 2211 N. MINNESOTA ST, MITCHELL, SD 57301

My and my staff's involvement in the design process included rigorous planning to ensure redundancy, fault tolerance, and optimal coverage across urban and rural segments. The result is a robust, modern telecommunications backbone that not only outperforms the existing copper-based system but also promotes economic development, educational opportunities, and improved quality of life for the community by enabling equitable access to cutting-edge connectivity.

I urge the North Dakota Public Service Commission to approve RRRTA's application to assume ILEC status in the Wahpeton exchange. This transition would benefit consumers by replacing outdated infrastructure with a superior, reliable alternative, fostering competition, and aligning with the state's goals for broadband expansion and universal service.

Please feel free to contact me at 605-995-1747 or Nathan.Weber@Vantagepnt.com if you require any additional technical details or documentation regarding the network design.

Sincerely,

Nathan Weber, PE
Sr. Vice President of Engineering
License: ND 5809
Vantage Point Solutions

Vantage Point Solutions | Proprietary & Confidential
PROTECT. CONNECT. EMPOWER. RISE.

Why Overbuild CenturyLink in Wahpeton?

Red River Communications decided to enter the Wahpeton Exchange for several reasons:

- There had been a demand for better service from Wahpeton residents and businesses, many of whom had received little or no service at all.
- At the time, much of the Wahpeton Exchange was categorized as underserved or unserved on the FCC maps.
- The exchange is located near Red River's Cooperative service area, making a great fit for expansion of fiber services.
- **The company was aware of the following regarding CenturyLink:**
 - There had been a lack of infrastructure investments.
 - Official complaints had been filed with the North Dakota Public Service Commission by Lumen customers.
 - There was a noticeable absence of innovation and forward-thinking from CenturyLink.

Red River Communications has proven to have the fitness and ability to provide local exchange telecommunications in the Wahpeton exchange.



Sales, Marketing & Community Engagement

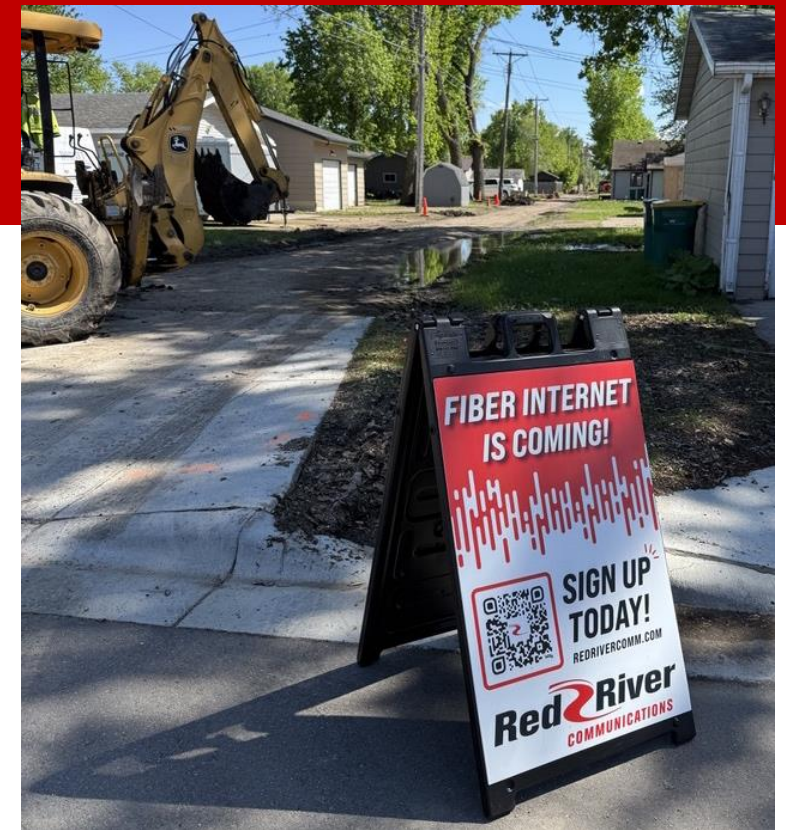
Presenter:

Kari Kleingartner, Sales and Marketing Manager



Sales Strategy: Personal Touch

- **A Personal Touch: "It's not sales, it's education."**
 - Sitting in someone's living room, walking them through service options and the sign-up process
 - Hiring people within the community.
 - Additional level of trust and community.
 - Upfront, transparent pricing, and terms and conditions



Red River
COMMUNICATIONS



Business and Residential Pricing

Residential Broadband Rates			
Speed Tier	Price	Wi-Fi	Ultimate Wi-Fi
250/250	\$69.50	\$7.95	\$13.95
500/500	\$89.50	\$7.95	\$13.95
1Gig / 1Gig*	\$99.50	\$7.95	\$13.95
2.5Gig / 2.5Gig	\$150.50	\$7.95	\$13.95

Residential Local Phone Service Rates	Price
Local Phone Service Rate*	\$29.95/month per line**
*Includes unlimited local calling, long-distance calling (US), caller ID and voicemail. **Additional taxes, fees and feature charges apply.	

Business Broadband Pricing					
Speed Tier	Price	Basic Business Wi-Fi	Enterprise Business Wi-Fi	1st Static IP	Addl IPs
250/250	\$89.50	\$9.95	Pricing Varies – custom quote	\$19.95	\$ 5.00
1 Gig / 1 Gig	\$169.50	\$9.95	Pricing Varies – custom quote		
2.5 Gig / 2.5 Gig	\$249.50	\$9.95	Pricing Varies – custom quote		

Business Phone Service Rates	Price
Local Landline Phone Service*	\$35/month base charge (per line)**
Hosted Phone System	Custom quote provided
*Includes unlimited local calling, long-distance calling (US), caller ID and voicemail. **Additional taxes, fees and feature charges apply.	

All pricing can be found on the website at:
www.redrivercomm.com



Sales in the Wahpeton Exchange

• Wahpeton Sales Promotions:

- \$50 Local High School Sports Boosters Club Donation Program
- Connecting Classrooms Promotion - \$100 donation to local school of choice with sign up.
- Refer-A-Friend Program- \$100 for both the referral and the referee
- 3 months free broadband service
- \$30 off for 12 months broadband service



Red River COMMUNICATIONS

FIBER FRIENDS

SPREAD THE WORD & GET REWARDED!

\$100 bill credit for you & your friend!
REDRIVERCOMM.COM/FIBER-FRIENDS

A promotional graphic for the "Fiber Friends" program. It features a group of six diverse people (three men and three women) smiling and standing together. The background is white with a red vertical bar on the left containing a fiber optic signal pattern. The Red River Communications logo is in the top right corner. The text "FIBER FRIENDS" is in large, bold, red letters, followed by "SPREAD THE WORD & GET REWARDED!" in black. Below the group photo, a blue banner contains the offer: "\$100 bill credit for you & your friend!" and the website "REDRIVERCOMM.COM/FIBER-FRIENDS".

Red River COMMUNICATIONS

CONNECTING OUR CLASSROOMS

*Help your school.
Improve your internet.*

Bringing Faster Internet and Stronger Schools to the Twin Towns.

\$100 DONATION TO THE SCHOOL OF YOUR CHOICE WHEN YOU SIGN UP FOR RED RIVER SERVICES!

A promotional graphic for the "Connecting Our Classrooms" program. It features two students, a boy and a girl, smiling and holding books. The background is white with a light gray pattern. The Red River Communications logo is in the top left corner. The text "CONNECTING OUR CLASSROOMS" is in large, bold, red letters. Below it, the text "Help your school. Improve your internet." is in a smaller, italicized font, followed by "Bringing Faster Internet and Stronger Schools to the Twin Towns." To the right of the students are several circular logos for local schools: St. John's Catholic School, St. Mary's Catholic School, and Circle of Nations School. At the bottom, a red banner contains the offer: "\$100 DONATION TO THE SCHOOL OF YOUR CHOICE WHEN YOU SIGN UP FOR RED RIVER SERVICES!".

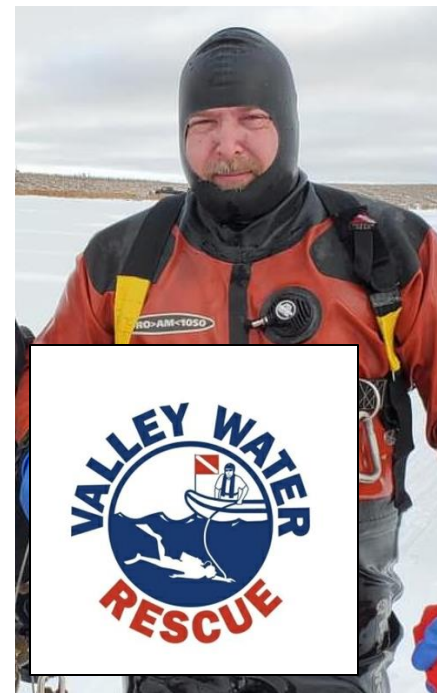
Community Engagement

Community Support Initiatives:

- Numerous Monetary Donations
- Equipment contributions
- Events & Promotions
- Community informational meetings
- Develop partnerships with local providers
- Common Cents Program
- Red River Scholarship Program



Community Engagement – Red River Staff



PR and Branding Efforts



PR and Branding Efforts





Customer Experience

"Connecting with our community through every interaction"

Presenter:

Jenna Lovgren, Customer Experience Supervisor



Multiple Ways to Connect

- Website & Online Applications
- Chat & Texting
- Phone & Email
- SmartHub Portal
- In-Person at our two local offices



Quality of Service

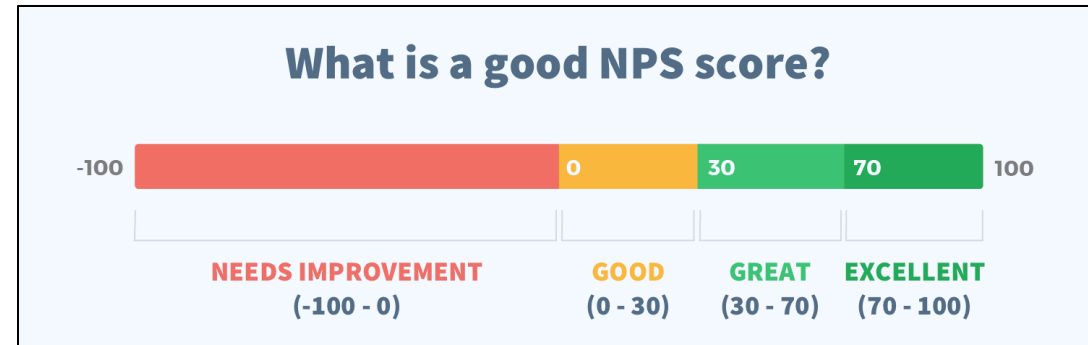
Net Promoter Score (NPS):

(calculated on a scale of -100 to 100)

Red River Communications NPS: 68**

Lumen / CenturyLink NPS: -71*

<i>Total outbound follow up calls in August.</i>		
Outbound Answered	Outbound Calls	Total Talk Time
382	468	72:45:49



What helps us achieve a high NPS score?

- Follow-up on every trouble ticket
- Follow-up on every install appointment



*Source: www.comparably.com/brands/lumen-centurylink

**Source: Red River Communications facilitates our NPS score with PlusOne Consultants

Local Commitment

- Our staff lives and works in the community – all within 40 miles of our headquarters
- Five employees live in the Wahpeton Exchange
- Billing is handled by our local team, not a call center
- True local presence: walk-in offices, 5 days a week



24/7 Support

- 24-hour assistance in collaboration with Integrated Services Packet Network (ISPN) for an extension of customer care
- Red River Communications On-Call Technicians
 - Available in the evenings, weekends and holidays



Going the Extra Mile

• White Glove Treatment

- Lifeline Program
 - ETC status would allow us to provide this program in Wahpeton
 - Ongoing efforts to support accessibility & affordability
- Personalized customer care beyond standard service: CX team home visits; TV remotes, cellular devices, education & sales
- Community Focused, Customer Driven



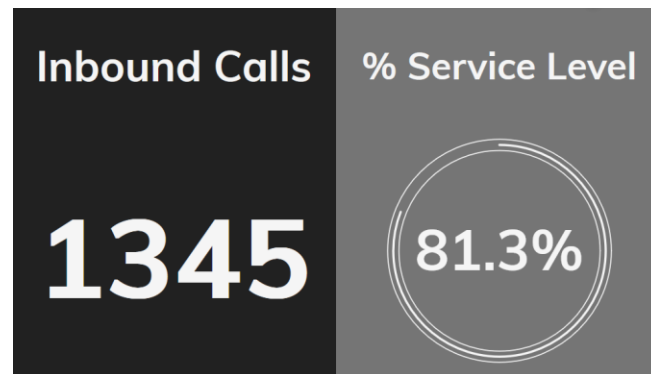
"Everyone involved has been absolutely the best! The representative, the person emailing me to set up an appointment, putting the box on the house, diggers, setup person, and the customer service has been great. Thank you!"

- Jamie K., Wahpeton Resident

Stats & Engagement

- Trouble Ticket Repair Time – Same Day Resolution
 - On average, in the month of August, our repair time ranged from 13 minutes to 4.5 hours
- Voice of the Customer Surveys
 - In our build areas, we are averaging 100% satisfaction on all surveys returned

Phone Call Stats – August 2025



Service level is measured by the number of calls answered within 10 seconds. Stats provided from SINCH phone reporting

Community Support

Presenter:

Tom Steinolfson, CEO / General Manager



Richland County Commission



Tim Campbell

Richland County Commission Chairperson



Dear North Dakota Public Service Commissioners,

On behalf of the Richland County Commission, I am writing to express strong support for Red River Communications' application for Incumbent Local Exchange Carrier (ILEC) status in the Wahpeton Exchange. As the Commission Chairperson, I have had the privilege of working closely with our communities and have witnessed firsthand the critical role that modern, reliable telecommunications play in the vitality of our region.

Richland County residents and businesses rely on reliable broadband and voice services to connect with employment, education, healthcare, and emergency services. Red River Communications has a proven track record of delivering these essential services throughout our county. They have made significant investments in building fiber-optic infrastructure, providing world-class connectivity to both rural and urban areas. Their locally based customer service and strong community presence differentiate them as a trusted partner.

Granting Red River Communications ILEC status in the Wahpeton Exchange will provide long-term stability, encourage continued infrastructure investment, and ensure that our citizens benefit from reliable services delivered by a cooperative that is directly accountable to the people it serves. This designation will not only strengthen Wahpeton's economic competitiveness but also enhance the quality of life for families, businesses, schools, and healthcare facilities across the exchange.

The Commission is confident that Red River Communications is well-positioned to assume this role and meet the responsibilities of an ILEC. I respectfully urge the Federal Communications Commission to approve its application.

Thank you for your consideration.

Sincerely,

Tim Campbell
Chairperson

City of Wahpeton



Brett Lambrecht, Wahpeton Mayor

Richland County Emergency Management Director



CITY OF WAHPETON MAYOR

1900 4th Street North · PO Box 490 · Wahpeton, ND 58074-0490 · Phone 701-642-8448 · Fax 701-642-1428



September 5th, 2025

ND Public Service Commission
600 E Blvd Avenue #408
Bismarck, ND 58505

RE: Red River Communications Company

Dear ND Public Service Commission:

I am writing to give your updates on the great strides that Red River Communications have made in the City of Wahpeton and Richland County.

As the Mayor of Wahpeton and also the Richland County Emergency Management Director, I see first hand the world class technology and Service that Red River Communications delivers to our area and region.

The past two summers in Wahpeton alone Red River Communications has placed all new Fiber for Internet, Phone, Managed Wi-Fi, Security, TV, and Cellular Service for both Residential and Business Services.

Leadership, integrity and accountability are important to me, in recent conversations and meetings with Tom Steinolfson, the company knows what hard work and investing in our Communities in North Dakota.

They give back to all communities they serve with programs like the Common Cents Program, Scholarships, Community Grant Programs, E-sports Sponsorships, etc.

As we look to the future, I feel so confident moving forward with Red River Communications and seeing all the progress that will keep happening in Wahpeton, Richland County and all our Communities in North Dakota

Sincerely,

A handwritten signature in blue ink that reads "Brett Lambrecht".

Brett Lambrecht, Mayor
Brett Lambrecht – Richland County Emergency Management Director.

Wahpeton/Breckenridge Chamber of Commerce



“We’d heard good things and wanted a partner who could understand the needs of a small team like ours. We wanted reliability, flexibility, and support. I’d absolutely recommend this (hosted phone) system and Red River Communications to other nonprofits or small businesses. It’s been a game-changer for us.”

Katie Rauber

Executive Director
Wahpeton and Breckenridge
Chamber of Commerce

Chahinkapa Zoo

“It was a quick and painless process! Red River Communications took care of everything, and once work began, it only took a few days of a wonderfully non-invasive operation. Our team was informed of all the steps along the way, and the park remained open during the “seamless” installation. Now guests can use their cards, communication between locations is reliable, and we can focus on the animals.”

Kathy Diekman

Chahinkapa Zoo Executive Director



ETC in Wahpeton Exchange

The public interest will be served to designate Red River Communications the Eligible Telecommunications Carrier in the Wahpeton exchange for purposes of receiving universal support.



Lumen / CenturyLink Wahpeton Exchange

Presenter:

Tom Steinolfson, CEO / General Manager



Discussion on Lumen Deficiencies

- **Lumen / CenturyLink in the Wahpeton Exchange**
 - Lack of investment and missed opportunities
 - CAF-2 (Connect America Fund – Round 2)
 - ND - ARPA grants (Capital Project Fund)
 - No Lumen infrastructure within Wahpeton's three newest housing developments
 - Prairie Flats, Rosewood Edition and Legacy Lakes Development
 - Locates called in to confirm this statement
 - Lack of serviceability of the Wahpeton exchange
 - Evidence of poor maintenance and service

Photo Evidence – CenturyLink Facilities

ArcGIS Photo Evidence Portal

<https://arcg.is/19yTXD3>

Future Goals of Red River in Wahpeton



- **Be the Best:** To be the premiere communications business for the Wahpeton community.
- **Local Office:** We commit to always having a physical office presence in the Wahpeton community.
- **Economic Development Support:** Support existing businesses and help recruit businesses to the community.
- **10 GIG Service:** Goal to have 10 Gig service to all business locations.
- **Future Expansion:** When there is a need, our team will help research and find services to help support that need.

CenturyLink Response to Case No. PU-25-185 & Case No. PU-25-190*

*Comments Filed on July 18th, 2025

- **PAGE 2 of Comments:**

- CenturyLink currently serves a significant number of customers in this exchange. At the end of 2024, CenturyLink served 228 voice customers and a significant number of broadband customers. **The Wahpeton exchange is a part of a cross border exchange that serves part of Minnesota.** CenturyLink must have the authority to continue to serve these customers.
- Nonetheless, CenturyLink **does not object** to the commission assigning Red River as an incumbent local exchange carrier and an eligible telecommunications carrier in this exchange. To have ILEC status recognized by the FCC, Red River must seek FCC approval of its ILEC designation and there may be other steps necessary to complete the process. **CenturyLink is willing to cooperate with those efforts,**



Importance of Only One Carrier of Last Resort

CenturyLink has a history of failing as a Carrier of Last Resort.

- CenturyLink has defaulted on federal deployment obligations.
- CenturyLink has not met the obligations on a state level.
- CenturyLink has a long list of registered complaints with the PSC.

Dual status would only be a disruptor of the regulatory stature and financial support that Red River Communications would face within the Wahpeton Exchange.

The “ASK” to the Commission:

Red River Communications asks that the Commission find:

1. That Red River Communications meets the requirements to be granted a Certificate of Public Convenience and Necessity (PC&N) as an ILEC in the Wahpeton Exchange.
2. That Red River Communications meets the requirements to be designated an ETC in the Wahpeton Exchange.
3. That CenturyLink’s Certificate of Public Convenience and Necessity (PC&N) and ETC designation in the Wahpeton Exchange be transferred to competitive local exchange service, and that Wahpeton Exchange be deemed relinquished from CenturyLink's ILEC study area.
4. Find that Red River Communications also meets the requirements of 251(h)(2) to be designated as an incumbent local exchange carrier for federal purposes under the Communications Act of 1934, as amended.

ILEC Status – Wahpeton Exchange

If CenturyLink was a new application for ILEC status, knowing what you know now, would you grant it?

If you would not grant it, I ask you, why you allow CenturyLink to stay in ILEC status for Wahpeton, North Dakota.

Tom Steinolfson, September 25th, 2025

Questions?

Thank you