

August 28, 2025

Mr. Jonathan Emmer  
Director, Reclamation Division  
600 E Boulevard Ave, Dept. 408  
Bismarck ND 58505-0480

**RE: Notice of Violation (NOV) 2501 – Remediation Plan**

Dear Mr. Emmer:

Westmoreland Beulah Mining LLC (WBM) acknowledges your August 28, 2025, correspondence and provides the following updated remediation plan with revised topsoil stripping plans, a revised topsoil stripping map, MVTL sample results, and WBM's plan for contaminated topsoil removal and replacement.

- 1) Attached please find Figure 1 a map showing the area from where contaminated topsoil will be removed and replaced.
- 2) Attached please find Table 1 showing the soil sample results as well as soil depths.
- 3) Attached please find Figure 2 showing the official soil sample results from MVTL.
- 4) WBM will completely remove all topsoil 25' around each sample point in the contaminated area that does not meet the requirements of NDAC 69-05.2-08-10(1)(a) and shown in Figure 1. Topsoil will be stripped and pushed into piles using dozers, and the topsoil in piles will be loaded and hauled off the affected area using a backhoe and articulating trucks. Motor graders will be used to ensure all topsoil is removed as well as maintaining a smooth subsoil surface. WBM will minimize disturbance of uncontaminated topsoil, but if access to isolated contaminated areas is necessary, WBM will use a dozer to strip a route to the contaminated area leaving the uncontaminated topsoil in a berm that will be pushed back across the access once respread of the contaminated area is complete.
- 5) The contaminated topsoil will be hauled using trucks to the SE ¼ of Section 20 in the Iron Pit area and placed in a temporary stockpile to be used at a future date as subsoil on WBM owned property.
- 6) WBM will replace the topsoil in the area shown in Figure 1 to the approved topsoil respread depth. Topsoil will be sourced from areas identified as "Christianson/Gunch" stockpiles 16-11-1 and 16-13-1. Subsoil will be ripped in advance of topsoil respread to alleviate compaction in affected areas.
- 7) WBM requests the PSC to approve the remediation plan prior to any work commencing in the area.
- 8) Once the remediation plan has been completed, the PSC will be notified in order to inspect the area.

Should you have any questions, please feel free to contact me.

Sincerely,



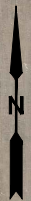
Rylan Sundsbak






Environmental Supervisor  
Westmoreland Beulah Mining LLC

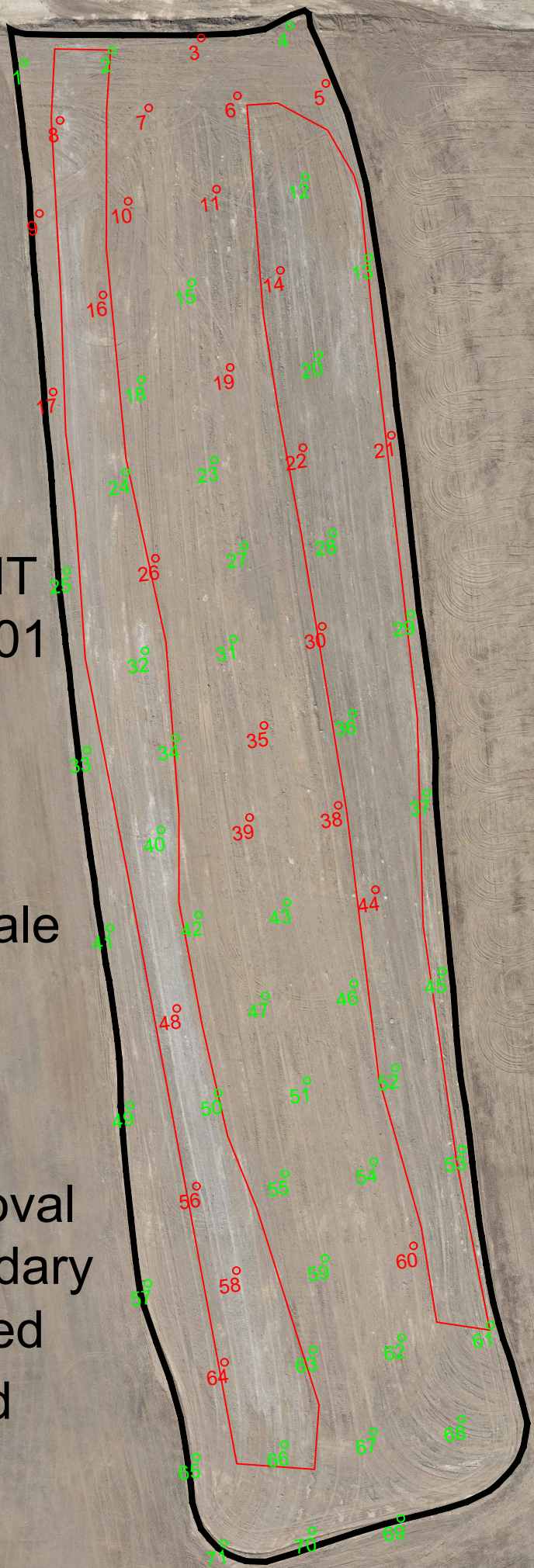
Cc: Monty Johnson (email [moljohnson@nd.gov](mailto:moljohnson@nd.gov))  
Juris Ore, (email [jore@westmoreland.com](mailto:jore@westmoreland.com))  
Jesse Noel (email [jnoel@westmoreland.com](mailto:jnoel@westmoreland.com))  
Dave Kuzara (email [dkuzara@westmoreland.com](mailto:dkuzara@westmoreland.com))  
Todd Briggs (email [tbriggs@westmoreland.com](mailto:tbriggs@westmoreland.com))

# GOLD PIT NOV 25-01



Not to Scale

-  Soil Removal Boundary
-  Passed
-  Failed



**TABLE 1 - Sample Results**

<b>Sample Description</b>	<b>EC @ 25C mmhos/cm</b>	<b>SAR</b>	<b>OM wt%</b>	<b>Topsoil Depth</b>
1	1.16	1.97	3.2	10.5
2	1.29	1.87	2.4	10.5
3	2.18	4.02	2.7	11.0
4	1.24	2.03	3.0	11.0
5	1.20	4.00	2.1	12.0
6	2.83	1.12	2.3	12.0
7	2.22	1.93	2.6	11.5
8	1.84	12.40	2.1	11.0
9	1.40	6.17	2.7	11.5
10	2.21	2.77	2.3	12.5
11	3.38	1.48	2.3	12.5
12	0.67	2.90	2.4	13.0
13	0.54	1.52	1.8	12.5
14	1.97	7.30	3.0	11.5
15	1.85	1.06	2.5	10.5
16	1.34	4.17	2.4	10.5
17	2.92	3.64	2.7	11.0
18	1.63	2.35	2.1	11.5
19	2.18	0.91	2.6	12.5
20	1.16	2.34	2.5	12.5
21	0.93	5.45	2.7	12.0
22	1.36	4.77	3.2	13.0
23	1.88	0.77	2.3	11.0
24	1.25	2.85	2.2	10.0
25	1.20	3.93	2.8	11.5
26	2.38	9.48	2.6	10.5
27	1.08	1.56	3.1	9.5
28	1.35	3.38	2.6	11.0
29	1.27	3.93	3.1	12.5
30	1.99	9.87	2.7	12.0
31	1.57	1.16	2.5	11.0
32	0.65	2.25	2.1	10.5
33	1.19	3.30	3.1	11.5
34	1.47	2.02	2.2	10.0
35	2.52	0.87	2.4	10.0

**TABLE 1 - Sample Results**

<b>Sample Description</b>	<b>EC @ 25C mmhos/cm</b>	<b>SAR</b>	<b>OM wt%</b>	<b>Topsoil Depth</b>
36	1.64	2.90	2.4	10.5
37	0.64	3.07	2.7	14.5
38	2.16	1.94	2.3	12.5
39	2.45	0.93	2.3	12.5
40	1.28	2.56	3.0	11.0
41	1.20	2.02	3.0	13.0
42	1.42	2.19	2.0	12.5
43	1.25	0.70	2.7	12.0
44	2.40	1.94	2.7	11.0
45	0.94	2.78	2.4	14.0
46	1.86	1.09	2.5	13.0
47	0.79	1.11	2.8	11.0
48	2.52	8.62	2.5	11.0
49	0.97	1.64	3.7	12.5
50	1.52	2.84	1.9	12.0
51	1.41	0.73	2.3	13.0
52	1.16	0.90	2.3	12.5
53	0.73	2.05	2.0	15.5
54	0.67	1.27	2.0	14.0
55	1.79	1.12	3.1	14.5
56	1.06	5.24	2.5	12.0
57	1.05	1.32	3.3	13.0
58	2.53	18.10	1.6	13.5
59	1.00	1.30	2.0	13.0
60	2.98	1.87	2.3	12.5
61	0.81	1.10	2.0	14.0
62	1.66	1.28	2.2	11.5
63	1.34	1.99	2.2	8.5
64	0.94	4.09	2.4	9.0
65	1.16	1.46	2.9	9.5
66	0.61	1.98	2.2	8.0
67	1.16	2.27	2.3	8.5
68	1.54	1.50	2.3	9.0
69	1.22	0.97	2.3	9.0
70	1.27	0.99	2.4	8.0
71	1.22	0.90	2.1	10.0



### MINNESOTA VALLEY TESTING LABORATORIES, INC.

1126 North Front St. ~ New Ulm, MN 56073 ~ 800-782-3557 ~ Fax 507-359-2890  
2616 East Broadway Ave. ~ Bismarck, ND 58501 ~ 800-279-6885 ~ Fax 701-258-9724  
1201 Lincoln Hwy. ~ Nevada, IA 50201 ~ 515-382-5486 ~ Fax 515-382-3885  
www.MVTL.com



Garrick Goodheart  
Westmoreland Beulah Mining Company  
PO Box 39  
Beulah, ND 58523

**Work Order Number:** 92218  
**Project Name:** Soil Samples

**Date Received:** 07/10/2025  
**Purchase Order:** 572324 000 OS

Laboratory Number	Sample Description	Depth	EC @ 25C mmhos/cm	Cat/EC Ratio	Ca meq/L	Mg meq/L	Na meq/L	SAR	CCE wt%	pH	OM wt%	Texture	Sand %	Silt %	Clay %	Sat Percent
92218001	1		1.16	13.3	6.6	4.3	4.6	1.97		7.3	3.2	scl	47.8	25.0	27.2	51.3
92218002	2		1.29	13.5	7.6	5.1	4.7	1.87		7.5	2.4	cl	42.8	25.0	32.2	56.7
92218003	3		2.18	13.7	10.5	7.3	12.0	4.02		7.2	2.7	scl	60.2	20.0	19.8	48.6
92218004	4		1.24	13.3	6.8	4.8	4.9	2.03		7.1	3.0	scl	50.2	25.0	24.8	45.0
92218005	5		1.20	13.4	4.5	3.5	8.0	4.00		7.4	2.1	scl	57.8	20.0	22.2	44.3
92218006	6		2.83	15.9	24.9	15.0	5.0	1.12		7.4	2.3	scl	47.8	25.0	27.2	53.5
92218007	7		2.22	15.1	16.2	10.2	7.0	1.93		7.6	2.6	scl	55.2	17.5	27.2	53.1
92218008	8		1.84	12.7	2.7	1.9	18.8	12.4		7.8	2.1	cl	45.2	22.5	32.2	49.9
92218009	9		1.40	12.9	3.9	2.8	11.3	6.17		7.7	2.7	scl	50.2	20.0	29.8	54.7
92218010	10		2.21	14.7	14.2	8.8	9.4	2.77		7.6	2.3	scl	55.2	20.0	24.8	53.2
92218011	11		3.38	16.1	27.7	19.6	7.2	1.48		7.5	2.3	scl	47.8	20.0	32.2	60.8
92218012	12		0.672	12.9	2.6	1.8	4.3	2.90		7.2	2.4	scl	62.8	17.5	19.8	40.4

MVTL guarantees the accuracy of the analysis done on the sample submitted for testing. It is not possible for MVTL to guarantee that a test result obtained on a particular sample will be the same on any other sample unless all conditions affecting the sample are the same, including sampling by MVTL. As a mutual protection to clients, the public and ourselves, all reports are submitted as the confidential property of clients, and authorization for publication of statements, conclusions or extracts from or regarding our reports is reserved pending our written approval.



**MINNESOTA VALLEY TESTING LABORATORIES, INC.**

1126 North Front St. ~ New Ulm, MN 56073 ~ 800-782-3557 ~ Fax 507-359-2890  
2616 East Broadway Ave. ~ Bismarck, ND 58501 ~ 800-279-6885 ~ Fax 701-258-9724  
1201 Lincoln Hwy. ~ Nevada, IA 50201 ~ 515-382-5486 ~ Fax 515-382-3885  
www.MVTL.com



**Work Order Number:** 92218  
**Project Name:** Soil Samples

**Date Received:** 07/10/2025  
**Purchase Order:** 572324 000 OS

Laboratory Number	Sample Description	Depth	EC @ 25C mmhos/cm	Cat/EC Ratio	Ca meq/L	Mg meq/L	Na meq/L	SAR	CCE wt%	pH	OM wt%	Texture	Sand %	Silt %	Clay %	Sat Percent
92218013	13		0.538	13.8	3.0	2.0	2.4	1.52		7.5	1.8	scl	60.2	17.5	22.2	42.6
92218014	14		1.97	13.9	6.2	4.4	16.8	7.30		7.6	3.0	cl	45.2	22.5	32.2	64.5
92218015	15		1.85	14.4	13.8	9.2	3.6	1.06		7.5	2.5	scl	52.8	20.0	27.2	55.5
92218016	16		1.34	13.7	5.7	3.6	9.0	4.17		7.4	2.4	scl	60.2	20.0	19.8	47.9
92218017	17		2.92	15.5	18.9	12.0	14.3	3.64		7.4	2.7	scl	47.8	22.5	29.8	59.1
92218018	18		1.63	14.1	9.4	6.9	6.7	2.35		7.6	2.1	scl	55.2	20.0	24.8	53.5
92218019	19		2.18	13.6	16.8	9.5	3.3	0.910		7.2	2.6	scl	50.2	22.5	27.2	53.2
92218020	20		1.16	12.1	5.4	3.7	5.0	2.34		6.5	2.5	sl	65.2	17.5	17.2	42.6
92218021	21		0.934	13.0	2.5	1.7	7.9	5.45		7.3	2.7	scl	55.2	20.0	24.8	43.5
92218022	22		1.36	13.6	5.0	3.6	9.9	4.77		7.6	3.2	scl	47.8	22.5	29.8	55.3
92218023	23		1.88	14.6	15.8	9.1	2.7	0.765		7.5	2.3	sc	45.2	20.0	34.8	54.1
92218024	24		1.25	13.5	6.5	3.9	6.5	2.85		7.3	2.2	scl	62.8	17.5	19.8	42.7
92218025	25		1.20	13.3	4.9	3.2	7.9	3.93		7.6	2.8	scl	52.8	20.0	27.2	55.4
92218026	26		2.38	13.0	5.8	4.1	21.1	9.48		7.4	2.6	c	37.8	22.5	39.8	62.0
92218027	27		1.08	13.1	6.7	3.9	3.6	1.56		7.3	3.1	scl	50.2	20.0	29.8	50.3
92218028	28		1.35	13.4	6.2	4.2	7.7	3.38		7.5	2.6	scl	55.2	20.0	24.8	50.6
92218029	29		1.27	12.9	4.7	3.6	8.0	3.93		6.7	3.1	scl	50.2	22.5	27.2	48.4
92218030	30		1.99	12.9	4.2	2.9	18.6	9.87		7.6	2.7	cl	40.2	22.5	37.2	56.0

MVTL guarantees the accuracy of the analysis done on the sample submitted for testing. It is not possible for MVTL to guarantee that a test result obtained on a particular sample will be the same on any other sample unless all conditions affecting the sample are the same, including sampling by MVTL. As a mutual protection to clients, the public and ourselves, all reports are submitted as the confidential property of clients, and authorization for publication of statements, conclusions or extracts from or regarding our reports is reserved pending our written approval.



### MINNESOTA VALLEY TESTING LABORATORIES, INC.

1126 North Front St. ~ New Ulm, MN 56073 ~ 800-782-3557 ~ Fax 507-359-2890  
2616 East Broadway Ave. ~ Bismarck, ND 58501 ~ 800-279-6885 ~ Fax 701-258-9724  
1201 Lincoln Hwy. ~ Nevada, IA 50201 ~ 515-382-5486 ~ Fax 515-382-3885  
www.MVT L.com



Work Order Number: 92218  
Project Name: Soil Samples

Date Received: 07/10/2025  
Purchase Order: 572324 000 OS

Laboratory Number	Sample Description	Depth	EC @ 25C mmhos/cm	Cat/EC Ratio	Ca meq/L	Mg meq/L	Na meq/L	SAR	CCE wt%	pH	OM wt%	Texture	Sand %	Silt %	Clay %	Sat Percent
92218031	31		1.57	13.7	11.1	7.0	3.5	1.16		7.5	2.5	scl	50.2	20.0	29.8	50.4
92218032	32		0.649	13.4	2.7	2.4	3.6	2.25		7.6	2.1	scl	52.8	22.5	24.8	49.3
92218033	33		1.19	14.4	6.1	3.7	7.3	3.30		7.6	3.1	sc	47.8	17.5	34.8	51.3
92218034	34		1.47	13.0	8.9	4.9	5.3	2.02		7.5	2.2	scl	55.2	17.5	27.2	40.7
92218035	35		2.52	15.7	22.9	13.1	3.7	0.872		7.4	2.4	scl	52.8	17.5	29.8	48.8
92218036	36		1.64	15.3	10.1	6.7	8.4	2.90		8.0	2.4	scl	50.2	20.0	29.8	45.2
92218037	37		0.642	13.2	2.3	1.8	4.4	3.07		7.0	2.7	scl	47.8	25.0	27.2	45.8
92218038	38		2.16	16.1	16.8	10.8	7.2	1.94		7.7	2.3	scl	55.2	17.5	27.2	48.8
92218039	39		2.45	16.1	22.3	13.2	3.9	0.926		8.0	2.3	scl	50.2	20.0	29.8	46.6
92218040	40		1.28	13.7	7.0	4.4	6.1	2.56		7.9	3.0	cl	45.2	22.5	32.2	50.6
92218041	41		1.20	13.0	6.9	3.9	4.7	2.02		7.8	3.0	scl	50.2	20.0	29.8	47.6
92218042	42		1.42	13.1	8.1	5.0	5.6	2.19		7.8	2.0	scl	55.2	17.5	27.2	41.2
92218043	43		1.25	13.3	9.7	5.1	1.9	0.698		7.7	2.7	scl	52.8	20.0	27.2	45.2
92218044	44		2.40	15.6	18.1	11.7	7.5	1.94		7.9	2.7	scl	52.8	20.0	27.2	48.0
92218045	45		0.944	12.9	4.1	2.9	5.2	2.78		7.6	2.4	scl	55.2	20.0	24.8	46.7
92218046	46		1.86	13.7	13.9	7.9	3.6	1.09		7.7	2.5	scl	57.8	17.5	24.8	46.2
92218047	47		0.786	12.7	5.0	2.8	2.2	1.11		7.8	2.8	scl	52.8	17.5	29.8	43.3
92218048	48		2.52	14.3	7.9	5.6	22.4	8.62		7.7	2.5	scl	52.8	17.5	29.8	50.1

MVT L guarantees the accuracy of the analysis done on the sample submitted for testing. It is not possible for MVTL to guarantee that a test result obtained on a particular sample will be the same on any other sample unless all conditions affecting the sample are the same, including sampling by MVTL. As a mutual protection to clients, the public and ourselves, all reports are submitted as the confidential property of clients, and authorization for publication of statements, conclusions or extracts from or regarding our reports is reserved pending our written approval.



**MINNESOTA VALLEY TESTING LABORATORIES, INC.**

1126 North Front St. ~ New Ulm, MN 56073 ~ 800-782-3557 ~ Fax 507-359-2890  
2616 East Broadway Ave. ~ Bismarck, ND 58501 ~ 800-279-6885 ~ Fax 701-258-9724  
1201 Lincoln Hwy. ~ Nevada, IA 50201 ~ 515-382-5486 ~ Fax 515-382-3885  
www.MVTL.com



**Work Order Number:** 92218  
**Project Name:** Soil Samples

**Date Received:** 07/10/2025  
**Purchase Order:** 572324 000 OS

Laboratory Number	Sample Description	Depth	EC @ 25C mmhos/cm	Cat/EC Ratio	Ca meq/L	Mg meq/L	Na meq/L	SAR	CCE wt%	pH	OM wt%	Texture	Sand %	Silt %	Clay %	Sat Percent
92218049	49		0.969	13.6	6.0	3.6	3.6	1.64		7.7	3.7	scl	50.2	20.0	29.8	52.4
92218050	50		1.52	14.1	8.4	5.5	7.5	2.84		8.1	1.9	scl	60.2	15.0	24.8	40.9
92218051	51		1.41	11.0	8.9	4.7	1.9	0.729		8.0	2.3	scl	52.8	17.5	29.8	46.8
92218052	52		1.16	13.3	8.5	4.6	2.3	0.899		7.5	2.3	scl	55.2	20.0	24.8	40.9
92218053	53		0.725	14.1	3.8	2.7	3.7	2.05		7.4	2.0	scl	60.2	17.5	22.2	38.2
92218054	54		0.665	13.4	4.1	2.5	2.3	1.27		7.5	2.0	sl	70.2	12.5	17.2	37.9
92218055	55		1.79	14.2	13.7	8.0	3.7	1.12		7.4	3.1	sc	47.8	15.0	37.2	46.0
92218056	56		1.06	14.0	3.5	2.4	9.0	5.24		7.7	2.5	scl	55.2	17.5	27.2	43.7
92218057	57		1.05	14.3	7.5	4.3	3.2	1.32		7.4	3.3	scl	62.8	10.0	27.2	48.6
92218058	58		2.53	11.0	2.0	1.6	24.3	18.1		8.2	1.6	cl	45.2	25.0	29.8	64.6
92218059	59		1.00	12.9	6.0	4.0	2.9	1.30		7.6	2.0	scl	52.8	20.0	27.2	43.9
92218060	60		2.98	17.8	27.0	17.2	8.8	1.87		7.4	2.3	scl	47.8	22.5	29.8	58.3
92218061	61		0.805	13.7	5.4	3.3	2.3	1.10		7.4	2.0	scl	62.8	15.0	22.2	38.0
92218062	62		1.66	14.8	12.9	7.6	4.1	1.28		7.6	2.2	scl	55.2	20.0	24.8	44.0
92218063	63		1.34	13.5	8.1	5.0	5.1	1.99		7.4	2.2	scl	57.8	20.0	22.2	40.8
92218064	64		0.939	14.3	3.7	2.5	7.2	4.09		7.8	2.4	scl	57.8	17.5	24.8	43.7
92218065	65		1.16	13.6	7.6	4.5	3.6	1.46		7.5	2.9	scl	57.8	20.0	22.2	44.3
92218066	66		0.609	13.8	3.2	2.0	3.2	1.98		7.3	2.2	scl	65.2	15.0	19.8	39.7

MVTL guarantees the accuracy of the analysis done on the sample submitted for testing. It is not possible for MVTL to guarantee that a test result obtained on a particular sample will be the same on any other sample unless all conditions affecting the sample are the same, including sampling by MVTL. As a mutual protection to clients, the public and ourselves, all reports are submitted as the confidential property of clients, and authorization for publication of statements, conclusions or extracts from or regarding our reports is reserved pending our written approval.



**MINNESOTA VALLEY TESTING LABORATORIES, INC.**

1126 North Front St. ~ New Ulm, MN 56073 ~ 800-782-3557 ~ Fax 507-359-2890  
2616 East Broadway Ave. ~ Bismarck, ND 58501 ~ 800-279-6885 ~ Fax 701-258-9724  
1201 Lincoln Hwy. ~ Nevada, IA 50201 ~ 515-382-5486 ~ Fax 515-382-3885  
www.MVTL.com



**Work Order Number:** 92218  
**Project Name:** Soil Samples

**Date Received:** 07/10/2025  
**Purchase Order:** 572324 000 OS

Laboratory Number	Sample Description	Depth	EC @ 25C mmhos/cm	Cat/EC Ratio	Ca meq/L	Mg meq/L	Na meq/L	SAR	CCE wt%	pH	OM wt%	Texture	Sand %	Silt %	Clay %	Sat Percent
92218067	67		1.16	13.5	6.5	4.0	5.2	2.27		7.5	2.3	scl	65.2	15.0	19.8	39.8
92218068	68		1.54	14.0	10.6	6.5	4.4	1.50		7.4	2.3	scl	57.8	20.0	22.2	41.4
92218069	69		1.22	13.0	8.4	5.0	2.5	0.966		7.2	2.3	scl	62.8	15.0	22.2	40.5
92218070	70		1.27	13.0	8.6	5.3	2.6	0.986		6.9	2.4	scl	60.2	17.5	22.2	33.0
92218071	71		1.22	12.6	8.3	4.8	2.3	0.899		7.0	2.1	sl	65.2	17.5	17.2	36.3

All data reported has been reviewed and approved by:

Stacy Zander, Bismarck Assistant Lab Manager Bismarck, ND

Texture Abbreviations: sic = silty clay sc = sandy clay cl = clay loam l = loam sil = silty loam ls = loamy sand c = clay sicl = silty clay loam scl = sandy clay loam si = silt s = sand sl = sandy loam

MVTL guarantees the accuracy of the analysis done on the sample submitted for testing. It is not possible for MVTL to guarantee that a test result obtained on a particular sample will be the same on any other sample unless all conditions affecting the sample are the same, including sampling by MVTL. As a mutual protection to clients, the public and ourselves, all reports are submitted as the confidential property of clients, and authorization for publication of statements, conclusions or extracts from or regarding our reports is reserved pending our written approval.