

**Voigt & State Trust Native Grasslands in Permit NACC-1302 according to Section 2.4.7.2 - Ecosite Acres by Owner**

Section	Landowner	Cp	Cy	CD	Ly	LyOv	LyTe	SL	Sa	Sy	SwLy	SwSy	ICp	TLy	VS	WM	NA	Total Acres
TI42N,R88W,SEC.6-W2,W2E2	State of ND	79.53	56.56	0	151.31	0	13.59	7.11	0	8.78	27.01	0	63.43	41.69	7.97	10.71	1.73	469.42
TI42N,R89W,SEC.1	Voigt, C & J	147.53	91.86	0.85	39.34	3.28	5.19	6.9	17.99	0.71	86.11	0	173.03	38.57	0	4.16	2.66	618.18
TI42N,R89W,SEC.12-N2N2	State of ND	6.66	43.82	0	69.69	3.34	0	0.28	0	0	2.79	0	2.29	24.67	0	1.6	0	155.14
TI43N,R88W,SEC.19-W2	Voigt, C & J	13.67	7.05	0	58.03	0.27	16.33	0.94	39.56	37.97	17.18	0	2.48	13.11	7.41	4.5	1.22	219.72
TI43N,R88W,SEC.30-W2,W2E2	Voigt, C & J	27.97	25.98	0	90.74	2.09	29.48	0	56.68	53.17	26.43	0	1.37	16.92	6.31	4.87	1.93	343.94
TI43N,R88W,SEC.31	Voigt, C & J	37.17	19.5	0	85.64	7.76	28.12	1.51	13.53	121.33	25.07	0	47.9	13.58	49.05	0.73	8.97	459.86
TI43N,R89W,SEC.24-SE4	State of ND	26.46	10.11	0	20.02	3.03	0.59	0.5	17.11	21.3	13.72	0	9.96	12.95	7.98	0.05	1.73	145.51
TI43N,R89W,SEC.24-SW4	Voigt, C & J	19.76	1.64	0	18.93	2.78	0	1.38	30.9	55.01	1.13	0	0.69	5.92	4.75	0.01	1.1	144
TI43N,R89W,SEC.25	Voigt, C & J	114.69	4.29	0.65	91.6	6.96	0	1.34	28.41	228.59	5.12	0	11.77	11.04	0.25	10.85	4.86	520.42
TI43N,R89W,SEC.36-N2,SW4	State of ND	94.26	86.86	0	40.27	0.64	0.22	3.5	4.77	45.55	40.72	0	68.46	38.77	17	2.78	8.12	451.92
TI43N,R89W,SEC.36-SE4	Voigt, C & J	20.48	41.38	1.08	15.02	0	0	0.21	0	33.27	12.37	0	20.08	7.26	0	0.42	0.89	152.46
	Total	588.18	389.05	2.58	680.59	30.15	93.52	23.67	208.95	605.68	257.65	0	401.46	224.48	100.72	40.68	33.21	3680.57
	Percent	16.0%	10.6%	0.1%	18.5%	0.8%	2.5%	0.6%	5.7%	16.5%	7.0%	0.0%	10.9%	6.1%	2.7%	1.1%	0.9%	100.0%

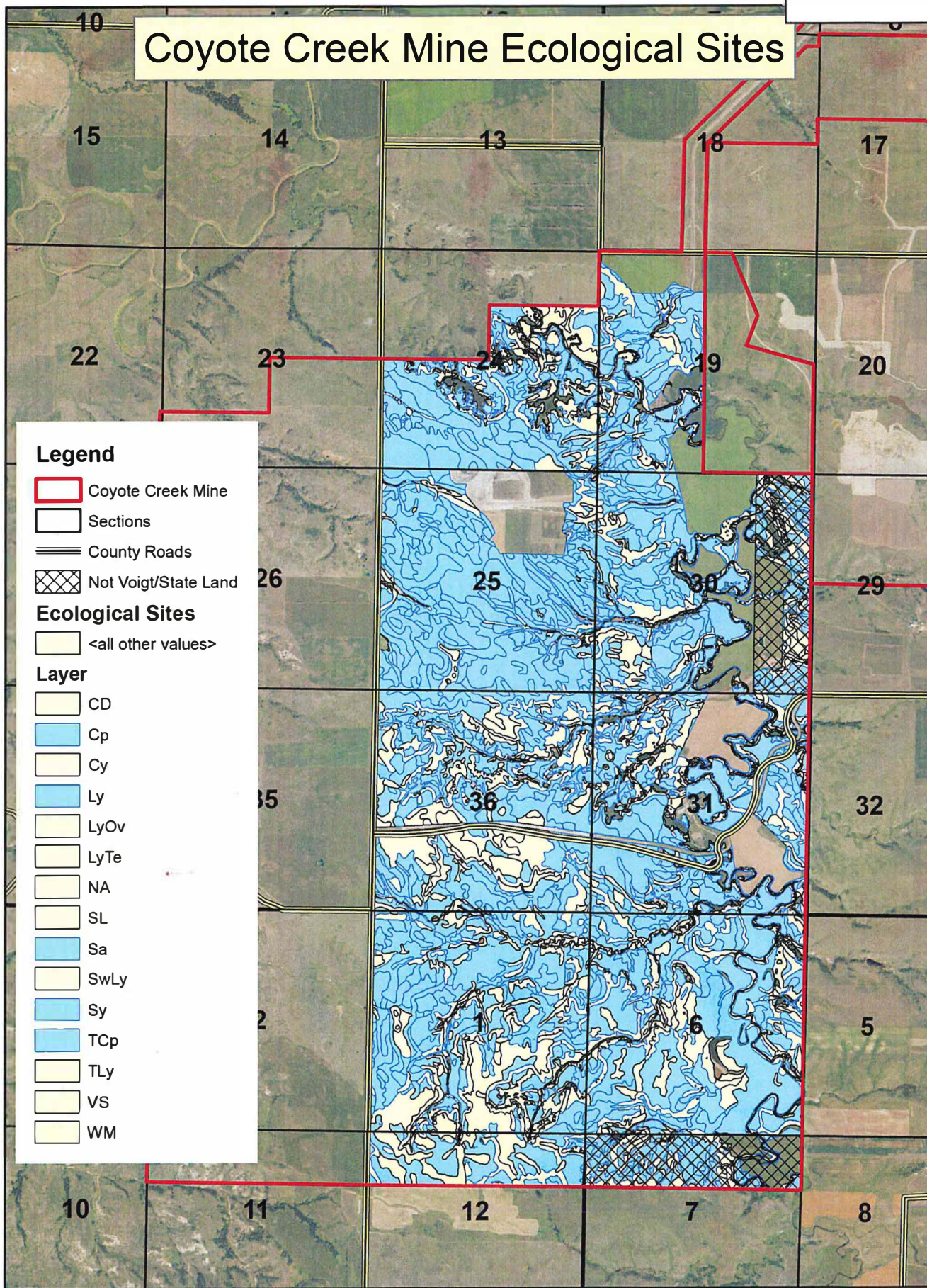
Rev 14 Reference Areas 67.6% of Voigt/State

Top three Eco Sites in each tract

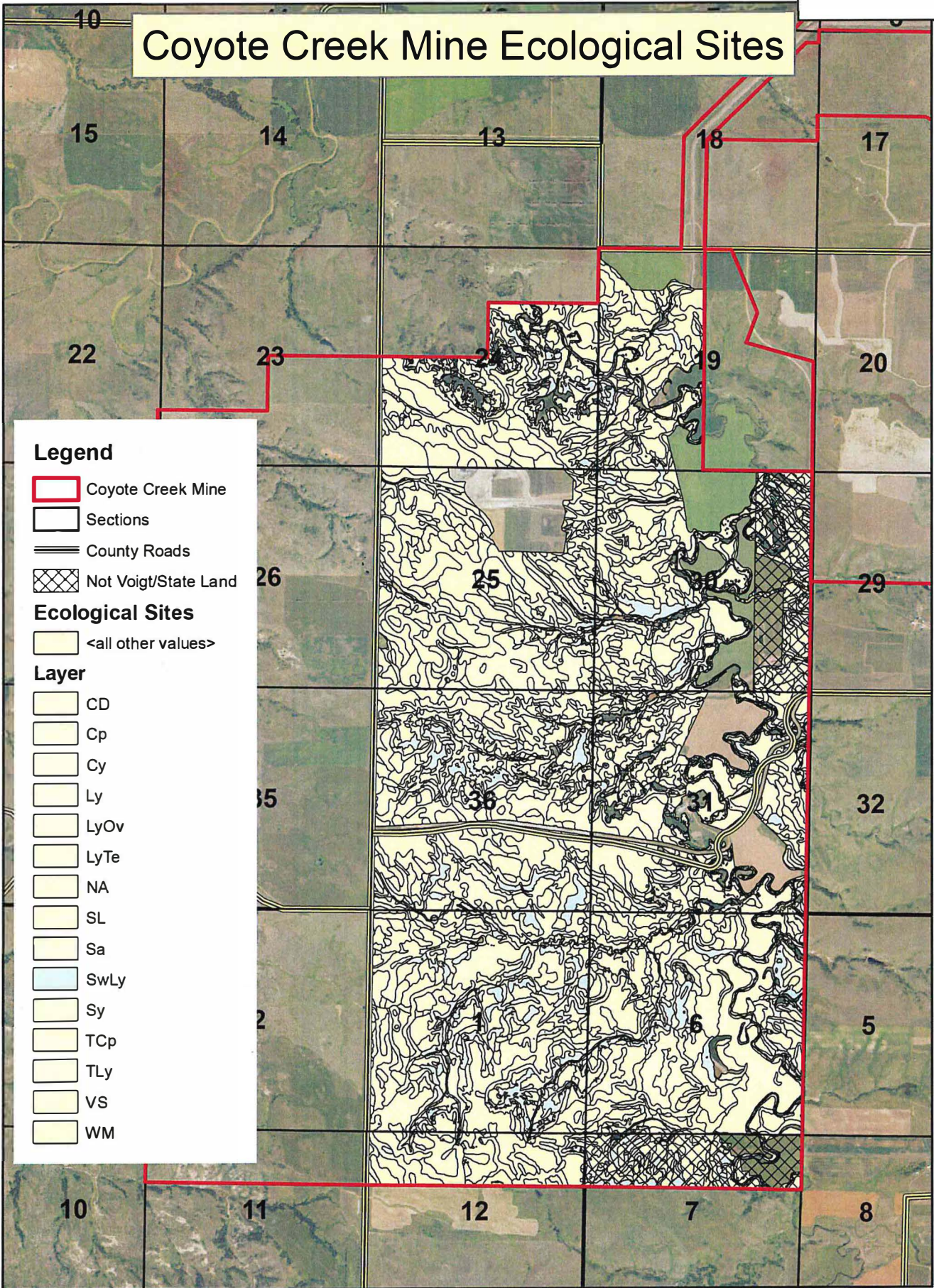
Note: Excluded Voigt E2E2 of Section 6, Voigt S2NE4 of Section 24 because no mining related disturbance is planned

Guy Welch - 23April2026

# Coyote Creek Mine Ecological Sites



# Coyote Creek Mine Ecological Sites



## Legend

- Coyote Creek Mine
- Sections
- County Roads
- Not Voigt/State Land

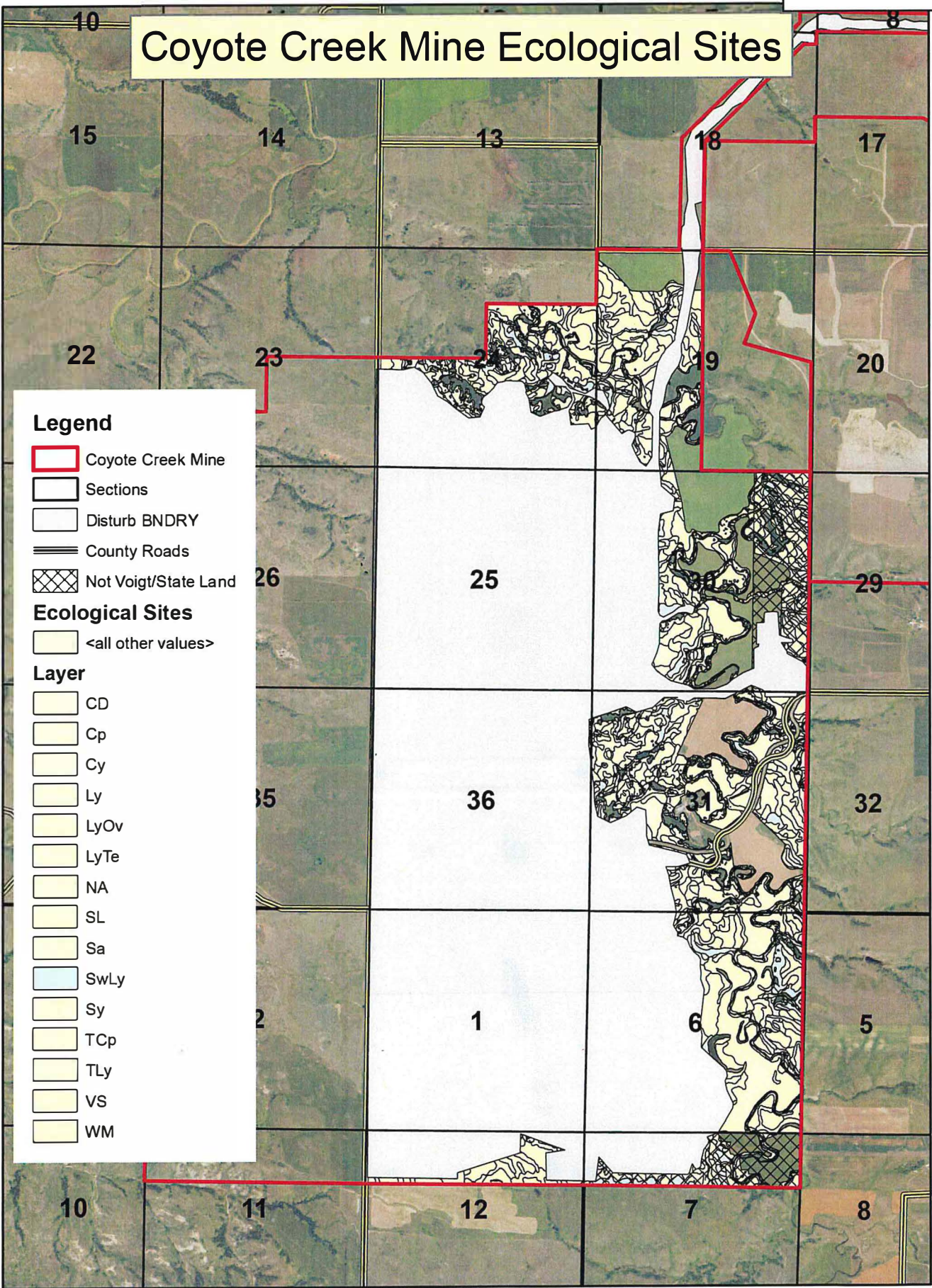
## Ecological Sites

<all other values>

## Layer

- CD
- Cp
- Cy
- Ly
- LyOv
- LyTe
- NA
- SL
- Sa
- SwLy
- Sy
- TCp
- TLy
- VS
- WM

# Coyote Creek Mine Ecological Sites



**Legend**

- Coyote Creek Mine
- Sections
- Disturb BNDRY
- County Roads
- Not Voigt/State Land

**Ecological Sites**

- <all other values>

**Layer**

- CD
- Cp
- Cy
- Ly
- LyOv
- LyTe
- NA
- SL
- Sa
- SwLy
- Sy
- TCp
- TLy
- VS
- WM