



A Subsidiary of MDU Resources Group, Inc.

400 North Fourth Street
Bismarck, ND 58501
701-222-7900
www.montana-dakota.com

December 23, 2025

Executive Secretary
North Dakota Public Service Commission
State Capitol Building
Bismarck, ND 58505-0480

**RE: Wildfire Mitigation Plan
Case No. PU-25-___**

Montana-Dakota Utilities Co. (Montana-Dakota or Company) herewith files an original and seven (7) copies of its Wildfire Mitigation Plan (WMP) in accordance with Senate Bill 2339. Effective April 25, 2025, this bill establishes limitations on strict liability standard for qualified utilities, criteria for WMPs, and reporting requirements, all with the objective of enhancing safety and accountability in wildfire management.

The WMP has been created to communicate an overview of the Company's efforts to target wildfire risk mitigation in its operations and electric systems. By isolating this risk into a separate plan, the Company will strategically review the contributing factors associated with the wildfire risk to help manage this threat to public safety, system resilience, and electric system reliability. This WMP will be a guide to current and future activities within the Company to continue the reduction in wildfire risk across the service territory. The WMP is included herein as Exhibit 1 and will be updated regularly as wildfire risk mitigation progresses, with a new or revised plan submitted every two years.

For any questions regarding this filing please contact me at (701) 954-9072 or tyler.culbertson@mdu.com.

Sincerely,

/s/ Tyler J Culbertson

Tyler J Culbertson
Director of Regulatory Affairs

Attachment

Exhibit 1



2025

Wildfire Mitigation Plan

Strategic Wildfire Prevention and Resilience

Table of Contents

Executive Summary.....	3
Company Profile.....	4
Risk Analysis	6
Inspection and Maintenance	10
Situational Awareness.....	13
Operations Activity.....	17
Risk Mitigation and Integrity.....	19
Wildfire Event Response	23
Restoration Procedure.....	24
Costs to Implement	25
External Engagement.....	27
Defined Terms	30

Executive Summary

Montana-Dakota Utilities Co. (Montana-Dakota) has more than a 100-year history of safe, reliable, and cost-effective electric service since its establishment in 1924. The Company has strived to perform as a prudent operator of the electric systems in its service territory by adapting to the changing operating environments and risks over that period of time.

This Wildfire Mitigation Plan (WMP) presents an overview of the Company's efforts to target wildfire risk reduction in its operations and electric systems. The Company has historically looked for ways to improve the performance, reliability, and safety of the systems and work practices. By isolating this risk into a separate plan, the Company will strategically review the contributing factors associated with wildfire risk to help manage this threat to public safety, system resilience, and electric system reliability. The WMP will be a guide for current and future plans within the Company to continue the reduction in wildfire risk across the service territory. The WMP will be updated as progress on wildfire risk mitigation continues.

Montana-Dakota is committed to the operational practices and capital investments currently in place and described in the 2025 WMP. These measures are designed to enhance public safety and reduce wildfire risk within our service territory. While the WMP identifies potential future improvements, our commitment centers on practices and investments active today.

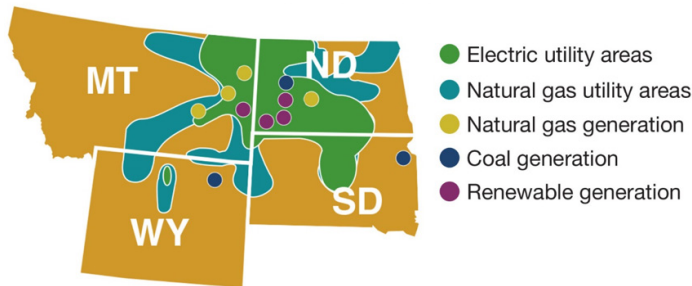


Company Profile

Service Area

Montana-Dakota is a subsidiary of MDU Resources Group, Inc., a diversified natural resources company based in Bismarck, ND. MDU Resources provides essential products and services through its regulated energy delivery businesses. The service area covers more than 168,000 square miles and serves nearly 431,000 customers in 271 communities.

Montana-Dakota Utilities



Montana-Dakota Utilities

Asset Overview

Montana-Dakota's electric system is built to deliver reliable power across its service area through an integrated network of 381 substations, 3,462.9 miles of transmission lines, and 4,881.6 miles of distribution lines. Transmission lines are responsible for carrying high-voltage electricity over long distances from power plants to substations. Substations step down high-voltage electricity from transmission lines to levels suitable for distribution lines to deliver electricity to homes and businesses. To strengthen wildfire mitigation, Montana-Dakota applies a four-tier risk framework—low, moderate, elevated, and extreme.

Asset Type	Total circuit-miles	Circuit-miles in increased risk	% of total miles
MONTANA			
Transmission (all overhead)	676.5	78.53	11.61%
Distribution	1339.8	178.37	13.31%
Distribution overhead	906.0	89.18	9.84%
Distribution underground	433.8	48.93	11.28%
NORTH DAKOTA			
Transmission	2043.8	172.25	8.43%
Transmission overhead	2042.6	86.13	4.22%
Transmission underground	1.2	0	0.00%
Distribution	2317.4	99.16	4.28%
Distribution overhead	1305.0	49.58	3.80%
Distribution underground	1012.4	61.91	6.11%
SOUTH DAKOTA			
Transmission (all overhead)	672.8	76.89	11.43%
Distribution	336.5	277.69	82.52%
Distribution overhead	267.7	138.85	51.87%
Distribution underground	68.8	9.42	13.69%
WYOMING			
Transmission (all overhead)	71.0	45.55	64.15%
Distribution	887.9	277.69	31.28%
Distribution overhead	325.7	138.85	42.63%
Distribution underground	562.2	328.48	58.43%
TOTAL			
Transmission	3464.1	574.19	16.58%
Transmission overhead	3462.9	287.09	8.29%
Transmission underground	1.2	0	0.00%
Distribution	4881.6	865.20	17.72%
Distribution overhead	2804.4	416.46	14.85%
Distribution underground	2077.2	448.74	21.60%

Table 1. Montana-Dakota power line assets by State

Objectives of a Wildfire Mitigation Plan

The primary objectives of this WMP are to identify and implement strategies to achieve the following:

1. Reduce Wildfire Risk

Minimize the risk of wildfires associated with Montana-Dakota's Transmission and Distribution (T&D) facilities and field operations to protect public safety and reduce risk to utility customers

2. Improve System Reliability and Resiliency

Increase the reliability of the overall T&D system and enhance the resiliency of Montana-Dakota's T&D system during wildfire events, regardless of the ignition source

3. Regulatory Compliance

Strive to comply with all wildfire mitigation requirements established by regulatory authorities



Montana-Dakota's approach to achieving these objectives includes the following actions:

Situational Awareness

Incorporate information regarding current and forecasted weather and field conditions into operational practices to reduce risk and increase public safety

Risk-Based Approach

Utilize a risk-based approach to quantify wildland fire risk by considering wildfire probability and consequences, identifying areas of elevated wildfire risk within Montana-Dakota's service area

Targeted Practices

Implement focused operations, maintenance, and capital improvement strategies, including vegetation management, system design enhancements, infrastructure hardening or replacement, and field personnel protocols to reduce wildfire risk

Engagement and Collaboration

Engage with government and industry entities, emergency responders, the public, and electric utility peers to promote a common understanding and alignment of wildfire mitigation plans

Performance Evaluation

Evaluate the performance and effectiveness of the strategies identified in this WMP through metrics and monitoring to support continuous improvement and adaptation

By focusing on these objectives and actions, Montana-Dakota seeks to increase protection of its infrastructure, customers, and the broader community from the impact of wildfires.

Risk Analysis

General Elements of Wildfire Risk

Montana-Dakota evaluates wildfire risk using a structured framework that draws on available data and established methodologies. This approach identifies the factors contributing to wildfire threats within the Company's service territory and supports the prioritization of mitigation strategies. By systematically assessing wildfire risk, Montana-Dakota aims to address areas of greatest concern while maintaining reliability and safety for customers and infrastructure. The following elements form the basis of the company's risk analysis and guide decision-making throughout the wildfire mitigation planning process.

Likelihood

Likelihood assesses the annual probability of a wildfire burning in a specific location. This evaluation is based on fire behavior modeling and historical data, helping us identify areas with higher chances of wildfires.

Intensity

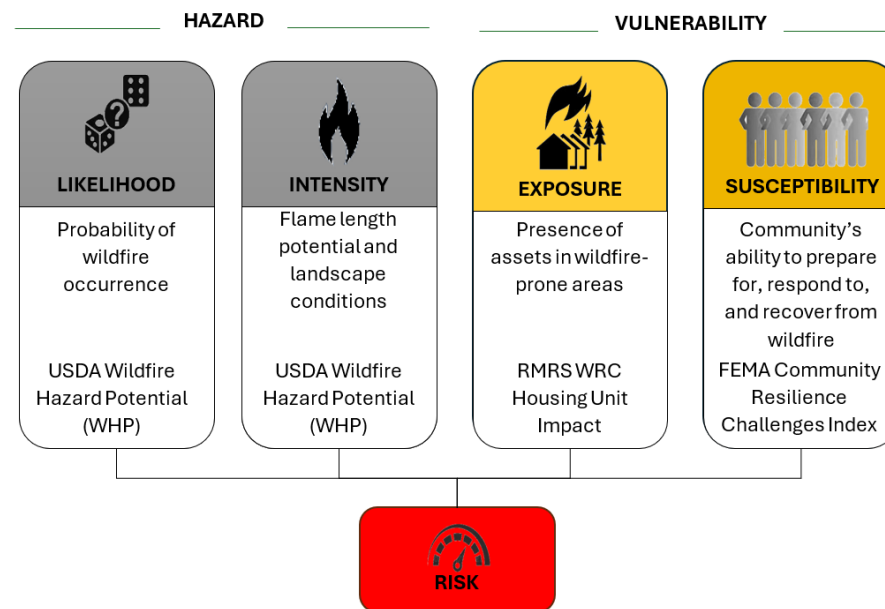
Intensity measures the energy expected from a wildfire, influenced by factors such as topography and vegetative fuel. This is expressed in terms of potential flame length and highlights regions where fires may be more difficult to manage.

Exposure

Exposure examines the spatial coincidence of wildfire likelihood and potential intensity in relation to community attributes. This helps identify areas where people and property are most at risk, allowing us to prioritize the Company's mitigation efforts.

Susceptibility

Susceptibility considers the potential of homes and communities to be damaged if a wildfire occurs. This includes local conditions like construction materials and vegetation, guiding the Company's efforts in vegetation management and other mitigation strategies to reduce overall risk.



Established Activities

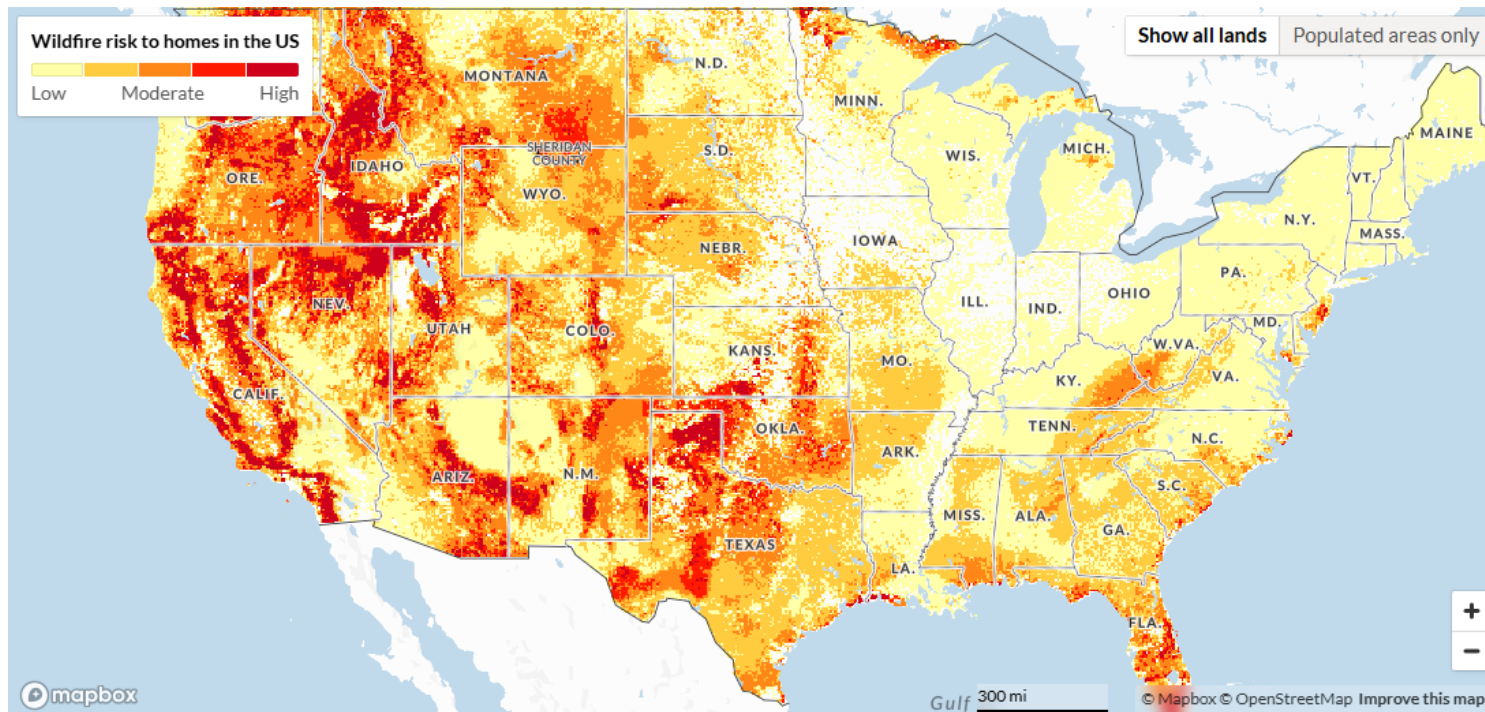
Wildfire Risk Model Development

Montana-Dakota has developed a GIS-based representation of relative wildfire risk across its electric service territory. Montana-Dakota's wildfire risk model provides a structured, data-driven approach to identify areas of elevated wildfire consequence risk and prioritize mitigation actions. This methodology supports compliance with regulatory expectations, enhances community safety, and strives to provide efficient allocation of resources across the Company's service territory.

Wildfire risk is influenced by multiple factors, including vegetation, climate, housing density, and community resilience. Montana-Dakota developed a GIS-based Wildfire Consequence Risk Model to integrate these factors into a single, actionable score. This model enables:

- **Spatial prioritization** of mitigation efforts such as grid hardening, vegetation management, and enhanced inspections.
- **Alignment with national standards** by calibrating risk tiers to U.S. Forest Service datasets.
- **Annual tracking of progress** through baseline and updated system risk scores.

This risk model helps prioritize various wildfire mitigation efforts, including grid hardening programs, increased system inspections, and enhanced maintenance and vegetation management. By identifying areas at higher risk, Montana-Dakota can effectively allocate resources and implement strategies to enhance community resilience and safety.



Data Sources

To create a geographical representation, Montana-Dakota utilizes a combination of data from the U.S. Department of Agriculture’s Wildfire Hazard Potential (WHP)¹ map and Housing Unit Impact (HUI)² dataset, overlaid with the FEMA Community Resilience Challenges Index (CRCI)³.

Wildfire Hazard Potential

The WHP dataset is designed to aid in the assessment of where wildfires are most likely to occur and how difficult a wildfire may be to contain across large landscapes. The WHP has been developed using data from the Large Fire Simulation system (FSim), LANDFIRE vegetation and fuels data, and historical fire occurrence records. The WHP map provides a nationwide index of wildfire potential. It is presented both as continuous values and in five categorical classes—very low to very high. While not a forecast or real-time risk map, WHP supports long-term strategic planning by identifying areas where wildfires could pose significant challenges to suppression efforts. When combined with data on critical infrastructure or valued assets, it can help approximate relative wildfire risk and guide vegetation management priorities.

Housing Unit Impact

The HUI dataset is a high-resolution geospatial product developed to support wildfire risk assessment and mitigation planning in residential areas across the United States. HUI estimates the relative potential impact of wildfire on housing units at specific locations. This dataset integrates modeled fire behavior metrics, particularly flame length probabilities, to evaluate the likely severity of wildfire effects on homes. While HUI does not predict the occurrence or timing of wildfires, it offers a strategic, long-term perspective on housing vulnerability. By identifying areas where residential structures face the greatest potential for wildfire damage, HUI serves as a critical tool in prioritizing mitigation efforts.

FEMA Community Resilience Challenges Index

The CRCI is a composite measure developed by FEMA and Argonne National Laboratory to quantify the challenges communities face in building resilience. In the context of wildfire risk, CRCI helps quantify the susceptibility of communities by identifying social and infrastructural vulnerabilities that may hinder their ability to prepare for, respond to, and recover from wildfire events. For example, communities with low income, limited access to healthcare, or aging infrastructure may struggle more during evacuations or recovery. CRCI highlights these areas, enabling prioritization of mitigation efforts. Combining CRCI with hazard exposure data allows for a better assessment of wildfire risk and resource allocation.

Normalization and Weighting

Raw data from each dataset is normalized using Z-scores to allow comparability. Weighted factors are applied to reflect relative influence:

$$\text{Wildfire Consequence Risk (WCR)} = (0.80 \times \text{WHP}) + (0.10 \times \text{HUI}) + (0.10 \times \text{CRCI})$$

This weighting makes WHP the dominant driver while incorporating housing and community resilience influences without skewing results.

¹ Dillon, G., Menakis, J., & Fay, F. (2015). *Wildland fire potential: A tool for assessing wildfire risk and fuels management needs*.

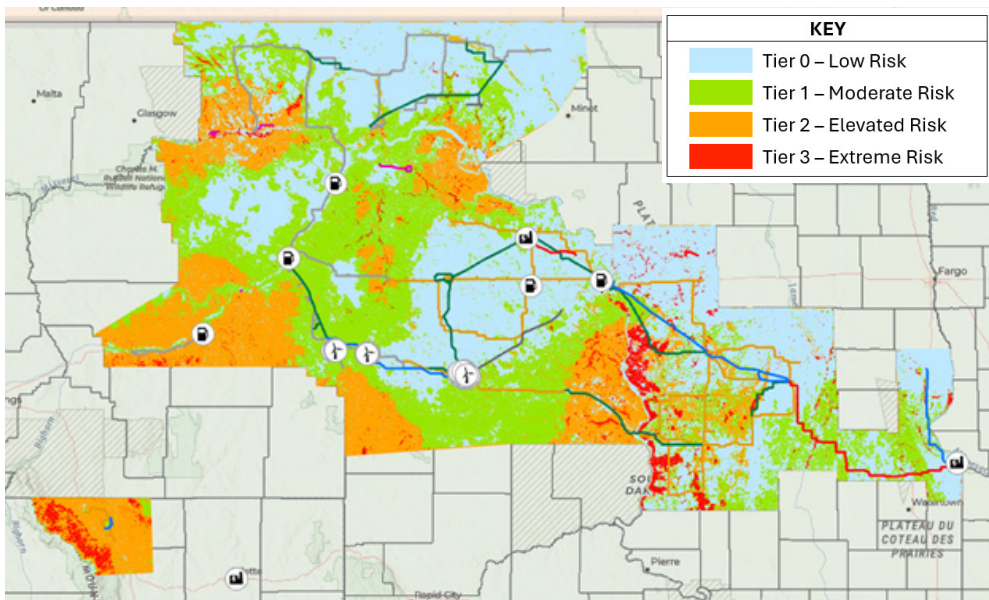
² U.S. Department of Agriculture. (n.d.). *Wildfire Risk to Communities: Housing Unit Impact*. https://apps.fs.usda.gov/fsgisx01/rest/services/RDW_Wildfire/RMRS_WRC_HousingUnitImpact/ImageServe/info/iteminfo

³ Federal Emergency Management Agency (FEMA), & Argonne National Laboratory. (2024). *Community Resilience Challenges Index methodology for identifying commonly used indicators from peer-reviewed research*. https://www.fema.gov/sites/default/files/documents/fema_2023-community-resilience-challenges-index_methodology-report.pdf

Risk Scoring

Montana-Dakota’s wildfire risk scoring framework provides a structured, data-driven approach to identify areas of elevated wildfire consequence risk and prioritize mitigation actions. This methodology supports compliance with regulatory expectations, enhances community safety, and promotes efficient allocation of resources across the Company’s service territory.

The Wildfire Consequence Risk (WCR) is shown here in GIS view:



Calibration

Montana-Dakota has calibrated its wildfire risk assessment model and implemented a four-tier classification framework. This framework is aligned with the five categorical classes of the U.S. Forest Service’s WHP dataset, so that Tier 2 and Tier 3 designations correspond to nationally recognized elevated risk categories.

Circuit Risk Scoring and Plan Baseline

The Company has developed additional risk scoring to prioritize electric system risk reduction projects. Central to this process is the WCR score, which measures potential wildfire impact. For each electric circuit, a circuit average WCR was calculated by averaging the WCR score per mile of overhead distribution line section within that circuit.

$$\text{Circuit Avg WCR} = (\text{Total WCR for OH Line Sections}) / (\text{Circuit Miles})$$

The Circuit Average WCR score will be used to prioritize the order of circuit assessment and mitigation projects within areas of the Company’s service territory.

A baseline WCR score is developed by utilizing the Circuit Average WCR score associated to each separate circuit on the system. WCR can be determined by the formula:

$$\text{WCR} = \text{Circuit Avg WCR} \times \text{OH Circuit Miles}$$

The total System Wildfire Risk (SWR) score is calculated from the WCR scoring. The SWR represents the sum of WCR scores across the system:

$$\text{SWR} = \sum \text{WCR for all Circuits}$$

The SWR score will serve as the baseline for assessing overall wildfire risk across the Company’s electric system and will be reported as the initial risk assessment score.

State	Weighted Average Risk per OH Mile (2025 Baseline)	OH Miles Distribution*
MONTANA	4.3	764.1
NORTH DAKOTA	2.6	1265.8
SOUTH DAKOTA	5	229.8
WYOMING	7.6	252.0

Inspection and Maintenance

Montana-Dakota has historically developed and performed a variety of system inspections and maintenance activities across its transmission and distribution systems. These enhancements and activities are intended to address reliability, safety, and compliance of the T&D system. The wildfire risk, as specifically identified in this WMP, has always been a part of risk reduction through these activities performed and implemented on the Company's electric infrastructure. The programs and activities listed here are formalized processes that take place on the Montana-Dakota systems and are monitored for improvements through operational experience, compliance changes, and industry collaboration education. The following programs are a representation of activities that are performed towards improvement of the electric system.

Established Inspections and Maintenance Operations Activities

Montana-Dakota employs a comprehensive approach to inspect and operate its electric facilities, promoting safety and reliability. These initiatives include regular inspections of substations and field equipment, scheduled maintenance of critical components, systematic patrols of rural distribution lines, and the development of programs to mitigate risks at customer service locations.



Line Patrols and Equipment Inspections

Overhead rural distribution lines are patrolled on a five-year rotation, with additional unscheduled patrols conducted after outages or severe weather events to promptly address any emerging issues. Underground distribution equipment, including riser pole structures, is inspected every seven years to identify hazards and maintenance needs.

Transmission line patrols are performed annually across the entire electric transmission system. These scheduled inspections are supplemented by ad hoc patrols following outage events or large weather events to identify any hazards or maintenance issues. Inspection frequency for all assets is further adjusted based on their condition, performance history, and environmental factors, with proactive maintenance prioritized according to risk, outage history, and safety concerns.

Substations, both distribution and transmission, are inspected monthly, covering critical equipment and general facilities at each location. Critical protection equipment such as reclosers, as well as transmission line equipment like motor-operated switches located outside substations, are also inspected on a monthly schedule. Capacitor banks receive preventative maintenance every three years, while switchgear is maintained on a five-year cycle.

Montana-Dakota follows a 12-year inspection and maintenance cycle for ground line poles, a standard informed by pole inspection history and the location of poles within American Wood Protection Association (AWPA) deterioration zones. This cycle helps identify and address potential strength issues with pole structures. Additionally, the Company inspects electric service points located at customer premises on a seven year rotation to identify conditions such as abrasion on service lines, clearances from structures and vegetation, mast damage, environmental exposure, and signs of stress on meter sockets.

GIS Field Map Capabilities

Montana-Dakota has equipped field personnel with GPS-enabled devices that allow for real-time logging of hazardous trees. The inspection data directly feeds directly into GIS layers. This integration supports rapid identification and prioritization of mitigation actions.

Light Detection and Ranging (Lidar)

Lidar technology is utilized to assess tree height and proximity to power lines, providing critical data for evaluating outage and wildfire risks and informing vegetation management and infrastructure upgrade decisions.

Plan Enhancements

Maximo

Montana-Dakota is in the process of implementing a robust enterprise asset management platform, called Maximo, to enhance the efficiency and reliability of our field operations, with the planned go-live scheduled for 2026. Maximo seeks to enable streamlined workflows for service requests, asset tracking, and work order management. By integrating with GIS tools, accurate location data for assets and incidents is provided, enabling precise resource deployment. The system improves crew and equipment utilization, facilitates real-time communication between field and office teams, and scales across departments to support evolving mitigation needs. Additionally, Maximo's analytics capabilities provide actionable insights through dashboards and performance metrics, enabling data-driven decision-making to reduce wildfire risk and improve operational resilience.

Annual Distribution Line Patrols

Beginning in 2026, the Company will be adding annual overhead distribution line patrols within the Tier 2 and Tier 3 high wildfire risk areas of the Company's service territories.

Vegetation Management

Montana-Dakota is committed to reducing wildfire risk and enhancing electric system reliability through its vegetation management program. This program covers both transmission and distribution systems, using a blend of proactive inspections, scheduled maintenance, and rapid response to emerging threats. The Company has established Tree Trimming Guidelines and a Vegetation Management and Transmission Inspection Plan to provide instructions for maintaining safe and reliable power lines by managing vegetation around its facilities. The program is inclusive of all overhead power lines, both distribution and transmission, from 120V to 345kV. It is guided by industry standards, including ANSI A300-2023 Tree Care Standards (revision, redesignation, and consolidation of ANSI A300 Parts 1 through 10) and/or NERC FAC-003-4, and incorporates a mix of proactive and condition-based strategies.



General Guidelines

Qualified Personnel

Only qualified line-clearance tree trimmers who meet the qualifications of “line clearance tree trimmer and/or trimmer trainee” as defined by Occupational Safety and Health Administration (OSHA) 1910.269, ANSI Z133.1 and any other applicable federal, state or local laws, codes, or regulations, are permitted to perform tree trimming near power lines.

Pruning Cycle

Montana-Dakota uses a scheduled pruning cycle for distribution lines, typically varying from three to five years for distribution lines, to maintain safe clearances from power lines. Enhanced vegetation management practices, including increased frequency of inspections and trimming around power lines, are considered in areas with higher fire potential.

Pruning Practices

Tree pruning involves the selective removal of branches to maintain adequate clearance from power lines while preserving the tree’s natural appearance. Factors such as tree growth rate, wood strength, and voltage of the power line are considered.

Tree Removal

Trees that pose a hazard to power lines or require repeated severe pruning may be removed. Additionally, trees located off the right of way with a high probability of failure and sufficient height to contact conductors or structures are classified as danger trees and are considered for clearing. Stumps are treated with herbicide to prevent re-sprouting.

Customer Interaction

Scheduled Pruning/Removal

Montana-Dakota attempts to notify homeowners before pruning or removing trees, including knocking on the door or leaving written notice if the homeowner is unavailable. If contact cannot be made, the necessary work will proceed.

Customer-Requested Pruning/Removal

Customers can request Montana-Dakota prune or remove trees that pose a hazard to power lines. Montana-Dakota will assess the situation and schedule the work, if needed.

Storm Work

During storms, Montana-Dakota will prune or remove trees that contact power lines during restoration efforts. In emergency situations, trees may be removed or pruned without notifying the property owner.

Situational Awareness

Situational awareness, as it applies to an electric system for wildfire risk mitigation, is simply understanding real-time environmental observations, forecasts, historical events, and actual events happening in proximity to the electric T&D system. Then, using this information to support operational decisions to enhance public safety and reduce wildfire risks. Montana-Dakota uses information from several sources as input for situational awareness operating decisions and real-time system changes. Historically, the Company has performed situational awareness planning in many other areas of operations such as storm outage response. The WMP documents the situational awareness developments at the Company specifically targeted towards reducing the risk of wildfires.



Established Activities

In 2024, Montana-Dakota developed a Wildfire Resiliency Plan that includes the use of a Dispatcher Operating Guide that processes a Daily Wildfire Assessment Process to evaluate wildfire risks and provide guidance to the organization.

In conjunction with its Wildfire Resiliency Plan, Montana-Dakota developed policies and procedures specific to its electric system operations, including:

- High wildfire risk preventative measures
- Breaker lockouts on critical lines during high fire danger conditions
- Distribution switchgear inspection program
- Electric primary switching procedure

Montana-Dakota has also implemented a distribution Outage Management System (OMS) software solution, and a Transmission Energy Management (EMS) system designed to detect, manage, and resolve power outages efficiently. It integrates real-time data from various sources to help Montana-Dakota quickly identify outage locations, assess the extent of the impact, and coordinate restoration efforts. Additionally, Montana-Dakota is making investments to expand its Supervisory Control and Data Acquisition (SCADA) systems.

High Wildfire Preventive Measure Policy

Montana-Dakota has deployed a High Wildfire Preventive Measures Policy to implement risk-driven operational constraints to help mitigate wildfire risks. These constraints and measures are based on comprehensive wildfire risk assessments and are designed to minimize the potential for ignitions during high wildfire-risk periods. Key components include:

Daily Wildfire Risk Assessments

During the wildfire season, Montana-Dakota uses the “Wildland Fire Assessment System” and “NOAA Weather Outlook” to determine the degree of wildfire threats by region in its service territory each day. This information is then broadcasted to all electric employees current and next-day conditions to allow for the implementation of stricter controls to mitigate ignition risks when fire danger is high in any part of its service territory.

Work Restrictions

Based on the daily wildfire risk assessment, certain precautions may be implemented. These may include restricting work in high fire danger rights-of-way, limiting vehicle access to off-road areas, requiring additional fire equipment, and delaying work if wildfire risk conditions are present in the area.

Contractor Compliance

Daily wildfire risk assessments and restrictions are relayed to contractors working in fire danger areas by the project managers.

Transmission Breaker Lockouts On Critical Lines In High Fire Danger Conditions

The Electric System Operators follow additional re-energization rules for days when the Daily Wildfire Risk Assessment determination is high risk. Key elements of the policy include:

Situational Awareness

From the Daily Wildfire Risk Assessment determination, steps are to be taken for transmission breaker lock-out conditions for specific critical transmission lines.

Re-energizing an Outage On a Transmission Line

When Daily Wildfire Risk Assessment indicates a very high wildfire risk, severe wildfire risk, or red flag warning, critical transmission lines at voltages less than 100KV, we will follow specific re-energization rules to help prevent wildfire ignition risks.

- Patrol Lines before placing any transmission line back into service
- Communicate work with other companies, customers, and Company employees about the procedures and precautions involved in returning transmission lines to service to reduce risk

Near Real-Time Satellite Data

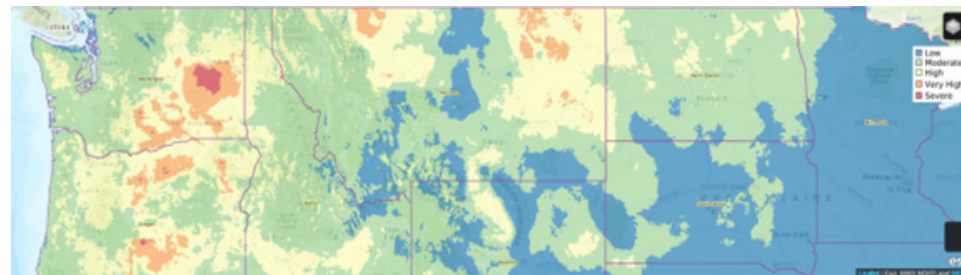
In the event there is a fire in Montana-Dakota’s service territory, wildfire data will be updated every five minutes and integrated into Montana-Dakota’s GIS platforms. This enables dispatch and operations teams to monitor fire proximity to electric infrastructure and make timely decisions, including line de-energization. When there is evidence a wildfire is approaching electric infrastructure, line de-energization may be initiated as a protective measure.

Mobile Data Collection

GIS tools enhance communication between field and office teams by enabling rapid identification of problem locations, the attachment of inspection images, and coordination of response efforts during wildfire events.

Fault Detection

A number of the Company’s circuits have relays installed. These are pieces of hardware that can be used to identify and isolate faults. This enables more targeted patrols and reduces outage duration.



Wildfire Assessment Map



Red Flag Warning Map

Distribution Enhanced Power line Safety Settings Program

Montana-Dakota is in the early stages of developing an EPSS Program to help mitigate wildfire risks associated with potential fire ignition from its overhead distribution system. This program is intended to improve public safety by allowing power line distribution protective equipment to automatically turn off power during a system fault condition, without a reclose operation, when wildfire hazard levels are elevated as determined by situational awareness criteria. Elements of this program include:

Distribution EPSS Circuit Selection

As part of EPSS development, the Company will conduct engineering reviews to evaluate which distribution circuits are suitable for EPSS deployment. Circuit selection will be based on wildfire risk assessments and technical feasibility. Before any EPSS settings can be enacted, each candidate circuit must be carefully analyzed to determine the necessary modifications and upgrades.

Deployment of EPSS on a Circuit

Once a circuit is selected for EPSS implementation, additional engineering work will be required to prepare it for deployment. This process may involve installing new protective devices, updating communication systems, and revising operational protocols, as well as adding device controls, SCADA equipment, sectionalizing switches, fault indicators, and fusing as needed. Both capital and operational expenses are anticipated, and modifications will be scheduled according to risk prioritization and available resources. The deployment of EPSS across the distribution system will be a multi-year effort, with Montana-Dakota continuing to refine its approach as the program progresses, adapting to lessons learned and evolving industry standards.

Daily Wildfire Risk Assessment

The Daily Wildfire Risk Assessment will be used to determine when and where EPSS settings are to be applied. Changes to distribution equipment settings will be made remotely with the distribution operation group using SCADA communications.



Restoration Response

Montana-Dakota does not currently have EPSS enabled; however, as the EPSS program is developed and implemented in the future, additional formal restoration requirements will be established to support wildfire risk reduction during power restoration. When circuits are placed into EPSS, the protocol will require that the entire mainline portion of the circuit be patrolled before re-energizing after an outage.

EPSS Reliability Effects

EPSS negatively impacts system reliability by causing extended outages on distribution circuits. Faults that might have cleared with momentary outages now require longer restoration times due to additional line patrols and verification before re-energizing. The Company uses the OMS system to track these reliability impacts from the EPSS program.

Public Safety Power Shutoff (PSPS)

Montana-Dakota is actively exploring the potential role of a PSPS program as part of its broader wildfire mitigation strategy. A PSPS program is designed to enhance community safety by temporarily turning off power in areas facing elevated wildfire risk due to extreme weather conditions. While the concept is under consideration, Montana-Dakota has not yet implemented a PSPS program.

As part of this evaluation, Montana-Dakota is considering a range of factors that typically inform PSPS programs, such as:

Assessing wildfire risk: This involves ongoing review of weather patterns, vegetation conditions, and other relevant factors to help determine when proactive measures may be necessary.

Customer and community engagement: Montana-Dakota recognizes the importance of clear and timely communication with customers and stakeholders regarding potential power shutoffs.

Collaboration with emergency services: The Company is committed to working closely with local emergency management and public safety agencies to coordinate response efforts.

Balancing reliability and safety: Montana-Dakota is mindful of the need to balance wildfire risk reduction with the importance of maintaining reliable electric service for its customers.

Addressing operational and regulatory considerations: The evaluation includes reviewing accessibility of power lines, notification procedures, coordination with other utilities, and anticipated impacts on public safety.

Montana-Dakota will continue to assess the need for a PSPS program, guided by industry best practices, regulatory requirements, and the evolving needs of the communities it serves.



Operations Activity

Montana-Dakota's wildfire mitigation strategy is anchored in a robust set of operational activities. These established activities include monitoring of the T&D systems through SCADA operations, supported by ESO and DSO working around the clock. The OMS enhances situational awareness by tracking emergency and planned outages with detailed cause data, including fire-related incidents. Operational protocols emphasize employee training, incident reporting, and contractor coordination to forward safe practices in high fire risk areas. Over the past five years, Montana-Dakota has evolved its reliability-focused practices into a coordinated approach to wildfire risk mitigation.

Established Activities

System Monitoring

Transmission System Monitoring

Montana-Dakota provides 24/7/365 monitoring of its transmission systems. ESO work in shifts and are dedicated to the monitoring, operating, and management of the transmission system.

Distribution SCADA Operations

Montana-Dakota provides monitoring of its distribution systems through SCADA technology, which has been deployed across approximately 90% of the network. DSO work in shifts and are dedicated to the monitoring, operating, and management of the distribution system. The DSO also monitor and manage the OMS to provide accurate information vital to reliability, safety, and wildfire risk decisions.

Fire Incident Tracking

Through the OMS system, any emergency issue related to a system event including fires, is tracked and additional information is gathered to have detailed information of cause and consequence.

Operations Protocols and Workforce Practices

Montana-Dakota places a strong emphasis on employee training and safety protocols. Key components of the Company's training and safety protocols include:

- **Safety Protocols:** Employees are trained on specific safety protocols to follow during high fire risk conditions. This includes the proper use of firefighting tools such as extinguishers, shovels, and sand, as well as guidelines for off-road vehicle travel during severe fire danger.
- **Incident Reporting and Review:** Montana-Dakota has established procedures for reporting and reviewing incidents related to wildfire risks. This includes post-incident reviews to identify improvement opportunities and help incorporate lessons learned into future training and protocols.

Coordination with Contractors

Contractors operating in high fire risk areas are to receive training on wildfire mitigation protocols. These trainings may include instruction on pre-watering vegetation to reduce flammability, maintaining access to water sources for rapid suppression, adhering to restricted travel guidelines during elevated fire conditions, and following safe mowing practices to minimize ignition risks.

Historical Strategy Changes

Over the past five years, Montana-Dakota has evolved its approach to wildfire mitigation. Traditionally, many of the operational practices now recognized as wildfire mitigation strategies, such as vegetation management, infrastructure inspection, and system hardening, were primarily implemented to promote reliability. These activities focused on reducing outages, improving system performance, and maintaining safe, continuous service for customers.

As wildfire risk has increased across the region, driven by changing climate conditions and expanding wildland-urban interface areas, Montana-Dakota has shifted its perspective. The company now recognizes that these reliability practices also play a critical role in wildfire prevention and mitigation. This realization has led to a more intentional, coordinated approach to wildfire risk reduction.

A major milestone in this strategic shift was the development and implementation of the Wildfire Resiliency Plan in June 2024. This plan establishes a comprehensive framework for protecting employees, contractors, the public, emergency responders, property, and company assets from wildfire threats.



Key elements of this evolution include:

- **Development of the Wildfire Resiliency Plan:** The plan provides a single point of reference for policies, procedures, and standards related to wildfire prevention, protection, and mitigation. It outlines clear responsibilities for field personnel, supervisors, and leadership during wildfire season, including daily fire assessments, operational restrictions based on fire danger ratings, and emergency response protocols.
- **Enhanced Training and Awareness:** Annual training is now provided to managers, supervisors, and field personnel on wildfire danger conditions and appropriate response actions. Communication protocols have been strengthened, with regular updates and reminders sent to all relevant employees before and during wildfire season.
- **Emergency Response Coordination:** The plan details procedures for responding to wildfires, prioritizing preservation of life, property protection, and environmental stewardship. It also establishes clear lines of communication and coordination with emergency responders and internal teams.
- **Integration with Industry Standards and Regulatory Guidance:** The Wildfire Resiliency Plan references best practices and guidance from national organizations, such as the National Wildfire Coordinating Group and the North American Electric Reliability Corporation, ensuring alignment with industry standards.

This strategic shift demonstrates Montana-Dakota's commitment to proactively addressing wildfire risk, moving beyond traditional reliability measures to a holistic, risk-based approach that protects people, property, and service continuity.

Risk Mitigation and Integrity

Throughout its history, Montana-Dakota has a record of developing projects and programs aimed at improving system integrity and reliability through system upgrades and the replacement of aging assets. The goals of these projects have always been to provide safe, reliable, affordable, and environmentally responsible energy service to our customers. New, asset-based projects dedicated to wildfire risk reduction will help Montana-Dakota accomplish these goals. The WMP provides for a new look at prioritization of these projects.

Historical and Current Integrity Activities

Montana-Dakota has worked to improve public safety, worker safety, and system reliability of the electric transmission and distribution systems. Past integrity programs and efforts, in general, have continued to lower the risk of wildfire ignited by electric system assets. Some of the efforts from the past include:

General Rebuild of Aged Assets

Montana-Dakota consistently maintains an annual capital budget dedicated to the reconstruction of portions of the electric distribution, transmission, and substation assets. A percentage of assets are regularly planned for reconstruction. Repairs and replacements may be prioritized by safety, age, reliability, system required improvements, or general relocation requirements. Wildfire safety will become a general part of the decision-making process for prioritization of future projects.

Vintage Equipment Replacements

Montana-Dakota monitors equipment, assets, and materials within its electric T&D systems. Mechanical equipment and materials used in electric transmission and distribution systems are subject to failure. The Company uses safety history, reliability experience, peer utility experience, manufacturer input, and cost to make determinations as to replacement plans for failing vintage equipment or materials. The Company has taken two paths for remediation for these known issues over the years:

Full Replacement Programs

When the nature of equipment failure includes unacceptable risks, especially safety to workers or the public, the Company has had systematic programs in the past to eliminate targeted equipment assets or materials entirely from the distribution or transmission system. Example:

- **Distribution Underground Vintage Cable Replacements** – The Company plans to remove all primary voltage distribution cables on its system with a vintage prior to 1985. These aged cables have a tendency towards reliability failures and safety issues related to bare concentric cables. This is the driver for this program. The Company has been working on this for several decades to mitigate the reliability, safety, and cost concerns.

Directed Replacement Programs

When it is determined that the nature of equipment, assets, or materials has a poor operating record and should be removed from service due to known factors other than extreme safety concerns, the Company has set up operating directives to remove these reliability risk items over time. Directed replacement programs can turn into full replacement programs due to changing factors. Examples:

- **Distribution Live Front Equipment** – When live front equipment is removed from service, it is generally not reintroduced into operation. Projects involving existing live front equipment should consider opportunities to transition away from this design wherever practical.
- **Distribution Obsolete Material Replacement** – When structures or substation are worked on or removed from service, aluminum bell insulators, porcelain cutouts, porcelain arresters, and wildlife coverup will be installed.
- **Material Replacement for Porcelain** – The Company now uses polymer materials for insulation on new installations. Existing porcelain insulators are replaced opportunistically during scheduled work and maintenance.

Historical and Current Integrity Activities (cont.)

Wildlife Insulated Coverup

Montana-Dakota has been installing or retrofitting areas of its EDS for several decades with various forms of wildlife coverup. Most of the early installations were small, isolated areas based on known wildlife reliability issues. In 2012, the Company changed its Electric Distribution Standards to include full coverup on new installations to include:

- Insulated covered jumpers
- Insulated cutout covers
- Wildlife coverup on all equipment devices and bushings
- Phase coverup on conductor phases that do not meet avian safety clearances at the structure

The Company will evaluate the need for wildlife coverup as part of its wildfire mitigation strategy when assessing overhead rural distribution lines. The inclusion of animal coverup will be considered during the planning and design phase for circuit upgrades or rebuilds, with decisions based on the specific risks and requirements identified during each assessment.



Avian Safety Compliance

Montana-Dakota adapted its construction and maintenance standards to an overall Avian Protection Plan in 2012. Electric Distribution and Construction Standards were modified to provide for avian safe structures to help prevent avian electrocution on its facilities. Lowering this interaction risk with power lines also lowers the risk associated with the ignition of wildfire from system assets. Key system integrity changes for avian safety include:

- **New Construction Projects** – New construction projects for rural distribution or transmission lines are constructed to new avian safety standards. This provides for clearance and coverup of associated equipment to meet avian safe recommended practices.
- **Eagle Risk Model** - Montana-Dakota is working with an environmental consultant to develop an eagle risk model that will help prioritize mitigation measures in high eagle-use areas near electric facilities. This model will also inform wildfire mitigation decisions, supporting risk reduction for both wildfire and avian protection across the system.

Arc Flash Safety Compliance

Montana-Dakota introduced Arc Flash Safety Rules in 2009 to meet new requirements within the National Electric Safety Code (NESC) for the protection of electrical workers. The Arc Flash Safety Rules required all reclosers within the Company to have an ability to be placed on non-recloser for crews when performing hot line work on the distribution system. The Company replaced all distribution reclosers that did not meet compliance with new reclosers and control equipment.

Wildfire Integrity and System Hardening Activities

Montana-Dakota has developed targeted actions to help more specifically address wildfire risk for eliminating possible ignition by electric system assets and to harden the existing electric systems for a wildfire event that could damage electric system assets in the proximity of a wildfire event.

Distribution Wildfire Risk Integrity Program

Montana-Dakota plans to conduct wildfire risk assessments and mitigation projects on its rural distribution systems. The rural distribution system consists in general of circuits serving customers outside the city limits of each community. Towns or communities that do not have a local fire department will also be considered as part of the Rural Distribution System. In addition, any areas within an urban circuit that may have a Tier 2 or Tier 3 risk will be reviewed independently. The goals of this program will be to increase wildfire safety, decrease fire ignition likelihood from electrical facilities, increase system reliability, and harden the systems susceptibility to wildfire proximity damage events. Key aspects of this plan include:

Risk Model Prioritization – Distribution circuits that are to go through this inspection, assessment and mitigation process will be prioritized by the overall risk areas determined by the Circuit Wildfire Risk Score as processed by the GIS geographical risk map. Higher priority circuits will be inspected and mitigated first and continuing the process with circuits over time.

Wildfire Risk Assessment Inspections – Montana-Dakota plans to conduct on-the-ground wildfire assessment inspections of its overhead distribution system located in high-wildfire-risk areas. These assessment inspections will gather facility information and vegetation intrusion information necessary to perform detailed evaluations for the development of mitigation risk reduction plans.

Engineering Reviews – Detailed engineering reviews of wildfire inspection data will be conducted to support cost-effective planning and mitigation measures that reduce ignition risks in the electric distribution system. Key components of the review include:

- Engineering studies to assess voltage drop, fault current, fuse sizing, load balancing, and capacitor bank needs.
- Operational engineering reviews to identify any design deficiencies in overhead sections. Including:
 - Pole design strength
 - Conductor sag tension design clearance of existing installation
 - Overloaded or underutilized transformer installations
 - Vintage conductors
 - **Pole Likelihood Risk Factors** – plan to correct or fix known likelihood risk factors associated with pole structures including:
 - Vintage grounding connections – correct old, outdated grounding designs
 - Wildlife coverup – bring structure and equipment up to current wildlife coverup standards including:
 - Cutout covers
 - Insulated jumpers
 - Equipment bushing covers
 - Wildlife climbing barrier – install climbing barriers on equipment poles.
 - Consider eagle avian protection in high eagle risk areas.
 - Consider pole fire barriers on critical structures, i.e. power banks, recloser poles, regulator stations, etc.
 - Replace substandard vintage materials and equipment
 - Aluminum bell insulators
 - Porcelain, enclosed, and early polymer cutouts
 - Porcelain arresters
 - Wood insulator pins and crossarms

- **Maintenance Items**
 - Replacement of broken crossarms, braces, or other equipment
 - Tightening of hardware if required
- **Span and Phase Review**
 - Evaluate the elimination of spans over 310 feet by adding additional pole structures
 - Evaluate reconductor mixed phase conductor construction by matching phase conductor types
 - Evaluate de-energizing deadhead lines without any active customers

Distribution Line Mitigation Plans – Each segment of line that goes through the inspection and engineering assessment process will be evaluated for remediation then moved to construction. The Company will consider future load growth, ongoing maintenance expenses, line accessibility, facility age, vegetation intrusion, and other factors to determine whether a line section should be placed underground or if plans should be developed to improve the existing overhead distribution line.

GIS Tracking – The Distribution Wildfire Risk Mitigation Program will be tracked in GIS for completed mitigation inspections progress as well as mitigation construction completions.

Grid Hardening Initiatives

Montana-Dakota is investing in infrastructure upgrades to enhance wildfire resilience, including:

- Replacement of wooden poles with steel poles in high-risk areas.
- Installation of covered conductors to reduce the likelihood of vegetation-related ignitions.
- Undergrounding of power lines where overhead mitigation is cost-prohibitive or less effective.



Wildfire Event Response

Montana-Dakota recognizes the critical importance of protecting life, property, and infrastructure during wildfire events. The Company's approach to wildfire response is grounded in safety and coordination. Field crews are deployed primarily to monitor conditions and safeguard Montana-Dakota facilities and electric infrastructure. While crews carry limited fire suppression equipment for use on very small fires under controlled circumstances, they are not professionally trained firefighters. The safety of employees, contractors, and the public remains the highest priority in all wildfire response activities.

When responding to an active wildfire, Montana-Dakota personnel report to and follow the direction of the Incident Commander (IC) or other authorized fire response officials with jurisdiction over the incident. Actions taken by Montana-Dakota crews adhere to the Incident Command System (ICS) structure for a coordinated emergency response. For major incidents, the designated first responder or IC will escalate through established channels, including coordination with the Montana-Dakota Customer Experience Team, to maintain situational awareness and operational continuity.

To support continuous improvement, Montana-Dakota conducts regular training and after-action reviews. These exercises validate response procedures, identify gaps, and incorporate lessons learned into future planning. By investing in qualified emergency equipment, hazard assessment tools, and standardized safety measures, Montana-Dakota fosters a culture of preparedness and resilience. These efforts help the Company respond effectively to wildfire events while safeguarding public safety and maintaining reliable electric service.



Restoration Procedure

Montana-Dakota initiates restoration efforts after the fire scene is declared safe and utility access is authorized by the controlling fire agency. A restoration plan that outlines timelines, work activities, and prioritizes zones is promptly communicated to the ICS.

Restoration activities such as infrastructure demolition, aerial inspections, and rebuilding may proceed concurrently, subject to agency approval. A designated Montana-Dakota representative, on-site, facilitates early coordination and maintains ongoing communication with fire personnel, including air operations.

To maintain situational awareness and safety, Montana-Dakota implements a personnel tracking system to account for team members working within the fire perimeter. Before re-energization, all overhead electrical infrastructure within the affected area is patrolled. Issues identified are repaired. Vegetation management teams may also be deployed to inspect and mitigate risks associated with surrounding fuel types.

Montana-Dakota stages essential materials, tools, and equipment in advance to anticipate clearance for restoration activities. In cases of extensive wildfire damage, mutual assistance may be considered based on the scale and urgency of the restoration needs.



Costs to Implement

Montana-Dakota has developed a cost framework to support the implementation of its WMP. This framework reflects both known expenditures and anticipated future investments, structured to align with regulatory expectations and risk-informed decision-making principles.

Transmission vs. Distribution Budgeting

Currently, wildfire-specific budgeting is limited to the distribution system. Transmission-related activities that reduce wildfire risk are embedded within broader reliability and maintenance programs. As higher-risk transmission corridors are identified, targeted wildfire mitigation projects will be scoped and budgeted accordingly.

Cost-Risk Balance

Montana-Dakota prioritizes mitigation measures that deliver the greatest wildfire risk reduction for each dollar invested. The plan follows a risk-informed decision-making approach, evaluating the relative benefit of each proposed action against its cost. Higher-cost projects, such as replacing bare conductor with covered conductor or undergrounding lines, are implemented primarily in areas with the highest ignition risk (Tier 3), where the potential risk reduction justifies the expense. In lower-risk areas, more routine and cost-effective measures are applied. This approach helps maintain proportionality between spending and risk reduction, promoting a responsible balance between cost and wildfire safety.



Historical System Infrastructure Projects

Distribution Line Replacements	2025	2024	2023	2022	2021
Montana	\$2,990,209	\$2,415,495	\$2,809,900	\$2,081,943	\$2,646,283
North Dakota	\$4,376,720	\$4,790,218	\$4,038,099	\$2,586,185	\$3,359,718
South Dakota	\$182,138	\$201,391	\$195,631	\$89,267	\$196,794
Wyoming	\$2,353,473	\$1,382,807	\$667,423	\$536,359	\$729,783

Distribution System Improvement Projects	2025	2024	2023	2022	2021
Montana	\$317,930	\$279,094	\$0	\$0	\$167,363
North Dakota	\$3,174,595	\$2,748,858	\$908,581	\$617,743	\$2,366,954
South Dakota	\$518,941	\$0	\$0	\$0	\$96,011
Wyoming	\$2,278,580	\$1,323,372	\$463,167	\$636,343	\$807,091

Project	2025	2024	2023	2022	2021
Vegetation Management (D&T)	\$2,013,000	\$1,875,205	\$1,883,718	\$1,536,308	\$1,679,627
SCADA Equipment (DMS only)	\$1,537,673	\$2,180,252	\$3,381,283	\$1,950,441	\$2,547,067
LiDAR Inspection	-	\$25,500	-	-	-
Pole Maintenance Program (D)	-	\$270,800	\$160,400	\$198,300	\$224,100

Incremental and Projected Costs

Future Wildfire Risk-Focused Projects (2026)	Montana	North Dakota	South Dakota	Wyoming
Wildfire Risk mitigation budget	\$2,301,131	\$2,742,324	\$580,464	\$936,012
SCADA	\$218,000	\$248,220	\$52,540	\$84,725

In 2026, allocated budget will focus primarily on gathering detailed asset information for circuits located in elevated wildfire risk areas. These inspections will follow established review practices that assess materials and installations such as cutouts, arrestors, coverups, underground risers, insulators, dead ends, cross arms, tree clearance, grounding, and pole brands. The goal is to verify compliance with Montana-Dakota's standards and identify any non-standard or obsolete components that may require engineering evaluation or corrective action. This data collection effort will serve as a critical foundation for future mitigation strategies and infrastructure planning.

External Engagement

Montana-Dakota recognizes the critical importance of engaging with various levels of federal, state, and local agencies, as well as other utilities and community stakeholders, to effectively mitigate wildfire risk. Our proactive approach includes community outreach, coordination with peer utilities, and collaboration with relevant entities such as State Forestry, the Bureau of Land Management (BLM), and Emergency Management authorities.

Montana-Dakota's WMP and outage preparedness strategy are designed to promote robust engagement with key stakeholders. This involves sharing vital information, gathering feedback, and incorporating lessons learned to improve the Company's practices. By collaborating with peer utilities, Montana-Dakota draws on the best practices and experiences of its counterparts, enhancing overall effectiveness in wildfire risk mitigation.

Coordination with Other Utilities (Shared Facilities)

In the event of high-fire-danger conditions, Montana-Dakota has established a procedure to manage breaker lockouts on critical lines. This procedure promotes effective coordination with other utilities, particularly local rural electric cooperatives (RECs), to enhance safety and operational efficiency. Below are the key aspects of this procedure:

Communication and Notification

When a breaker trips and goes into lock-out on a critical line during very high, severe, or red flag warning fire danger conditions, Montana-Dakota's Electric ESO notifies not only the responsible Montana-Dakota employees, but also requests the REC to patrol their affected facilities if they have line taps. The line will not be put back into service until a patrol is complete, or fault indicators or distance relays provide a positive location of the faulted line segment. Montana-Dakota and the RECs work collaboratively to detect faults and clear identified faults before restoring power.

Data Sharing and Analysis

Montana-Dakota gathers fault recorder data for fault location mileage or status of any fault indicators on affected lines. Sharing this data with RECs helps pinpoint the fault location and expedite the resolution process.

This structured approach enables Montana-Dakota and other utilities to efficiently manage and restore service while reducing risks during high fire danger conditions. By establishing clear communication protocols, collaborative inspections, and data sharing practices, Montana-Dakota enhances safety and reliability across its service territory.



Peer-to-Peer programs with other utilities

- **Utility and Energy Associations:** Montana-Dakota participates in a number of regional and national utility associations that focus on best practices, regulatory compliance, and industry advancements.
- **Environmental and Regulatory Bodies:** Montana-Dakota collaborates with environmental regulatory bodies in relation to environmental laws and regulations.
- **Mutual Assistance Groups:** Montana-Dakota is part of mutual assistance groups that provide support during emergencies and operational challenges.

Community Outreach and Public Engagement

Program Objectives

Montana-Dakota's community outreach and public awareness programs aim to enhance public safety and environmental protection through outreach and education efforts. The primary objectives are to:

1. **Increase Awareness:** Educate the community about the presence of utility facilities and any associated risks and the measures taken to mitigate them.
2. **Educate Stakeholders:** Inform stakeholders about the safety measures and the role they can play in preventing accidents, including those that could cause wildfire.
3. **Improve Understanding:** Enhance the community's understanding of how to respond to emergencies.
4. **Continuous Improvement:** Develop programs that can be managed, implemented, evaluated, and enhanced for continual improvement.



Stakeholder Audiences and Outreach Efforts

Affected Public: This group includes residential, commercial, and industrial customers, as well as schools and places of congregation within high-risk areas. Outreach efforts involve delivering messaging on utility safety, hazard awareness, prevention measures, and emergency response through electronic/direct mailers and bill stuffers.

Emergency Officials: This group includes local, city, county, state, or regional officials, agencies, and organizations with emergency response and/or public safety jurisdiction in areas of Montana-Dakota facilities. Examples include fire departments, police/sheriff departments, county and state emergency management agencies, local emergency planning commissions (LEPC), and 911 emergency call centers. They receive information on utility safety, hazard awareness, emergency response plans, and contacts through direct mailers and email newsletters twice annually, with additional annual email communications.

Public Officials: This group is comprised of city, county, state, or federal officials with land use or road jurisdiction. Outreach efforts include messaging on utility safety, hazard awareness, and emergency response plans delivered through direct mailers once every three years and periodic online webinars.

General Public: Messaging for the public takes place in every county within the Montana-Dakota service territory and focuses on utility safety, hazard awareness, prevention measures, and emergency response. This information is delivered through a combination of media methods such as newspaper ads, radio ads, television ads, billboards, online banner ads, social media, or written material.

Emergency Responder Coordination

Montana-Dakota's emergency responder efforts are dedicated to establishing and maintaining effective communication and collaboration with emergency responders. Beyond direct mailers, electronic newsletters, and emails, Montana-Dakota enhances communication through the following initiatives:

Liaison Establishment: Employees in the communities we serve work to establish and maintain a liaison with emergency responders. This involves understanding the responsibilities and resources of emergency response organizations that may respond to a gas or electric emergency and familiarizing these organizations with the Company's capabilities in responding to such emergencies.

Emergency Planning: Montana-Dakota identifies the types of utility emergencies that require notification to appropriate organizations and plan how to engage in mutual assistance with these organizations to minimize hazards to life or property.

Face-to-Face Meetings: Montana-Dakota proactively schedules time to meet with key emergency officials in the response area. These meetings may be hosted jointly with multiple utility companies to promote comprehensive coordination.

Emergency Response Training: Montana-Dakota invites local emergency responders to participate in training sessions hosted by the Company or participate in training organized by the emergency response organization. Joint training sessions may also be sponsored where multiple emergency responders participate.

Mock Drills/Exercises: Montana-Dakota involves local response organizations in company-sponsored drills and exercises or participate in drills coordinated by local emergency response organizations.

Participation in Local Emergency Planning Committees (LEPC): Montana-Dakota actively participates in local emergency planning committees to support ongoing collaboration and preparedness.



Acronym	Definition
ANSI	American National Standards Institute
AWPA	American Wood Protection Association
CRCI	Community Resilience Challenges Index
D	Distribution
DSO	Distribution System Operator
EMS	Energy Management System
EPSS	Enhanced Power Line Safety Settings
ESO	Electric System Operator
GIS	Geographic Information System
HUI	Housing Unit Impact
ICS	Incident Command System
LEPC	Local Emergency Planning Committee
Lidar	Light Detection and Ranging
Maximo	Enterprise Asset Management Platform (IBM Maximo)
MDU	Montana-Dakota Utilities
NERC	North American Electric Reliability Corporation
NESC	National Electrical Safety Code
OMS	Outage Management System
OSHA	Occupational Safety and Health Administration
PSPS	Public Safety Power Shutoff
REC	Rural Electric Cooperative
SCADA	Supervisory Control and Data Acquisition
SWR	System Wildfire Risk
T&D	Transmission and Distribution
WHP	Wildfire Hazard Potential
WCR	Wildfire Consequence Risk
WMP	Wildfire Mitigation Plan

Acronym	Definition
WUI	Wildland-Urban Interface