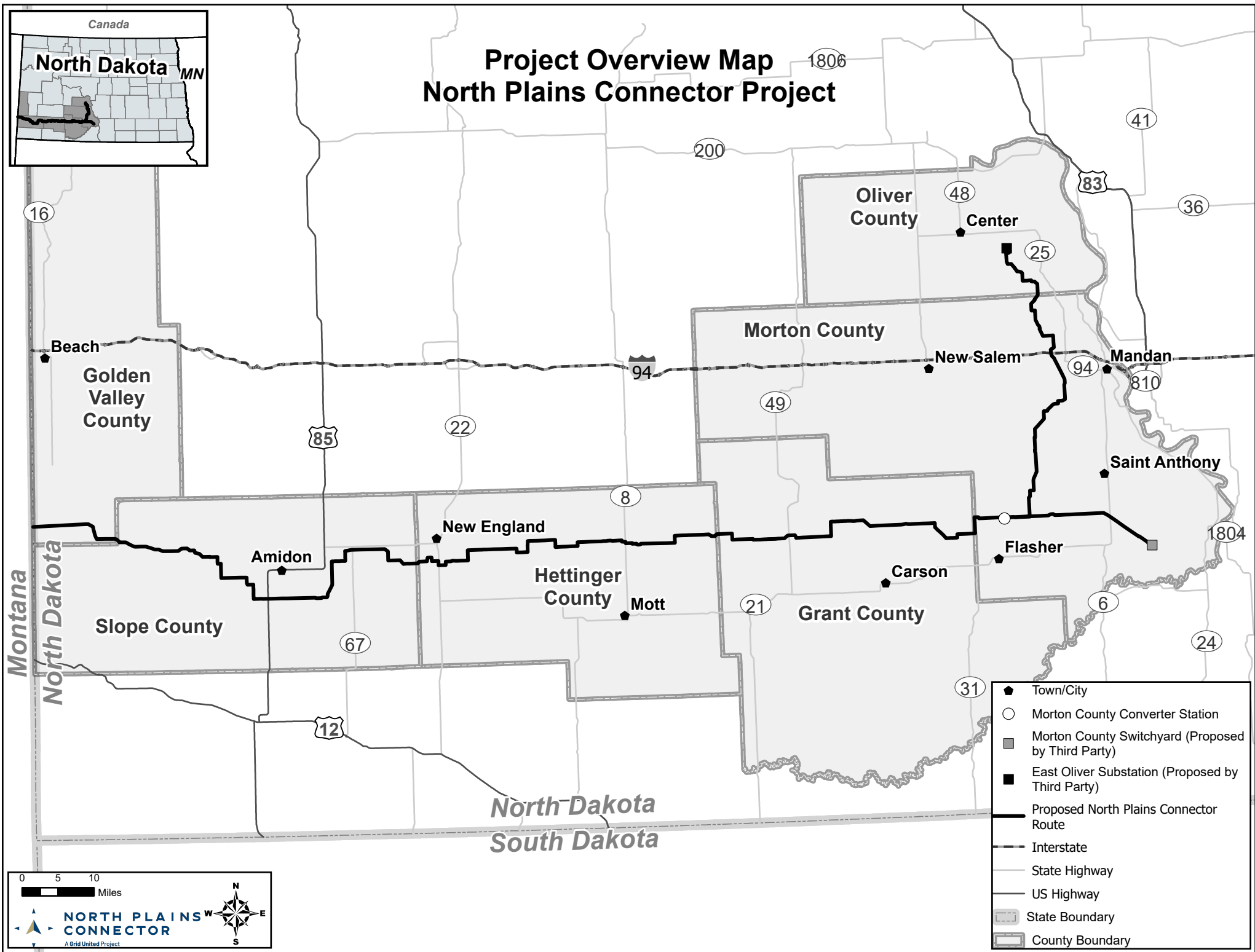
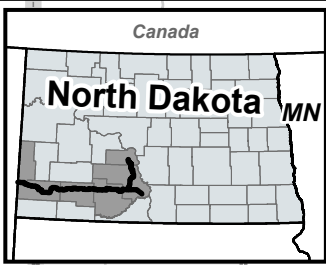


# Project Overview Map North Plains Connector Project



- ◆ Town/City
- Morton County Converter Station
- Morton County Switchyard (Proposed by Third Party)
- East Oliver Substation (Proposed by Third Party)
- Proposed North Plains Connector Route
- Interstate
- State Highway
- US Highway
- State Boundary
- County Boundary

0 5 10 Miles

**NORTH PLAINS CONNECTOR**  
A Grid United Project