

Appendix M

Wildlife Survey Reports

1. Eagle and Raptor Nest Survey Reports
2. Sharp-tailed Grouse Lek Survey Reports
3. Avian Use Surveys
4. Grassland Assessment
5. Whooping Crane Desktop Assessment
6. Bat Acoustic Activity Survey
7. Northern Long-eared and Little Brown Bat Desktop Habitat Assessment

Appendix M.4
Grassland Assessment



Homestead Wind, LLC
120 Garrett Street, Suite 700
Charlottesville, VA 22902

February 4, 2026

Midwest Natural Resources, Inc. (MNR) is pleased to provide the following grassland field assessment report for the 25,000-acre Homestead Wind Project (project) in Williams County, North Dakota (**Figure 1/Map 1**).



Figure 1. Site Location

METHODS

Prior to the 2024 field surveys, MNR conducted a preliminary desktop assessment of the proposed project boundary. The first step in the assessment was to identify grasslands, both unbroken grassland and lands that may have had a history of tilling (broken grassland) but have since been removed from row crop production. The areas identified as potential grasslands during this assessment were then evaluated during the 2024 field effort (May 6-14) to determine either the quality status of unbroken grasslands or the current land use for previously broken grasslands. Due to shifts in the project boundary, additional field surveys in portions of the project area not previously surveyed were conducted from April 30-May 1, 2025.

For unbroken grasslands, survey polygons were evaluated in the field using the following quality definitions:

- High Quality: Containing intact native prairie with 80-100% relative cover of native plant species, and with high species richness

- Mildly Degraded: Containing mostly native prairie with 60-80% relative cover of native plant species, and with high species richness
- Moderately Degraded: Containing native prairie with 40-60% relative cover of native plant species, and with moderate to high species richness
- Highly Degraded: Containing 20-40% relative cover of native plant species, or higher with significantly reduced species richness
- Non-native Grassland: Containing less than 20% relative cover of native plant species

For previously broken grasslands, the following categories were assigned:

- Unmanaged – Non-Native: Broken grassland sites that have revegetated by natural means to grasslands dominated by non-native species
- Unmanaged – Native: Broken grassland sites that have revegetated by natural means to grasslands dominated by native species
- Artificial – Non-Native: Broken grassland sites which are planted in non-native grasses for hay production or livestock grazing
- Artificial – Native: Broken grassland sites which are planted in native species, including CRP plantings and similar situations

Also assessed under both scenarios were whether the area was actively grazed or had evidence of haying. Additionally, absolute cover of native species, non-native species, woody species, and bare ground was assessed. Vegetative cover was assigned using a modified Braun-Blanquet cover scale method (0-5%, 5-25%, 25-50%, 50-75%, 75-100%). Furthermore, field staff recorded dominant species observed for each area (minimum of three where possible).

RESULTS

In total, 174 grassland areas, accounting for 4,005 acres, were evaluated within the current project boundary (**Table 1/Figure 2/Map 2**). Of these areas, 78 areas were identified as unbroken grassland, while the other 96 areas were previously broken grassland. Most of that total acreage was associated with unbroken grasslands. No high-quality or mildly degraded areas were noted, but almost half of the acreage evaluated was deemed moderately degraded. Of the broken grasslands, most of the acreage was dominated by non-natives.

A set of maps illustrating the broken grasslands and unbroken grasslands is provided in **Appendix A**. Corresponding information regarding the evaluation results for each field evaluated area is provided in **Appendix B**. This information has also been provided to you spatially.

Table 1. Summary Results

Number of Features Evaluated	Cumulative Acreage	Broken Grassland/Unbroken Grassland	Quality Designation
14	1,471.5	Unbroken Grassland	Moderately Degraded
15	936.6	Unbroken Grassland	Highly Degraded
49	847.5	Unbroken Grassland	Non-native Grassland
77	328.7	Broken Grassland	Unmanaged - Non-Native
2	3.7	Broken Grassland	Unmanaged - Native
15	413.4	Broken Grassland	Artificial - Non-Native
2	3.4	Broken Grassland	Artificial - Native

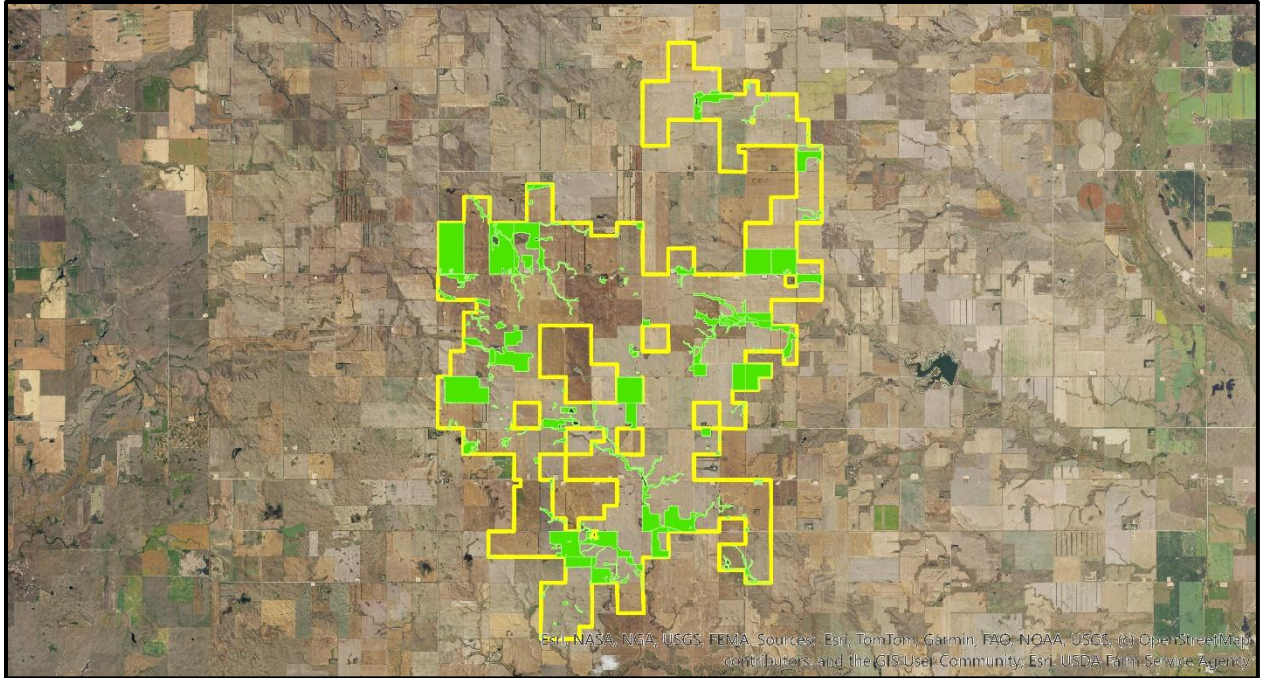


Figure 2. Survey Results (Project Boundary in Yellow and Mapped Grasslands in Green)

In closing, we appreciate the opportunity to assist you with this project and welcome any questions or comments.

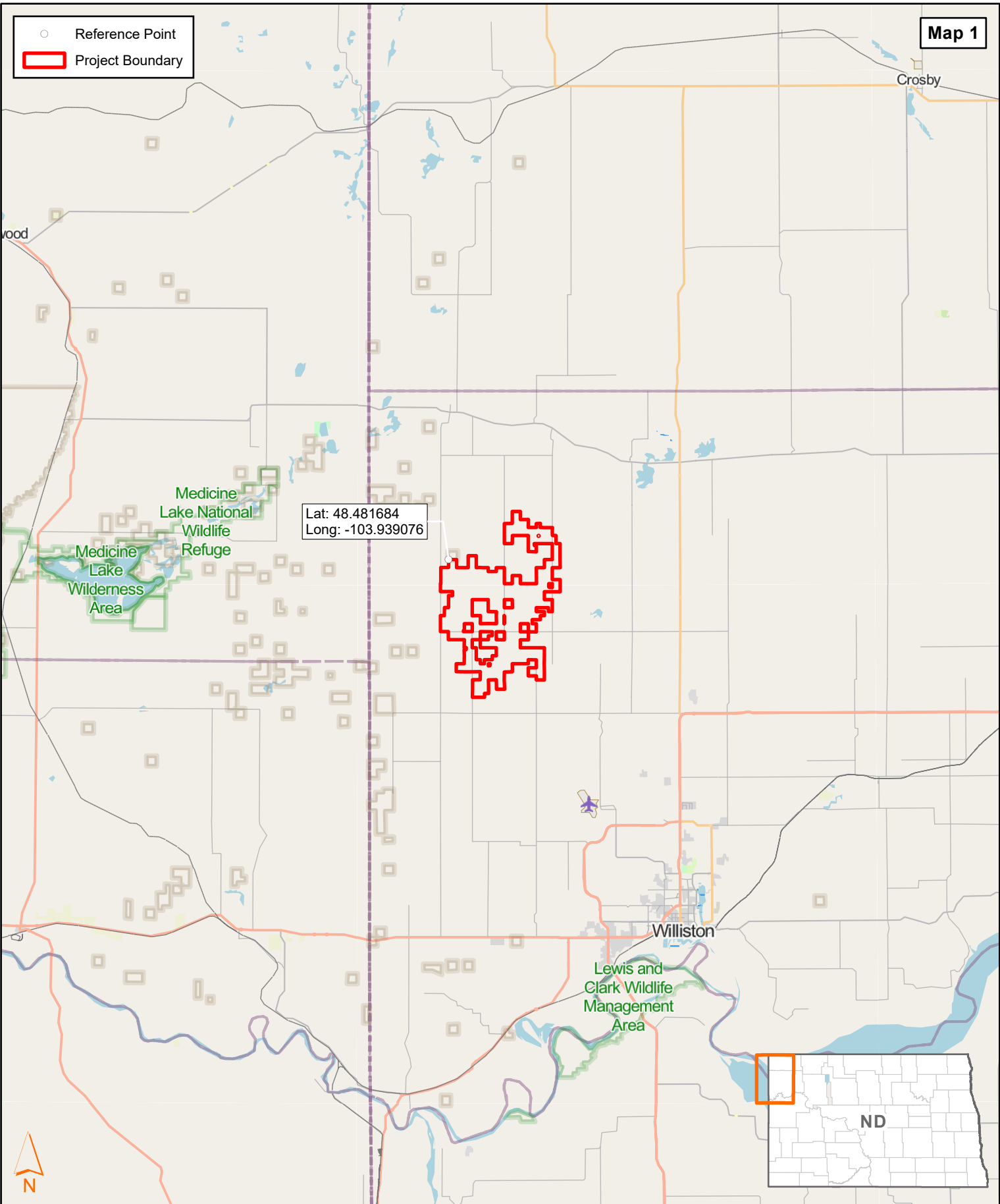
Respectfully submitted,

Scott A. Milburn, MS
Principal Botanist/Founder
Midwest Natural Resources, Inc.
612-310-6260 (mobile)

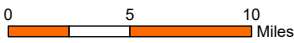
APPENDIX A

PROJECT MAPS

- Reference Point
- ▭ Project Boundary



Sources: OpenStreetMap, US Census Bureau, Date: 7/25/2025

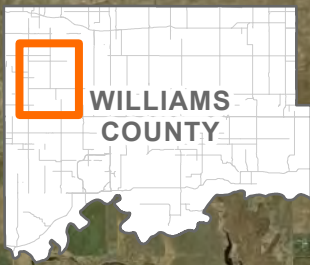
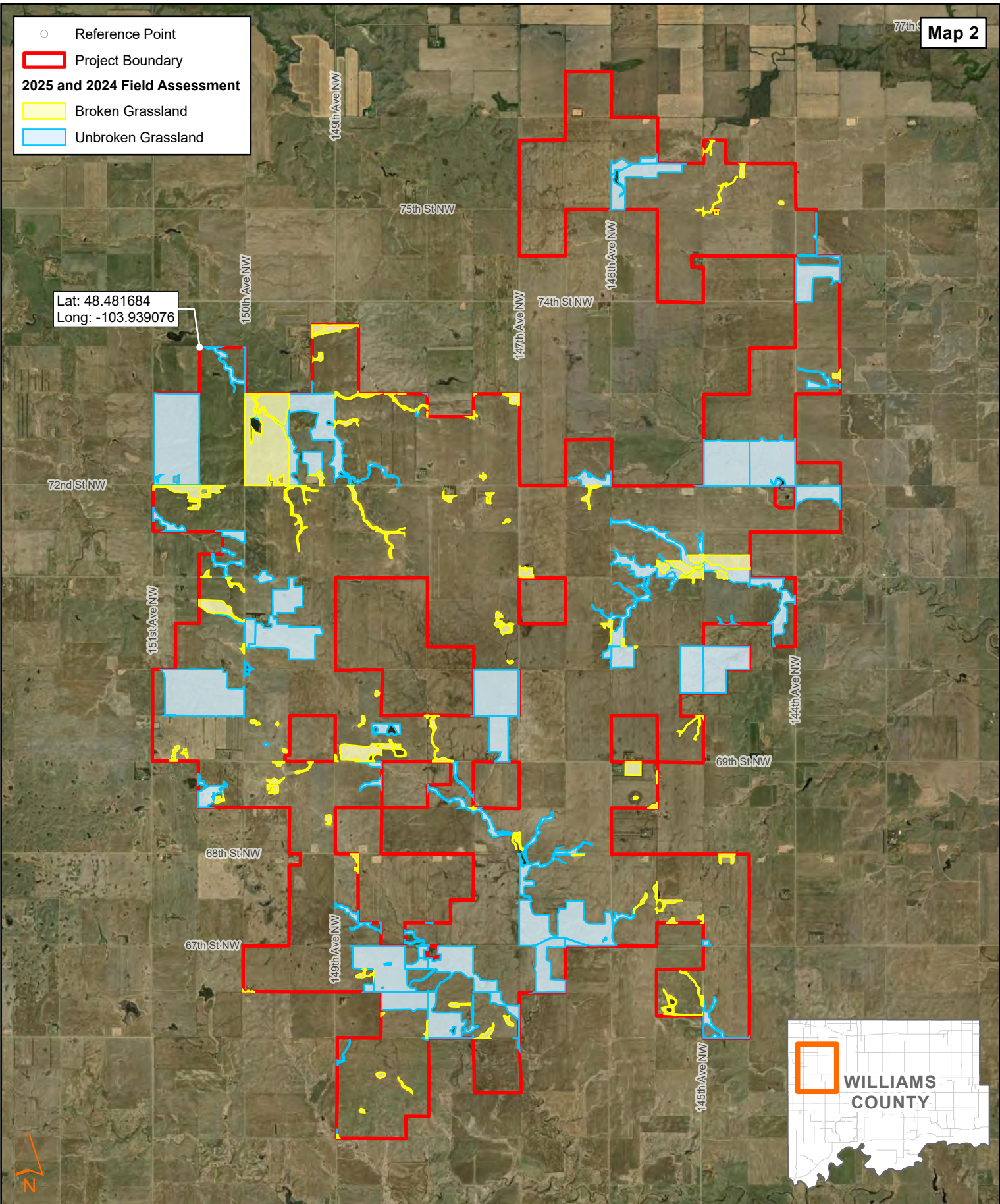


Project Overview
Grasslands Assessment
Homestead Wind Project
Apex Clean Energy
Williams County, North Dakota



○ Reference Point
▭ Project Boundary
2025 and 2024 Field Assessment
▭ Broken Grassland
▭ Unbroken Grassland

Lat: 48.481684
Long: -103.939076

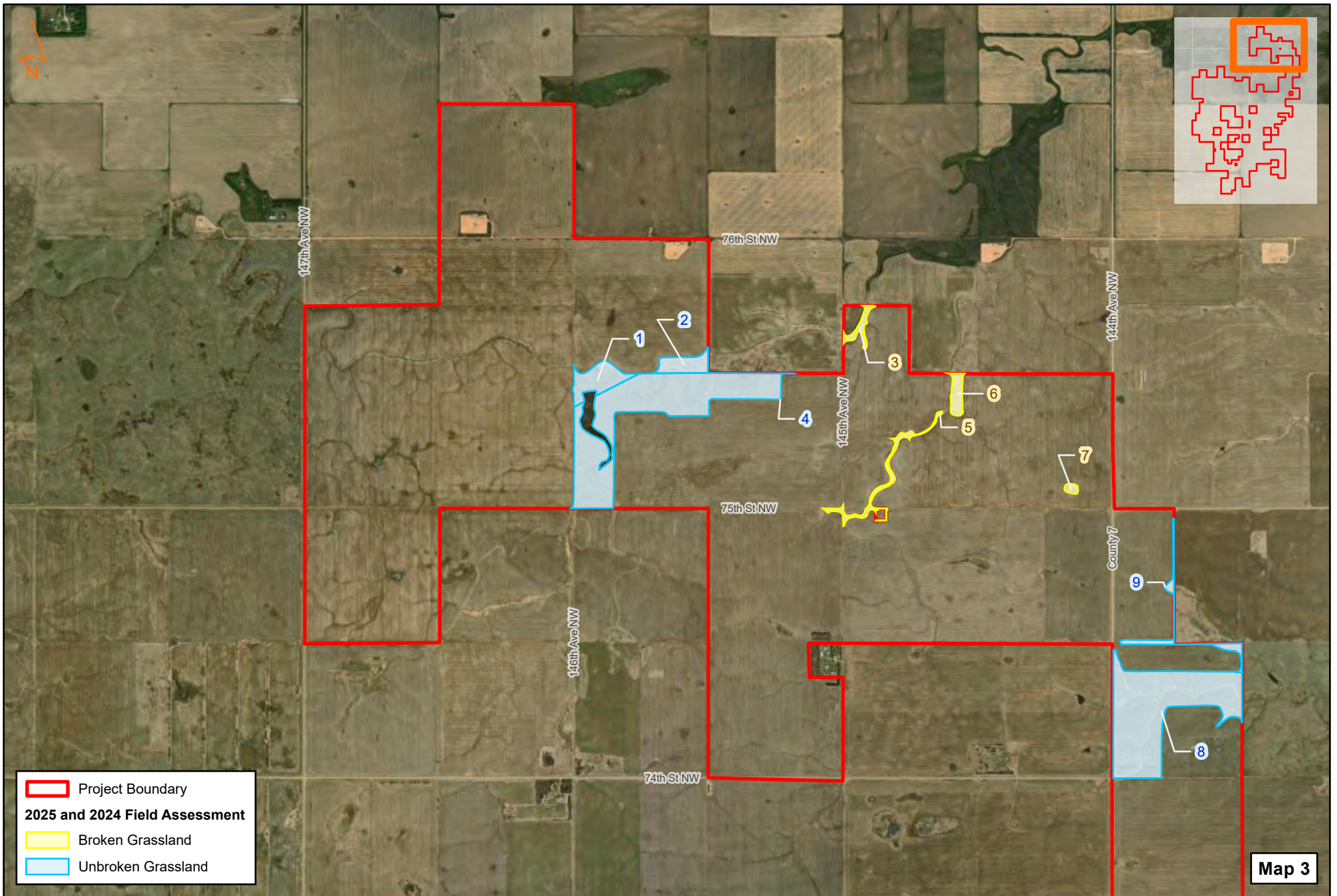


Sources: Esri World Imagery,
US Census Bureau, Date: 2/13/2026

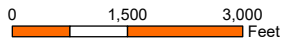


**Field Delineated Grasslands
Grasslands Assessment
Homestead Wind Project
Apex Clean Energy
Williams County, North Dakota**



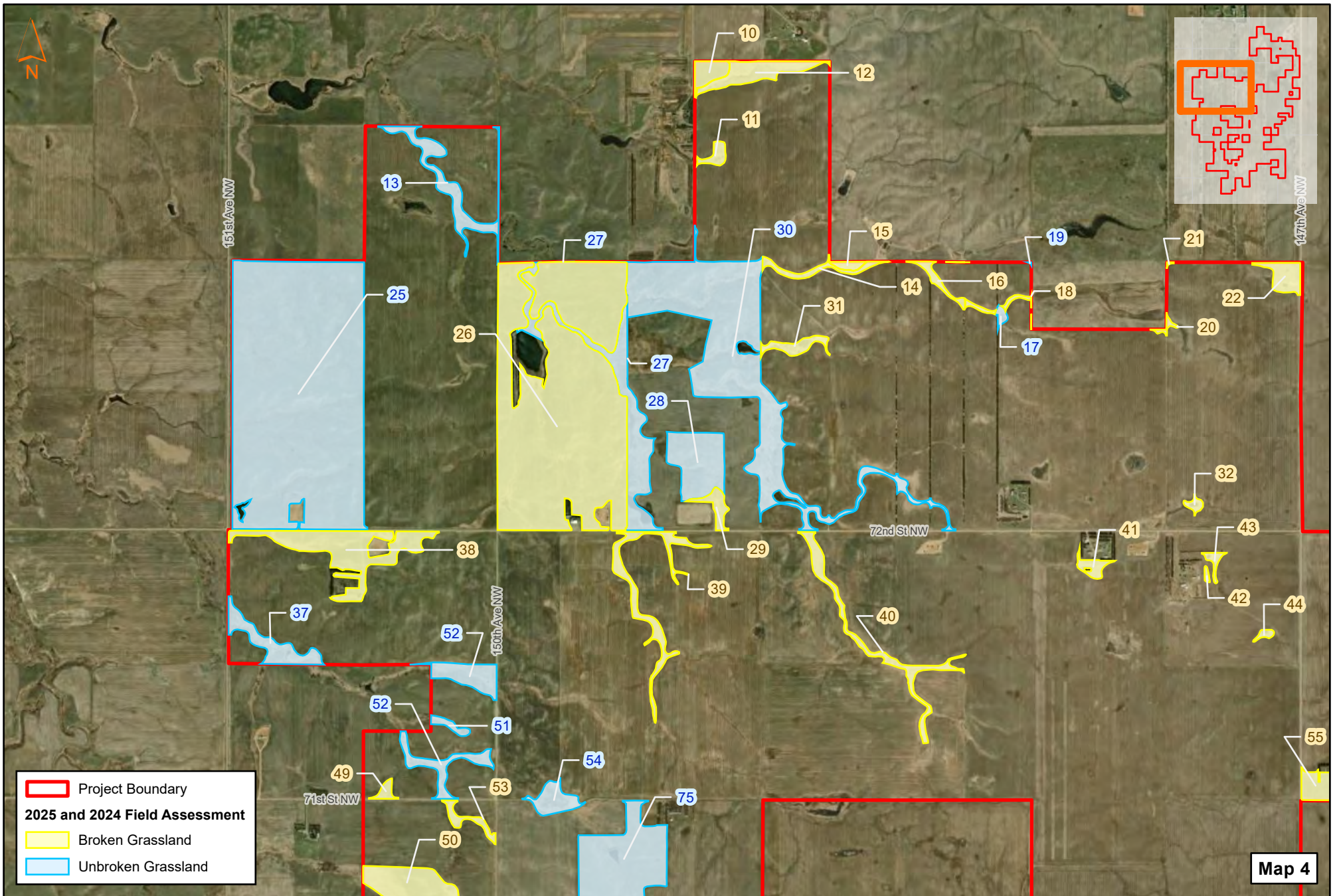


Sources: Esri World Imagery, US Census Bureau, Date: 2/13/2026



**Field Delineated Grasslands
Grasslands Assessment
Homestead Wind Project
Apex Clean Energy
Williams County, North Dakota**





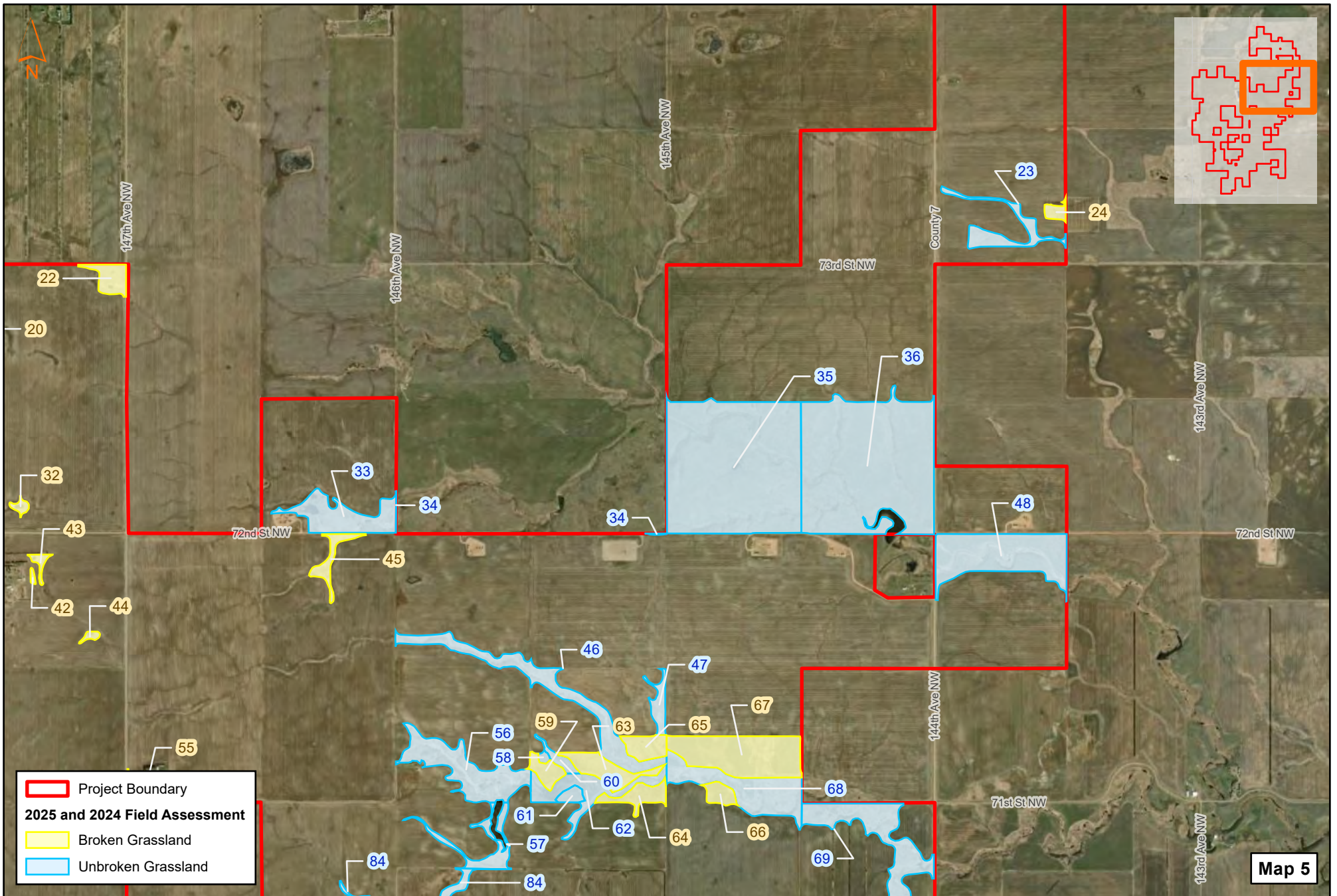
Sources: Esri World Imagery, US Census Bureau, Date: 2/13/2026

0 1,500 3,000
Feet

**Field Delineated Grasslands
Grasslands Assessment
Homestead Wind Project
Apex Clean Energy
Williams County, North Dakota**

Map 4

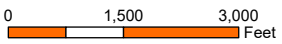




Project Boundary
2025 and 2024 Field Assessment
 Broken Grassland
 Unbroken Grassland

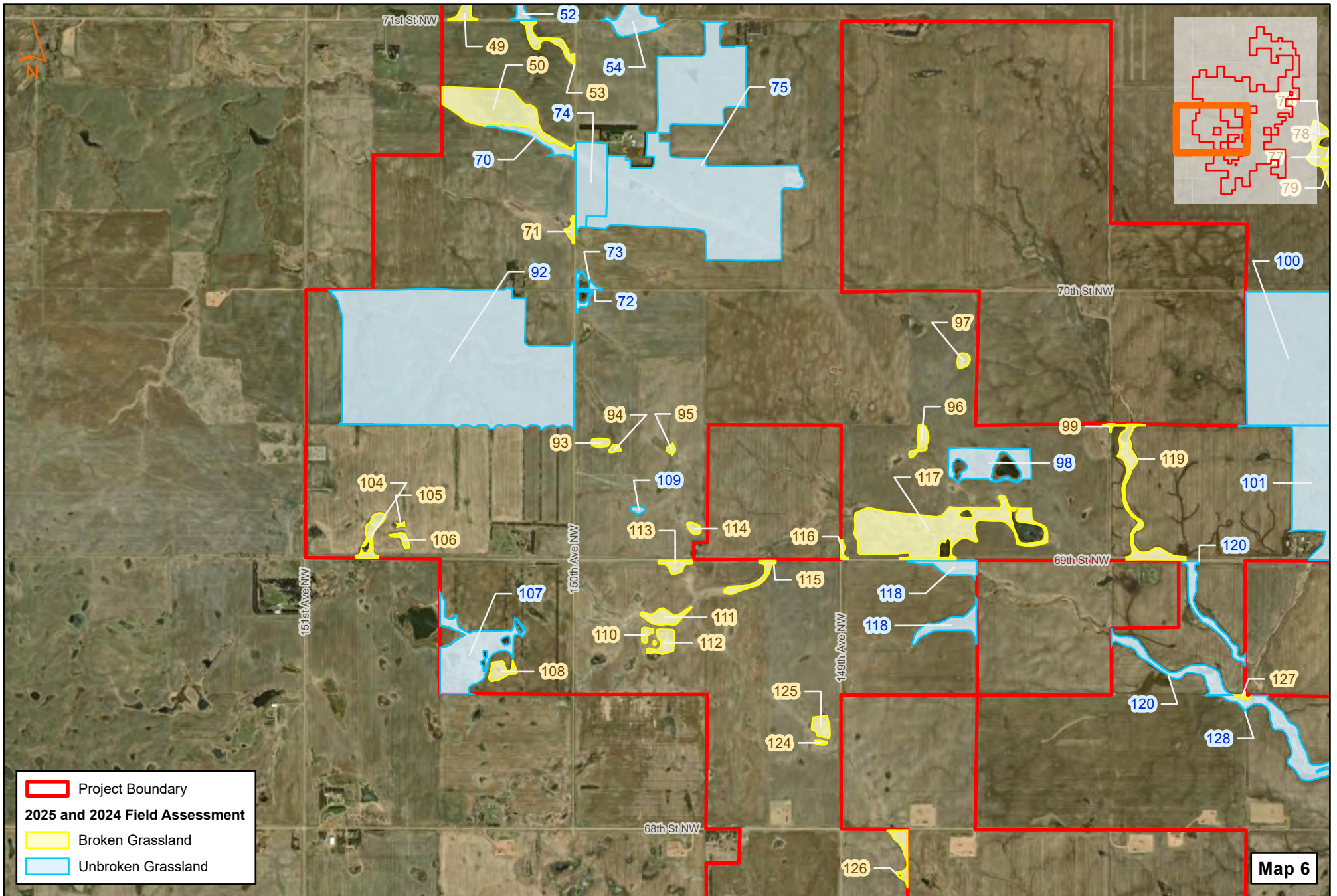
Map 5

Sources: Esri World Imagery, US Census Bureau, Date: 2/13/2026



Field Delineated Grasslands
Grasslands Assessment
Homestead Wind Project
Apex Clean Energy
Williams County, North Dakota



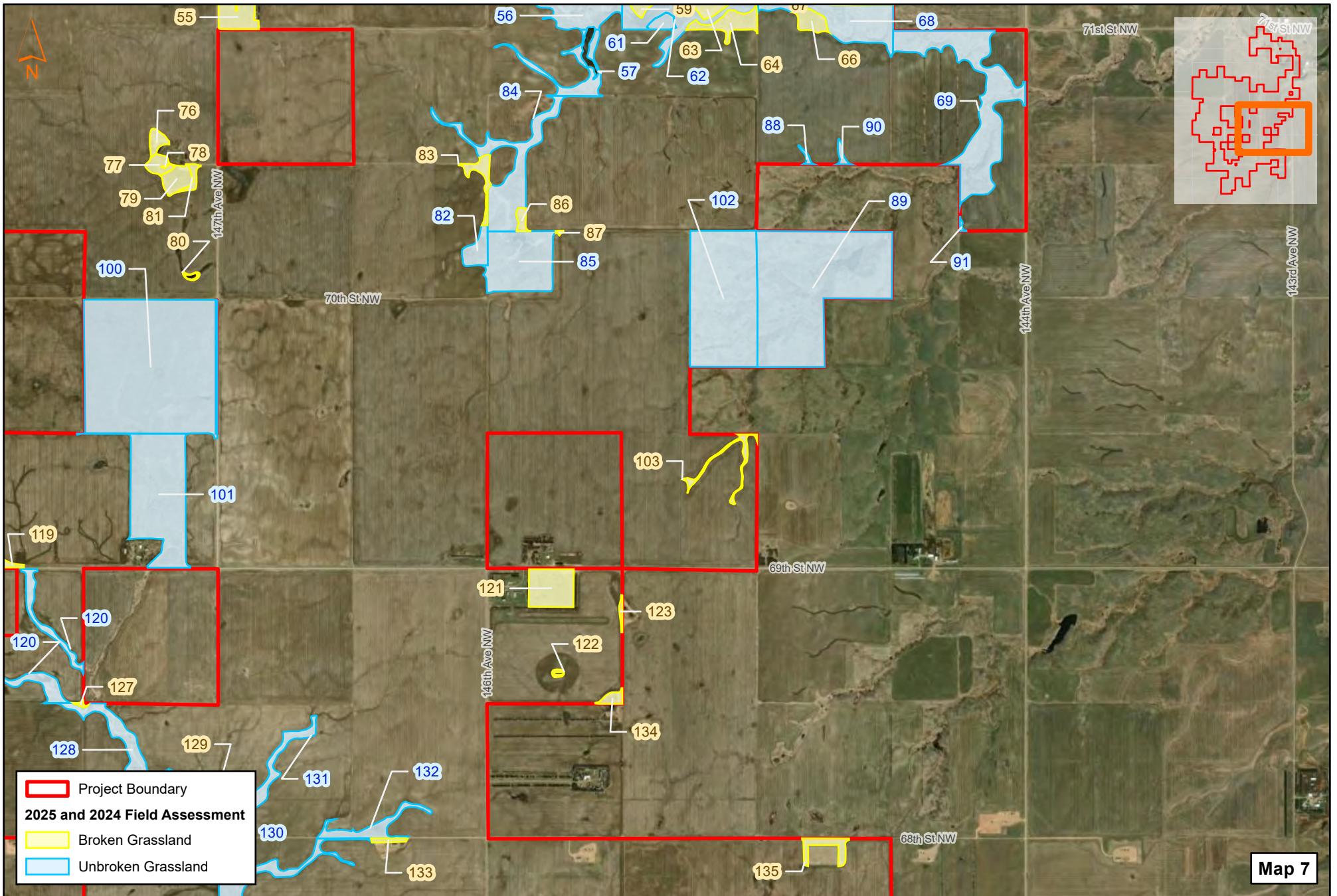


Sources: Esri World Imagery, US Census Bureau, Date: 2/13/2026

**Field Delineated Grasslands
Grasslands Assessment
Homestead Wind Project
Apex Clean Energy
Williams County, North Dakota**



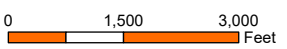
Map 6



Project Boundary
2025 and 2024 Field Assessment
 Broken Grassland
 Unbroken Grassland

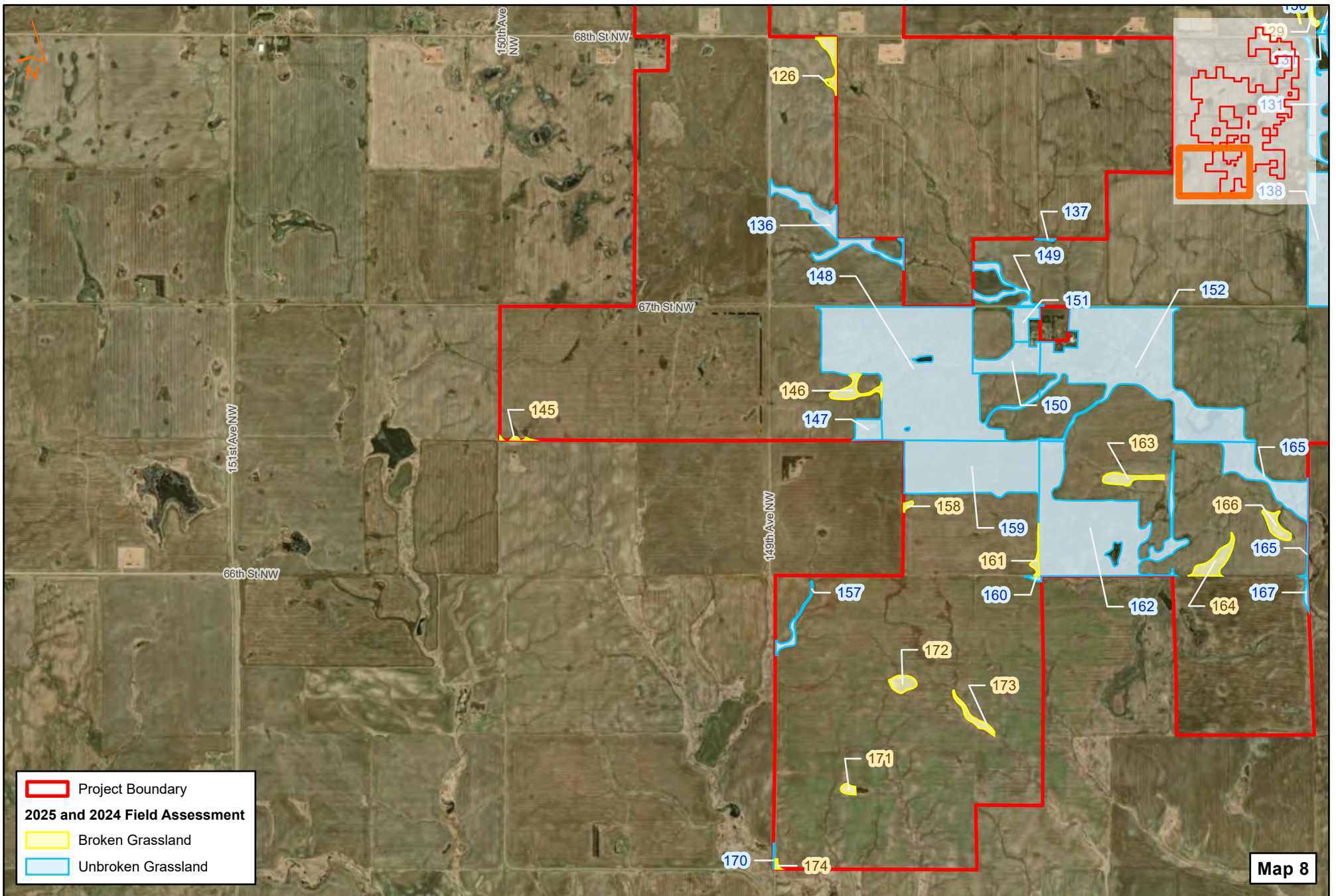
Map 7

Sources: Esri World Imagery, US Census Bureau, Date: 2/13/2026

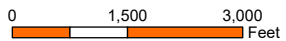


Field Delineated Grasslands
Grasslands Assessment
Homestead Wind Project
Apex Clean Energy
Williams County, North Dakota



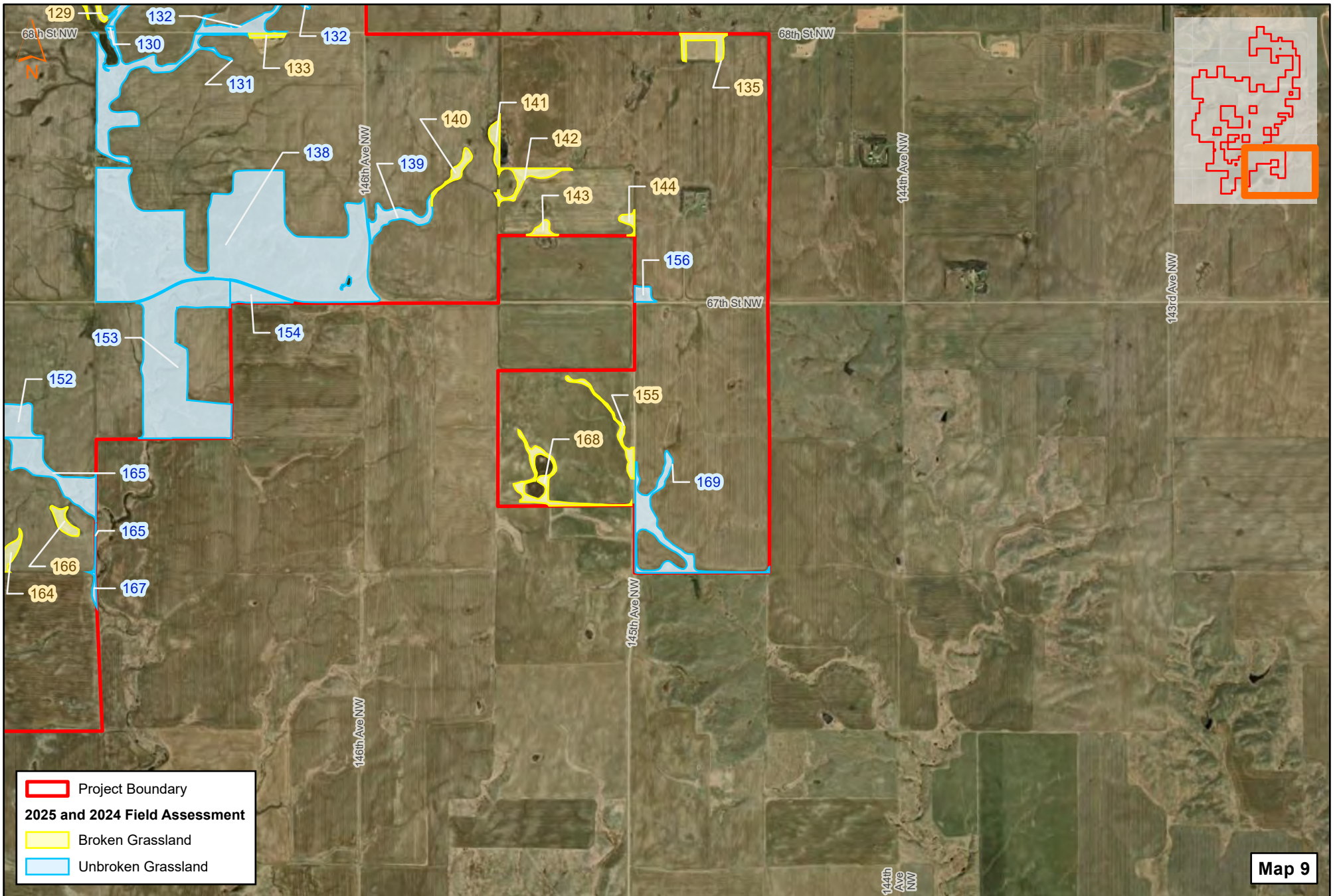


Sources: Esri World Imagery, US Census Bureau, Date: 2/13/2026



**Field Delineated Grasslands
Grasslands Assessment
Homestead Wind Project
Apex Clean Energy
Williams County, North Dakota**





- Project Boundary
- 2025 and 2024 Field Assessment**
- Broken Grassland
- Unbroken Grassland

Sources: Esri World Imagery, US Census Bureau, Date: 2/13/2026



**Field Delineated Grasslands
Grasslands Assessment
Homestead Wind Project
Apex Clean Energy
Williams County, North Dakota**

Map 9



APPENDIX B

GRASSLAND EVALUATION RESULTS

Homestead Wind – Grassland Field Assessment Survey Report – Williams County, North Dakota

Feature ID	Acres	Broken Grassland / Unbroken Grassland	Quality of Area	Native Species Cover	Non-Native Species Cover	Woody Species Cover	Bare Ground Cover	Grazed	Haying	Dominant Species	Notes
1	11.6	Unbroken Grassland	Moderately Degraded	25-50%	50-75%	5-25%	0-5%	Yes	No	<ul style="list-style-type: none"> • <i>Agropyron cristatum</i> • <i>Symphoricarpos occidentalis</i> • <i>Bouteloua sp.</i> • <i>Carex duriuscula</i> • <i>Anemone patens</i> 	Grazed untilled pasture with larger sections of prairie species. Some small areas of water associated with drainages.
2	7.4	Unbroken Grassland	Moderately Degraded	25-50%	50-75%	5-25%	0-5%	Yes	No	<ul style="list-style-type: none"> • <i>Agropyron cristatum</i> • <i>Symphoricarpos occidentalis</i> • <i>Bouteloua sp.</i> • <i>Carex duriuscula</i> • <i>Anemone patens</i> 	Grazed untilled pasture with larger sections of prairie species. Some small areas of water associated with drainages.
3	2.6	Broken Grassland	Unmanaged - Non-Native	0-5%	75-100%	0-5%	0-5%	No	No	<ul style="list-style-type: none"> • <i>Bromus inermis</i> 	Smooth brome dominated grassland associated with stream feature. Likely tilled in past given the dominance of smooth brome and the lack of restrictive topography.
4	83.1	Unbroken Grassland	Moderately Degraded	25-50%	50-75%	5-25%	0-5%	Yes	No	<ul style="list-style-type: none"> • <i>Agropyron cristatum</i> • <i>Symphoricarpos occidentalis</i> • <i>Bouteloua sp.</i> • <i>Carex duriuscula</i> • <i>Anemone patens</i> 	Grazed untilled pasture with larger sections of prairie species. Some small areas of water associated with drainages.
5	5.1	Broken Grassland	Unmanaged - Non-Native	0-5%	75-100%	0-5%	0-5%	No	No	<ul style="list-style-type: none"> • <i>Bromus inermis</i> 	Shallow narrow drainage. Likely tilled at one point. Dominated by non-natives.
6	4.1	Broken Grassland	Unmanaged - Non-Native	0-5%	75-100%	0-5%	0-5%	No	No	<ul style="list-style-type: none"> • <i>Bromus inermis</i> 	Likely previously tilled. Surrounded by row crop. Small rock pile in low spot of area.
7	1.0	Broken Grassland	Unmanaged - Non-Native	0-5%	75-100%	0-5%	0-5%	No	No	<ul style="list-style-type: none"> • <i>Phalaris arundinacea</i> • <i>Typha sp.</i> 	Small wet area surrounded by row crop. Likely previously tilled.

Homestead Wind – Grassland Field Assessment Survey Report – Williams County, North Dakota

Feature ID	Acres	Broken Grassland / Unbroken Grassland	Quality of Area	Native Species Cover	Non-Native Species Cover	Woody Species Cover	Bare Ground Cover	Grazed	Haying	Dominant Species	Notes
8	74.2	Unbroken Grassland	Moderately Degraded	25-50%	25-50%	5-25%	0-5%	Yes	No	<ul style="list-style-type: none"> • <i>Poa pratensis</i> • <i>Hesperostipa comata</i> • <i>Pascopyrum smithii</i> 	Large grassland area on hilly terrain around stream corridor. Native prairie species are present throughout, though the area is invaded by various non native grasses.
9	5.9	Unbroken Grassland	Moderately Degraded	25-50%	25-50%	5-25%	0-5%	Yes	No	<ul style="list-style-type: none"> • <i>Poa pratensis</i> • <i>Hesperostipa comata</i> • <i>Pascopyrum smithii</i> 	Large grassland area on hilly terrain around stream corridor. Native prairie species are present throughout, though the area is invaded by various non native grasses.
10	6.4	Broken Grassland	Unmanaged - Non-Native	0-5%	75-100%	0-5%	0-5%	No	Yes	<ul style="list-style-type: none"> • <i>Bromus inermis</i> • <i>Poa pratensis</i> • <i>Medicago sativa</i> 	Site contains hills and dominated by non native grasses.
11	3.1	Broken Grassland	Unmanaged - Non-Native	0-5%	75-100%	0-5%	0-5%	No	No	<ul style="list-style-type: none"> • <i>Bromus inermis</i> • <i>Agropyron cristatum</i> 	Site contains hills and a rock pile, appears to be an old homestead. Site is dominated by smooth brome.
12	14.6	Broken Grassland	Unmanaged - Non-Native	0-5%	75-100%	0-5%	0-5%	No	No	<ul style="list-style-type: none"> • <i>Bromus inermis</i> • <i>Poa pratensis</i> • <i>Symphoricarpos occidentalis</i> 	Site contains hills adjacent to a drainage way. Site is dominated by smooth brome.
13	17.7	Unbroken Grassland	Non-native Grassland	0-5%	75-100%	0-5%	0-5%	No	No	<ul style="list-style-type: none"> • <i>Bromus inermis</i> • <i>Poa pratensis</i> 	Grassy drainage way in ag field.
14	5.2	Broken Grassland	Unmanaged - Non-Native	0-5%	75-100%	0-5%	0-5%	No	No	<ul style="list-style-type: none"> • <i>Bromus inermis</i> • <i>Alopecurus arundinaceus</i> • <i>Poa pratensis</i> 	Site contains a drainage way and is dominated by non native grasses.

Homestead Wind – Grassland Field Assessment Survey Report – Williams County, North Dakota

Feature ID	Acres	Broken Grassland / Unbroken Grassland	Quality of Area	Native Species Cover	Non-Native Species Cover	Woody Species Cover	Bare Ground Cover	Grazed	Haying	Dominant Species	Notes
15	2.1	Broken Grassland	Unmanaged - Non-Native	0-5%	75-100%	0-5%	0-5%	No	Yes	<ul style="list-style-type: none"> • <i>Bromus inermis</i> • <i>Poa pratensis</i> 	Site is a hillside that is dominated by smooth brome with clear indication of haying.
16	4.4	Broken Grassland	Unmanaged - Non-Native	0-5%	75-100%	0-5%	0-5%	No	No	<ul style="list-style-type: none"> • <i>Bromus inermis</i> • <i>Phalaris arundinacea</i> • <i>Typha sp.</i> 	Rock piles and evidence of disturbance. Likely tilled historically, some rutting evidence. Dominated by non-natives.
17	1.5	Unbroken Grassland	Non-native Grassland	0-5%	75-100%	5-25%	0-5%	No	No	<ul style="list-style-type: none"> • <i>Bromus inermis</i> • <i>Typha sp.</i> 	Steep drop with rock piles and woodys.
18	1.0	Broken Grassland	Unmanaged - Non-Native	0-5%	75-100%	0-5%	0-5%	No	No	<ul style="list-style-type: none"> • <i>Bromus inermis</i> • <i>Phalaris arundinacea</i> • <i>Typha sp.</i> 	Shallow, narrow wet area dominated by non-natives. Likely previously tilled.
19	0.0	Unbroken Grassland	Highly Degraded	25-50%	75-100%	5-25%	0-5%	Yes	No	<ul style="list-style-type: none"> • <i>Agropyron cristatum</i> • <i>Bromus inermis</i> • <i>Poa pratensis</i> • <i>Anemone patens</i> • <i>Symphoricarpos occidentalis</i> 	Degraded untilled pasture. So,e remnant prairie species.
20	1.0	Broken Grassland	Unmanaged - Non-Native	0-5%	75-100%	0-5%	0-5%	No	No	<ul style="list-style-type: none"> • <i>Bromus inermis</i> 	Photo taken from slope. Likely tilled. Small rock pile. Smooth brome dominated.
21	0.1	Broken Grassland	Unmanaged - Non-Native	0-5%	75-100%	0-5%	0-5%	No	No	<ul style="list-style-type: none"> • <i>Bromus inermis</i> 	Corner of crop field. Likely previously tilled.

Homestead Wind – Grassland Field Assessment Survey Report – Williams County, North Dakota

Feature ID	Acres	Broken Grassland / Unbroken Grassland	Quality of Area	Native Species Cover	Non-Native Species Cover	Woody Species Cover	Bare Ground Cover	Grazed	Haying	Dominant Species	Notes
22	7.8	Broken Grassland	Unmanaged - Non-Native	0-5%	75-100%	0-5%	0-5%	No	No	<ul style="list-style-type: none"> • <i>Bromus inermis</i> • <i>Agropyron cristatum</i> 	Likely historically tilled. Dominated by non-natives. Small open water with basin as seen on aerial. Remnants of fallen apart structure.
23	12.3	Unbroken Grassland	Non-native Grassland	0-5%	75-100%	0-5%	0-5%	No	No	<ul style="list-style-type: none"> • <i>Bromus inermis</i> • <i>Poa pratensis</i> 	Smooth brome dominated grassland associated with drainage way in ag field.
24	2.7	Broken Grassland	Unmanaged - Non-Native	0-5%	75-100%	0-5%	0-5%	No	No	<ul style="list-style-type: none"> • <i>Agropyron cristatum</i> • <i>Bromus inermis</i> 	Grassland around old farmstead buildings dominated by non native grasses.
25	306.7	Unbroken Grassland	Moderately Degraded	50-75%	25-50%	5-25%	0-5%	Yes	No	<ul style="list-style-type: none"> • <i>Pascopyrum smithii</i> • <i>Anemone patens</i> • <i>Symphoricarpos occidentalis</i> • <i>Poa pratensis</i> • <i>Selaginella densa</i> 	Extensive rangeland tract with intact native prairie, more or less, throughout. Western wheatgrass dominates but Kentucky bluegrass and smooth brome are abundant in areas.
26	267.8	Broken Grassland	Artificial - Non-Native	0-5%	75-100%	0-5%	0-5%	No	Yes	<ul style="list-style-type: none"> • <i>Bromus inermis</i> • <i>Medicago sativa</i> • <i>Poa pratensis</i> 	Large hay field dominated by smooth brome and alfalfa.
27	41.7	Unbroken Grassland	Non-native Grassland	0-5%	75-100%	0-5%	0-5%	No	No	<ul style="list-style-type: none"> • <i>Bromus inermis</i> • <i>Typha angustifolia</i> 	Site consists of a broad drainage way dominated by cattails, with steep hills adjacent dominated by smooth brome.
28	28.2	Unbroken Grassland	Non-native Grassland	5-25%	50-75%	5-25%	0-5%	Yes	No	<ul style="list-style-type: none"> • <i>Bromus inermis</i> 	Grazed untilled pasture. Small areas of prairie species (little bluestem, coneflower, and pasqueflower) on slopes, but overall heavily degraded and dominated by non-natives.

Homestead Wind – Grassland Field Assessment Survey Report – Williams County, North Dakota

Feature ID	Acres	Broken Grassland / Unbroken Grassland	Quality of Area	Native Species Cover	Non-Native Species Cover	Woody Species Cover	Bare Ground Cover	Grazed	Haying	Dominant Species	Notes
29	4.9	Broken Grassland	Unmanaged - Non-Native	0-5%	75-100%	5-25%	0-5%	Yes	No	<ul style="list-style-type: none"> • <i>Bromus inermis</i> • <i>Symphoricarpos occidentalis</i> 	Even-leveled field of mostly smooth brome in between crop fields. Likely previously tilled. Area included in the parcel's fencing, so it's likely grazed.
30	141.9	Unbroken Grassland	Moderately Degraded	50-75%	25-50%	5-25%	0-5%	Yes	No	<ul style="list-style-type: none"> • <i>Carex filifolia</i> • <i>Hesperostipa comata</i> • <i>Schizachyrium scoparium</i> • <i>Pascopyrum smithii</i> • <i>Poa pratensis</i> 	Nice rangeland dominated by native dry prairie. Degraded in low spots
31	5.4	Broken Grassland	Unmanaged - Non-Native	0-5%	75-100%	0-5%	0-5%	No	No	<ul style="list-style-type: none"> • <i>Bromus inermis</i> • <i>Phalaris arundinacea</i> 	Site is dominated by non-native grasses containing a drainage way.
32	1.6	Broken Grassland	Unmanaged - Non-Native	0-5%	75-100%	0-5%	0-5%	No	No	<ul style="list-style-type: none"> • <i>Phalaris arundinacea</i> • <i>Bromus inermis</i> • <i>Poa pratensis</i> 	Artificial farm wetland. Likely previously tilled. Surrounded by row crop. Open water surrounded by non-natives.
33	24.3	Unbroken Grassland	Non-native Grassland	0-5%	75-100%	0-5%	0-5%	No	No	<ul style="list-style-type: none"> • <i>Bromus inermis</i> • <i>Poa pratensis</i> 	Area mostly monoculture of smooth brome. Very few natives on slopes that would have been difficult to till. Degraded habitat.
34	0.2	Unbroken Grassland	Highly Degraded	25-50%	50-75%	5-25%	0-5%	Yes	No	<ul style="list-style-type: none"> • <i>Bromus inermis</i> • <i>Poa pratensis</i> • <i>Symphoricarpos occidentalis</i> 	Grazed untilled pasture with drainage going through on the north edge. Typha around wet areas. Prairies species found in areas without wolfberry.
35	156.0	Unbroken Grassland	Moderately Degraded	25-50%	25-50%	5-25%	0-5%	Yes	No	<ul style="list-style-type: none"> • <i>Poa pratensis</i> • <i>Hesperostipa comata</i> • <i>Symphoricarpos occidentalis</i> 	Grassland in hilly terrain and around stream corridor. Many portions heavily invaded by Kentucky bluegrass, and with large colonies of wolfberry. Patches of prairie species persist on many hills.

Homestead Wind – Grassland Field Assessment Survey Report – Williams County, North Dakota

Feature ID	Acres	Broken Grassland / Unbroken Grassland	Quality of Area	Native Species Cover	Non-Native Species Cover	Woody Species Cover	Bare Ground Cover	Grazed	Haying	Dominant Species	Notes
36	152.2	Unbroken Grassland	Moderately Degraded	25-50%	25-50%	5-25%	0-5%	Yes	No	<ul style="list-style-type: none"> • <i>Poa pratensis</i> • <i>Hesperostipa comata</i> • <i>Symphoricarpos occidentalis</i> 	Grassland on hilly terrain and around stream corridor. Heavily invaded by Kentucky bluegrass in many areas and with large colonies of wolfberry, however, intact, diverse prairie is present on a number of large hillsides.
37	14.5	Unbroken Grassland	Non-native Grassland	0-5%	75-100%	0-5%	0-5%	No	No	<ul style="list-style-type: none"> • <i>Bromus inermis</i> • <i>Poa pratensis</i> 	Site consists of a broad grassy drainage way dominated by smooth brome. Scattered willows present.
38	39.0	Broken Grassland	Unmanaged - Non-Native	0-5%	75-100%	0-5%	0-5%	No	Yes	<ul style="list-style-type: none"> • <i>Bromus inermis</i> • <i>Poa pratensis</i> 	Grassy area at the edge of farm field. Portions of this feature are hayed.
39	16.2	Broken Grassland	Artificial - Non-Native	0-5%	75-100%	0-5%	0-5%	No	Yes	<ul style="list-style-type: none"> • <i>Bromus inermis</i> • <i>Poa pratensis</i> 	Grassy swale within field with clear indications of haying. The southern tip is less consistently hayed.
40	15.7	Broken Grassland	Unmanaged - Non-Native	0-5%	75-100%	0-5%	0-5%	No	No	<ul style="list-style-type: none"> • <i>Bromus inermis</i> • <i>Poa pratensis</i> • <i>Phalaris arundinacea</i> 	Drainage swale through a large field. The site is dominated by smooth brome.
41	3.6	Broken Grassland	Artificial - Non-Native	0-5%	75-100%	0-5%	0-5%	No	Yes	<ul style="list-style-type: none"> • <i>Bromus inermis</i> 	Actively hayed area. Segment north includes planted red pines. Hayed field dominated by smooth brome.
42	0.5	Broken Grassland	Unmanaged - Non-Native	0-5%	75-100%	0-5%	0-5%	No	No	<ul style="list-style-type: none"> • <i>Agropyron cristatum</i> • <i>Poa pratensis</i> • <i>Bromus inermis</i> 	Area tilled with piles of old tires present.

Homestead Wind – Grassland Field Assessment Survey Report – Williams County, North Dakota

Feature ID	Acres	Broken Grassland / Unbroken Grassland	Quality of Area	Native Species Cover	Non-Native Species Cover	Woody Species Cover	Bare Ground Cover	Grazed	Haying	Dominant Species	Notes
43	1.8	Broken Grassland	Artificial - Native	0-5%	75-100%	0-5%	0-5%	No	No	• <i>Bromus inermis</i>	Plot likely previously tilled, now fallow. Dominated by smooth brome. Excavated wet basin.
44	1.1	Broken Grassland	Unmanaged - Non-Native	0-5%	75-100%	0-5%	0-5%	No	No	• <i>Agropyron cristatum</i>	Highly mounded around artificial wet depression. Evidence of disturbance and surrounded by non-natives, then row crop.
45	5.9	Broken Grassland	Unmanaged - Non-Native	0-5%	75-100%	0-5%	0-5%	No	No	• <i>Phalaris arundinacea</i>	Drainage along road. Likely previously tilled.
46	35.4	Unbroken Grassland	Non-native Grassland	0-5%	0-5%	0-5%	0-5%	No	No	• <i>Bromus inermis</i> • <i>Typha sp.</i> • <i>Phalaris arundinacea</i> • <i>Spartina pectinata</i>	Untilled drainage with steep slopes. Dominated by smooth brome with Typha in wet feature. Some prairie species along slopes where brome is less dense. More reed canary grass as feature heads north.
47	5.6	Unbroken Grassland	Non-native Grassland	0-5%	75-100%	0-5%	0-5%	No	No	• <i>Bromus inermis</i> • <i>Typha sp.</i> • <i>Phalaris arundinacea</i>	Drainage dominated by smooth brome along slopes and Typha with reed canary grass in the wetland.
48	48.2	Unbroken Grassland	Highly Degraded	5-25%	75-100%	5-25%	0-5%	Yes	No	• <i>Bromus inermis</i> • <i>Poa pratensis</i> • <i>Phalaris arundinacea</i>	Grassland surrounding stream corridor. Dominated by non native grasses with only small patches of native species persisting.
49	2.1	Broken Grassland	Artificial - Non-Native	0-5%	75-100%	0-5%	0-5%	No	Yes	• <i>Bromus inermis</i> • <i>Poa pratensis</i> • <i>Melilotus officinalis</i>	Small grassland feature dominated by smooth brome and having no thatch or standing vegetation from previous years.

Homestead Wind – Grassland Field Assessment Survey Report – Williams County, North Dakota

Feature ID	Acres	Broken Grassland / Unbroken Grassland	Quality of Area	Native Species Cover	Non-Native Species Cover	Woody Species Cover	Bare Ground Cover	Grazed	Haying	Dominant Species	Notes
50	26.7	Broken Grassland	Artificial - Non-Native	0-5%	75-100%	0-5%	0-5%	No	Yes	<ul style="list-style-type: none"> • <i>Bromus inermis</i> • <i>Poa pratensis</i> 	Smooth brome dominated hay field
51	2.6	Unbroken Grassland	Non-native Grassland	0-5%	75-100%	0-5%	0-5%	No	No	<ul style="list-style-type: none"> • <i>Bromus inermis</i> 	Grass-dominated drainage way through farm field.
52	23.8	Unbroken Grassland	Non-native Grassland	0-5%	75-100%	0-5%	0-5%	No	No	<ul style="list-style-type: none"> • <i>Bromus inermis</i> 	This feature consists of a series of grassy drainage ways dominated by smooth brome. At the northern edge of the property, the land use history is difficult to determine and may contain areas with a history of farming.
53	4.0	Broken Grassland	Artificial - Non-Native	0-5%	75-100%	0-5%	0-5%	No	Yes	<ul style="list-style-type: none"> • <i>Bromus inermis</i> 	Grassy swale through farm field evidence of haying
54	9.0	Unbroken Grassland	Highly Degraded	25-50%	50-75%	0-5%	0-5%	No	No	<ul style="list-style-type: none"> • <i>Calamagrostis canadensis</i> • <i>Phalaris arundinacea</i> • <i>Typha angustifolia</i> 	Large wetland basin dominated by reed canary grass.
55	9.2	Broken Grassland	Artificial - Non-Native	0-5%	75-100%	0-5%	0-5%	No	Yes	<ul style="list-style-type: none"> • <i>Bromus inermis</i> 	Hayed field along road near farm silos. Consistent non-natives.
56	33.7	Unbroken Grassland	Non-native Grassland	0-5%	75-100%	5-25%	0-5%	No	No	<ul style="list-style-type: none"> • <i>Bromus inermis</i> • <i>Agropyron cristatum</i> • <i>Symphoricarpos occidentalis</i> 	Untilled due to topography and drainage swale. Dominated by non-natives.

Homestead Wind – Grassland Field Assessment Survey Report – Williams County, North Dakota

Feature ID	Acres	Broken Grassland / Unbroken Grassland	Quality of Area	Native Species Cover	Non-Native Species Cover	Woody Species Cover	Bare Ground Cover	Grazed	Haying	Dominant Species	Notes
57	11.2	Unbroken Grassland	Non-native Grassland	5-25%	50-75%	0-5%	0-5%	No	No	<ul style="list-style-type: none"> • <i>Bromus inermis</i> • <i>Melilotus sp.</i> 	Sloped areas are untilled. The photo is taken from far west where rocks were clearly seen on the slope. As drain heads, south, more typha around wet areas.
58	1.0	Unbroken Grassland	Moderately Degraded	25-50%	50-75%	0-5%	0-5%	No	No	<ul style="list-style-type: none"> • <i>Melilotus sp.</i> • <i>Bouteloua gracilis</i> • <i>Comandra umbellata</i> • <i>Bromus inermis</i> • <i>Elymus repens</i> 	Area of reduced smooth brome and more remnant prairie species.
59	6.0	Broken Grassland	Unmanaged - Non-Native	0-5%	75-100%	5-25%	0-5%	No	No	<ul style="list-style-type: none"> • <i>Bromus inermis</i> • <i>Melilotus sp.</i> 	Likely previously tilled area due to nonnative cover.
60	3.5	Unbroken Grassland	Non-native Grassland	0-5%	75-100%	0-5%	0-5%	No	No	<ul style="list-style-type: none"> • <i>Bromus inermis</i> 	Drainage system that connects to larger drainage further south. Treat separately from upland tilled area.
61	2.9	Unbroken Grassland	Highly Degraded	25-50%	50-75%	0-5%	0-5%	No	No	<ul style="list-style-type: none"> • <i>Melilotus sp.</i> • <i>Native bunchgrasses</i> • <i>Anemone patens</i> • <i>Bouteloua gracilis</i> 	Fairly degraded downslope but areas higher up with prairie species. Historically grazed.
62	20.2	Unbroken Grassland	Non-native Grassland	0-5%	75-100%	5-25%	0-5%	No	No	<ul style="list-style-type: none"> • <i>Bromus inermis</i> • <i>Typha sp.</i> • <i>Phalaris arundinacea</i> 	Steep sloped drain that continues west. Typha and reed canary grass dominate wet drain swale and smooth brome dominates slopes. Rock piles on slopes looking west.
63	13.2	Broken Grassland	Unmanaged - Non-Native	0-5%	75-100%	0-5%	0-5%	No	No	<ul style="list-style-type: none"> • <i>Bromus inermis</i> • <i>Medicago sativa</i> • <i>Melilotus sp.</i> 	Even-leveled area dominated by non-natives. Likely had been tilled previously. Potential historic grazing.

Homestead Wind – Grassland Field Assessment Survey Report – Williams County, North Dakota

Feature ID	Acres	Broken Grassland / Unbroken Grassland	Quality of Area	Native Species Cover	Non-Native Species Cover	Woody Species Cover	Bare Ground Cover	Grazed	Haying	Dominant Species	Notes
64	8.3	Broken Grassland	Unmanaged - Non-Native	0-5%	75-100%	0-5%	0-5%	No	No	<ul style="list-style-type: none"> • <i>Bromus inermis</i> • <i>Melilotus sp.</i> 	Dominated by smooth brome and melilotus. No active grazing, but potentially historic grazing. No haying.
65	8.2	Broken Grassland	Unmanaged - Non-Native	0-5%	75-100%	5-25%	0-5%	No	No	<ul style="list-style-type: none"> • <i>Bromus inermis</i> • <i>Medicago sativa</i> • <i>Agropyron cristatum</i> 	Evidence of historic grazing. Species cover implies previous disturbance or tilling. Partially fenced in area.
66	4.9	Broken Grassland	Artificial - Non-Native	0-5%	75-100%	0-5%	0-5%	No	Yes	<ul style="list-style-type: none"> • <i>Bromus inermis</i> • <i>Medicago sativa</i> 	Hay field planted to smooth brome and alfalfa.
67	41.3	Broken Grassland	Artificial - Non-Native	0-5%	75-100%	0-5%	0-5%	No	Yes	<ul style="list-style-type: none"> • <i>Bromus inermis</i> • <i>Medicago sativa</i> 	Hay field planted to smooth brome and alfalfa.
68	33.4	Unbroken Grassland	Non-native Grassland	5-25%	75-100%	0-5%	0-5%	No	No	<ul style="list-style-type: none"> • <i>Bromus inermis</i> • <i>Phalaris arundinacea</i> • <i>Typha sp.</i> 	Grassland associated with stream corridor. Dominated by non native graminoids with patches of native forbs and shrubs.
69	55.3	Unbroken Grassland	Non-native Grassland	5-25%	75-100%	0-5%	0-5%	No	No	<ul style="list-style-type: none"> • <i>Bromus inermis</i> • <i>Phalaris arundinacea</i> • <i>Typha sp.</i> 	Grassland associated with stream corridor. Dominated by non native graminoids with patches of native forbs and shrubs.
70	5.1	Unbroken Grassland	Non-native Grassland	5-25%	75-100%	5-25%	0-5%	No	No	<ul style="list-style-type: none"> • <i>Poa pratensis</i> • <i>Bromus inermis</i> • <i>Phalaris arundinacea</i> 	Level area around drainage-way through agg. fields. Likely tilled previously but not obvious.

Homestead Wind – Grassland Field Assessment Survey Report – Williams County, North Dakota

Feature ID	Acres	Broken Grassland / Unbroken Grassland	Quality of Area	Native Species Cover	Non-Native Species Cover	Woody Species Cover	Bare Ground Cover	Grazed	Haying	Dominant Species	Notes
71	1.2	Broken Grassland	Unmanaged - Non-Native	0-5%	75-100%	0-5%	0-5%	No	No	<ul style="list-style-type: none"> • <i>Bromus inermis</i> • <i>Poa pratensis</i> 	Small roadside marsh with a smooth brome-dominated perimeter and scattered cottonwoods.
72	1.2	Unbroken Grassland	Non-native Grassland	0-5%	75-100%	0-5%	0-5%	No	No	<ul style="list-style-type: none"> • <i>Bromus inermis</i> • <i>Alopecurus arundinaceus</i> • <i>Phalaris arundinacea</i> 	Grassy area around marsh. Dominated by non-native grasses
73	1.1	Unbroken Grassland	Non-native Grassland	25-50%	50-75%	0-5%	0-5%	No	No	<ul style="list-style-type: none"> • <i>Calamagrostis canadensis</i> • <i>Bromus inermis</i> • <i>Poa pratensis</i> 	Small graminoid-dominated area surrounding the marsh. Canada bluejoint, smooth brome, and Kentucky bluegrass dominate.
74	21.3	Unbroken Grassland	Non-native Grassland	0-5%	75-100%	0-5%	0-5%	Yes	No	<ul style="list-style-type: none"> • <i>Bromus inermis</i> 	Site is pasture, dominated by smooth brome. Evidence of grazing. Site with rolling topography.
75	189.8	Unbroken Grassland	Highly Degraded	25-50%	50-75%	5-25%	0-5%	Yes	No	<ul style="list-style-type: none"> • <i>Poa pratensis</i> • <i>Bromus inermis</i> • <i>Symphoricarpos occidentalis</i> 	Site is a large rangeland with hills adjacent to a drainage way. Degraded remnant prairie on hillsides. Smooth brome dominant in lowlands.
76	2.7	Broken Grassland	Unmanaged - Non-Native	0-5%	75-100%	25-50%	0-5%	No	No	<ul style="list-style-type: none"> • <i>Bromus inermis</i> • <i>Phalaris arundinacea</i> 	Area a mix of nonnative grasses and woody species (west of silos seen on aerial). Small area of open water surrounded by old farm machinery and equipment. Likely disturbed.
77	3.4	Broken Grassland	Artificial - Non-Native	0-5%	75-100%	0-5%	0-5%	No	Yes	<ul style="list-style-type: none"> • <i>Bromus inermis</i> • <i>Poa pratensis</i> 	Hayed portion dominated by non-natives.

Homestead Wind – Grassland Field Assessment Survey Report – Williams County, North Dakota

Feature ID	Acres	Broken Grassland / Unbroken Grassland	Quality of Area	Native Species Cover	Non-Native Species Cover	Woody Species Cover	Bare Ground Cover	Grazed	Haying	Dominant Species	Notes
78	0.1	Broken Grassland	Unmanaged - Non-Native	0-5%	75-100%	0-5%	0-5%	No	No	<ul style="list-style-type: none"> • <i>Phalaris arundinacea</i> • <i>Bromus inermis</i> 	Wet depression previously excavated. Pockets of pooled water.
79	5.8	Broken Grassland	Unmanaged - Non-Native	0-5%	75-100%	0-5%	0-5%	No	No	<ul style="list-style-type: none"> • <i>Bromus inermis</i> • <i>Phalaris arundinacea</i> 	Artificial wet area dominated by non-natives.
80	0.4	Broken Grassland	Unmanaged - Non-Native	0-5%	75-100%	0-5%	0-5%	No	No	<ul style="list-style-type: none"> • <i>Phalaris arundinacea</i> • <i>Urtica dioica</i> • <i>Persicaria amphibia</i> 	Previously tilled area now open water that had likely been excavated. Open water surrounded by reed canary grass. Pile of rocks.
81	1.6	Broken Grassland	Artificial - Native	0-5%	75-100%	0-5%	0-5%	No	Yes	<ul style="list-style-type: none"> • <i>Bromus inermis</i> • <i>Poa pratensis</i> 	Hayed portion of field.
82	6.0	Unbroken Grassland	Non-native Grassland	0-5%	75-100%	5-25%	0-5%	No	No	<ul style="list-style-type: none"> • <i>Bromus inermis</i> 	Untilled due topography and woody species. Rock piles present.
83	4.3	Broken Grassland	Unmanaged - Non-Native	0-5%	75-100%	0-5%	0-5%	No	No	<ul style="list-style-type: none"> • <i>Bromus inermis</i> 	Area in between row crop. Farm road goes through. Smooth brome dominated.
84	28.9	Unbroken Grassland	Non-native Grassland	0-5%	75-100%	5-25%	0-5%	No	No	<ul style="list-style-type: none"> • <i>Bromus inermis</i> • <i>Phalaris arundinacea</i> 	Drainage feature untilled. Reed canary grass and smooth brome dominate.

Homestead Wind – Grassland Field Assessment Survey Report – Williams County, North Dakota

Feature ID	Acres	Broken Grassland / Unbroken Grassland	Quality of Area	Native Species Cover	Non-Native Species Cover	Woody Species Cover	Bare Ground Cover	Grazed	Haying	Dominant Species	Notes
85	35.1	Unbroken Grassland	Non-native Grassland	5-25%	75-100%	5-25%	0-5%	No	No	<ul style="list-style-type: none"> • <i>Bromus inermis</i> • <i>Melilotus sp.</i> 	No sign of active grazing but probable history of grazing. Plot is fenced in. Small pockets of remnant prairie species. Drainage feature dominated by reed canary grass.
86	1.8	Broken Grassland	Unmanaged - Non-Native	0-5%	75-100%	0-5%	0-5%	No	No	<ul style="list-style-type: none"> • <i>Bromus inermis</i> 	Dominated by smooth brome.
87	0.2	Broken Grassland	Unmanaged - Non-Native	0-5%	75-100%	0-5%	25-50%	No	No	<ul style="list-style-type: none"> • <i>Bromus inermis</i> 	Smooth brome in between row crop fields.
88	0.6	Unbroken Grassland	Non-native Grassland	0-5%	75-100%	0-5%	0-5%	No	No	<ul style="list-style-type: none"> • <i>Bromus inermis</i> 	Vegetated swale in ag field, connects to larger untilled grassland to south. Dominated nearly exclusively by smooth brome.
89	120.3	Unbroken Grassland	Moderately Degraded	50-75%	25-50%	5-25%	0-5%	Yes	No	<ul style="list-style-type: none"> • <i>Hesperostipa comata</i> • <i>Poa pratensis</i> • <i>Schizachyrium scoparium</i> 	Large contiguous area of hilly, untilled grassland. Intact prairie is abundant on hills, though mildly degraded by invasion of Kentucky bluegrass. Smooth brome is locally abundant, particularly in swales.
90	1.1	Unbroken Grassland	Non-native Grassland	5-25%	75-100%	0-5%	0-5%	No	No	<ul style="list-style-type: none"> • <i>Bromus inermis</i> 	Vegetated swale in ag field, connects to larger untilled grassland to south. Dominated nearly exclusively by smooth brome.
91	0.3	Unbroken Grassland	Non-native Grassland	5-25%	75-100%	0-5%	0-5%	No	No	<ul style="list-style-type: none"> • <i>Bromus inermis</i> • <i>Phalaris arundinacea</i> • <i>Typha sp.</i> 	Grassland associated with stream corridor. Dominated by non native graminoids with patches of native forbs and shrubs.

Homestead Wind – Grassland Field Assessment Survey Report – Williams County, North Dakota

Feature ID	Acres	Broken Grassland / Unbroken Grassland	Quality of Area	Native Species Cover	Non-Native Species Cover	Woody Species Cover	Bare Ground Cover	Grazed	Haying	Dominant Species	Notes
92	253.7	Unbroken Grassland	Moderately Degraded	25-50%	50-75%	5-25%	0-5%	Yes	No	<ul style="list-style-type: none"> • <i>Poa pratensis</i> • <i>Bromus inermis</i> • <i>Symphoricarpos occidentalis</i> 	Rangeland consisting of rolling hills with heavy cover of grasses and wolfberry. Kentucky bluegrass and smooth brome are abundant throughout but native prairie species are frequent on some hillsides.
93	1.2	Broken Grassland	Unmanaged - Non-Native	0-5%	75-100%	0-5%	0-5%	No	No	<ul style="list-style-type: none"> • <i>Bromus inermis</i> 	Small hill with boulders and rocks
94	0.6	Broken Grassland	Unmanaged - Non-Native	0-5%	75-100%	0-5%	0-5%	No	No	<ul style="list-style-type: none"> • <i>Bromus inermis</i> • <i>Poa pratensis</i> 	Small grassy area associated with a water impoundment which appears to have been drained. Small pockets of shrubs, rocks, and garbage present.
95	0.5	Broken Grassland	Unmanaged - Non-Native	0-5%	75-100%	0-5%	0-5%	No	No	<ul style="list-style-type: none"> • <i>Bromus inermis</i> 	Basin with rock
96	2.5	Broken Grassland	Unmanaged - Non-Native	5-25%	75-100%	0-5%	5-25%	No	No	<ul style="list-style-type: none"> • <i>Agropyron cristatum</i> • <i>Poa pratensis</i> • <i>Bromus inermis</i> • <i>Symphoricarpos occidentalis</i> • <i>Phalaris arundinacea</i> 	Small grassland feature within row crops. Dominated by crested wheatgrass, Kentucky bluegrass, smooth brome, wolfberry, and reed canary grass within a wetland component.
97	1.3	Broken Grassland	Unmanaged - Non-Native	25-50%	50-75%	0-5%	0-5%	No	No	<ul style="list-style-type: none"> • <i>Persicaria amphibia</i> • <i>Rumex patientia</i> • <i>Carex sp.</i> • <i>Poa pratensis</i> • <i>Bromus inermis</i> 	Site contains a wetland depression dominated by water smartweed with area and a rock pile.
98	16.0	Unbroken Grassland	Non-native Grassland	0-5%	75-100%	0-5%	0-5%	No	No	<ul style="list-style-type: none"> • <i>Bromus inermis</i> • <i>Poa pratensis</i> • <i>Agropyron cristatum</i> 	Land use history of the site is hard to discern. There are a couple planted rows of trees with garden fabric. Site is dominated by non native grasses.

Homestead Wind – Grassland Field Assessment Survey Report – Williams County, North Dakota

Feature ID	Acres	Broken Grassland / Unbroken Grassland	Quality of Area	Native Species Cover	Non-Native Species Cover	Woody Species Cover	Bare Ground Cover	Grazed	Haying	Dominant Species	Notes
99	0.2	Broken Grassland	Unmanaged - Non-Native	0-5%	75-100%	0-5%	0-5%	No	No	• <i>Bromus inermis</i>	Corner in between row crop dominated by non-natives. Was likely previously tilled.
100	155.4	Unbroken Grassland	Moderately Degraded	25-50%	25-50%	5-25%	0-5%	Yes	No	• <i>Bouteloua gracilis</i> • <i>Elymus repens</i> • <i>Bromus inermis</i> • <i>Symphoricarpos occidentalis</i> • <i>Anemone patens</i>	Untilled grazed area. Decent graminoid cover with natives and non-natives mixed. Pockets of prairie species located on side slopes. Aerial depicts a change in land cover but there is no change.
101	58.5	Unbroken Grassland	Non-native Grassland	0-5%	75-100%	0-5%	0-5%	Yes	No	• <i>Agropyron cristatum</i> • <i>Bromus inermis</i>	Grazed untilled pasture dominated by non-natives.
102	80.7	Unbroken Grassland	Highly Degraded	25-50%	50-75%	5-25%	0-5%	Yes	No	• <i>Agropyron cristatum</i> • <i>Symphoricarpos occidentalis</i> • <i>Bouteloua gracilis</i> • <i>Bromus inermis</i>	Grazed pasture with prairie species
103	3.4	Broken Grassland	Unmanaged - Non-Native	0-5%	75-100%	0-5%	0-5%	No	No	• <i>Bromus inermis</i> • <i>Melilotus sp.</i>	Narrow drainage surrounded by row crops. Potentially tilled due to the lack of sloping and its width. Evidence of rutting in feature.
104	3.8	Broken Grassland	Unmanaged - Non-Native	0-5%	75-100%	0-5%	0-5%	No	No	• <i>Bromus inermis</i> • <i>Poa pratensis</i> • <i>Agropyron cristatum</i>	Wetland drainage-way dominated by non native grasses
105	0.2	Broken Grassland	Unmanaged - Non-Native	0-5%	75-100%	0-5%	0-5%	No	No	• <i>Bromus inermis</i>	Hill dominated by smooth brome, large rock pile present.

Homestead Wind – Grassland Field Assessment Survey Report – Williams County, North Dakota

Feature ID	Acres	Broken Grassland / Unbroken Grassland	Quality of Area	Native Species Cover	Non-Native Species Cover	Woody Species Cover	Bare Ground Cover	Grazed	Haying	Dominant Species	Notes
106	1.0	Broken Grassland	Unmanaged - Non-Native	0-5%	75-100%	0-5%	0-5%	No	No	<ul style="list-style-type: none"> • <i>Bromus inermis</i> • <i>Poa pratensis</i> 	Hills, possibly untitled dominated by smooth brome and Kentucky bluegrass
107	29.0	Unbroken Grassland	Non-native Grassland	0-5%	75-100%	0-5%	0-5%	No	No	<ul style="list-style-type: none"> • <i>Phalaris arundinacea</i> • <i>Bromus inermis</i> • <i>Typha angustifolia</i> 	Large wetland complex dominated by reed canary grass with smooth brome in dryer areas.
108	3.0	Broken Grassland	Unmanaged - Non-Native	5-25%	75-100%	25-50%	0-5%	No	No	<ul style="list-style-type: none"> • <i>Bromus inermis</i> • <i>Poa pratensis</i> • <i>Agropyron cristatum</i> • <i>Prunus virginiana</i> 	Grassy area associated with an old farmstead. Large patches of bushes present including chokecherry, Siberian pea shrub, and wolf berry.
109	0.7	Unbroken Grassland	Highly Degraded	25-50%	50-75%	25-50%	0-5%	No	No	<ul style="list-style-type: none"> • <i>Populus tremuloides</i> • <i>Bromus inermis</i> 	Small pocket of aspen with smooth brome underneath. Nesting red-tailed hawk nest present and visible photo
110	1.0	Broken Grassland	Unmanaged - Non-Native	5-25%	75-100%	5-25%	0-5%	No	No	<ul style="list-style-type: none"> • <i>Bromus inermis</i> • <i>Poa pratensis</i> • <i>Acer negundo</i> • <i>Prunus virginiana</i> 	Grassy area associated with an old farmstead. This area was the outer extent of tree row which consists of box elder and choke cherry
111	4.0	Broken Grassland	Artificial - Non-Native	0-5%	75-100%	0-5%	0-5%	No	Yes	<ul style="list-style-type: none"> • <i>Bromus inermis</i> 	New area. Low area within farm field. Dominated by smooth brome and showing clear indications of haying.
112	3.6	Broken Grassland	Unmanaged - Non-Native	0-5%	75-100%	5-25%	0-5%	No	No	<ul style="list-style-type: none"> • <i>Bromus inermis</i> • <i>Poa pratensis</i> • <i>Agropyron cristatum</i> • <i>Melilotus officinalis</i> • <i>Acer negundo</i> 	Grassy area associated with Farmstead. Building still present and area is dominated by smooth broom with lesser amount of the other species, woody species present around the margin. This is included because the grass continues underneath.

Homestead Wind – Grassland Field Assessment Survey Report – Williams County, North Dakota

Feature ID	Acres	Broken Grassland / Unbroken Grassland	Quality of Area	Native Species Cover	Non-Native Species Cover	Woody Species Cover	Bare Ground Cover	Grazed	Haying	Dominant Species	Notes
113	2.2	Broken Grassland	Unmanaged - Non-Native	0-5%	75-100%	0-5%	0-5%	No	No	<ul style="list-style-type: none"> • <i>Bromus inermis</i> • <i>Phalaris arundinacea</i> • <i>Persicaria amphibia</i> 	Small basin wetland, adjacent to roadway, and surrounded by farm fields, dominated by smooth brome, and reed canary grass. Rock piles present.
114	1.0	Broken Grassland	Unmanaged - Non-Native	0-5%	75-100%	0-5%	0-5%	No	No	<ul style="list-style-type: none"> • <i>Bromus inermis</i> • <i>Poa pratensis</i> 	Small wetland pocket within larger row crop fields.
115	2.8	Broken Grassland	Unmanaged - Non-Native	0-5%	75-100%	0-5%	0-5%	No	No	<ul style="list-style-type: none"> • <i>Bromus inermis</i> • <i>Poa pratensis</i> 	Field drainage way dominated by smooth brome. Scattered shrubs are found throughout.
116	0.6	Broken Grassland	Unmanaged - Non-Native	0-5%	75-100%	0-5%	0-5%	No	No	<ul style="list-style-type: none"> • <i>Bromus inermis</i> • <i>Poa pratensis</i> • <i>Melilotus officinalis</i> 	The accessible portion of this site consists of a smooth brome dominated field edge and a mowed roadside. The area mapped to the west is a manicured cemetery with little value as grassland.
117	49.7	Broken Grassland	Unmanaged - Non-Native	0-5%	75-100%	0-5%	0-5%	No	No	<ul style="list-style-type: none"> • <i>Bromus inermis</i> • <i>Poa pratensis</i> • <i>Agropyron cristatum</i> • <i>Symphoricarpos occidentalis</i> 	Fairly large grassland fracture which contains wetlands and anthropogenic areas, likely associated with an old homestead. The site appears to have been tilled in the past but it is difficult to say for certain.
118	12.6	Unbroken Grassland	Non-native Grassland	0-5%	75-100%	0-5%	0-5%	No	Yes	<ul style="list-style-type: none"> • <i>Bromus inermis</i> • <i>Poa pratensis</i> 	This feature consists of a sea rise of grassy drainage ways dominated by smooth brome. On the north side of the northern most feature, there is evidence of haying due to the presence of alfalfa but this is limited to a small area adjacent to the roadway.
119	10.7	Broken Grassland	Artificial - Non-Native	0-5%	75-100%	0-5%	0-5%	No	No	<ul style="list-style-type: none"> • <i>Bromus inermis</i> • <i>Typha sp.</i> • <i>Phalaris arundinacea</i> 	Likely tilled and disturbed. Appears to be an artificial drainage swale without steep slopes. Dominated by non-natives.

Homestead Wind – Grassland Field Assessment Survey Report – Williams County, North Dakota

Feature ID	Acres	Broken Grassland / Unbroken Grassland	Quality of Area	Native Species Cover	Non-Native Species Cover	Woody Species Cover	Bare Ground Cover	Grazed	Haying	Dominant Species	Notes
120	16.9	Unbroken Grassland	Non-native Grassland	0-5%	75-100%	0-5%	0-5%	No	No	<ul style="list-style-type: none"> • <i>Bromus inermis</i> • <i>Phalaris arundinacea</i> • <i>Typha sp.</i> 	Untilled drain dominated by non-natives. Same veg composition as it heads northwest.
121	14.9	Broken Grassland	Artificial - Non-Native	0-5%	75-100%	0-5%	0-5%	No	Yes	<ul style="list-style-type: none"> • <i>Bromus inermis</i> • <i>Medicago sativa</i> 	Level field adjacent to silos, farmhouse, and road. Likely tilled previously but evidence of current haying.
122	0.5	Broken Grassland	Unmanaged - Non-Native	0-5%	75-100%	0-5%	0-5%	No	No	<ul style="list-style-type: none"> • <i>Phalaris arundinacea</i> • <i>Poa pratensis</i> 	Area likely tilled, surrounded by row crop. Dominated by reed canary grass around the open water feature.
123	0.7	Broken Grassland	Unmanaged - Native	0-5%	75-100%	0-5%	5-25%	No	No	<ul style="list-style-type: none"> • <i>Persicaria amphibia</i> • <i>Phalaris arundinacea</i> 	Area is a farmed wetland. Very narrow piece in between the parcels. Dominated by non-natives. Area likely had been tilled at some point, includes rock pile.
124	0.4	Broken Grassland	Unmanaged - Non-Native	0-5%	75-100%	0-5%	0-5%	No	No	<ul style="list-style-type: none"> • <i>Bromus inermis</i> • <i>Poa pratensis</i> 	Site dominated by non native grasses. Site contains many old farm equipment.
125	2.8	Broken Grassland	Unmanaged - Non-Native	0-5%	75-100%	0-5%	0-5%	No	No	<ul style="list-style-type: none"> • <i>Bromus inermis</i> • <i>Agropyron cristatum</i> • <i>Melilotus officinalis</i> • <i>Poa pratensis</i> 	Site is an old farmstead dominated by non native grasses. Windbreak and a rock pile are present.
126	3.1	Broken Grassland	Unmanaged - Non-Native	0-5%	75-100%	0-5%	0-5%	No	No	<ul style="list-style-type: none"> • <i>Bromus inermis</i> • <i>Symphoricarpos occidentalis</i> • <i>Apocynum cannabinum</i> 	Hillside with some rutting, potential evidence of tilling. Some wet sections but upland sections dominated by smooth brome.

Homestead Wind – Grassland Field Assessment Survey Report – Williams County, North Dakota

Feature ID	Acres	Broken Grassland / Unbroken Grassland	Quality of Area	Native Species Cover	Non-Native Species Cover	Woody Species Cover	Bare Ground Cover	Grazed	Haying	Dominant Species	Notes
127	0.3	Broken Grassland	Unmanaged - Non-Native	0-5%	75-100%	0-5%	0-5%	No	No	• <i>Bromus inermis</i>	Flat area that could have been part of surrounding row crop. Likely previously tilled. Drain becomes likely untilled as it heads northwest.
128	17.4	Unbroken Grassland	Non-native Grassland	0-5%	75-100%	5-25%	0-5%	No	No	• <i>Bromus inermis</i>	Drainage system with steeper slopes. Untilled and dominated by smooth brome.
129	4.8	Broken Grassland	Unmanaged - Non-Native	0-5%	75-100%	0-5%	0-5%	No	No	• <i>Bromus inermis</i>	Area disturbed and previously excavated for drain and open water. Parts may have been tilled due to the less steep slopes of the drain.
130	0.2	Unbroken Grassland	Non-native Grassland	0-5%	75-100%	0-5%	0-5%	No	No	• <i>Bromus inermis</i> • <i>Melilotus sp.</i>	This untilled pt area is a sloped drainage. Delineated area by road and is the piled excavated material from the adjacent open water feature/drain.
131	38.2	Unbroken Grassland	Non-native Grassland	0-5%	75-100%	5-25%	0-5%	No	No	• <i>Agropyron cristatum</i> • <i>Symphoricarpos occidentalis</i>	Drainage on west side. Mostly non-native.
132	8.7	Unbroken Grassland	Non-native Grassland	0-5%	75-100%	0-5%	0-5%	No	No	• <i>Bromus inermis</i>	Drainage ditch alongside road, excavated. Untilled due to steep slope. Dominated by smooth brome. Buried utility along the feature.
133	1.2	Broken Grassland	Unmanaged - Non-Native	0-5%	75-100%	0-5%	0-5%	No	No	• <i>Bromus inermis</i>	This occurs between a road and an oil pad. Highly disturbed area with buried utilities going through. Not necessarily tilled but definitely excavated and disturbed. Dominated by smooth brome.

Homestead Wind – Grassland Field Assessment Survey Report – Williams County, North Dakota

Feature ID	Acres	Broken Grassland / Unbroken Grassland	Quality of Area	Native Species Cover	Non-Native Species Cover	Woody Species Cover	Bare Ground Cover	Grazed	Haying	Dominant Species	Notes
134	2.0	Broken Grassland	Unmanaged - Non-Native	0-5%	75-100%	0-5%	0-5%	No	No	<ul style="list-style-type: none"> • <i>Phalaris arundinacea</i> • <i>Typha sp.</i> 	Area had likely been tilled. Now a wetland with some open water, likely excavated and spoils situated around the open water. Reed canary grass is main dominant with some <i>Typha</i> as the secondary species.
135	4.7	Broken Grassland	Unmanaged - Non-Native	0-5%	75-100%	0-5%	0-5%	No	No	<ul style="list-style-type: none"> • <i>Bromus inermis</i> 	Grassland around unused well pad site. Smooth brome dominant throughout.
136	14.1	Unbroken Grassland	Non-native Grassland	0-5%	75-100%	25-50%	0-5%	No	No	<ul style="list-style-type: none"> • <i>Bromus inermis</i> • <i>Poa pratensis</i> • <i>Typha sp.</i> 	Wetland swale and drainage system. Farm equipment and remnants of old cars/machinery. Some rock piles. Pockets of remnant prairie species. Further east in the feature is an open water area.
137	0.3	Unbroken Grassland	Non-native Grassland	0-5%	75-100%	5-25%	0-5%	No	No	<ul style="list-style-type: none"> • <i>Bromus inermis</i> 	Untilled area between row crop. Continues into part to north. Dominated by smooth brome.
138	208.4	Unbroken Grassland	Highly Degraded	25-50%	50-75%	5-25%	0-5%	Yes	No	<ul style="list-style-type: none"> • <i>Bromus inermis</i> • <i>Symphoricarpos occidentalis</i> 	Actively grazed feature with some steep slopes. Prairie species include <i>Anemone patens</i> , <i>Viola nutallii</i> , <i>Antennaria</i> spp. <i>Echinacea pallida</i> which are more prevalent on the slopes. Mostly smooth brome and wolfberry in field.
139	7.7	Unbroken Grassland	Non-native Grassland	0-5%	75-100%	0-5%	0-5%	No	No	<ul style="list-style-type: none"> • <i>Bromus inermis</i> 	Continuation of grassland area to east. It changes into a steeper sloped drainage, where it is likely untilled.
140	2.9	Broken Grassland	Unmanaged - Non-Native	0-5%	75-100%	0-5%	0-5%	No	No	<ul style="list-style-type: none"> • <i>Phalaris arundinacea</i> 	Area had been previously tilled with wet areas that had been likely excavated. Dominated by reed canary grass with typha around pocket of open water and a small stand of Phragmites.

Homestead Wind – Grassland Field Assessment Survey Report – Williams County, North Dakota

Feature ID	Acres	Broken Grassland / Unbroken Grassland	Quality of Area	Native Species Cover	Non-Native Species Cover	Woody Species Cover	Bare Ground Cover	Grazed	Haying	Dominant Species	Notes
141	2.9	Broken Grassland	Unmanaged - Non-Native	0-5%	75-100%	0-5%	0-5%	No	No	<ul style="list-style-type: none"> • <i>Typha sp.</i> • <i>Pericaria amphibia</i> • <i>Bromus inermis</i> 	Continuation of grassland to the southeast. Crosses onto parcel to east. Open water in feature with typha.
142	5.3	Broken Grassland	Unmanaged - Non-Native	0-5%	75-100%	0-5%	0-5%	No	No	<ul style="list-style-type: none"> • <i>Typha sp.</i> • <i>Pericaria amphibia</i> • <i>Phragmites australis</i> • <i>Equisetum hyemale</i> 	Areas of open water, mostly wet drainage with typha. Surrounded by row crop. Feature continues onto parcel north.
143	1.9	Broken Grassland	Unmanaged - Non-Native	0-5%	75-100%	0-5%	0-5%	No	No	<ul style="list-style-type: none"> • <i>Typha sp.</i> • <i>Bromus inermis</i> • <i>Pericaria amphibia</i> 	Wet area with some open water. Open water portion likely excavated. Feature continues onto parcel south.
144	1.5	Broken Grassland	Unmanaged - Non-Native	5-25%	50-75%	0-5%	0-5%	No	No	<ul style="list-style-type: none"> • <i>Bromus inermis</i> • <i>Carex cf. atherodes</i> • <i>Pericaria amphibia</i> 	Most of feature likely tilled. Wet area with some open water and rock piles. Pockets of native graminoid cover on east side.
145	0.3	Broken Grassland	Unmanaged - Non-Native	0-5%	75-100%	0-5%	0-5%	No	No	<ul style="list-style-type: none"> • <i>Bromus inermis</i> • <i>Phalaris arundinacea</i> • <i>Alopecurus arundinaceus</i> 	New grassland area with adjacent marsh to the north. Dominated by reed canary grass and smooth brome.
146	3.7	Broken Grassland	Artificial - Non-Native	0-5%	75-100%	0-5%	0-5%	No	Yes	<ul style="list-style-type: none"> • <i>Bromus inermis</i> • <i>Symphoricarpos occidentalis</i> 	Western portion is hayed. Dominated by smooth brome
147	4.9	Unbroken Grassland	Non-native Grassland	5-25%	75-100%	0-5%	0-5%	No	Yes	<ul style="list-style-type: none"> • <i>Agropyron cristatum</i> • <i>Poa pratensis</i> • <i>Anemone patens</i> 	Hayed last year. Likely history of cattle grazing with remnant barbed wire and existing fence on east boundary.

Homestead Wind – Grassland Field Assessment Survey Report – Williams County, North Dakota

Feature ID	Acres	Broken Grassland / Unbroken Grassland	Quality of Area	Native Species Cover	Non-Native Species Cover	Woody Species Cover	Bare Ground Cover	Grazed	Haying	Dominant Species	Notes
148	150.7	Unbroken Grassland	Highly Degraded	25-50%	50-75%	0-5%	0-5%	Yes	No	<ul style="list-style-type: none"> • <i>Agropyron cristatum</i> • <i>Poa pratensis</i> 	Sloped portions of feature are of higher quality. Sections of wolfberry but overall cover less than 5%. Grazed and site is enclosed by barbed wire. Dominant is the wheatgrass but prairie species within.
149	5.8	Unbroken Grassland	Non-native Grassland	0-5%	75-100%	5-25%	0-5%	No	No	<ul style="list-style-type: none"> • <i>Bromus inermis</i> 	Drainage system, sloped, pockets of open water.
150	12.7	Unbroken Grassland	Non-native Grassland	0-5%	75-100%	0-5%	0-5%	Yes	No	<ul style="list-style-type: none"> • <i>Agropyron cristatum</i> • <i>Bromus inermis</i> • <i>Melilotus spp.</i> 	Water drainage through feature. Actively grazed.
151	5.9	Unbroken Grassland	Non-native Grassland	0-5%	75-100%	5-25%	0-5%	Yes	No	<ul style="list-style-type: none"> • <i>Bromus inermis</i> • <i>Typha sp.</i> • <i>Melilotus spp.</i> 	Well grazed. Drainage through plot as seen on aerial.
152	107.0	Unbroken Grassland	Non-native Grassland	5-25%	50-75%	0-5%	0-5%	Yes	No	<ul style="list-style-type: none"> • <i>Agropyron cristatum</i> • <i>Bromus inermis</i> • <i>Symphoricarpos occidentalis</i> 	Drainage with some pockets of open water as seen in aerial. Grazed area but pockets of prairie species.
153	77.9	Unbroken Grassland	Highly Degraded	25-50%	50-75%	5-25%	0-5%	Yes	No	<ul style="list-style-type: none"> • <i>Bromus inermis</i> • <i>Typha sp.</i> • <i>Bouteloua hirsuta</i> 	Actively grazed and surrounded by fence. Drainage feature as seen on aerial. Area become steeper as drainage heads south, area dominated by cattails. Upland contains mix of native and nonnative. Prairie species on hillsides.
154	6.6	Unbroken Grassland	Non-native Grassland	0-5%	75-100%	0-5%	0-5%	No	No	<ul style="list-style-type: none"> • <i>Bromus inermis</i> 	Sloped area dominated by smooth brome.

Homestead Wind – Grassland Field Assessment Survey Report – Williams County, North Dakota

Feature ID	Acres	Broken Grassland / Unbroken Grassland	Quality of Area	Native Species Cover	Non-Native Species Cover	Woody Species Cover	Bare Ground Cover	Grazed	Haying	Dominant Species	Notes
155	4.0	Broken Grassland	Unmanaged - Non-Native	0-5%	75-100%	0-5%	0-5%	No	No	<ul style="list-style-type: none"> • <i>Bromus inermis</i> • <i>Poa pratensis</i> 	Skinny feature along the road. Most likely had been previously tilled.
156	2.3	Unbroken Grassland	Moderately Degraded	25-50%	50-75%	5-25%	0-5%	No	No	<ul style="list-style-type: none"> • <i>Bromus inermis</i> • <i>Phalaris arundinacea</i> • <i>Persicaria amphibia</i> 	Degraded wetland basin with boxelder trees and smooth brome surrounding it.
157	2.3	Unbroken Grassland	Non-native Grassland	5-25%	75-100%	5-25%	0-5%	No	No	<ul style="list-style-type: none"> • <i>Bromus inermis</i> • <i>Symphoricarpos occidentalis</i> 	Disturbed, and possibly tilled, drainage way dominated by smooth brome.
158	0.4	Broken Grassland	Unmanaged - Non-Native	0-5%	75-100%	0-5%	0-5%	No	No	<ul style="list-style-type: none"> • <i>Spartina pectinata</i> • <i>Rumex crispus</i> • <i>Bromus inermis</i> 	Surrounded by row crop. Previously tilled. Wet area now.
159	62.6	Unbroken Grassland	Highly Degraded	25-50%	50-75%	0-5%	0-5%	Yes	No	<ul style="list-style-type: none"> • <i>Agropyron cristatum</i> • <i>Poa pratensis</i> • See notes 	Some evidence of rutting, potentially, was hayed historically. Dominant prairie species include <i>Carex duriscula</i> , <i>Anemone patens</i> , and <i>Artemisia ludoviciana</i> .
160	0.5	Unbroken Grassland	Non-native Grassland	0-5%	75-100%	0-5%	0-5%	No	No	<ul style="list-style-type: none"> • <i>Agropyron cristatum</i> • <i>Bromus inermis</i> • <i>Melilotus spp.</i> 	Rock piles and uneven ground.
161	1.0	Broken Grassland	Artificial - Non-Native	0-5%	75-100%	0-5%	0-5%	No	Yes	<ul style="list-style-type: none"> • <i>Bromus inermis</i> • <i>Urtica dioica</i> • <i>Symphoricarpos occidentalis</i> 	Portions tilled and hayed. Partially artificial.

Homestead Wind – Grassland Field Assessment Survey Report – Williams County, North Dakota

Feature ID	Acres	Broken Grassland / Unbroken Grassland	Quality of Area	Native Species Cover	Non-Native Species Cover	Woody Species Cover	Bare Ground Cover	Grazed	Haying	Dominant Species	Notes
162	84.3	Unbroken Grassland	Highly Degraded	5-25%	50-75%	0-5%	0-5%	Yes	No	<ul style="list-style-type: none"> • <i>Bromus inermis</i> • <i>Agropyron cristatum</i> • <i>Poa pratensis</i> 	Patches of wolfberry. Areas of prairie species but other area degraded- variable quality.
163	3.6	Broken Grassland	Unmanaged - Non-Native	0-5%	75-100%	0-5%	0-5%	No	Yes	<ul style="list-style-type: none"> • <i>Phalaris arundinacea</i> • <i>Bromus inermis</i> • <i>Cirsium arvense</i> 	History of grazing, some older cow droppings present. Feature surrounded by row crop. At some point, it had been tilled. Small areas of standing water due to it being a low point in between row crop.
164	5.5	Broken Grassland	Unmanaged - Non-Native	0-5%	75-100%	0-5%	0-5%	No	No	<ul style="list-style-type: none"> • <i>Agropyron cristatum</i> • <i>Bromus inermis</i> • <i>Typha sp.</i> 	Wet area with pockets of pooled water. Likely tilled in the past but often too wet to farm.
165	20.3	Unbroken Grassland	Highly Degraded	0-5%	75-100%	5-25%	0-5%	Yes	No	<ul style="list-style-type: none"> • <i>Bromus inermis</i> • <i>Agropyron cristatum</i> • <i>Spartina pectinata</i> 	Area surrounded by row crop and some trace barbed wire. Evidence of grazing but unclear how recent. Pockets of prairie species. Dark areas on aerial associated with drainage, <i>Spartina</i> restricted to the drainage area.
166	3.3	Broken Grassland	Unmanaged - Non-Native	0-5%	75-100%	0-5%	0-5%	No	No	<ul style="list-style-type: none"> • <i>Typha sp.</i> • <i>Bromus inermis</i> • <i>Unknown composite</i> 	Side hill seep with cattails. Surrounded by row crop. Evidence of rutting, could have been historically grazed.
167	0.9	Unbroken Grassland	Highly Degraded	5-25%	75-100%	0-5%	0-5%	No	No	<ul style="list-style-type: none"> • <i>Bromus inermis</i> • <i>Agropyron cristatum</i> 	Grassland associated with linear wetland corridor. Dominated largely by smooth brome.
168	7.8	Broken Grassland	Unmanaged - Non-Native	0-5%	75-100%	0-5%	0-5%	No	No	<ul style="list-style-type: none"> • <i>Bromus inermis</i> • <i>Poa pratensis</i> 	Area most likely had been tilled. Excavated basins as seen on aerials and the spoils most likely situated on the feature.

Homestead Wind – Grassland Field Assessment Survey Report – Williams County, North Dakota

Feature ID	Acres	Broken Grassland / Unbroken Grassland	Quality of Area	Native Species Cover	Non-Native Species Cover	Woody Species Cover	Bare Ground Cover	Grazed	Haying	Dominant Species	Notes
169	16.4	Unbroken Grassland	Non-native Grassland	5-25%	75-100%	0-5%	0-5%	No	No	• <i>Bromus inermis</i>	Grassland on hills following drainage in ag field. Overwhelmingly dominated by smooth brome, with localized colonies of wolfberry.
170	0.2	Unbroken Grassland	Non-native Grassland	0-5%	75-100%	0-5%	0-5%	No	No	• <i>Bromus inermis</i> • <i>Poa pratensis</i> • <i>Symphoricarpos occidentalis</i>	Large drainage-way with adjacent hills which have prevented tilling. Smooth brome dominated with pockets of shrubs.
171	1.1	Broken Grassland	Unmanaged - Non-Native	0-5%	75-100%	0-5%	0-5%	No	No	• <i>Bromus inermis</i> • <i>Poa pratensis</i> • <i>Agropyron cristatum</i>	Site contains two old silos and a large rock pile. Site is a hill dominated by non native grasses.
172	3.0	Broken Grassland	Unmanaged - Native	75-100%	5-25%	0-5%	0-5%	No	No	• <i>Persicaria amphibia</i> • <i>Bromus inermis</i> • <i>Rumex patientia</i>	Site dominated by water smartweed with a ring of mostly smooth brome around the edge. Patches of wolf berry throughout.
173	2.4	Broken Grassland	Unmanaged - Non-Native	0-5%	75-100%	0-5%	0-5%	No	No	• <i>Phalaris arundinacea</i> • <i>Bromus inermis</i> • <i>Urtica dioica</i> • <i>Cirsium arvense</i>	Site includes a small drainageway through the middle. Site is dominated by reed canary grass and smooth brome.
174	0.2	Broken Grassland	Unmanaged - Non-Native	0-5%	75-100%	0-5%	0-5%	No	No	• <i>Bromus inermis</i> • <i>Melilotus officinalis</i> • <i>Poa pratensis</i>	Road embankment scrapped to provide soil for road. Dominated by smooth brome.