

STATE OF NORTH DAKOTA
PUBLIC SERVICE COMMISSION

Basin Electric Power Cooperative
Pioneer Generation Station Ph IV - Williams County
Siting Application

Case No. PU-22-380

NOTICE OF FILING AND NOTICE OF PUBLIC HEARING

November 30, 2022

A Public Hearing on the application in Case No. PU-22-380 is scheduled to begin January 5, 2023, at 9:00 AM CT, at the Williston City Hall in the John Kautzman Chamber Room, 22 East Broadway, Williston, ND 58802.

On October 7, 2022, Basin Electric Power Cooperative filed an application for a certificate of site compatibility concerning the location of two 235.7 megawatt simple cycle combustion turbines, six 18.8 megawatt reciprocating internal combustion engines, and associated facilities as an addition to the Pioneer Generation Station in Williams County, North Dakota, as shown on the attached map.

The issues in the application for a certificate of site compatibility are:

1. Will construction, operation, and maintenance of the facility at the proposed location produce minimal adverse effects on the environment and upon the welfare of the citizens of North Dakota?
2. Is the proposed facility compatible with the environmental preservation and the efficient use of resources?
3. Will construction, operation, and maintenance of the facility at the proposed location minimize adverse human and environmental impact while ensuring continuing system reliability and integrity and ensuring that energy needs are met and fulfilled in an orderly and timely fashion?

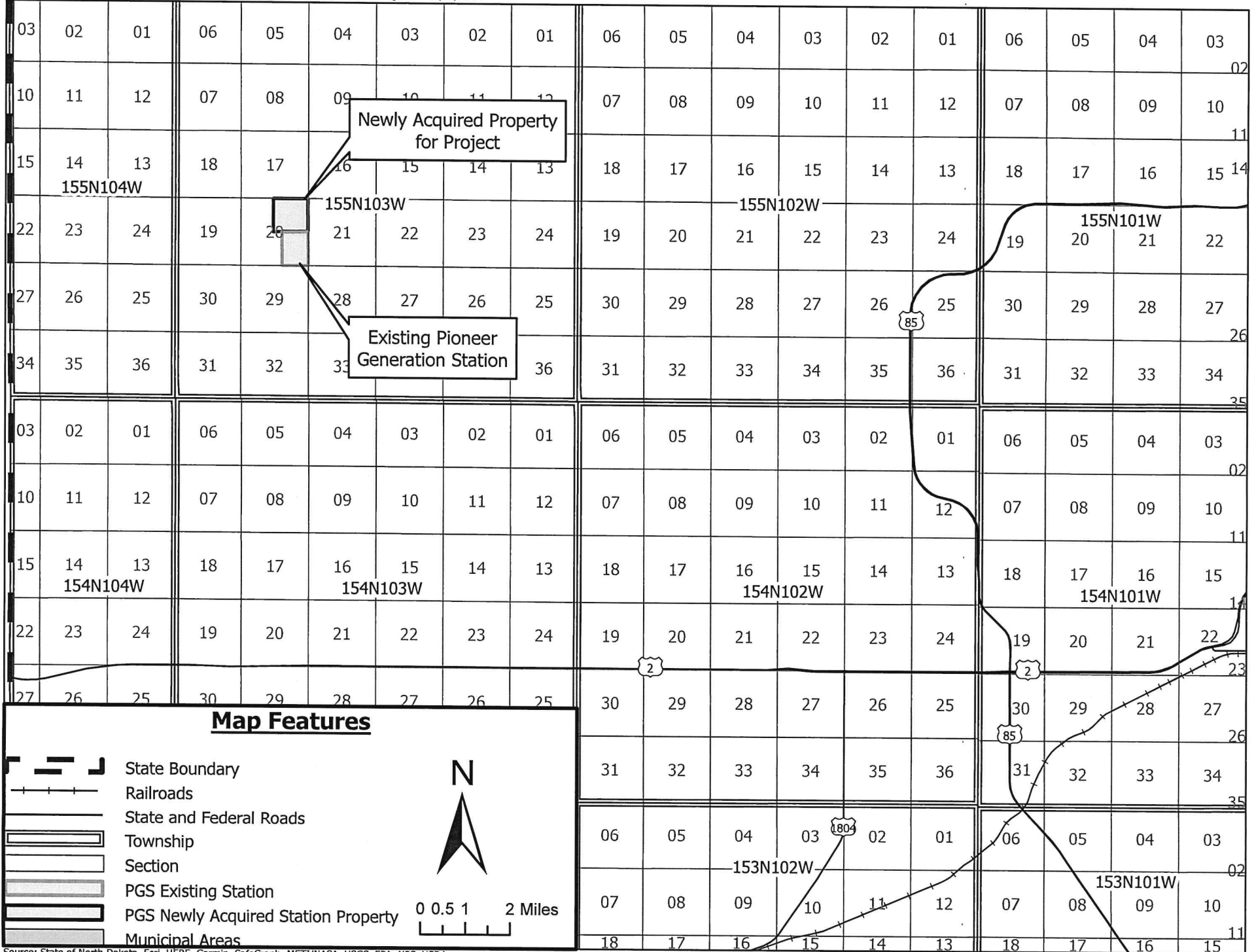
For more information contact the Public Service Commission, State Capitol, Bismarck, North Dakota 58505, 701-328-2400; or Relay North Dakota, 1-800-366-6888 TTY. If you require any auxiliary aids or services, such as readers, signers, or Braille materials, please notify the Commission at least 24 hours in advance.

PUBLIC SERVICE COMMISSION


Randy Christmann
Commissioner


Julie Fedorchak
Chair


Sheri Haugen-Hoffart
Commissioner



Map Features

- State Boundary
- Railroads
- State and Federal Roads
- Township
- Section
- PGS Existing Station
- PGS Newly Acquired Station Property
- Municipal Areas

N

0 0.5 1 2 Miles